



TRILOBITE TESTING, INC

DRILL STEM TEST REPORT

Dixon Operating Corporation LLC

4/23S/12W/Stafford

8100 E 22nd St North
 Building 300 Suite 200
 Wichita, Kansas 67226
 ATTN: Chuck Schmaltz

Alpers #1-4

Job Ticket: 61945

DST#: 1

Test Start: 2016.10.29 @ 18:55:00

GENERAL INFORMATION:

Formation: **Lansing/Kansas City**

Deviated: No Whipstock: ft (KB)

Time Tool Opened: 20:34:30

Time Test Ended: 02:00:30

Test Type: Conventional Bottom Hole (Initial)

Tester: Ken Swinney

Unit No: 72 Great Bend/50

Interval: 3331.00 ft (KB) To 3408.00 ft (KB) (TVD)

Reference Elevations: 1853.00 ft (KB)

Total Depth: 3408.00 ft (KB) (TVD)

1842.00 ft (CF)

Hole Diameter: 7.80 inches Hole Condition: Fair

KB to GR/CF: 11.00 ft

Serial #: 6999 Inside

Press@RunDepth: 135.28 psig @ 3403.44 ft (KB)

Capacity: 8000.00 psig

Start Date: 2016.10.29 End Date: 2016.10.30

Last Calib.: 2016.10.30

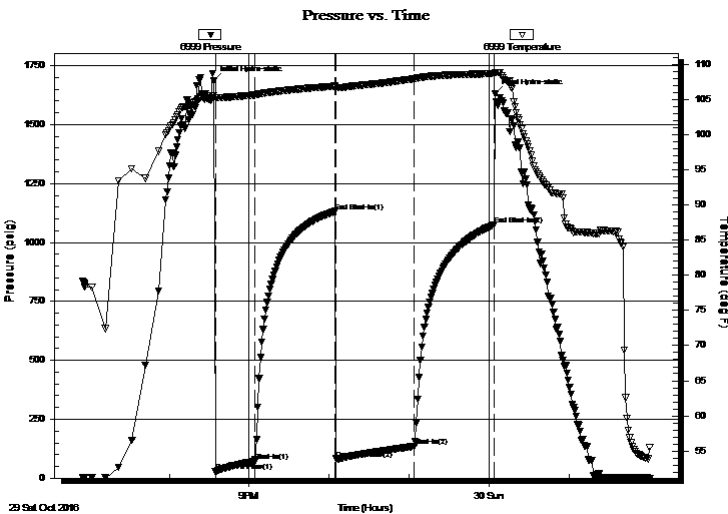
Start Time: 18:55:05 End Time: 02:00:29

Time On Btm: 2016.10.29 @ 20:33:30

Time Off Btm: 2016.10.30 @ 00:04:30

TEST COMMENT: I.F. 30 minutes/Blow built to 3 1/4 inches
 I.S.I. 60 minutes/No blow back
 F.F. 60 minutes/Surface blow died in 2 minutes
 F.S.I. 60 minutes/No blow back

PRESSURE SUMMARY



Time (Min.)	Pressure (psig)	Temp (deg F)	Annotation
0	1685.20	105.54	Initial Hydro-static
1	27.14	105.28	Open To Flow (1)
31	69.66	105.66	Shut-In(1)
91	1131.85	106.92	End Shut-In(1)
92	81.87	106.74	Open To Flow (2)
151	135.28	107.96	Shut-In(2)
210	1074.42	108.70	End Shut-In(2)
211	1630.24	108.85	Final Hydro-static

Recovery

Length (ft)	Description	Volume (bbl)
240.00	Oil spotted muddy water	1.18
0.00	Mud 35% Water 65%	0.00

Gas Rates

	Choke (inches)	Pressure (psig)	Gas Rate (Mcf/d)



TRILOBITE TESTING, INC

DRILL STEM TEST REPORT

Dixon Operating Corporation LLC

4/23S/12W/Stafford

8100 E 22nd St North
 Building 300 Suite 200
 Wichita, Kansas 67226
 ATTN: Chuck Schmaltz

Alpers #1-4

Job Ticket: 61945

DST#: 1

Test Start: 2016.10.29 @ 18:55:00

GENERAL INFORMATION:

Formation: **Lansing/Kansas City**

Deviated: No Whipstock: ft (KB)

Time Tool Opened: 20:34:30

Time Test Ended: 02:00:30

Test Type: Conventional Bottom Hole (Initial)

Tester: Ken Swinney

Unit No: 72 Great Bend/50

Interval: 3331.00 ft (KB) To 3408.00 ft (KB) (TVD)

Reference Elevations: 1853.00 ft (KB)

Total Depth: 3408.00 ft (KB) (TVD)

1842.00 ft (CF)

Hole Diameter: 7.80 inches Hole Condition: Fair

KB to GR/CF: 11.00 ft

Serial #: 8960 Outside

Press@RunDepth: 1073.77 psig @ 3404.44 ft (KB)

Capacity: 8000.00 psig

Start Date: 2016.10.29

End Date:

2016.10.30

Last Calib.: 2016.10.30

Start Time: 18:55:05

End Time:

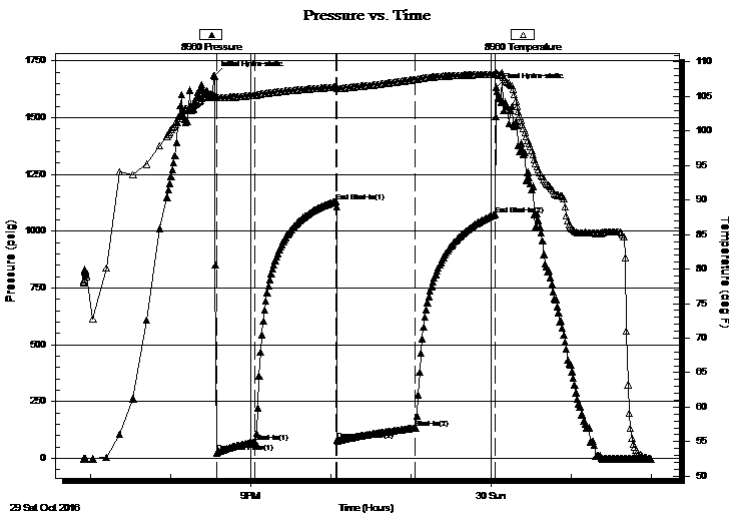
01:59:59

Time On Btm: 2016.10.29 @ 20:33:00

Time Off Btm: 2016.10.30 @ 00:04:00

TEST COMMENT: I.F. 30 minutes/Blow built to 3 1/4 inches
 I.S.I. 60 minutes/No blow back
 F.F. 60 minutes/Surface blow died in 2 minutes
 F.S.I. 60 minutes/No blow back

PRESSURE SUMMARY



Time (Min.)	Pressure (psig)	Temp (deg F)	Annotation
0	1683.42	105.07	Initial Hydro-static
2	24.99	104.83	Open To Flow (1)
31	69.59	105.17	Shut-In(1)
91	1131.10	106.38	End Shut-In(1)
92	78.85	106.14	Open To Flow (2)
151	133.76	107.45	Shut-In(2)
210	1073.77	108.21	End Shut-In(2)
211	1634.19	108.36	Final Hydro-static

Recovery

Length (ft)	Description	Volume (bbl)
240.00	Oil spotted muddy w water	1.18
0.00	Mud 35% Water 65%	0.00

Gas Rates

	Choke (inches)	Pressure (psig)	Gas Rate (Mcf/d)



**TRILOBITE
TESTING, INC**

DRILL STEM TEST REPORT

FLUID SUMMARY

Dixon Operating Corporation LLC

4/23S/12W/Stafford

8100 E 22nd St North
Building 300 Suite 200
Wichita, Kansas 67226
ATTN: Chuck Schmaltz

Alpers #1-4

Job Ticket: 61945

DST#: 1

Test Start: 2016.10.29 @ 18:55:00

Mud and Cushion Information

Mud Type: Gel Chem

Mud Weight: 10.00 lb/gal

Viscosity: 58.00 sec/qt

Water Loss: 7.98 in³

Resistivity: ohm.m

Salinity: 6800.00 ppm

Filter Cake: inches

Cushion Type:

Cushion Length: ft

Cushion Volume: bbl

Gas Cushion Type:

Gas Cushion Pressure: psig

Oil API:

Water Salinity: 14000 ppm

deg API

Recovery Information

Recovery Table

Length ft	Description	Volume bbl
240.00	Oil spotted muddy w ater	1.180
0.00	Mud 35% Water 65%	0.000

Total Length: 240.00 ft Total Volume: 1.180 bbl

Num Fluid Samples: 0

Num Gas Bombs: 0

Serial #:

Laboratory Name:

Laboratory Location:

Recovery Comments: Recovery Resistivity .48 ohms @ 65 degrees

Pressure vs. Time

