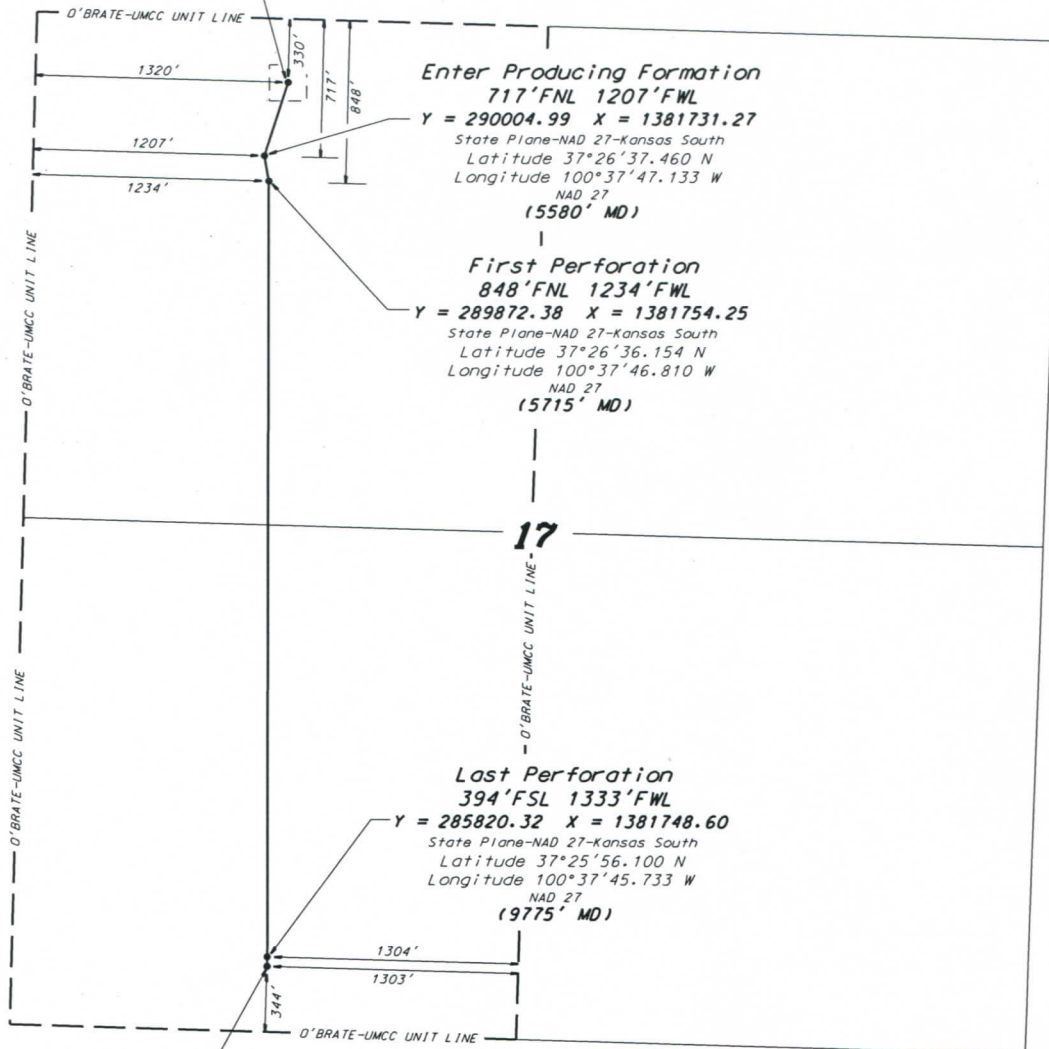


MCCOY PETROLEUM CORPORATION  
 O'BRATE-UMCC LEASE  
 W. 1/2, SECTION 17, T30S, R30W  
 MEADE COUNTY, KANSAS  
 (AS-DRILLED PLAT)

Surface Location  
 O'Brate-UMCC #1H-17  
 330'FNL 1320'FWL  
 Ground Elevation = 2815  
 Y = 290390.00 X = 1381854.00  
 State Plane-NAD 27-Kansas South  
 Latitude 37°26'41.293 N  
 Longitude 100°37'45.720 W  
 NAD 27



Enter Producing Formation  
 717'FNL 1207'FWL  
 Y = 290004.99 X = 1381731.27  
 State Plane-NAD 27-Kansas South  
 Latitude 37°26'37.460 N  
 Longitude 100°37'47.133 W  
 NAD 27  
 (5580' MD)

First Perforation  
 848'FNL 1234'FWL  
 Y = 289872.38 X = 1381754.25  
 State Plane-NAD 27-Kansas South  
 Latitude 37°26'36.154 N  
 Longitude 100°37'46.810 W  
 NAD 27  
 (5715' MD)

Last Perforation  
 394'FSL 1333'FWL  
 Y = 285820.32 X = 1381748.60  
 State Plane-NAD 27-Kansas South  
 Latitude 37°25'56.100 N  
 Longitude 100°37'45.733 W  
 NAD 27  
 (9775' MD)

Projection to Bit (TD)  
 344'FSL 1333'FWL  
 Y = 285770.33 X = 1381747.73  
 State Plane-NAD 27-Kansas South  
 Latitude 37°25'55.606 N  
 Longitude 100°37'45.730 W  
 NAD 27  
 (9825' MD)



\* Controlling data is based upon the best maps and photographs available to us and upon a regular section of land containing 640 acres.  
 \* Approximate section lines were determined using the normal standard of care of oilfield surveyors practicing in the state of Kansas. The section corners, which establish the precise section lines, were not necessarily located, and the exact location of the drillsite location in the section is not guaranteed. Therefore, the operator securing this service and accepting this plat and all other parties relying thereon agree to hold Central Kansas Oilfield Services, Inc., its officers and employees harmless from all losses, costs and expenses and said entities released from any liability from incidental or consequential damages.  
 \* Elevations derived from National Geodetic Vertical Datum.

Date December 5, 2018