



**TRILOBITE
TESTING, INC**

DRILL STEM TEST REPORT

Culbreath Oil & Gas Co, Inc

5 10s 26w Sheridan, Ks

301 S Yale Ave.
Tulsa, Ok 74135

Riedel #1-5

Job Ticket: 63453

DST#: 3

ATTN: Richard Bell

Test Start: 2016.10.25 @ 02:38:00

GENERAL INFORMATION:

Formation: **LKC - D**

Deviated: No Whipstock: ft (KB)

Time Tool Opened: 04:50:00

Time Test Ended: 11:21:15

Test Type: Conventional Bottom Hole (Reset)

Tester: Bradley Walter

Unit No: 78

Interval: 3894.00 ft (KB) To 3915.00 ft (KB) (TVD)

Reference Elevations: 2653.00 ft (KB)

Total Depth: 3915.00 ft (KB) (TVD)

2643.00 ft (CF)

Hole Diameter: 7.88 inches Hole Condition: Good

KB to GR/CF: 10.00 ft

Serial #: 8365

Inside

Press@RunDepth: 293.05 psig @ 3895.00 ft (KB)

Capacity: 8000.00 psig

Start Date: 2016.10.25

End Date:

2016.10.25

Last Calib.:

2016.10.25

Start Time: 02:48:05

End Time:

11:31:15

Time On Btm:

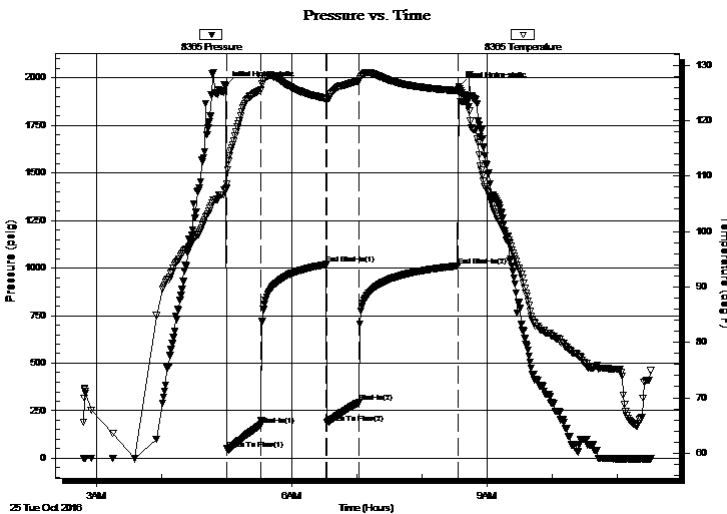
2016.10.25 @ 04:59:00

Time Off Btm:

2016.10.25 @ 08:34:00

TEST COMMENT: IF: BOB @ 1 min.
IS: BOB @ 12 min.
FF: BOB @ open
FS: BOB @ 12 min.

PRESSURE SUMMARY



Time (Min.)	Pressure (psig)	Temp (deg F)	Annotation
0	1957.70	107.68	Initial Hydro-static
1	48.75	108.54	Open To Flow (1)
33	176.11	125.52	Shut-In(1)
93	1018.99	124.03	End Shut-In(1)
94	185.95	123.73	Open To Flow (2)
123	293.05	127.16	Shut-In(2)
214	1011.48	125.39	End Shut-In(2)
215	1954.52	125.68	Final Hydro-static

Recovery

Length (ft)	Description	Volume (bbl)
90.00	gmco 30g 25m 45o	1.26
680.00	go 40g 60o	9.54
0.00	3020 GIP	0.00

* Recovery from multiple tests

Gas Rates

	Choke (inches)	Pressure (psig)	Gas Rate (Mcf/d)



**TRILOBITE
TESTING, INC**

DRILL STEM TEST REPORT

Culbreath Oil & Gas Co, Inc

5 10s 26w Sheridan, Ks

301 S Yale Ave.
Tulsa, Ok 74135

Riedel #1-5

Job Ticket: 63453

DST#: 3

ATTN: Richard Bell

Test Start: 2016.10.25 @ 02:38:00

GENERAL INFORMATION:

Formation: **LKC - D**

Deviated: No Whipstock: ft (KB)

Time Tool Opened: 04:50:00

Time Test Ended: 11:21:15

Test Type: Conventional Bottom Hole (Reset)

Tester: Bradley Walter

Unit No: 78

Interval: 3894.00 ft (KB) To 3915.00 ft (KB) (TVD)

Reference Elevations: 2653.00 ft (KB)

Total Depth: 3915.00 ft (KB) (TVD)

2643.00 ft (CF)

Hole Diameter: 7.88 inches Hole Condition: Good

KB to GR/CF: 10.00 ft

Serial #: 8845 **Outside**

Press@RunDepth: psig @ 3895.00 ft (KB)

Capacity: 8000.00 psig

Start Date: 2016.10.25

End Date:

2016.10.25

Last Calib.:

2016.10.25

Start Time: 02:48:05

End Time:

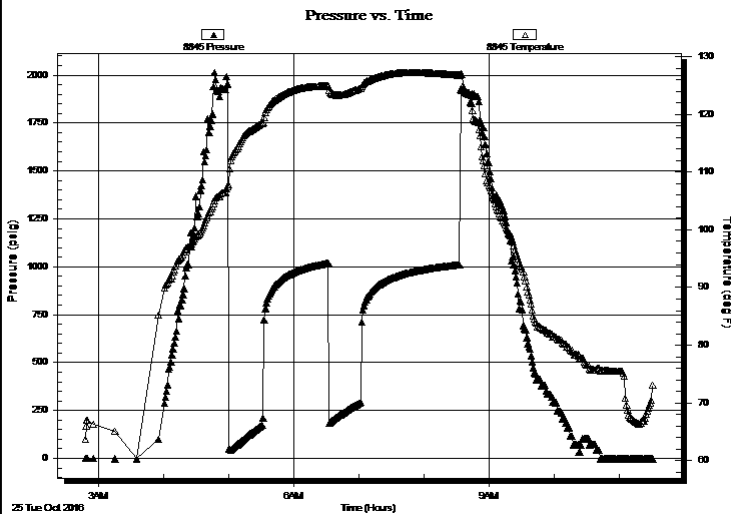
11:31:15

Time On Btm:

Time Off Btm:

TEST COMMENT: IF: BOB @ 1 min.
IS: BOB @ 12 min.
FF: BOB @ open
FS: BOB @ 12 min.

PRESSURE SUMMARY



Time (Min.)	Pressure (psig)	Temp (deg F)	Annotation

Recovery

Length (ft)	Description	Volume (bbl)
90.00	gmco 30g 25m 45o	1.26
680.00	go 40g 60o	9.54
0.00	3020 GIP	0.00

Gas Rates

Choke (inches)	Pressure (psig)	Gas Rate (Mcf/d)

* Recovery from multiple tests



**TRILOBITE
TESTING, INC**

DRILL STEM TEST REPORT

FLUID SUMMARY

Culbreath Oil & Gas Co, Inc

5 10s 26w Sheridan, Ks

301 S Yale Ave.
Tulsa, Ok 74135

Riedel #1-5

Job Ticket: 63453

DST#: 3

ATTN: Richard Bell

Test Start: 2016.10.25 @ 02:38:00

Mud and Cushion Information

Mud Type: Gel Chem

Cushion Type:

Oil API:

35 deg API

Mud Weight: 9.00 lb/gal

Cushion Length:

ft

Water Salinity:

0 ppm

Viscosity: 45.00 sec/qt

Cushion Volume:

bbbl

Water Loss: 8.79 in³

Gas Cushion Type:

Resistivity: ohm.m

Gas Cushion Pressure:

psig

Salinity: 1000.00 ppm

Filter Cake: 1.00 inches

Recovery Information

Recovery Table

Length ft	Description	Volume bbl
90.00	gmco 30g 25m 45o	1.262
680.00	go 40g 60o	9.539
0.00	3020 GIP	0.000

Total Length: 770.00 ft Total Volume: 10.801 bbl

Num Fluid Samples: 0

Num Gas Bombs: 0

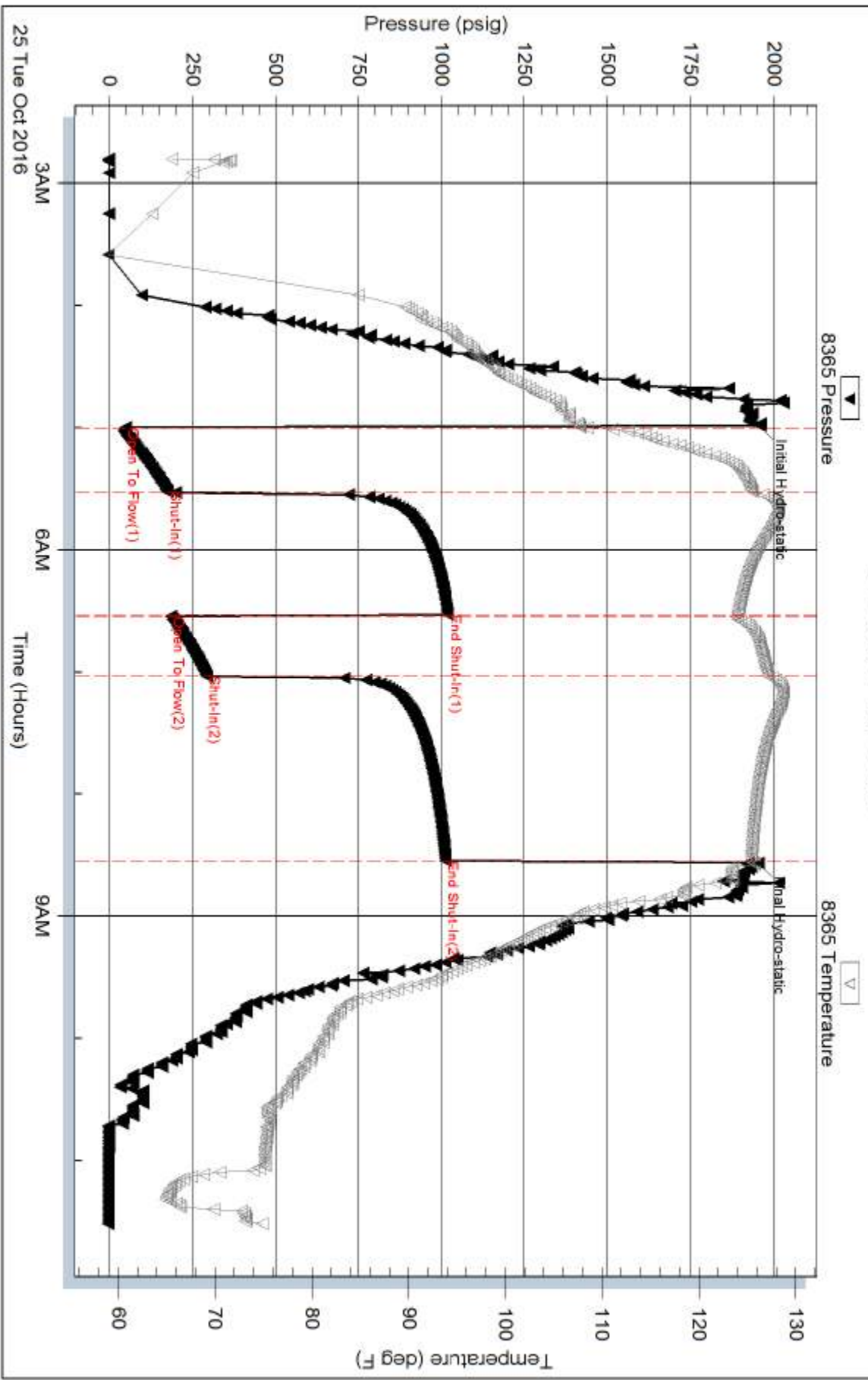
Serial #:

Laboratory Name:

Laboratory Location:

Recovery Comments:

Pressure vs. Time

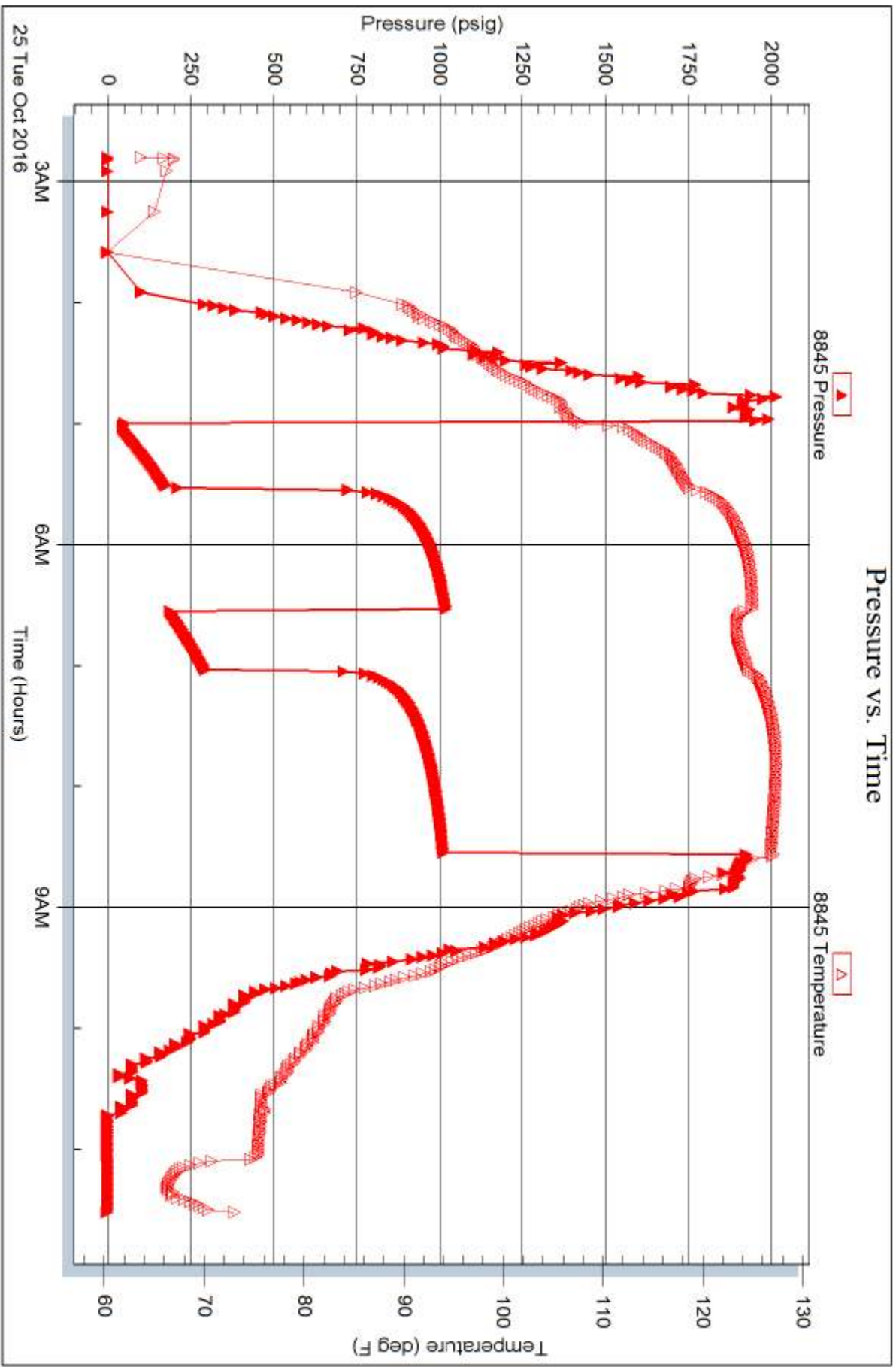


Serial #: 8845

Outside Culbreath Oil & Gas Co, Inc

Riedel #1-5

DST Test Number: 3



Triobite Testing, Inc

Ref. No: 63453

Printed: 2016.10.25 @ 12:03:26