

KANSAS CORPORATION COMMISSION
OIL & GAS CONSERVATION DIVISION

TEMPORARY ABANDONMENT WELL APPLICATION

OPERATOR: License#
Name:
Address 1:
Address 2:
City: State: Zip:
Contact Person:
Phone:
Contact Person Email:
Field Contact Person:
Field Contact Person Phone:

API No. 15-
Spot Description:
Sec. Twp. S. R.
GPS Location: Lat: Long:
Datum: NAD27 NAD83 WGS84
County: Elevation:
Lease Name: Well #:
Well Type: Oil Gas OG WSW Other:
SWD Permit #: ENHR Permit #:
Gas Storage Permit #:
Spud Date: Date Shut-In:

Table with 7 columns: Conductor, Surface, Production, Intermediate, Liner, Tubing. Rows include Size, Setting Depth, Amount of Cement, Top of Cement, Bottom of Cement.

Casing Fluid Level from Surface: How Determined? Date:
Casing Squeeze(s): to w / sacks of cement, to w / sacks of cement. Date:
Do you have a valid Oil & Gas Lease? Yes No
Depth and Type: Junk in Hole at Tools in Hole at Casing Leaks: Yes No Depth of casing leak(s):
Type Completion: ALT. I ALT. II Depth of: DV Tool: w / sacks of cement Port Collar: w / sack of cement
Packer Type: Size: Inch Set at: Feet
Total Depth: Plug Back Depth: Plug Back Method:

Geological Data:

Table with 4 columns: Formation Name, Formation Top, Formation Base, Completion Information. Rows 1 and 2.

UNDER PENALTY OF PERJURY I HEREBY ATTEST THAT THE INFORMATION CONTAINED HEREIN IS TRUE AND CORRECT TO THE BEST OF MY KNOWLEDGE

Submitted Electronically

Do NOT Write in This Space - KCC USE ONLY
Date Tested: Results: Date Plugged: Date Repaired: Date Put Back in Service:
Review Completed by: Comments:
TA Approved: Yes Denied Date:

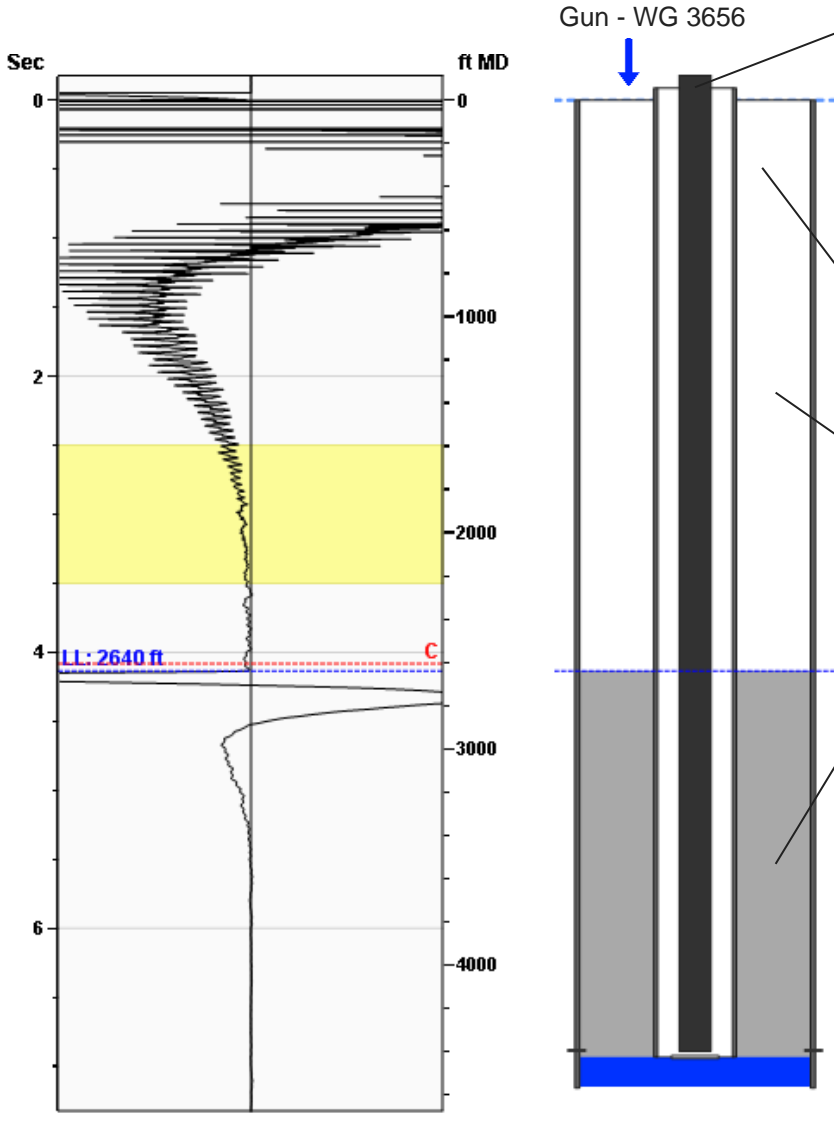
Mail to the Appropriate KCC Conservation Office:

Table with 3 columns: District Office #, Address, Phone. Includes map of Kansas with numbered districts 1-4.

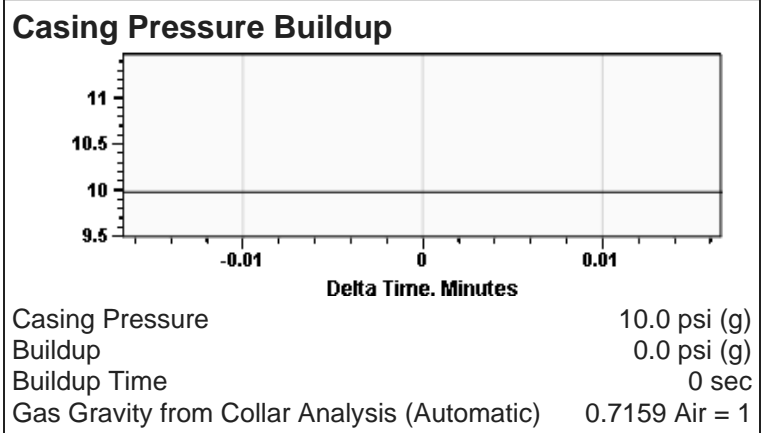
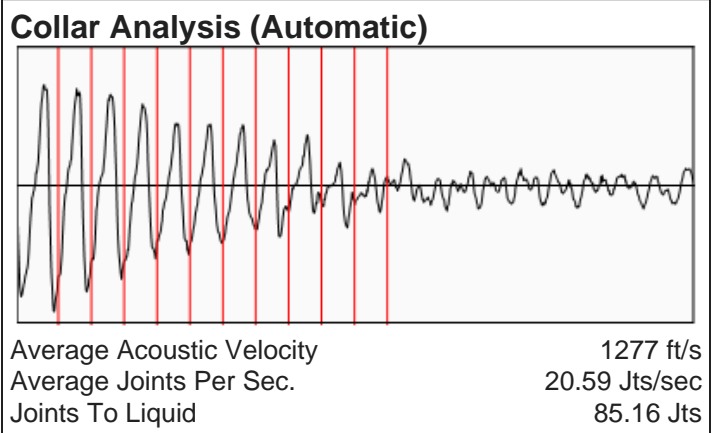


**Liquid Level** **2640 ft MD**

**Fluid Above Pump** 1787 ft TVD  
**Equivalent Gas Free Above Pump** 1787 ft TVD



<b>Production</b>			
Date Entered			
Oil	Current **	Potential **	BBL/D
Water	**	**	BBL/D
Gas	**	**	Mscf/D
IPR Method			Vogel
PBHP/SBHP			-0.00
Producing Efficiency			0.00%
<b>Casing Pressure</b>			
Pressure	10.0 psi (g)		
<b>Annular Gas Flow</b>			
Gas Flow	0.0 Mscf/D		
<b>Fluid Properties</b>			
% Liquid Above Pump	100.00%		
% Liquid Below Pump	**		
<b>Depths</b>			
Pump Intake Depth	4427 ft		
Formation Depth	4418 ft		
<b>Wellbore Pressures</b>			
PIP	608.2 psi (g)		
PBHP	605.3 psi (g)		
SBHP	**		
Gas/Liq Interface	11.6 psi (g)		



**Comments and Recommendations**

Static fluid level for TA  
 Perfs 4396' to 4418'

Echometer Company  
 5001 Ditto Lane  
 Wichita Falls, TX 76302  
 (940) 767-4334  
 info@echometer.com

Conservation Division  
District Office No. 1  
210 E. Frontview, Suite A  
Dodge City, KS 67801



Phone: 620-682-7933  
<http://kcc.ks.gov/>

Dwight D. Keen, Chair  
Shari Feist Albrecht, Commissioner  
Jay Scott Emler, Commissioner

Laura Kelly, Governor

March 05, 2019

Kent Roberts  
AGV Corp.  
PO BOX 377  
123 N MAIN  
ATTICA, KS 67009-0377

Re: Temporary Abandonment  
API 15-007-22810-00-00  
WERNER 3  
SE/4 Sec.21-32S-10W  
Barber County, Kansas

Dear Kent Roberts:

"Your temporary abandonment (TA) application for the well listed above has been approved. In accordance with K.A.R. 82-3-111 the TA status of this well will expire 03/05/2020.

- \* If you return this well to service or plug it, please notify the District Office.
- \* If you sell this well you are required to file a Transfer of Operator form, T-1.
- \* If the well will remain temporarily abandoned, you must submit a new TA application, CP-111, before 03/05/2020.

You may contact me at the number above if you have questions.

Very truly yours,

Michael Maier"