

KANSAS CORPORATION COMMISSION
OIL & GAS CONSERVATION DIVISION

TEMPORARY ABANDONMENT WELL APPLICATION

OPERATOR: License#
Name:
Address 1:
Address 2:
City: State: Zip:
Contact Person:
Phone:
Contact Person Email:
Field Contact Person:
Field Contact Person Phone:

API No. 15-
Spot Description:
Sec. Twp. S. R.
GPS Location: Lat: Long:
Datum: NAD27 NAD83 WGS84
County: Elevation:
Lease Name: Well #:
Well Type: Oil Gas OG WSW Other:
SWD Permit #: ENHR Permit #:
Gas Storage Permit #:
Spud Date: Date Shut-In:

Table with 7 columns: Conductor, Surface, Production, Intermediate, Liner, Tubing. Rows include Size, Setting Depth, Amount of Cement, Top of Cement, Bottom of Cement.

Casing Fluid Level from Surface: How Determined? Date:
Casing Squeeze(s): to w / sacks of cement, to w / sacks of cement. Date:
Do you have a valid Oil & Gas Lease? Yes No
Depth and Type: Junk in Hole at Tools in Hole at Casing Leaks: Yes No Depth of casing leak(s):
Type Completion: ALT. I ALT. II Depth of: DV Tool: w / sacks of cement Port Collar: w / sack of cement
Packer Type: Size: Inch Set at: Feet
Total Depth: Plug Back Depth: Plug Back Method:

Geological Date:

Table with 4 columns: Formation Name, Formation Top, Formation Base, Completion Information. Rows 1 and 2.

UNDER PENALTY OF PERJURY I HEREBY ATTEST THAT THE INFORMATION CONTAINED HEREIN IS TRUE AND CORRECT TO THE BEST OF MY KNOWLEDGE

Submitted Electronically

Do NOT Write in This Space - KCC USE ONLY
Date Tested: Results: Date Plugged: Date Repaired: Date Put Back in Service:
Review Completed by: Comments:
TA Approved: Yes Denied Date:

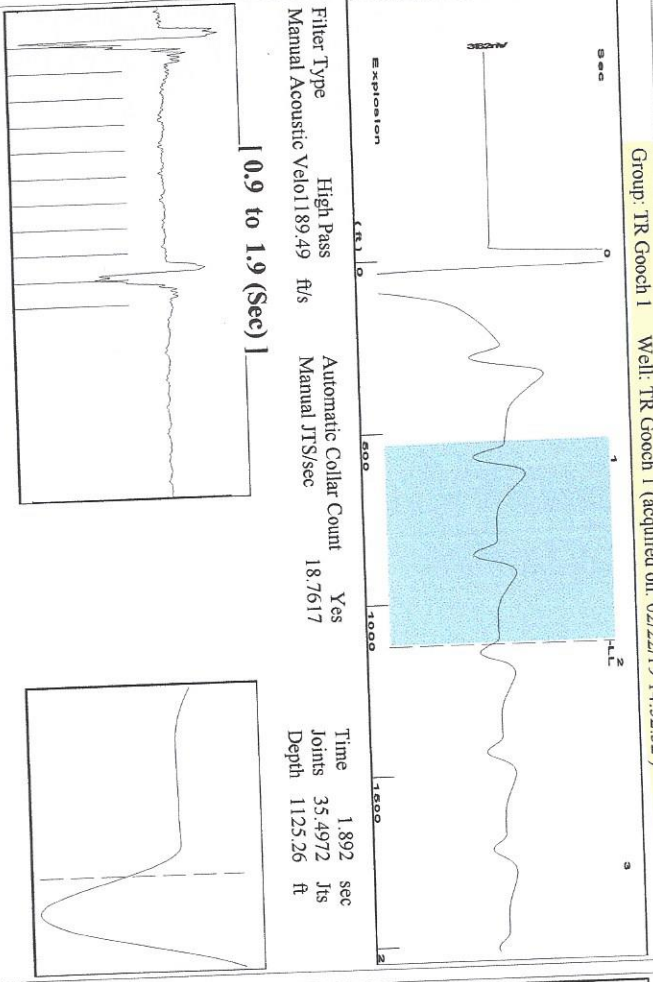
Mail to the Appropriate KCC Conservation Office:

Table with 3 columns: District Office #, Address, Phone. Rows 1-4.



Shot @ 300th SR

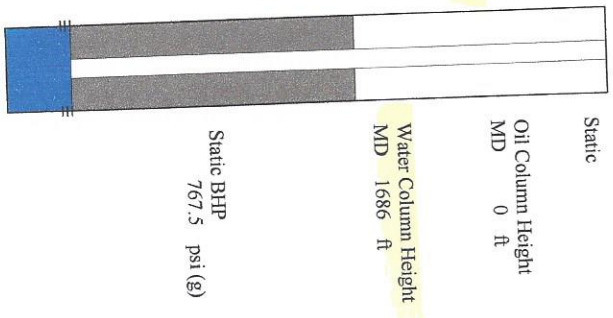
Group: TR Gooch 1 Well: TR Gooch 1 (acquired on: 02/22/19 14:52:52)



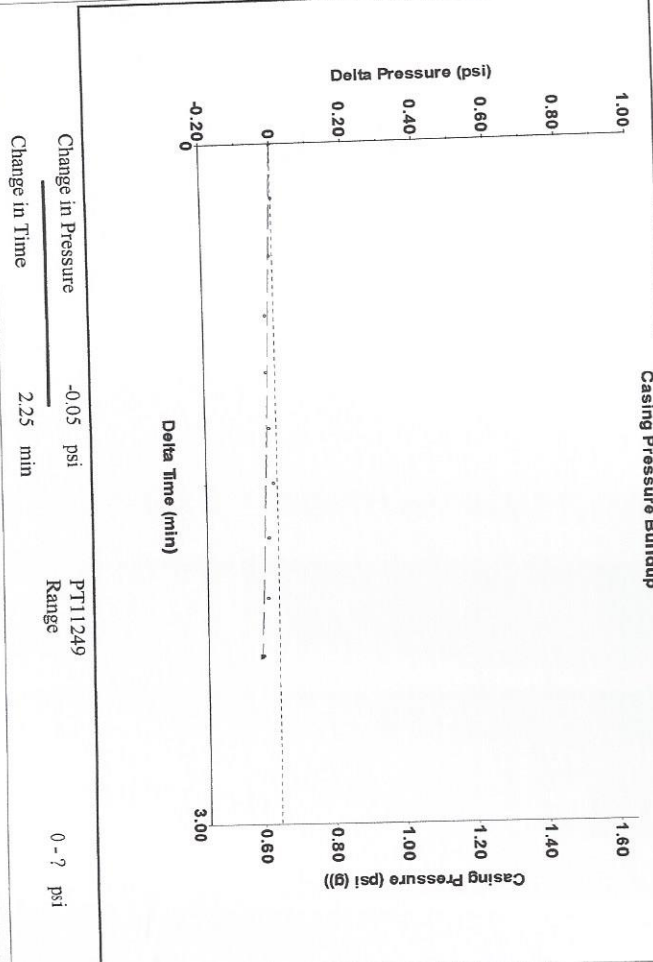
Analysis Method: Automatic

Group: TR Gooch 1 Well: TR Gooch 1 (acquired on: 02/22/19 14:52:52)

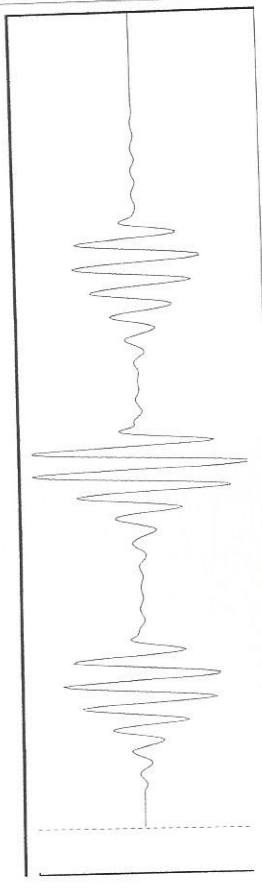
Production Current	Potential	Casing Pressure	0.6 psi (g)	Static
Oil -*- BBL/D	-*- BBL/D	Casing Pressure Buildup	-0.0 psi	Oil Column Height MD 0 ft
Water -*- Mscf/D	-*- Mscf/D	Gas/Liquid Interface Pressure	1.1 psi (g)	Water Column Height MD 1686 ft
Gas -*-	-*-	Liquid Level Depth	1125.26 ft	Static BHP 767.5 psi (g)
IPR Method PBHP/SBHP	Vogel -*-	Pump Intake Depth	2786.00 ft	
Production Efficiency	0.0	Formation Depth	2811.00 ft	
Oil 40 deg API				
Water 1.05 Sp.Gr.H2O				
Gas 0.79 Sp.Gr.AIR				
Acoustic Velocity	1189.49 ft/s			



Group: TR Gooch 1 Well: TR Gooch 1 (acquired on: 02/22/19 14:52:52)



Group: TR Gooch 1 Well: TR Gooch 1 (acquired on: 02/22/19 14:52:52)



Acoustic Velocity	-*- ft/s	Joints counted	2
Joints Per Second	-*- Jts/sec	Joints to liquid level	16.7617
Depth to liquid level	-*- ft	Filter Width	20.7617
Automatic Collar Count	Yes	Time to 1st Collar	-*-

Conservation Division
District Office No. 1
210 E. Frontview, Suite A
Dodge City, KS 67801



Phone: 620-682-7933
<http://kcc.ks.gov/>

Dwight D. Keen, Chair
Shari Feist Albrecht, Commissioner
Jay Scott Emler, Commissioner

Laura Kelly, Governor

February 26, 2019

Katherine McClurkan
Merit Energy Company, LLC
13727 Noel Road, Suite 1200
Dallas, TX 75240

Re: Temporary Abandonment
API 15-189-41218-00-01
T R Gooch 1
SW/4 Sec.08-35S-35W
Stevens County, Kansas

Dear Katherine McClurkan:

"Your temporary abandonment (TA) application for the well listed above has been approved. In accordance with K.A.R. 82-3-111 the TA status of this well will expire 02/26/2020.

- * If you return this well to service or plug it, please notify the District Office.
- * If you sell this well you are required to file a Transfer of Operator form, T-1.
- * If the well will remain temporarily abandoned, you must submit a new TA application, CP-111, before 02/26/2020.

You may contact me at the number above if you have questions.

Very truly yours,

Michael Maier"