

Fall & Associates

Stake and Elevation Service

P.O. Box 222

Pretty Prairie, KS. 67570

785-243-7506

Date 1-9-19

Invoice Number 0104191

MURFIN DRILLING

1-15

Maher

Operator

Number

Farm Name

Rawlins-KS

15 1s 32w

660'FNL 2100'FEL

County-State

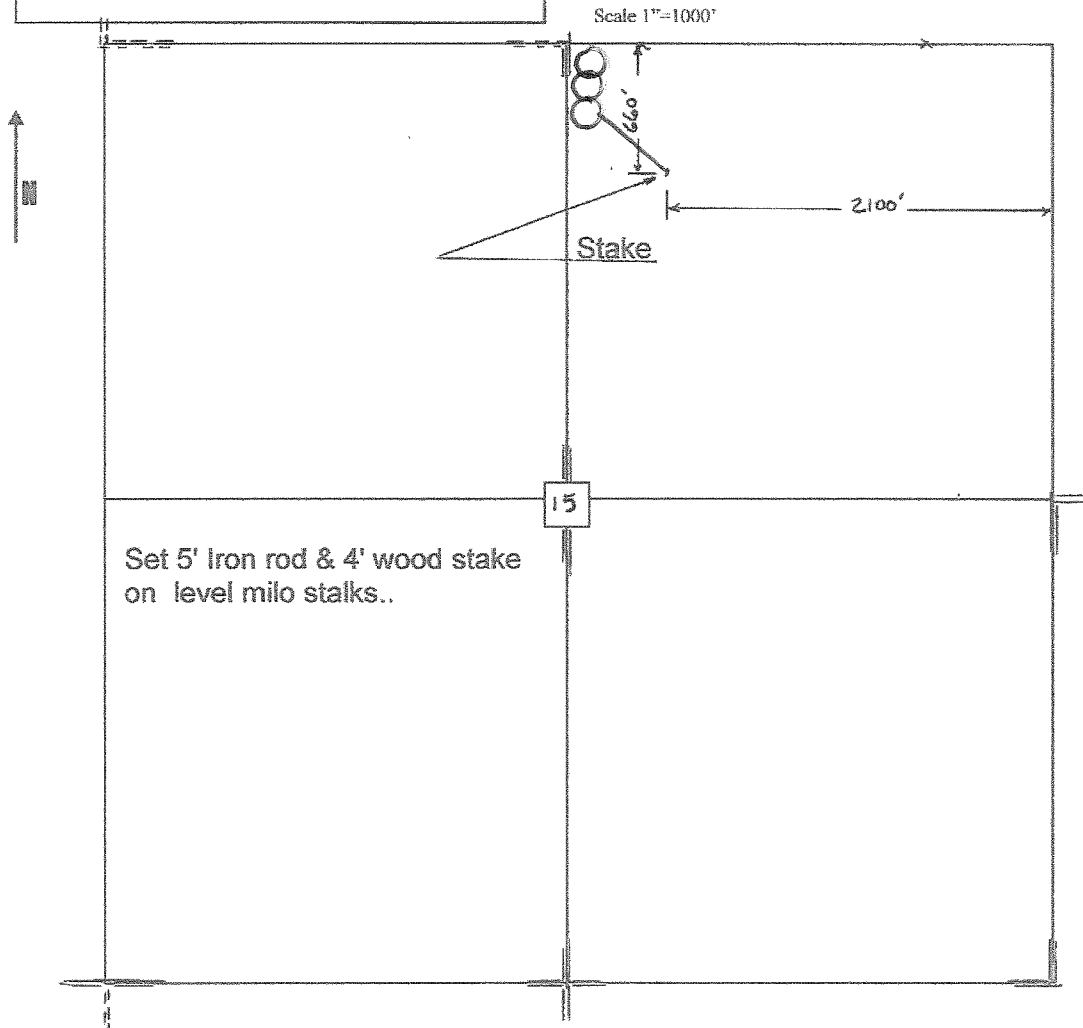
S T R

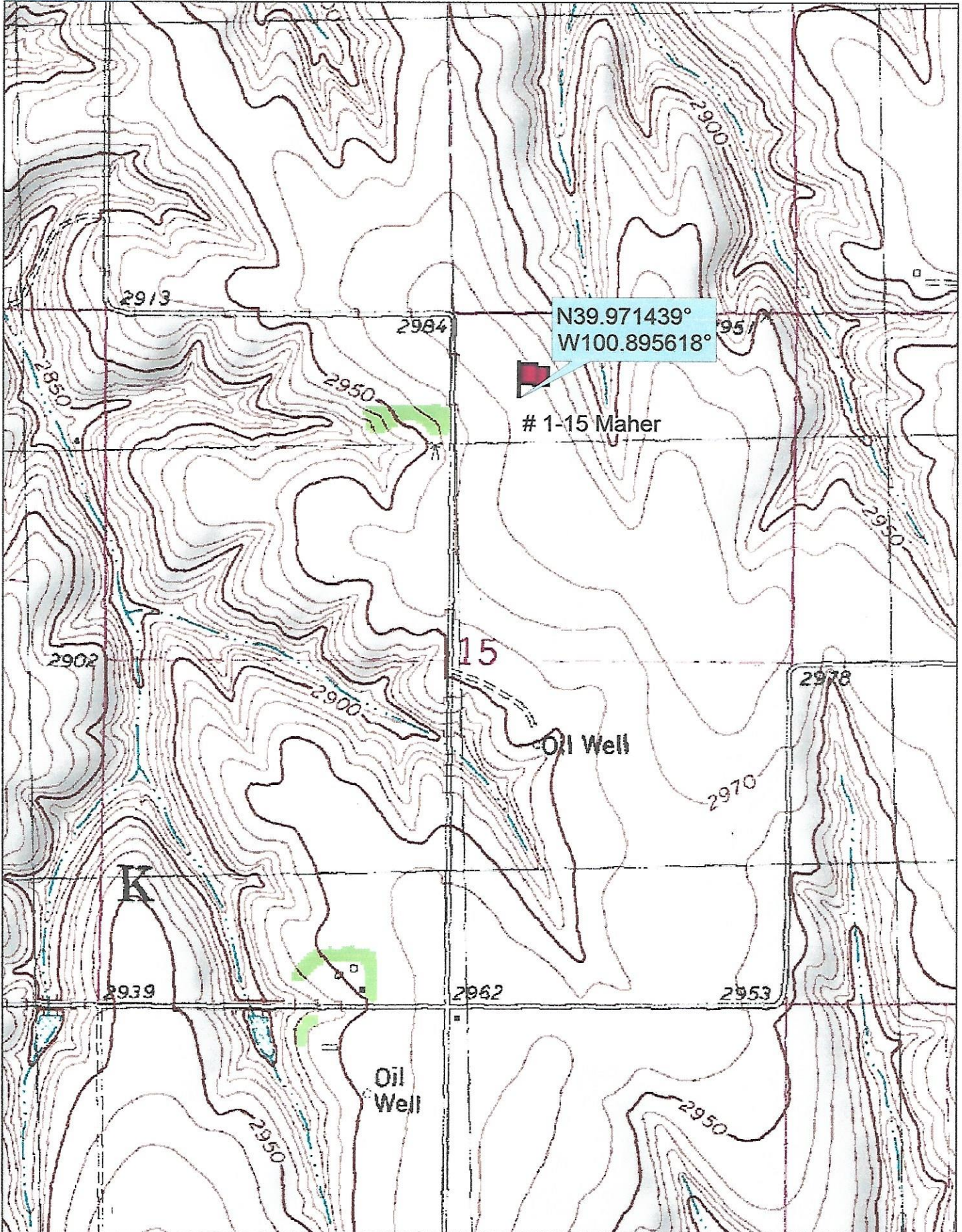
Location

Murfin Drilling
250 N Water
Suite 300
Wichita, KS. 67202

Elevation 2981 Gr.

Ordered By: Shauna

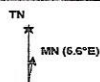




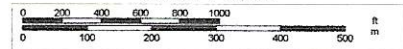
Data use subject to license.

© DeLorme. Topo North America™ 9.

www.delorme.com



Scale 1 : 12,000



1" = 1,000.0 ft Data Zoom 13-1