

# AUSTIN B. KLAUS

Cell 785.650.3629  
Work 785.483.3145  
Ext 225

PO BOX 352  
Russell, KS 67665  
austin.klaus@johnofarmer.com

Scale 1:240 (5"=100') Imperial  
Measured Depth Log

Well Name: PCR #1-23  
Location: Ellsworth County  
License Number: API #15-053-21366  
Spud Date: 9/13/2018  
Surface Coordinates: Section 23, Township 17 South, Range 9 West  
1,138' FSL & 857' FWL  
Bottom Hole Coordinates: Vertical well w/ minimal deviation, same as above  
Ground Elevation (ft): 1774  
Logged Interval (ft): 2400 To: RTD  
Formation: LKC, Arbuckle  
Type of Drilling Fluid: Chemical (Andy's Mud)

Region: Kansas  
Drilling Completed: 9/18/2018  
K.B. Elevation (ft): 1782  
Total Depth (ft): 3290

Printed by STRIP.LOG from WellSight Systems 1-800-447-1534 www.WellSight.com

## OPERATOR

Company: American Oil, LLC  
Address: 1200 Main, Suite 410  
Hays, KS 67601

## GEOLOGIST

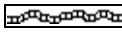
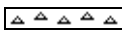
Name: Austin Klaus  
Company: John O. Farmer, Inc.  
Address: 370 W. Wichita Ave.  
Russell, KS 67665

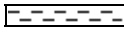



## Comments





The PCR #1-23 well was drilled by Discovery Drilling Rig #4 (Tool Pusher: Galen Gaschler).

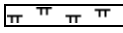
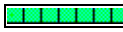
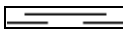
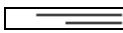
The PCR #1-23 was discovered via 3D seismic survey. Rock samples were gathered and evaluated from 2,400' - 3290'. Oil shows were encountered in the LKC H, J, and Arbuckle. Structurally, the Lansing top was picked 3' high to the comparison well, 660' to the northwest (Groth #2 - 1974'). Structure thickened slightly through the LKC and below, which resulted in an Arbuckle top picked 2' low to the comparison well. However, Arbuckle datum is still considerably higher than production to the east. After evaluation of all oil shows and electric logs, it was decided that 5 1/2" production casing be set to further evaluate the PCR #1-23 on 9/18/2018.

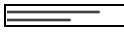



**ROCK TYPES**

 Anhy  
 Bent  
 Brec  
 Cht

 Clyst  
 Coal  
 Congl  
 Dol

 Gyp  
 Igne  
 Lmst  
 Meta

 Mrlst  
 Salt  
 Shale  
 Shcol

 Shgy  
 Siltst  
 Ss  
 Till

**OTHER SYMBOLS**

**POROSITY**

Earthy  
 Fenest  
 Fracture  
 Inter  
 Moldic  
 Organic  
 Pinpoint

Vuggy

**SORTING**

Well  
 Moderate  
 Poor

**ROUNDING**

Rounded  
 Subrnd  
 Subang  
 Angular

**OIL SHOW**

Even

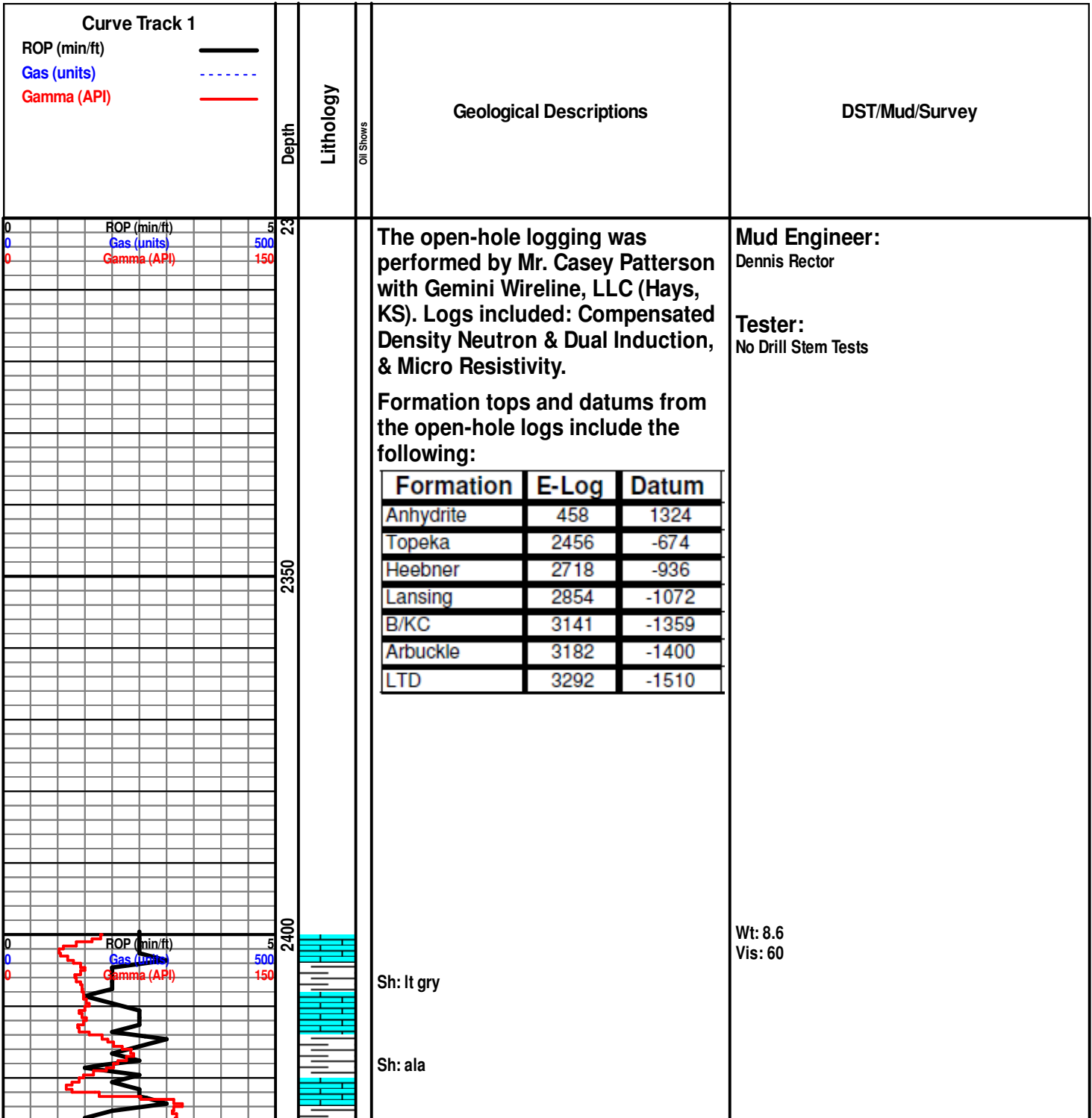
Spotted  
 Ques  
 Dead

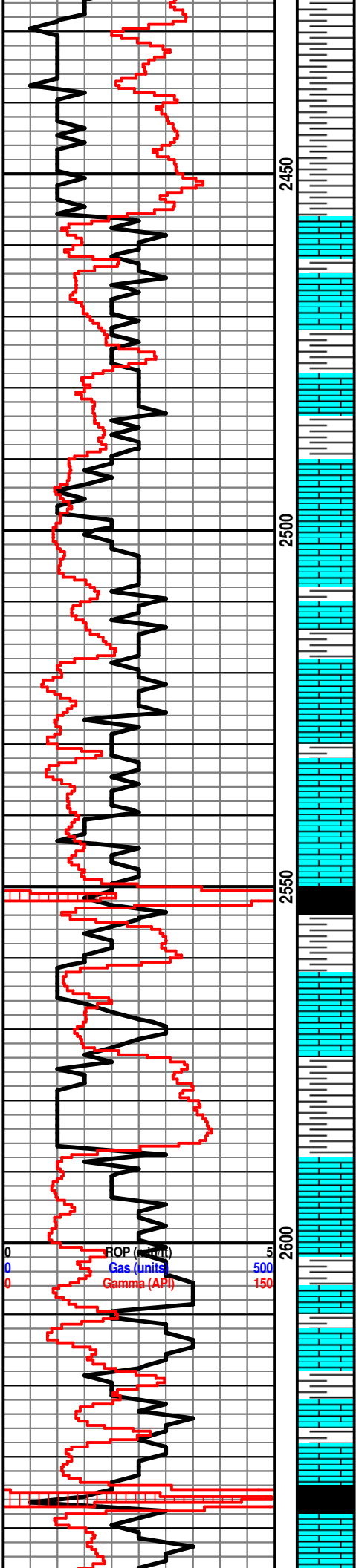
**INTERVAL**

Core  
 Dst

**EVENT**

Rft  
 Sidewall





Sh: lt-drk gry

Sh: ala

**Topeka 2456' (-674)**

Ls: tan-gry, fn-sub xln, mostly DNS

Ls: ala

Ls: tan-gry, fn xln, no visible porosity

Ls: tan-gry, fn xln, fair int xln porosity, scat dead oil stn

Ls: tan-gry, fn xln, no visible porosity, scat chalk

Ls: ala

Sh: drk gry-blk

Sh: lt-drk gry

Ls: tan-gry, fn-sub xln, mostly DNS

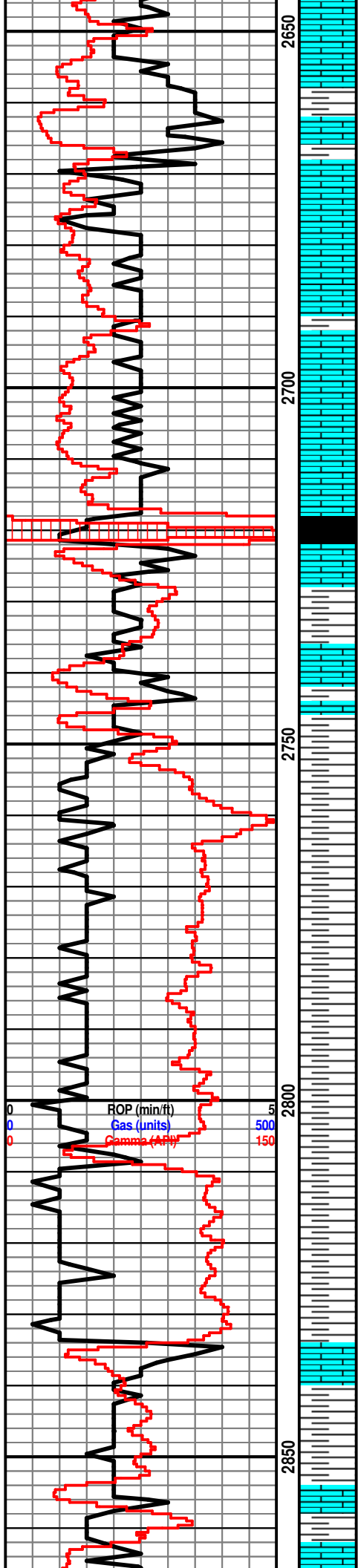
Sh: lt-drk gry

Ls: off wh-tan, fn xln, scat int xln porosity, NSFO, scat chalk

Ls: tan-buff, fn-sub xln, scat int xln porosity, scat chalk

Sh: drk gry-blk

ROP (psi) 5  
 Gas (units) 500  
 Gamma (API) 150



Ls: off wh-tan, fn xln, fair int xln porosity, mostly barren

Ls: tan-gry, fn xln, mostly DNS

Ls: tan-gry, fn-sub xln, DNS, scat chert

Ls: tan-gry, fn xln, scat int xln & pp porosity, NSFO

**Heebner 2718' (-936)**

Sh: blk, carb, fissile

Ls: off wh-tan, fn xln, poor int xln, NSFO, scat chalk

Sh: lt gry

Sh: ala

Sh: lt gry

Sh: ala

Sh: lt gry

Sh: ala

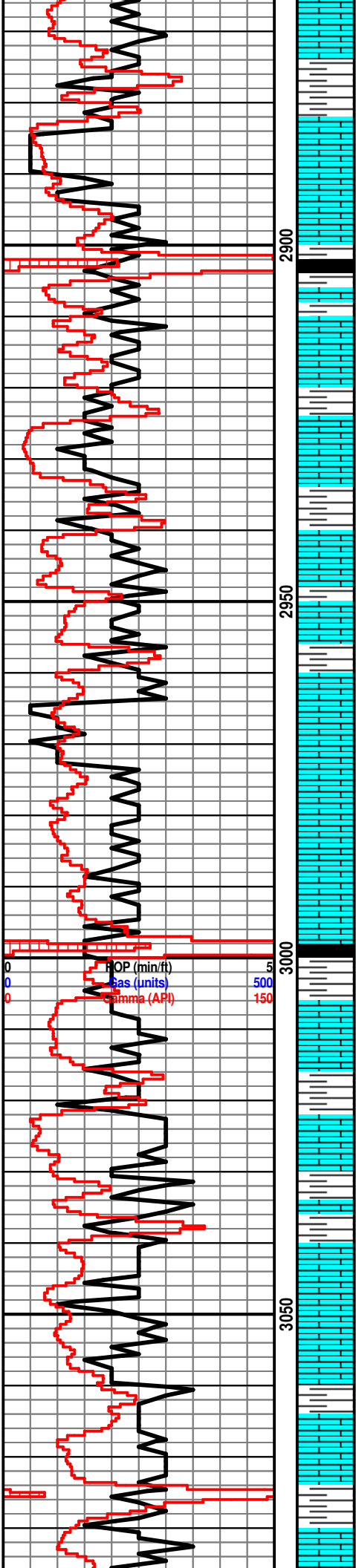
Sh: lt-drk gry

**Lansing 2854' (-1072)**

Ls: off wh-tan, fn xln, mostly DNS

Sh: lt-drk gry

ROP (min/f) 5  
 Gas (units) 500  
 Gamma (API) 150



Ls: tan-gry, fn xln, mostly DNS

Sh: lt gry

Ls: off wh-tan, fn xln, ool, fair-good oom porosity, scat dead oil stn in porosity, NSFO

Sh: lt-drk gry

Ls: off wh-tan, fn xln, fair int xln porosity, scat ool, sl oil stn in porosity, sl odor

Sh: lt gry

Ls: off wh-tan, fn xln, foss, fair-good int foss porosity, scat dead oil stn, sl odor, scat chalk

Sh: drk gry

Ls: off wh-tan, fn xln, foss, scat int foss porosity, scat dead oil stn, NSFO

Ls: off wh-tan, fn xln, ool, fair-good oom porosity, barren, scat chert- off wh

Ls: off wh-tan, fn xln, barren

Sh: drk gry-blk

Ls: tan-lt gry, fn xln, scat int xln porosity, lt oil stn in porosity, VSSFO, scat chalk

Sh: lt-drk gry

Ls: off wh-tan, fn xln, scat foss, fair int foss & scat int xln porosity, vry lt oil stn, fnt odor

Sh: lt-drk gry

Ls: off wh-tan, fn xln, foss, poor-fair int foss porosity, fair oil stn, VSSFO, poor-fair odor, scat chalk

Sh: lt gry

Ls: off wh-tan, fn-sub xln, mostly DNS, barren, scat chert-off wh

Sh: lt-drk gry

Wt: 8.9  
Vis: 50

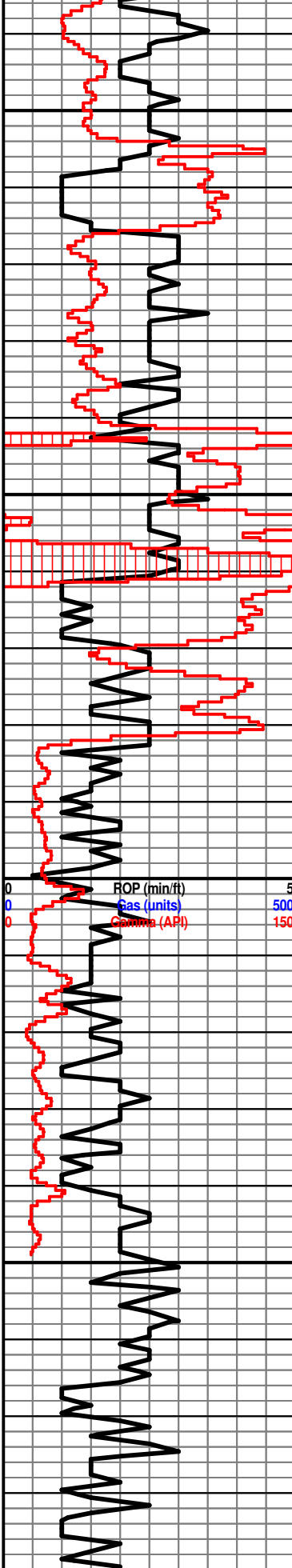
0 5  
0 500  
0 150  
ROP (min/ft)  
Gas (units)  
Gamma (API)

2900

2950

3000

3050



Ls: off wh-tan, fn xln, scat foss, poor int xln porosity, scat dead oil stn, NSFO, scat chert-off wh

3100

Sh: drk gry-blk

Ls: off wh-tan-gry, fn xln, scat int xln porosity, barren

Ls: ala

**B/KC 3140' (-1358)**

Sh: lt-gry

Ls: tan-gry, fn-sub xln, mostly DNS, NSFO

Sh: lt gry-brn

Ss: qtz, off wh, fn grn, mostly rnd, fairly well sorted, poor - scat fair int grn porosity, lt oil stn, fair odor, NSFO

**Arbuckle 3182' (-1400)**

Dolo: off wh-tan, fn xln, fair-good sucrosic xln porosity, fair-good oil sat, SSFO, fair-good odor

Dolo: off wh-tan, fn-md xln, fair-good sucrosic xln porosity, good oil sat, SSFO, good odor, fair yel fluor

Dolo: off wh-tan, md xln, fair-good sucrosic xln porosity, fair-good oil sat, SSFO, good odor, scat sh: drk grn, wxy

Dolo: off wh-tan, fn-md xln, fair-good int xln porosity, fair-good oil sat, SSFO, fair-good odor

Dolo: ala

Dolo: off wh-tan, fn-md xln, fair int xln porosity, fair oil sat, VSSFO, fair-good odor

Dolo: off wh-tan, fn-md xln, scat foss, fair int xln porosity, barren

Dolo: ala

Wt: 9.3  
 Vis: 60