



Musgrove

Petroleum Geology
212 Main Street, Claflin KS

GEOLOGIST'S REPORT

DRILLING TIME AND SAMPLE LOG

COMPANY Pauley Oil
 LEASE S. Rolfs #6
 FIELD Geneseo-Edwards
 LOCATION E2-W2-E2-SW (1320' FSL&1910 FWL)
 SEC 15 TWSP 17S RGE 8W
 COUNTY Ellsworth STATE KS

ELEVATIONS

KB 1765'
 DF _____
 GL 1756'
 Measurements Are Al
 From KB

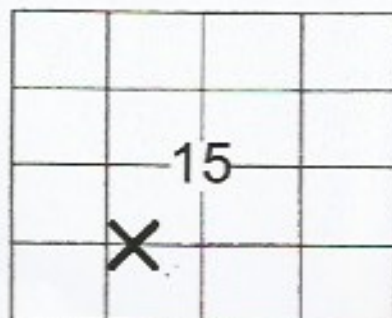
CONTRACTOR Southwind Drilling, Inc. Rig # 3
 SPUD 9/21/2018 COMP 09/27/2018
 RTD 3600' LTD 3600'
 MUD UP 2500' TYPE MUD Chemical

CASING
 SURFACE 8 5/8" @350'
 PRODUCTION 5 1/2" @ 3381'

ELECTRICAL SURVEYS
 PIONEER ENERGY
 DIL, MEL, CNL/CDL

SAMPLES SAVED FROM 2650' TO _____
 DRILLING TIME KEPT FROM 2650' TO _____
 SAMPLES EXAMINED FROM 2650' TO RTD
 GEOLOGICAL SUPERVISION FROM 2650' TO _____
 GEOLOGIST ON WELL Jim Musgrove

FORMATION TOPS	LOG	SAMPLES
HEEBNER	2682 -917	RTD 3600 -1835
TORONTO	2703 -938	LTD 3600 -1835
DOUGLAS	2714 -949	
BROWN LIME	2803 -1038	
LANSING	2826 -1061	
BKC	3151 -1386	
CONGLOMERATE	3179 -1414	
Simpson Sd. # 1	3246 -1481	
Simpson Sd. # 2	3288 -1523	
ARBUCKLE	3292 -1527	



Company: Pauley Oil
 Lease: S. Rolfs #6

SEC: 15 TWN: 17 S RNG: 8 W
 County: ELLSWORTH
 State: Kansas
 Drilling Contractor: Southwind Drilling,
 Inc - Rig 2
 Elevation: 1756 GL
 Field Name: Geneseo-Edwards

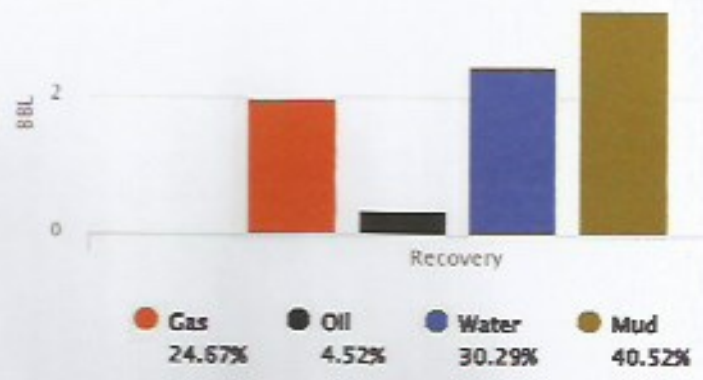
5	0.97115	SLOCM	0	1	0	99
126	1.79298	SLOCSLWCHGCM	35	5	10	50
252	3.58596	SLOCSLGCHMCW	15	5	40	40
63	0.89649	SLOGCHWCM	20	5	35	40
63	0.89649	SLOCHWCHGCM	32	3	30	35
63	0.89649	SLOCMCHWCG	42	3	30	25

Total Recovered: 572 ft
 Total Barrels Recovered: 8.13956

Reversed Out
 NO

Recovery at a glance

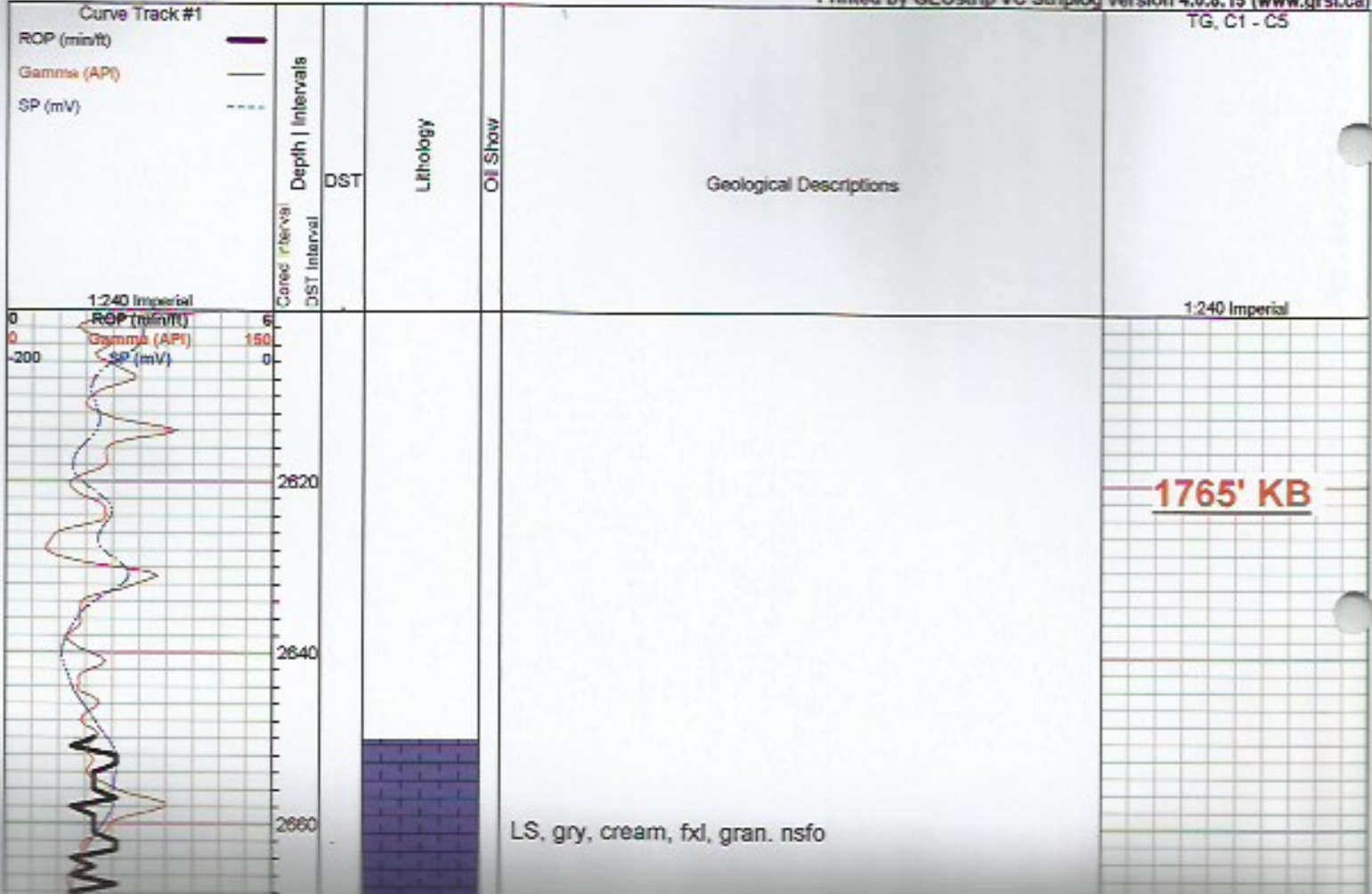
Initial Hydrostatic Pressure	1507	PSI
Initial Flow	17 to 136	PSI
Initial Closed in Pressure	1050	PSI
Final Flow Pressure	137 to 271	PSI
Final Closed in Pressure	1043	PSI
Final Hydrostatic Pressure	1504	PSI
Temperature	116	°F
Pressure Change Initial Close / Final Close	0.6	%



LEGEND

- Oil Show
 - Good Show
 - Fair Show
 - Poor Show
 - Spotted or Trace
 - Questionable Stn
 - Dead Oil Stn
 - Fluorescence
 - ★ Gas
- DST
 - DST Int
 - DST alt
 - Core
 - || tail pipe

Printed by GEOstrip VC Striplog version 4.0.8.15 (www.grsl.ca)



Tr. LS, tan, fxl, dense

Sh, gry, gryish green

Toronto 2706.0 (-941.0)

LS, gry, tan, slightly cherty (dense)
Tr. white chalky LS, no shows

Douglas 2718.0 (-953.0)

Sd, gry, gryish green, vfg. mica in pts, few firable no shows

Sh, gry, gryish green, silty, no shows

LS, white, gry, chalky, poor porosity

-----Poor Samples-----

Brown Lime 2806.0 (-1041.0)

LS, tan, fxl, (dense)

Sh, gry, silty, soft

Lansing 2826.0 (-1061.0)

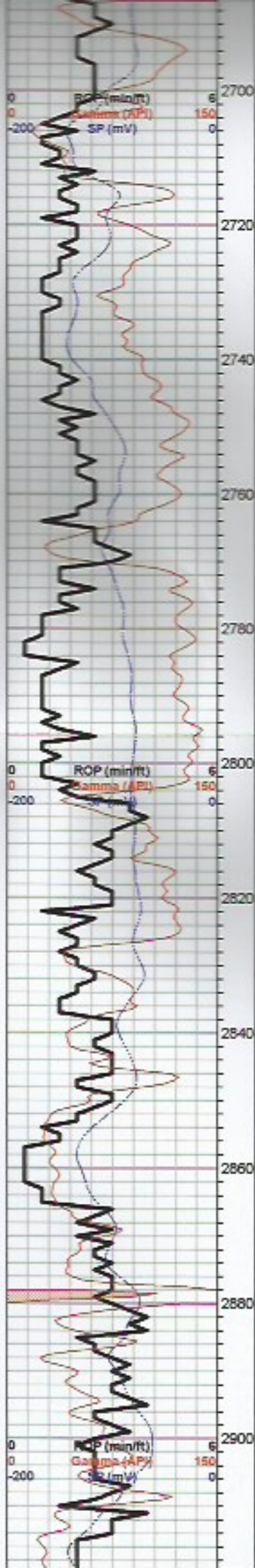
LS, white, cream, fxl, few foss, chalky, no shows

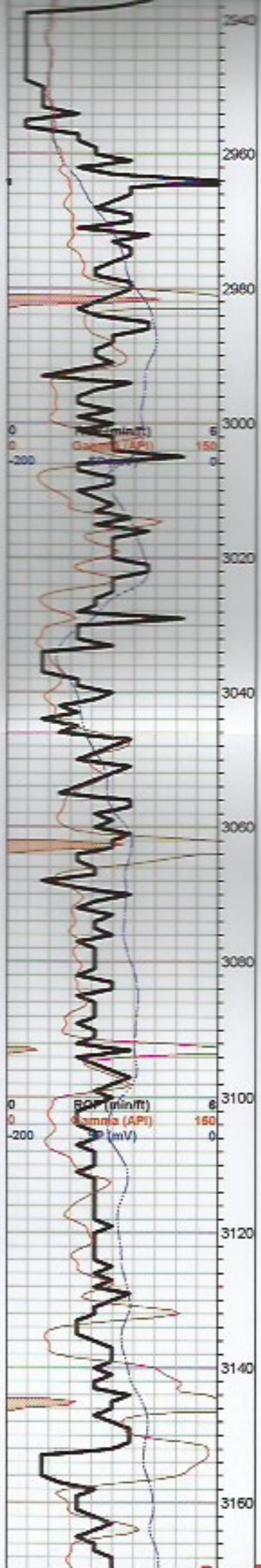
LS, white/ gry, oom, chalky, bm sptty stain, sfo, ft. odor

LS, white, gry, foss, in pt. (dense)

LS, gry, dk gry, foss, slightly cherty, (dense) poorly developed porosity

Tr. gry, white boney chert





LS, white, tan, oom, fair- good oom porosity, ???
brown stain(discoloration), nsfo, ft. odor

LS, tan, gry, cherty, (dense)

Sh, black carb

LS, white, gry, sl. foss, poor vis. porosity, chalky, no
shows

LS, white, tan, fxl, fine oom/ vuggy porosity, nsfo, no
odor

LS, gry, tan, fxl- in pt, slightly cherty, no shows

LS, white, cream, chalky

Sh, black carb

LS, gry, tan, slightly cherty

LS, gry, tan, slightly cherty (dense)

Sh, gry, green

BKC 3153.0 (-1388.0)

Sh, gry, green / maroon

LS, gry/ tan, mottled, f- med xln, chalky (mar. tinted)



LS, white/ gry, f- med xln
chert, + gry/ boney shale

a/a, + orange, pk chert

LS, white, gry, f- med xln,
Chert, gry/ dk gry sh.

LS, a/a

Simpson Sd.#1 3246.0 (-1481.0)

Sd. clear white qtz, rounded sub rounded, friable, tr. poor stain, nsfo, no odor

Sd. clr, qtz, f. grained, sub rounded, fair - sorting friable, brown / gry stain, nsfo, no odor

Sd. tr. stain, sfo, ??? odor a/a/ (**wrong depth**)

Sh, maroon, green waxey, shale, tr. yellow med xln dolomite, tr. gry/ white/ tan, sd, few dolomitic, poor vis. porosity

Simpson Sd. #2 3288.0 (-1523.0)

Tr. gry, white, tan, sand, few dolomitic, poor vis. porosity, sfo fl. odor

Arbuckle 3291.0 (-1526.0)

Dol. white, tan, fxl, few med xln, suc. scattered porosity, brn stain, sfo, odor

Dol. white/ cream, gry, med xln, good in xln porosity, fair stain sat, sfo, fl. odor

Dol. a/a dec. stain, tr. fo. fl. odor

Dol., gry, f-med., suc in pt, + tan, ool slightly cherty, dolomitic, no shows

Dol., white, cream, suc. scattered porosity, + gry opaque, to clr chert

Dol, a/a

1st Open:
BOB 8 mins

2nd Open:
BOB 11.5 mins.

Recovery:
572' O&GCWM

Pressures:
ISIP: 1050 psi
FSIP: 1043 psi
IFP: 17-136 psi
FFP: 137-271 psi
HSH: 1507-1504 psi

Dol. a/a, + tan, and ool cherts

Dol. tan, gry, cream, fld, suc. few slightly cherty, poor porosity

LS, tan, dk tan, gry, slightly cherty, poor porosity, n/s

Dol. tan, gry, pk fld, sligly cherty, poor porosity

Dol. white, gry, pk, med xln, fair/ good inxn porosity

Dol., white, gry, med - pr xln, inxn porosity, no shows

RTD 3600.0 (-1835.0)

