

Fall & Associates

State and Elevation Service

P.O. Box 222

Pretty Prairie, KS. 67570

785-243-7506

Date 2-12-19

Invoice Number 0207191

MURFIN DRILLING

1-16

Frisbie 'B'

Operator

Number

Farm Name

Rawlins-KS

16

2s

35w

990'FSL 1980'FWL

County-State

S

T

R

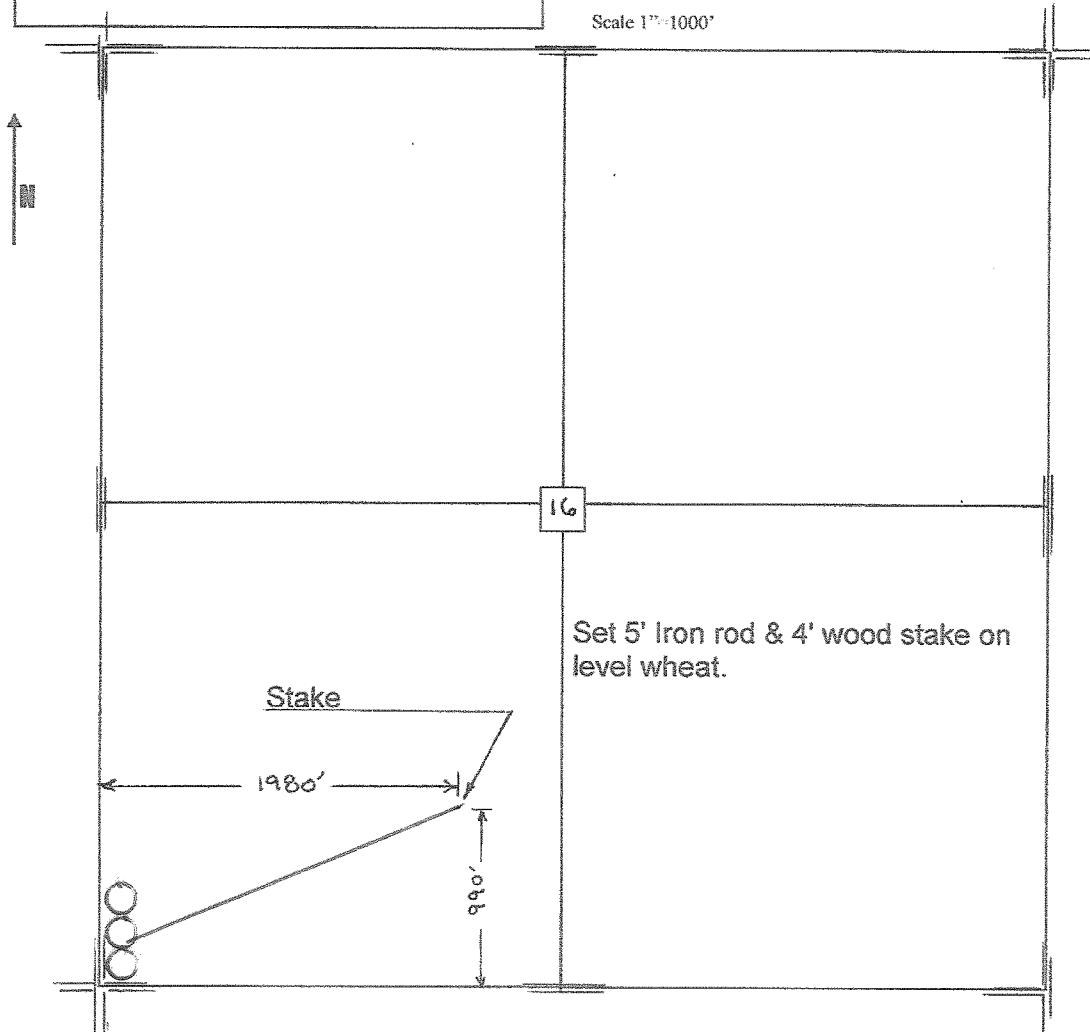
Location

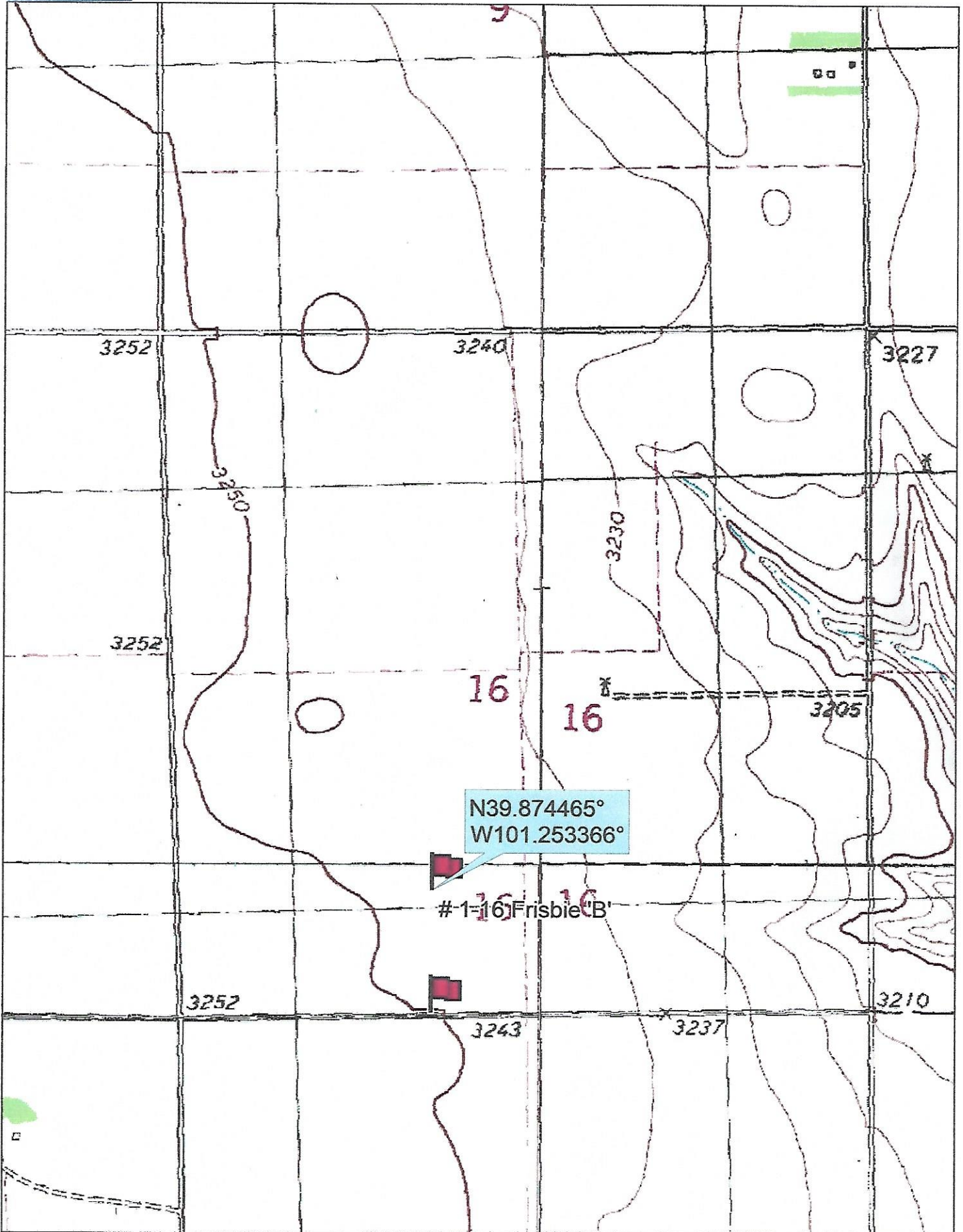
Murfin Drilling
250 N. Water
Suite 300
Wichita, Ks. 67202

Elevation 3244 Gr.

Ordered By: Shauna

Scale 1"=1000'





Data use subject to license.

© DeLorme. Topo North America™ 9.

www.delorme.com

