

Fall & Associates

Stake and Elevation Service

P.O. Box 222

Pretty Prairie, KS. 67570

785-243-7506

Date 2-12-19

Invoice Number 0207191

MURFIN DRILLING

1-4

Marintzer

Operator

Number

Farm Name

Rawlins-KS

4

2s

31w

780'FSL 2310'FEL

County-State

S

T

R

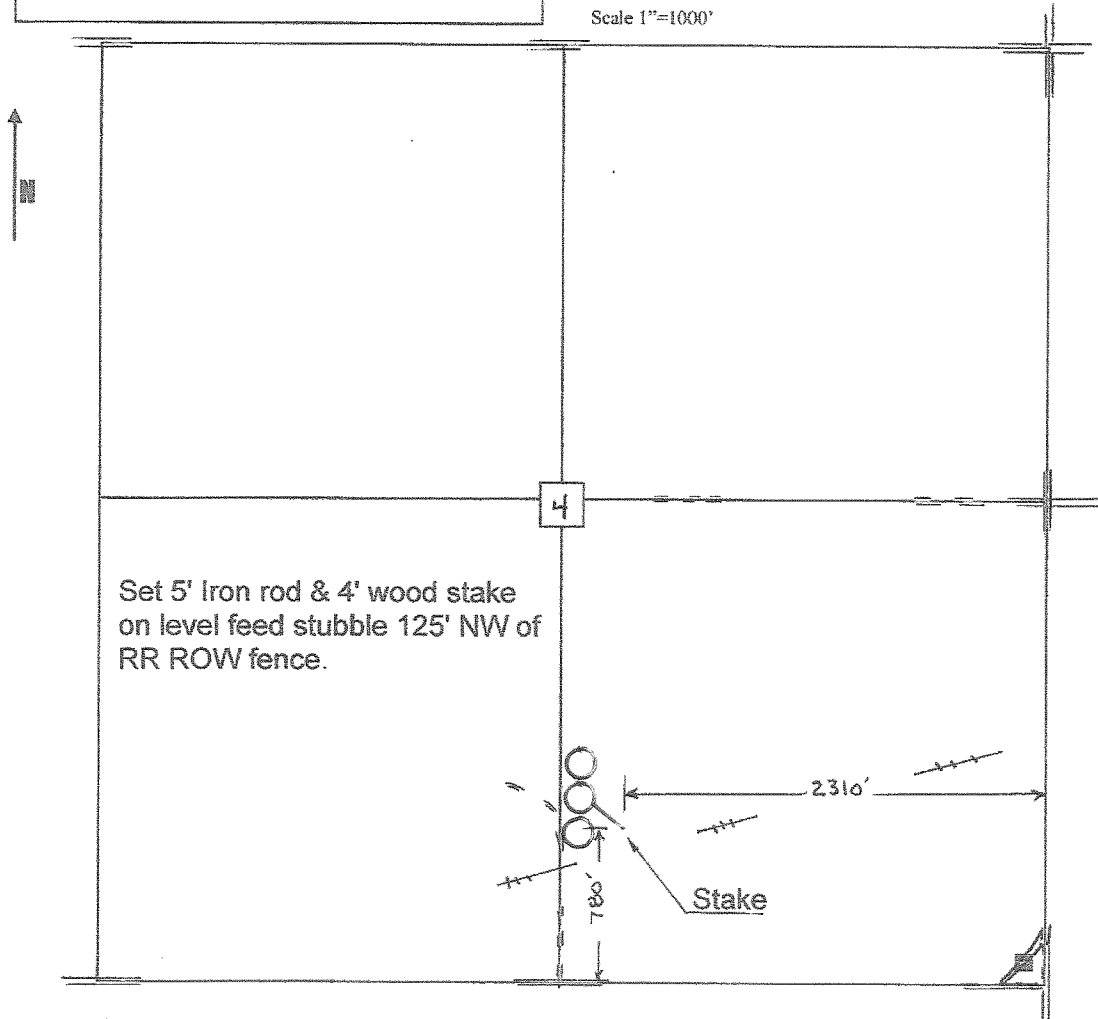
Location

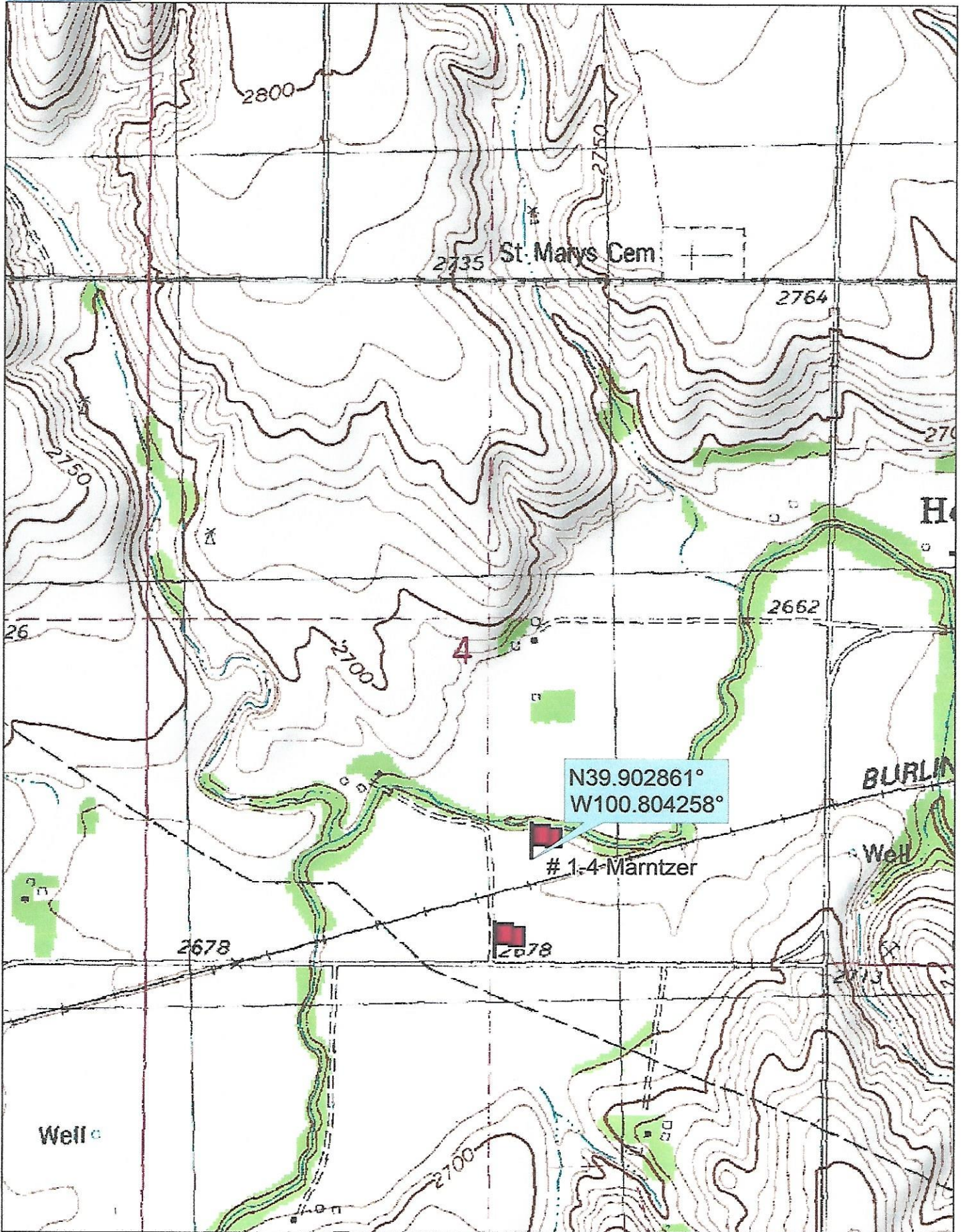
Murfin Drilling
250 N. Water
Suite 300
Wichita, Ks. 67202

Elevation 2668 Gr.

Ordered By: Shauna

Scale 1"=1000'

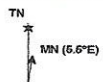




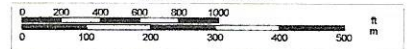
Data use subject to license.

© DeLorme. Topo North America™ 9.

www.delorme.com



Scale 1 : 12,000



1" = 1,000.0 ft Data Zoom 13-1