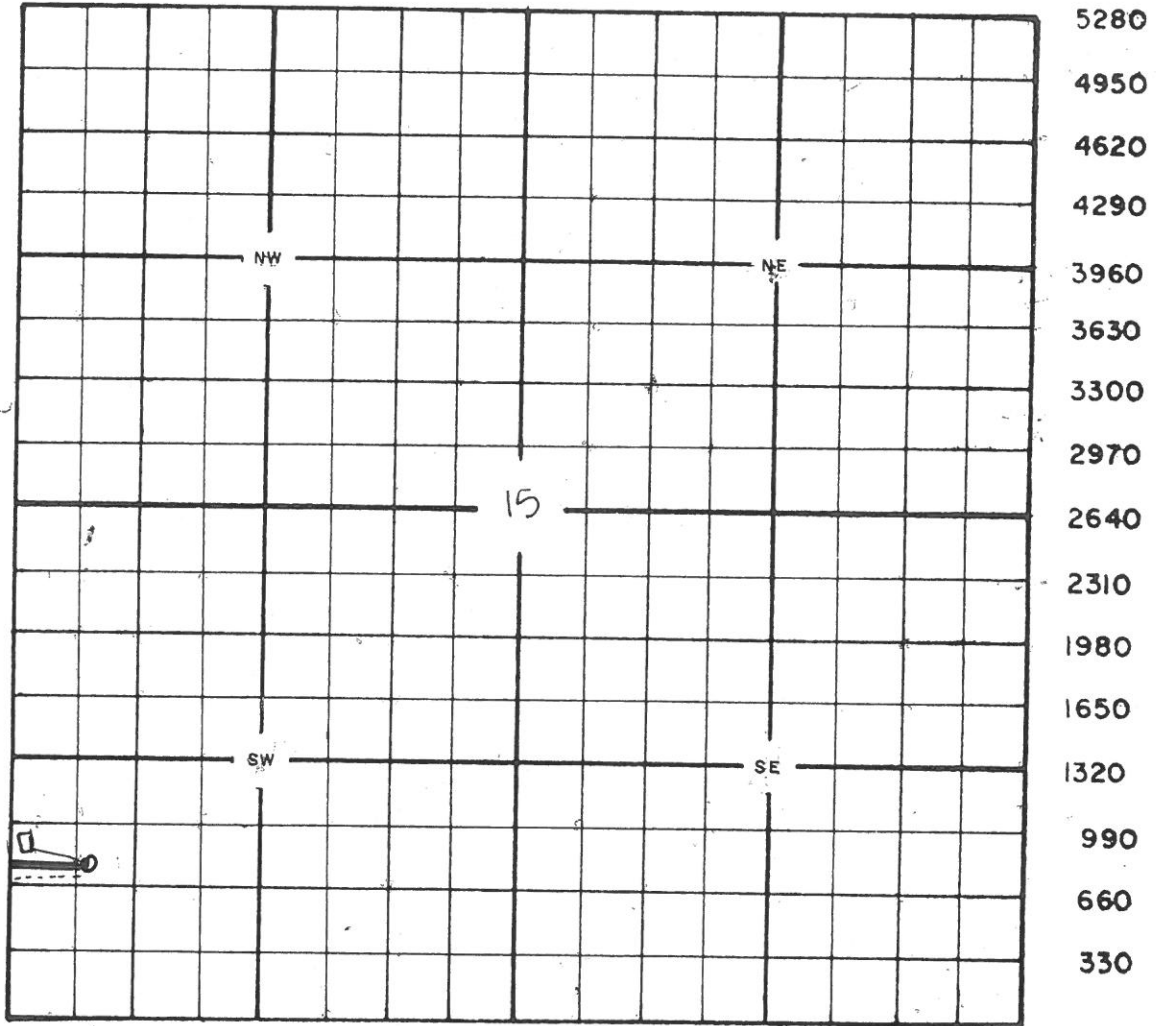
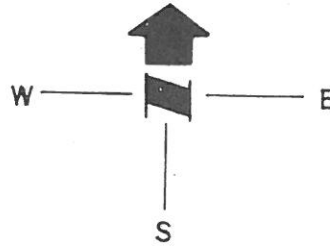


CENTRAL KANSAS SURVEYING & MAPPING

2344 Washington - Great Bend, Kansas 67530 - (316) 792-5754 or (316) 792-2873



5280
4950
4620
4290
3960
3630
3300
2970
2640
2310
1980
1650
1320
990
660
330

**BEAR PETROLEUM, LLC
 RYAN LEASE
 SW. 1/4, SECTION 15, T22S, R20W
 PAWNEE COUNTY, KANSAS**

DIRT (K ROAD) ROAD

Notes:

1. Set iron rod at location site.
2. All flagging Red & Yellow.
3. Overhead power available at S. & W. lines and S. 1/2 of E. line, Sec. 15.
4. Kansas One Call System Inc. should be notified before excavation (1-800-344-7233).
5. CAUTION: Various pipelines in Sec. 15.
6. Contact landowner for best access.
7. Location fell in a draw, set (2) alternates per representative.

Drillsite Location
 Ryan "A" #2
 780'FSL 340'FWL

Ground Elevation = 2191

Y = 535692 X = 1708417

State Plane-NAD 27-Kansas South

Latitude 38.133522 Longitude -99.513759

NGS 84-NAD 83

(Alt. 75'South)

*Alternate Location

705'FSL 340'FWL

Ground Elevation = 2194

Y = 535617 X = 1708416

Latitude 38.133316 Longitude -99.513759

(Alt. 100'South)

*Alternate Location

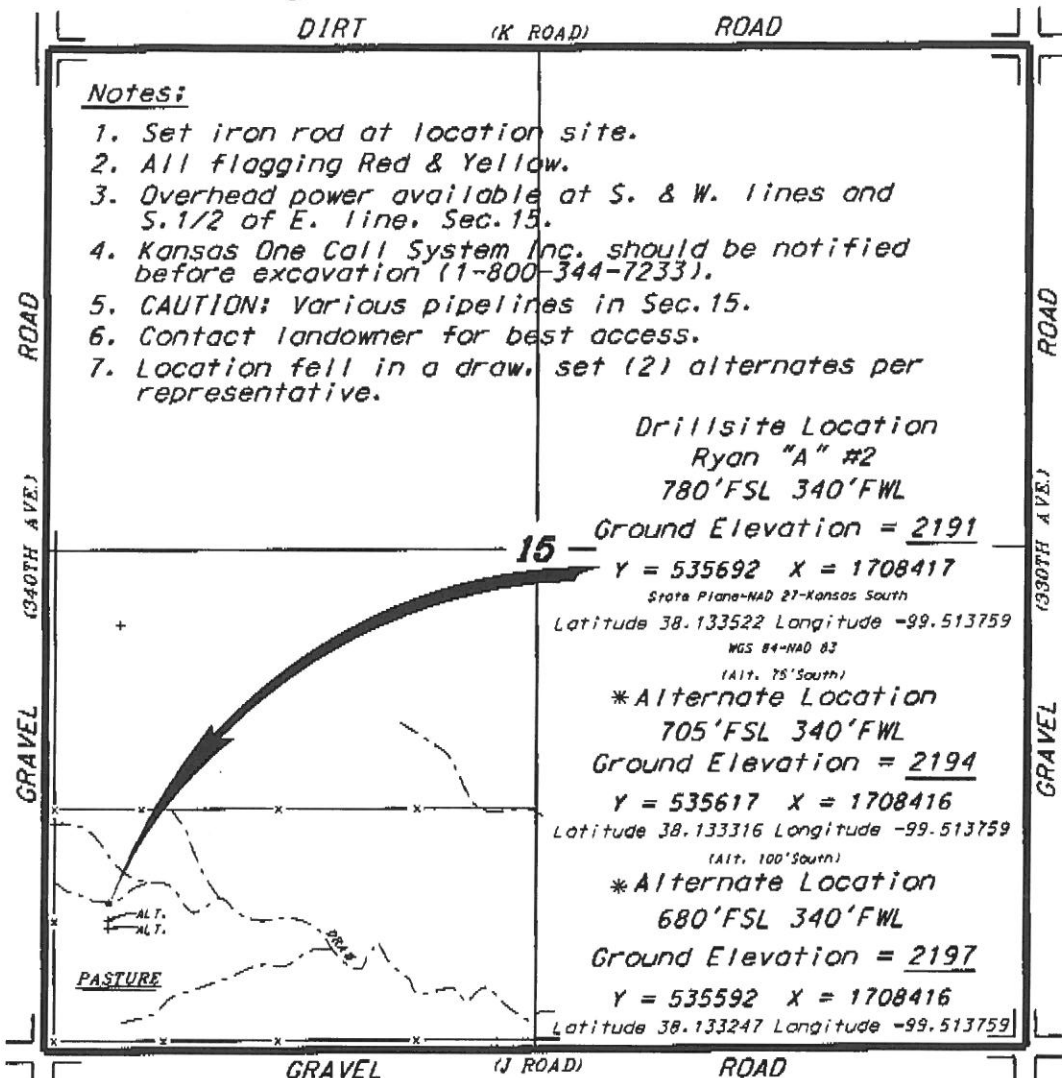
680'FSL 340'FWL

Ground Elevation = 2197

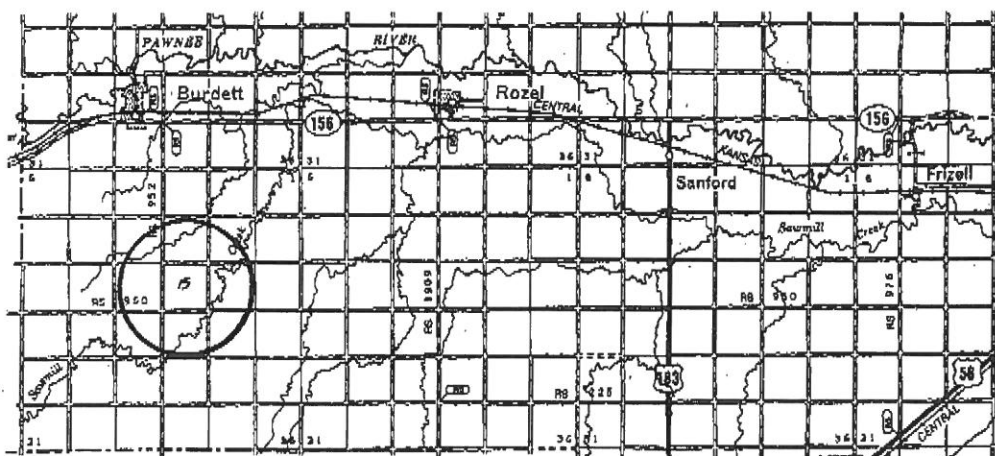
Y = 535592 X = 1708416

Latitude 38.133247 Longitude -99.513759

GRAVEL (J ROAD) ROAD

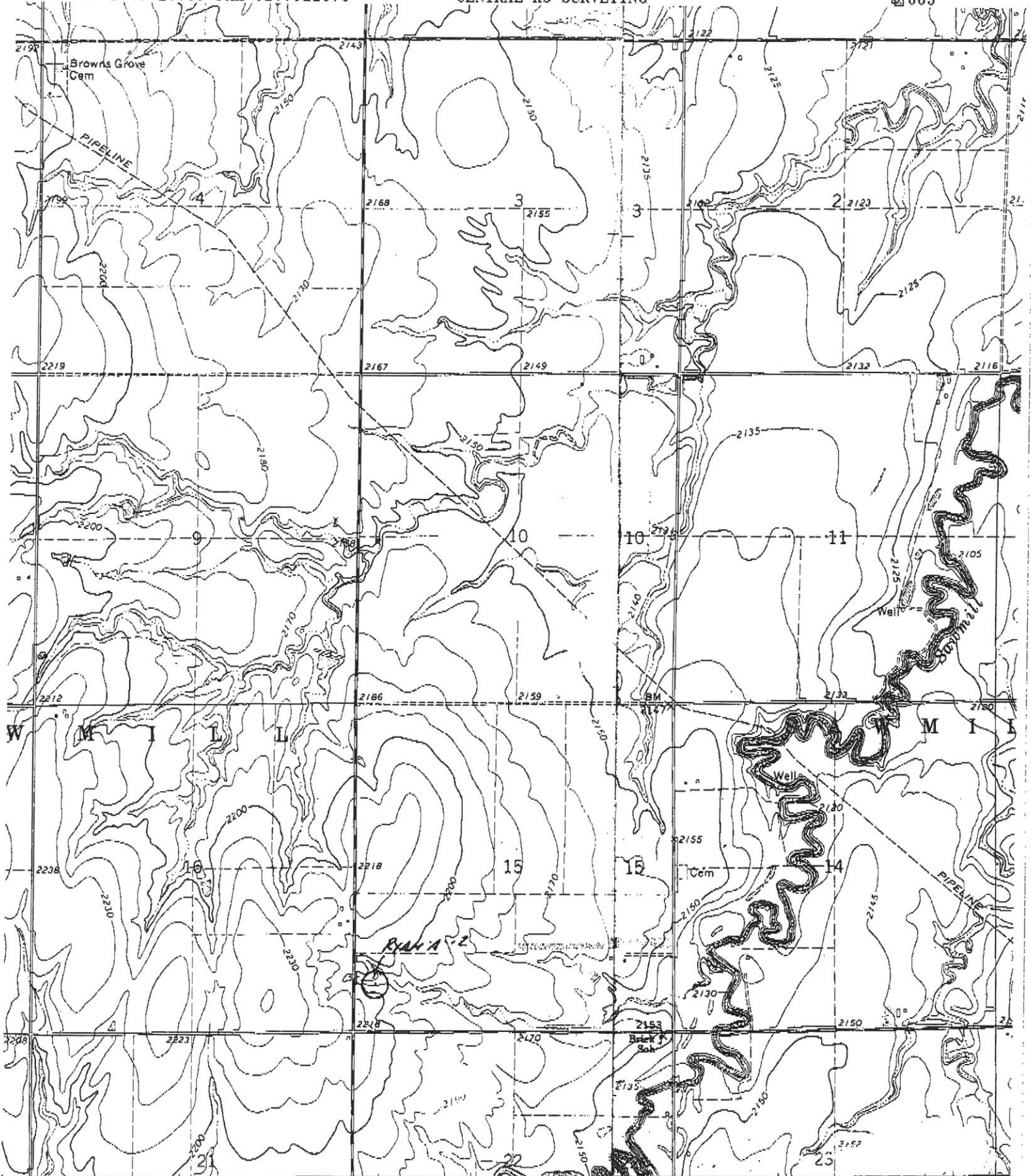


*Ingress and egress to location as shown on this plat is for usage only and may not be legally opened for public use. Contact landowner, tenant and county road department for access.



* Controlling data is based upon the best maps and photographs available to us and upon a regular section of land containing 640 acres.
 * Approximate section lines were determined using the normal standard of care of oilfield surveyors practicing in the state of Kansas. The section corners, which establish the precise section lines, were not necessarily located, and the exact location of the wellsite location in the section is not guaranteed. Therefore, the operator assuming this service and accepting this plat and all other parties relying thereon agree to hold Central Kansas Oilfield Services, Inc., its officers and employees harmless from all losses, costs and expenses and said entities released from any liability from incidental or consequential damages.
 * Elevations derived from National Geodetic Vertical Datum.

Date February 18, 2019



1540000 E. 99°30' 157 158
 INTERIOR—GEOLOGICAL SURVEY, WASHINGTON, D. C.—1971
 OFFERLE 18 MI.

ROAD CLASSIFICATION

Primary highway, all weather, hard surface	Light-duty road, all weather, improved surface
Secondary highway, all weather, hard surface	Unimproved road, fair weather

U. S. Route

Mapped, edited, and published by the Geological Survey in cooperation with State of Kansas agencies
 Control by USGS and USC&GS
 Topography by photogrammetric methods from aerial photographs taken 1968. Field checked 1970
 Cylindrical projection. 1927 North American datum
 10,000-foot grid based on Kansas coordinate system, south zone