



# Fall & Associates

Stake and Elevation Service

P.O. Box 222

Pretty Prairie, KS. 67570

785-243-7506

Date 2-13-19

Invoice Number 0208191

BEREXCO, LLC

2-4

McFee Unit

Operator

Number

Farm Name

Cheyenne-KS

4

2s

37w

2640'FNL 1980'FWL

County-State

S

T

R

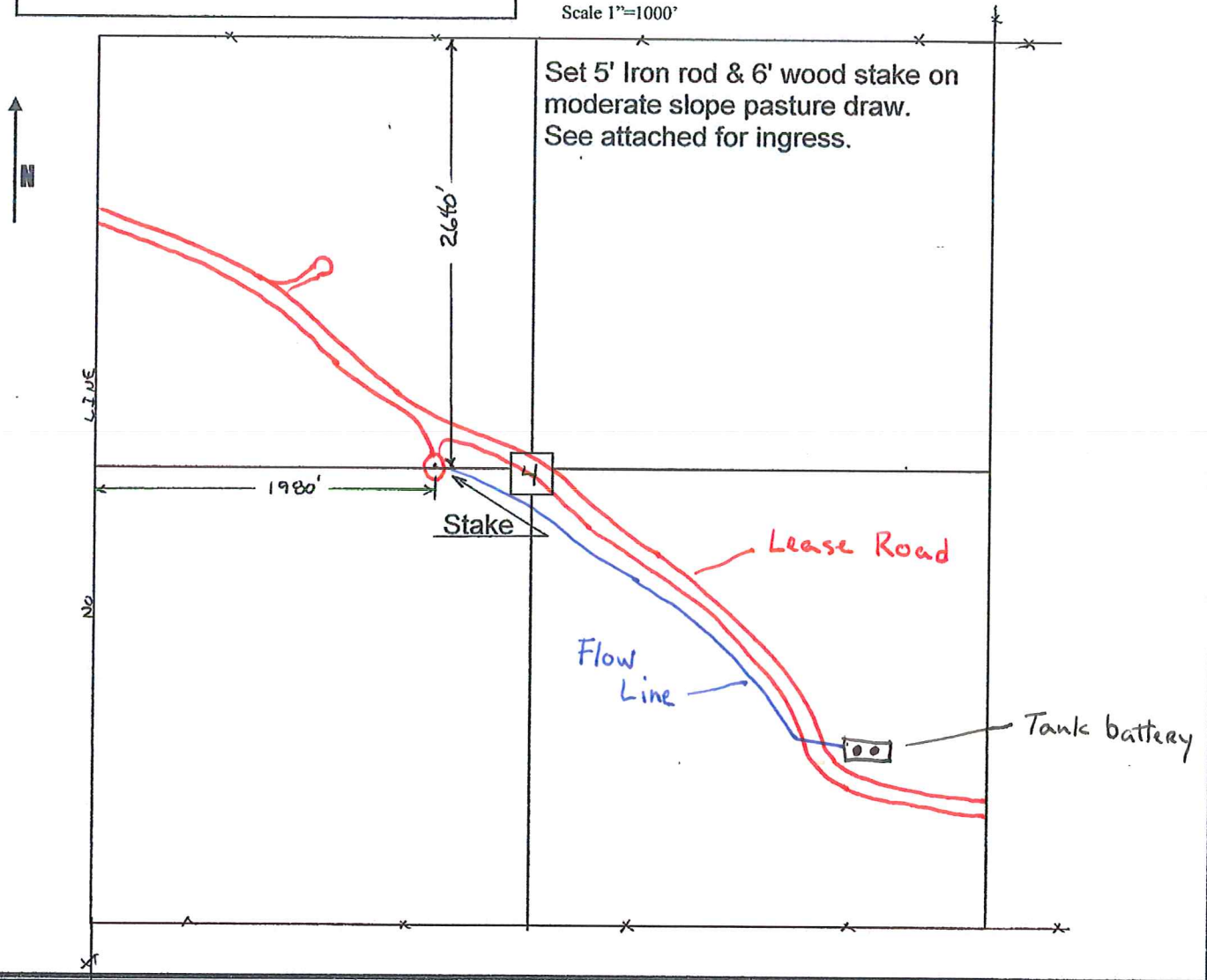
Location

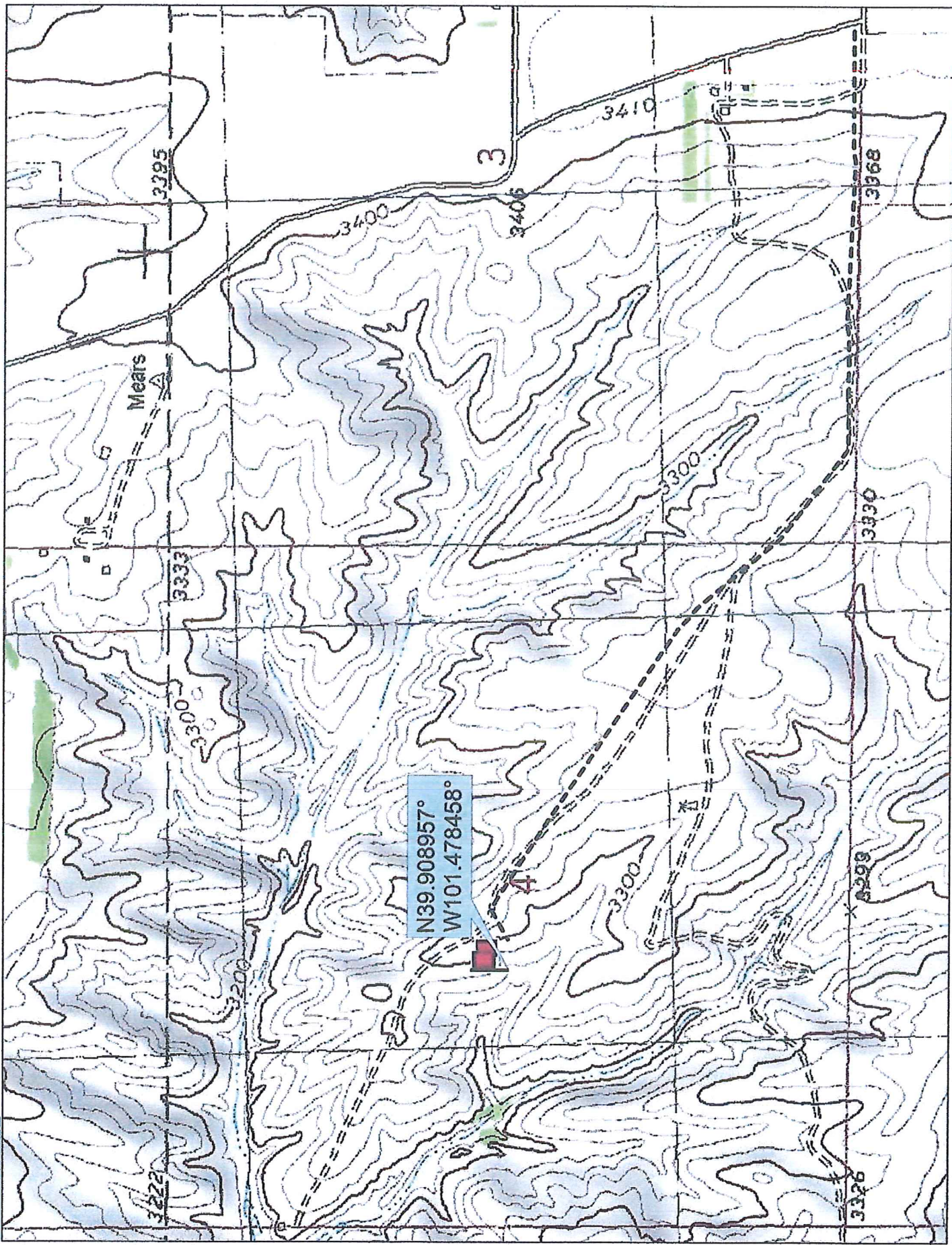
Berexco, LLC  
2020 N Bramblewood Dr.  
Wichita, KS. 67206

Elevation 3256 Gr.

Ordered By: Dana

Scale 1"=1000'





Data use subject to license.

© DeLorme. Topo North America™ 9.

www.delorme.com

TM

NAD (83)

Scale 1 : 12,000



1" = 1,000.0 ft

Data Zoom 13-1