



BASICSM
ENERGY SERVICES
PRESSURE PUMPING & WIRELINE

10244 NE Hwy. 61
P.O. Box 8613
Pratt, Kansas 67124
Phone 620-672-1201

TRMT-41

FIELD SERVICE TICKET
0541132111
1718 17432 A

DATE _____ TICKET NO. _____

DATE OF JOB 10-3-18	DISTRICT Pratt Kansas	NEW WELL <input checked="" type="checkbox"/>	OLD WELL <input type="checkbox"/>	PROD <input type="checkbox"/>	INJ <input type="checkbox"/>	WDW <input type="checkbox"/>	CUSTOMER ORDER NO.
CUSTOMER Prolific Resources LLC		LEASE Fisher				WELL NO. 1	
ADDRESS		COUNTY Pawnee	STATE Kansas				
CITY STATE		SERVICE CREW Fennis, Miller, Jose					
AUTHORIZED BY		JOB TYPE: 4.625 Surface casing 2-42					
EQUIPMENT#	HRS	EQUIPMENT#	HRS	EQUIPMENT#	HRS	TRUCK CALLED	DATE 10-3-18 TIME 0200
86779	4					ARRIVED AT JOB	10-3-18 0300
73768	4					START OPERATION	1000
						FINISH OPERATION	1400
						RELEASED	1430
						MILES FROM STATION TO WELL	60

CONTRACT CONDITIONS: (This contract must be signed before the job is commenced or merchandise is delivered).

The undersigned is authorized to execute this contract as an agent of the customer. As such, the undersigned agrees and acknowledges that this contract for services, materials, products, and/or supplies includes all of and only those terms and conditions appearing on the front and back of this document. No additional or substitute terms and/or conditions shall become a part of this contract without the written consent of an officer of Basic Energy Services LP.

SIGNED: (WELL OWNER, OPERATOR, CONTRACTOR OR AGENT)

ITEM/PRICE REF. NO.	MATERIAL, EQUIPMENT AND SERVICES USED	UNIT	QUANTITY	UNIT PRICE	\$ AMOUNT
CP101	Acon Blend Common	SK	200		3600 00
CP100C	Common Cement	SK	200		3200 00
CC102	Cello Flake	lb	101		373 70
CC109	Calcium Chloride	lb	940		987 00
CF105	TOP Rubber cement Plug 8 5/8	EA	1		225 00
CF1753	Baffle Plate aluminum 8 5/8 (Blue)	EA	1		170 00
CF1753	Centrainers 8 5/8 (Blue)	EA	2		180 00
B100	Pickup mileage	M	60		270 00
B101	Heavy equipment mileage	M	120		900 00
B113	Bulk delivery charge per ton mile	Ton/M	1128		2820 00
CE202	Depth charge 100' - 200'	4hr	1		1500 00
CE240	Blending & mixing service charge	SK	400		360 00
CE504	Pump container utilization charge	Job	1		250 00
SO03	Service supervisor first 4 hrs on location	EA	1		175 00
SUB TOTAL					15210 20

CHEMICAL / ACID DATA:			

SERVICE & EQUIPMENT	%TAX ON \$	
MATERIALS	%TAX ON \$	
TOTAL		9278 53

SERVICE REPRESENTATIVE:

THE ABOVE MATERIAL AND SERVICE ORDERED BY CUSTOMER AND RECEIVED BY:

(WELL OWNER OPERATOR CONTRACTOR OR AGENT)

FIELD SERVICE ORDER NO.

Customer <i>Prolific Resources</i>	Lease No.	Date <i>10-13-16</i>
Lease <i>Fisher</i>	Well # <i>1</i>	
Field Order # <i>17432</i>	Station <i>Pratt Kansas 1716</i>	Casing <i>8.625</i>
		Depth <i>1106</i>
Type Job <i>8.625 surface 2-42</i>	Formation	County <i>Pawnee</i>
		State <i>KS</i>
		Legal Description <i>12-725-15W</i>

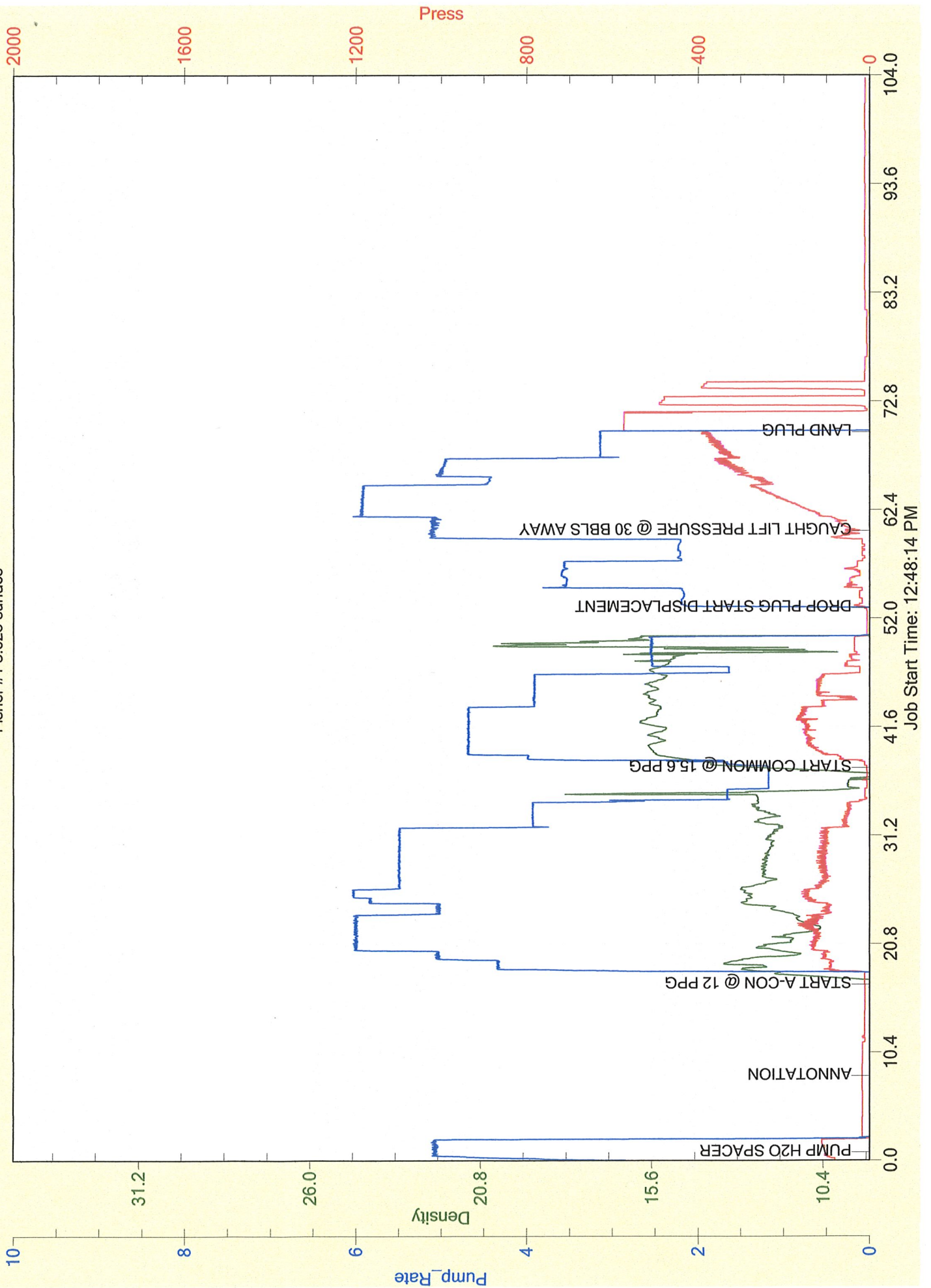
PIPE DATA		PERFORATING DATA		FLUID USED		TREATMENT RESUME		
Casing Size	Tubing Size	Shots/Ft		Acid	RATE	PRESS	ISIP	
<i>8.625</i>								
Depth <i>1106</i>	Depth	From	To	Pre Pad	Max		5 Min.	
Volume <i>70.4</i>	Volume	From	To	Pad	Min		10 Min.	
Max Press <i>1006</i>	Max Press	From	To	Frac	Avg		15 Min.	
Well Connection <i>6CD</i>	Annulus Vol.	From	To		HHP Used		Annulus Pressure	
Plug Depth	Packer Depth	From	To	Flush	Gas Volume		Total Load	

Customer Representative	Station Manager	Treater
-------------------------	-----------------	---------

Service Units	<i>76666</i>	<i>77666</i>	<i>46220</i>	<i>19960</i>	<i>73766</i>				
Driver Names	<i>Fennis</i>	<i>mike</i>	<i>mike</i>	<i>505L</i>	<i>505L</i>				

Time	Casing Pressure	Tubing Pressure	Bbls. Pumped	Rate	Service Log
<i>0300</i>					<i>Arrived on location / safety meeting</i>
<i>0800</i>					<i>Rig up equipment</i>
<i>1000</i>					<i>Install Baffle - 3T-1 centralizers 3T-10, 24</i>
					<i>1106' 8.625 ran - 42.26' shoe track</i>
<i>1245</i>	<i>110</i>		<i>10</i>	<i>5</i>	<i>Pump H2O spacer</i>
<i>1305</i>	<i>140</i>			<i>6</i>	<i>Start mixing Acids @ 12 ppg</i>
<i>1311</i>	<i>160</i>		<i>44</i>	<i>6</i>	<i>100th A-con away @ 12 ppg</i>
<i>1319</i>	<i>160</i>		<i>66</i>	<i>5</i>	<i>200th A-con away start common @ 15.6 ppg</i>
<i>1326</i>	<i>170</i>		<i>21</i>	<i>5</i>	<i>100th common away @ 15.6 ppg</i>
<i>1334</i>	<i>180</i>		<i>43</i>		<i>200th common away @ 15.6 ppg 5/0 0/P</i>
<i>1339</i>	<i>60</i>			<i>4</i>	<i>Start H2O displacement</i>
<i>1348</i>	<i>250</i>		<i>30</i>	<i>5</i>	<i>caught lift pressure.</i>
<i>1350</i>	<i>270</i>		<i>40</i>	<i>5</i>	<i>Saw cement @ surface</i>
<i>1353</i>	<i>320</i>		<i>56</i>	<i>3</i>	<i>Slow to land plug</i>
<i>1356</i>	<i>510</i>		<i>68</i>	<i>3</i>	<i>land plug shut in (dead) lost circ 330psi</i>
<i>1430</i>					<i>Rig down, leave location</i>
					<i>Hot - 557.82' TOT - 550.18'</i>
					<i>Hot - 550.18' TOT - surface</i>
					<i>2800 lbs cement to pit</i>
					<i>Thank you!! Fennis Cordus</i>

Prolific Resources
Fisher #1 8.625 surface





BASICSM
ENERGY SERVICES
PRESSURE PUMPING & WIRELINE

10244 NE Hwy. 61
P.O. Box 8613
Pratt, Kansas 67124
Phone 620-672-1201

TMT-20

FIELD SERVICE TICKET
1718 17437 A

DATE _____ TICKET NO. _____

DATE OF JOB: 10-19-16	DISTRICT: Pratt Kansas 1716	NEW WELL <input checked="" type="checkbox"/>	OLD WELL <input type="checkbox"/>	PROD <input type="checkbox"/>	INJ <input type="checkbox"/>	WDW <input type="checkbox"/>	CUSTOMER ORDER NO.:	
CUSTOMER: Prolific Resources LLC		LEASE: Fisher		WELL NO.:				
ADDRESS:		COUNTY: Pawnee		STATE: Kansas				
CITY:		STATE:		SERVICE CREW: Fennis, Mike, Jose				
AUTHORIZED BY:		JOB TYPE: S.S Production						
EQUIPMENT#	HRS	EQUIPMENT#	HRS	EQUIPMENT#	HRS	TRUCK CALLED	DATE: 10-19-16	TIME: 1000
56779	5					ARRIVED AT JOB	AM 1300	
21010	5					START OPERATION	AM 1400	
						FINISH OPERATION	AM 1900	
						RELEASED	AM 2000	
						MILES FROM STATION TO WELL	60	

CONTRACT CONDITIONS: (This contract must be signed before the job is commenced or merchandise is delivered).

The undersigned is authorized to execute this contract as an agent of the customer. As such, the undersigned agrees and acknowledges that this contract for services, materials, products, and/or supplies includes all of and only those terms and conditions appearing on the front and back of this document. No additional or substitute terms and/or conditions shall become a part of this contract without the written consent of an officer of Basic Energy Services LP.

SIGNED: *[Signature]*
(WELL OWNER, OPERATOR, CONTRACTOR OR AGENT)

ITEM/PRICE REF. NO.	MATERIAL, EQUIPMENT AND SERVICES USED	UNIT	QUANTITY	UNIT PRICE	\$ AMOUNT
CP105	AA2 cement	SK	200		3400 00
CP103	60/40 P02	SK	50		600 00
CL102	CelloFlake	lb	50		145 00
CC105	C-4/P	lb	94		376 00
CC111	Salt	lb	964		482 00
CC112	Cement Friction Reducer	lb	57		312 00
CC149	Maxchem 1000	lb	564		1522 80
CC148	C-17	lb	94		1480 00
CC201	Gilsonite	lb	946		667 32
CC200	Cement (cel)	lb	86		21 50
CF1251	5 1/2 Auto Fill Float shoe (Blue)	EA	1		360 00
CF607	5 1/2 Latchdown Plug + Base (Blue)	EA	1		2100 00
CF1901	5 1/2 Basket (Blue)	EA	1		290 00
CF1651	5 1/2 Turbolizer (Blue)	EA	10		1100 00
CF2002	Cement scratchers Rotating type	EA	30		1500 00
CC151	Mud Flush	Gal	500		750 00
C704	Claymax KCL substitute	Gal	5		175 00
E100	Pickup mileage	mi	60		270 00
E101	Heavy equipment mileage	mi	120		400 00
SUB TOTAL					20449 12

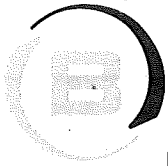
CHEMICAL / ACID DATA:			

SERVICE & EQUIPMENT	%TAX ON \$	
MATERIALS	%TAX ON \$	
TOTAL		12415 76

Discounted *GLS*

SERVICE REPRESENTATIVE: <i>[Signature]</i>	THE ABOVE MATERIAL AND SERVICE ORDERED BY CUSTOMER AND RECEIVED BY: <i>[Signature]</i> (WELL OWNER OPERATOR CONTRACTOR OR AGENT)
--	---

FIELD SERVICE ORDER NO. _____



BASICSM
ENERGY SERVICES
PRESSURE PUMPING & WIRELINE

10244 NE Hwy. 61
P.O. Box 8613
Pratt, Kansas 67124
Phone 620-672-1201

FIELD SERVICE TICKET

1718 ~~17438~~ A
17437 continued

DATE _____ TICKET NO. _____

DATE OF JOB: 10-19-18		DISTRICT		NEW WELL <input type="checkbox"/> OLD WELL <input type="checkbox"/> PROD <input type="checkbox"/> INJ <input type="checkbox"/> WDW <input type="checkbox"/> CUSTOMER ORDER NO.:				
CUSTOMER: Prolific Resources		LEASE: Fisher		WELL NO.: 1				
ADDRESS		COUNTY: Pawnee		STATE: KS				
CITY		STATE		SERVICE CREW: Fennis, Mike, Jose				
AUTHORIZED BY		JOB TYPE: 5.5 Production Casing Z-42						
EQUIPMENT#	HRS	EQUIPMENT#	HRS	EQUIPMENT#	HRS	TRUCK CALLED	DATE	TIME
816779							10-19-18	1000
2101D								
						ARRIVED AT JOB		1300
						START OPERATION		1400
						FINISH OPERATION		
						RELEASED		
						MILES FROM STATION TO WELL		

CONTRACT CONDITIONS: (This contract must be signed before the job is commenced or merchandise is delivered).

The undersigned is authorized to execute this contract as an agent of the customer. As such, the undersigned agrees and acknowledges that this contract for services, materials, products, and/or supplies includes all of and only those terms and conditions appearing on the front and back of this document. No additional or substitute terms and/or conditions shall become a part of this contract without the written consent of an officer of Basic Energy Services LP.

SIGNED:
(WELL OWNER, OPERATOR, CONTRACTOR OR AGENT)

ITEM/PRICE REF. NO.	MATERIAL, EQUIPMENT AND SERVICES USED	UNIT	QUANTITY	UNIT PRICE	\$ AMOUNT	
K113	Bulk delivery charge per ton mile	cu in	643		1732 50	
CE 205	Depth charge 4001'-5000'	Yr	1		2626 00	
CE 240	Blending & mixing service charge	SK	250		350 00	
CE 504	Pipe container utilization charge	Job	1		250 00	
CE 501	Casing service rental	EA	1		200 00	
5003	Service supervisor first 8 hrs on Locam	EA	1		175 00	
					SUB TOTAL	20449 12

CHEMICAL / ACID DATA:			

SERVICE & EQUIPMENT	%TAX ON \$	
MATERIALS	%TAX ON \$	
TOTAL		12473 96

Discount
DLS

SERVICE REPRESENTATIVE	THE ABOVE MATERIAL AND SERVICE ORDERED BY CUSTOMER AND RECEIVED BY:
FIELD SERVICE ORDER NO.	(WELL OWNER OPERATOR CONTRACTOR OR AGENT)

Customer <i>Prolific Resources LLC</i>	Lease No.	Date <i>10-14-16</i>			
Lease <i>Fisher</i>	Well # <i>1</i>				
Field Order # <i>17437</i>	Station <i>Pratt Kansas</i>	Casing <i>5.5</i>	Depth <i>4299.69'</i>	County <i>Pawnee</i>	State <i>KS</i>
Type Job <i>5.5 Production casing 2-42</i>	Formation	Legal Description <i>12-225-16W</i>			

PIPE DATA		PERFORATING DATA		FLUID USED		TREATMENT RESUME		
Casing Size	Tubing Size	Shots/Ft		Acid		RATE	PRESS	ISIP
<i>5.5</i>								
Depth <i>4299.69'</i>	Depth	From	To	Pre Pad		Max		5 Min.
Volume <i>102.3</i>	Volume	From	To	Pad		Min		10 Min.
Max Press <i>3000</i>	Max Press	From	To	Frac		Avg		15 Min.
Well Connection <i>502</i>	Annulus Vol.	From	To			HHP Used		Annulus Pressure
Plug Depth	Packer Depth	From	To	Flush		Gas Volume		Total Load

Customer Representative <i>Jeff Burk</i>	Station Manager <i>Justin Westerman</i>	Treater <i>Franis Cordato</i>
--	---	-------------------------------

Service Units	<i>76866</i>	<i>77646</i>	<i>46779</i>	<i>19459</i>	<i>2100</i>				
Driver Names	<i>Franis</i>	<i>Mike</i>	<i>Mike</i>	<i>Jose</i>	<i>Jose</i>				

Time	Casing Pressure	Tubing Pressure	Bbls. Pumped	Rate	Service Log
<i>1300</i>					<i>Arrived on location/safety meeting</i>
<i>1330</i>					<i>Rig up equipment</i>
					<i>Total Pipe - 4299.69' shoe track - 11.75'</i>
<i>1400</i>					<i>Basket installed st 3 Turbolizer, installed</i>
					<i>3TS-1,3,4,6,7,10,13,15,18,21</i>
<i>1630</i>	<i>500</i>				<i>Drop Ball/Blow Seat</i>
<i>1740</i>	<i>340</i>		<i>20</i>	<i>5</i>	<i>Pump H2O spacer with 2% KCl</i>
<i>1744</i>	<i>340</i>		<i>12</i>	<i>5</i>	<i>Pump mud flush</i>
<i>1746</i>	<i>380</i>		<i>5</i>	<i>5</i>	<i>Pump H2O spacer</i>
<i>1750</i>	<i>310</i>			<i>4</i>	<i>Start AA2 cement @ 15 ppr</i>
<i>1757</i>	<i>140</i>		<i>25.5</i>	<i>4</i>	<i>100^{5x} AA2 cement away @ 15 ppr</i>
<i>1803</i>	<i>140</i>		<i>51</i>	<i>4</i>	<i>200^{5x} AA2 cement away @ 15 ppr / D work</i>
<i>1813</i>	<i>80</i>			<i>5</i>	<i>Start H2O Displacement 2% KCl</i>
<i>1826</i>	<i>310</i>		<i>66</i>	<i>5</i>	<i>Saw lift pressure</i>
<i>1827</i>	<i>1500</i>		<i>67</i>	<i>5</i>	<i>Pressure shot up come off line</i>
<i>1828</i>	<i>1900</i>		<i>67</i>	<i>1</i>	<i>come on line Pressure come up/down</i>
<i>1857</i>	<i>1600</i>		<i>102</i>	<i>1.3</i>	<i>Land plug</i>
<i>19:00</i>					<i>check floats, float held, .5 BOLS back,</i>
<i>19:05</i>					<i>plug rat hole 30^{5x} 60/40 13.8 ppr mouse hole 20^{5x} 13.8 ppr</i>
<i>20:00</i>					<i>Rig down leave location</i>
	<i>HOC</i>	<i>1650.48'</i>	<i>TOC -</i>	<i>2650.52'</i>	<i>Fully Pressure Lost 35 gals Displacement</i>
					<i>Pressure up/down 1300-1000 psi</i>

Prolific Resources Ilc

Fisher #1 5.5 production

