



**TRILOBITE
TESTING, INC.**

DRILL STEM TEST REPORT

K3 Oil and Gas Operating, Co.
24900 Pitkin Road
Suite 305
The Woodlands, TX 77386
ATTN: John Rigas/Randy Say

12/33S/1E/ Sumner, KS

Blocker #16-12

Job Ticket: 63927

DST#: 1

Test Start: 2018.11.26 @ 11:49:00

GENERAL INFORMATION:

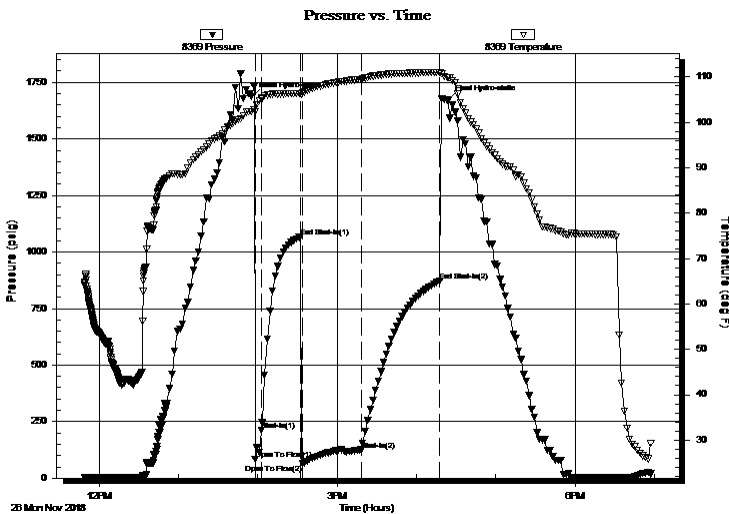
Formation: **Mississippian**
 Deviated: No Whipstock: ft (KB)
 Time Tool Opened: 13:58:00
 Time Test Ended: 18:57:20
 Interval: **3420.00 ft (KB) To 3475.00 ft (KB) (TVD)**
 Total Depth: 3475.00 ft (KB) (TVD)
 Hole Diameter: 7.88 inches Hole Condition: Poor
 Test Type: Conventional Bottom Hole (Initial)
 Tester: Jimmy Ricketts
 Unit No: 80
 Reference Elevations: 1142.00 ft (KB)
 1136.00 ft (CF)
 KB to GR/CF: 6.00 ft

Serial #: 8369

Outside

Press@RunDepth: 124.79 psig @ 3421.00 ft (KB) Capacity: 8000.00 psig
 Start Date: 2018.11.26 End Date: 2018.11.26 Last Calib.: 1899.12.30
 Start Time: 11:49:01 End Time: 18:57:20 Time On Btm: 2018.11.26 @ 13:55:30
 Time Off Btm: 2018.11.26 @ 16:24:00

TEST COMMENT: IF - Weak blow building to strong blow 2 minutes into initial flow period. Continued to build to 34 inches.
 FF - Strong blow throughout final flow period. Gas to surface 35 minutes into final flow period.



PRESSURE SUMMARY

Time (Min.)	Pressure (psig)	Temp (deg F)	Annotation
0	1685.94	102.38	Initial Hydro-static
3	82.38	102.30	Open To Flow (1)
8	211.30	105.13	Shut-In(1)
37	1066.42	106.39	End Shut-In(1)
39	62.98	106.41	Open To Flow (2)
83	124.79	109.43	Shut-In(2)
143	871.02	110.99	End Shut-In(2)
149	1672.16	109.91	Final Hydro-static

Recovery

Length (ft)	Description	Volume (bbl)
175.00	W O & M cut G 46%G 25%O 5%W & 24%1.39	
60.00	Heavy O & M cut G 39%G 29%O & 33%10.84	
60.00	Oil cut mud 1% O & 99% M	0.84

Gas Rates

	Choke (inches)	Pressure (psig)	Gas Rate (Mcf/d)
First Gas Rate	0.13	1.00	5.76



**TRILOBITE
TESTING, INC.**

DRILL STEM TEST REPORT

FLUID SUMMARY

K3 Oil and Gas Operating, Co.

12/33S/1E/ Sumner, KS

24900 Pitkin Road
Suite 305
The Woodlands, TX 77386
ATTN: John Rigas/Randy Say

Blocker #16-12

Job Ticket: 63927

DST#: 1

Test Start: 2018.11.26 @ 11:49:00

Mud and Cushion Information

Mud Type: Gel Chem
Mud Weight: 10.00 lb/gal
Viscosity: 55.00 sec/qt
Water Loss: 8.79 in³
Resistivity: ohm.m
Salinity: 4000.00 ppm
Filter Cake: inches

Cushion Type:
Cushion Length: ft
Cushion Volume: bbl
Gas Cushion Type:
Gas Cushion Pressure: psig

Oil API: deg API
Water Salinity: ppm

Recovery Information

Recovery Table

Length ft	Description	Volume bbl
175.00	W O & M cut G 46%G 25%O 5%W & 24%M	1.389
60.00	Heavy O & M cut G 39%G 29%O & 33% M	0.842
60.00	Oil cut mud 1% O & 99% M	0.842

Total Length: 295.00 ft Total Volume: 3.073 bbl

Num Fluid Samples: 0

Num Gas Bombs: 0

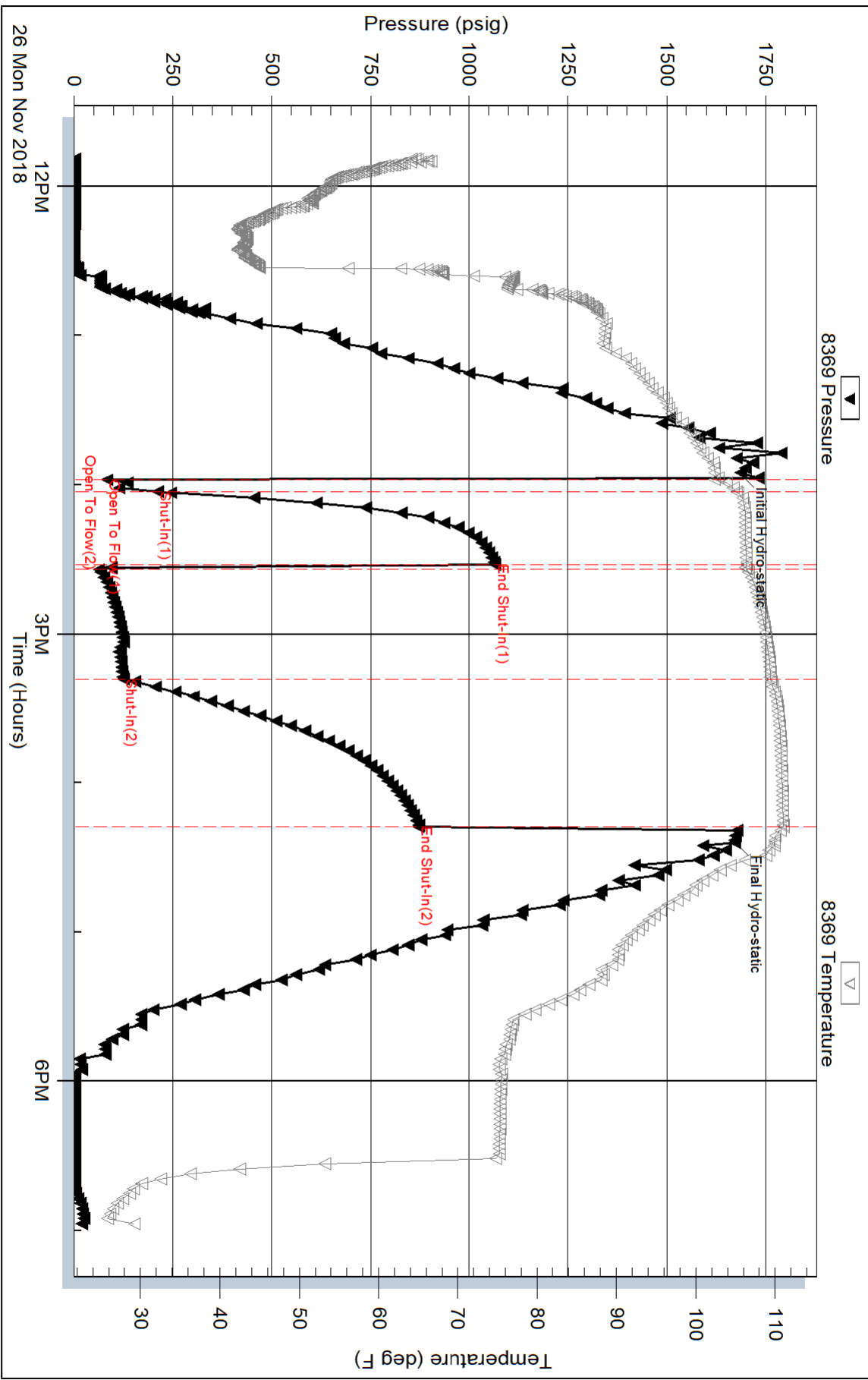
Serial #:

Laboratory Name:

Laboratory Location:

Recovery Comments:

Pressure vs. Time



Serial #: 8846

Inside

K3 Oil and Gas Operating, Co.

Blocker #16-12

DST Test Number: 1

