



Woolsey Operating Company, LLC

Scale 1:240 (5"=100') Imperial
Measured Depth Log

Well Name: **McELWAIN #1**
 API: **15-097-21849-00-00**
 Location: **Section 20 - Township 28 South - Range 19 West**
 License Number: **33168** **February 4, 2019** **Drilling Completed: February 12, 2019**
 Spud Date: **1150' FNL & 1800' FEL**
 Surface Coordinates: **SE NW NE**
 Bottom Hole Coordinates: **2288'** **K.B. Elevation (ft): 2300'**
 Ground Elevation (ft): **3800'** **Top: 5022'** **Total Depth (ft): 5022'**
 Logged Interval (ft): **Shawnee >>> Mississippian**
 Formation: **Chemical Mud Displaced at 3080'**
 Type of Drilling Fluid: **Printed by MUDLOG from WellSight Systems 1-800-447-1534 www.WellSight.com**

OPERATOR

Company: **Woolsey Operating Company, LLC**
 Address: **125 N. Market, Suite 1000, Wichita, KS 67202**

GEOLOGIST

Name: **Bill Klaver**
 Company: **Woolsey Operating Co. LLC**
 Address: **125 N. Market, Wichita Kansas, 67202**

COMMENTS

Surface Casing: Spud at 8:45 am on January 4th, 2019. Set 9 joints of 10 3/4" X 32.75#/ft new surface casing at 395' KB (tally 380.3) w/ 325 sx 60/40 poz mix (by Basic). Plug down at 9:15 on January 4th, 2019. Cement did circulate.
 Production Casing:
 Deviation Surveys: 1 at 397', 1 at 1000', 3/4 at 1539', 3/4 at 2011', 1/2 at 2498', 1 at 3027', 3/4 at 3564', 1/2 at 4005', 1 at 4544', 1 1/4 at 4488', 1 at 5022'.
 Pipe Strap @ 4924'. Board: 4926.58', Strap: 4931.77', Strap 5.9' long. No correction was made to the board.
 Fossil Rig 3 Bit Record:
 1) 14 3/4" Varel RR in at 0' out at 397', 7 1/4 hours
 2) 7 7/8" Hughes Tool Co. in at 397', out at 4950', 72 hrs
 3) 7 7/8" Varel HE-21 RR in at 4950', out at 5022', 4 hrs

Gas Detector: Pason Systems
 Mud System: Mud-Co, Brad Bortz, Engineer
 DSTs: Tribble Testing, Benny Mulligan, Tester
 E-Logs: ELI, Dual Induction Laterolog w/SPN, CFI-FDC w/PE GR & Calliper, Sonic w/GR, Jason Cappelucci, Engineer

DSTs

DST #1 Cherokee, 4842'-4888', 30"-60"-60"-60", Strong 17" blow on IFP, good 15" blow on FFP, Rec: 75' SOGCMW (5%G, 35%W, 60%M), 180' GCMW (5%G, 70%W, 25%M), 120' GCMW (5%G, 90%W, 5%M), chlorides 28,000 ppm, IHP 2527, FFP 44-172, ICIP 789, FFP 149-209, FCIP 579, FHP 2483, BHT 123 degrees
 DST #2 Mississippi, 4876'-4924', 30"-60"-30"-90", SB GTs 1", IFP: 20" 30" 3.86 MMCF, FFP: 10" 3.43 MMCF, 15"-30" 3.86 MMCF, Rec: 70' SWCM (10%W, 90%M), IHP 2529, FFP 327-428, ICIP 1468, FFP 429-429, FCIP 1470, FHP 2456, BHT 112 degrees
 DST #3 Mississippi, 4928'-4950', 30"-60"-30"-60", weak 2 1/2" blow died. Rec: 130' MW (70%W, 30%M), IHP 2557, IFP 19-51, ICIP 1393, FFP 57-78, FCIP 1352, FHP 2446, BHT 118 degrees

CREWS

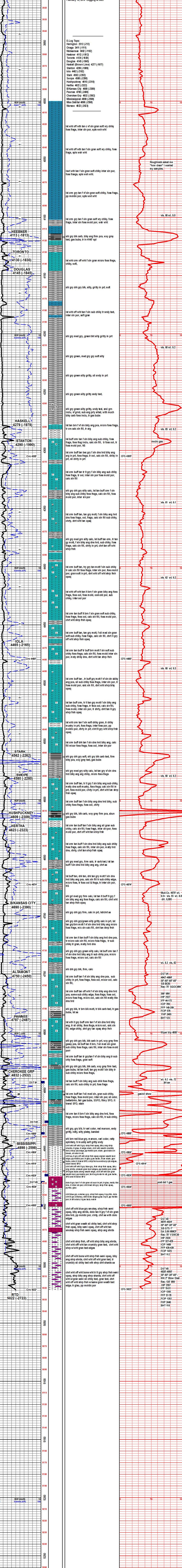
Rick Barriger, Jason Barriger Tool Pushers
 Tyler Tresner, Morning
 Pablo Luna, Days
 Chris Statts, Evening

ROCK TYPES

Anhy	Dol	Siltst	Shale 3
Bent	Sh	Ss	Silty dol
Brec	Gyp	Black sh	Dol lmst
Cht	Sdy limst	Gry sh	Dol 2
Clyst	Lmst	Shale	Granite wash
Coal	Mlrst	Shysiltst	Lmst
Congly	Salt	Slysh	Calc dol
Sdy dol	Slate	Ss 2	Shale 3

ACCESSORIES

MINERAL	FOSSIL	STRINGER	TEXTURE
Anhy, Arg, Bent, Brefrac, Calc, Carb, Chitdk, Chitl, Dol, Ferrpel, Glau, Gyp, Marl, Nodule, Phos, Pyr, Salt, Sandy, Silt	Chlorite, Dol, Sand, Sily, Algae, Amph, Belm, Bioclet, Brach, Bryozoa, Cephal, Coral, Crin, Echin, Fish, Foram, Gastro, Oolite, Ostra	Any, Arg, Bent, Coal, Dol, Gyp, Ls, Mlrst, Siltstrg, Carbstn, Cylstrn, Dol	Grysh, Gryst, Lms, Sandylms, Sh, Siltstn, Boundst, Chalky, Cryxln, Earthy, Finexin, Grainst, Lithogr, Microxln, Mudst, Packet, Wackest



OPERATOR

Company: **Woolsey Operating Company, LLC**
 Address: **125 N. Market, Suite 1000, Wichita, KS 67202**

GEOLOGIST

Name: **Bill Klaver**
 Company: **Woolsey Operating Co. LLC**
 Address: **125 N. Market, Wichita Kansas, 67202**