

KANSAS CORPORATION COMMISSION
OIL & GAS CONSERVATION DIVISION

Form must be Typed
Form must be signed

TEMPORARY ABANDONMENT WELL APPLICATION

All blanks must be complete

OPERATOR: License#
Name:
Address 1:
Address 2:
City: State: Zip:
Contact Person:
Phone:
Contact Person Email:
Field Contact Person:
Field Contact Person Phone:

API No. 15-
Spot Description:
Sec. Twp. S. R.
GPS Location: Lat: Long:
Datum: NAD27 NAD83 WGS84
County: Elevation:
Lease Name: Well #:
Well Type: Oil Gas OG WSW Other:
SWD Permit #: ENHR Permit #:
Gas Storage Permit #:
Spud Date: Date Shut-In:

Table with 7 columns: Conductor, Surface, Production, Intermediate, Liner, Tubing. Rows include Size, Setting Depth, Amount of Cement, Top of Cement, Bottom of Cement.

Casing Fluid Level from Surface: How Determined? Date:
Casing Squeeze(s): to w / sacks of cement, to w / sacks of cement. Date:
Do you have a valid Oil & Gas Lease? Yes No
Depth and Type: Junk in Hole at Tools in Hole at Casing Leaks: Yes No Depth of casing leak(s):
Type Completion: ALT. I ALT. II Depth of: DV Tool: w / sacks of cement Port Collar: w / sack of cement
Packer Type: Size: Inch Set at: Feet
Total Depth: Plug Back Depth: Plug Back Method:

Geological Date:

Table with 4 columns: Formation Name, Formation Top, Formation Base, Completion Information. Rows 1 and 2.

UNDER PENALTY OF PERJURY I HEREBY ATTEST THAT THE INFORMATION CONTAINED HEREIN IS TRUE AND CORRECT TO THE BEST OF MY KNOWLEDGE

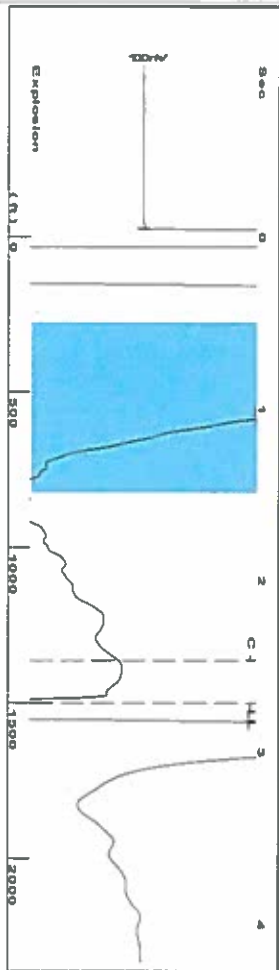
Submitted Electronically

Do NOT Write in This Space - KCC USE ONLY
Date Tested: Results: Date Plugged: Date Repaired: Date Put Back in Service:
Review Completed by: Comments:
TA Approved: Yes Denied Date:

Mail to the Appropriate KCC Conservation Office:

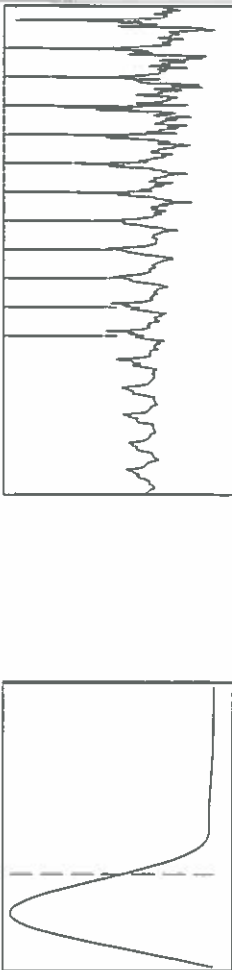
Table with 3 columns: District Office, Address, Phone. Rows for District Office #1, #2, #3, #4.

Group: Garden City Rt 6 Well: Yunker #3-14 (acquired on: 03/07/19 11:34:58)



Filter Type High Pass Automatic Collar Count Yes Time 2716 sec
 Manual Acoustic Velocity 1074.58 ft/s Manual JTS/sec 16.9492 Joints 47.3431 J/s
 Depth 1500.78 ft

0.5 to 1.5 (Sec)



Analysis Method: Automatic

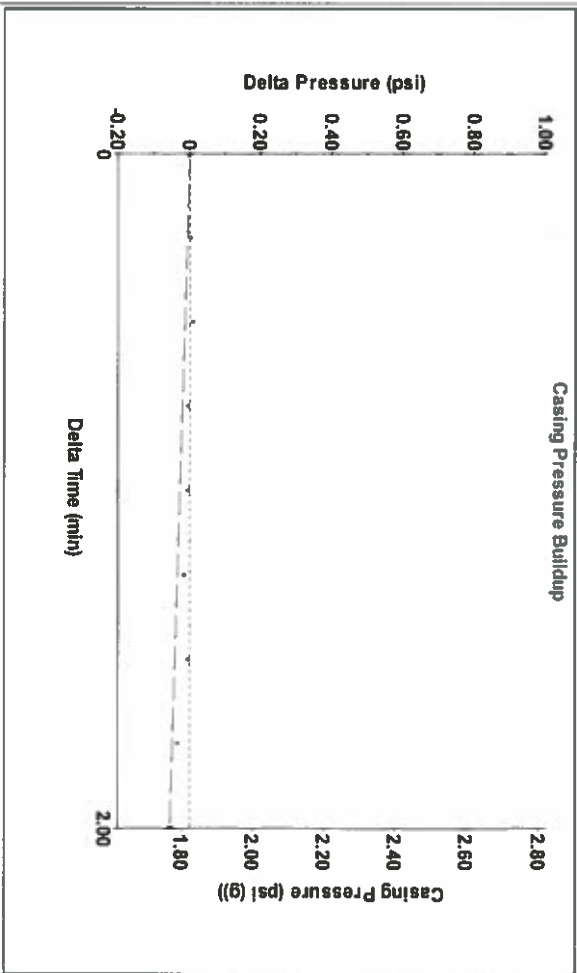
Group: Garden City Rt 6 Well: Yunker #3-14 (acquired on: 03/07/19 11:34:58)

Production	Potential	Casing Pressure	Producing
Current	BBL/D	1.8 psi (g)	Annular
Oil	BBL/D	Casing Pressure Buildup	Gas Flow
Water	Mscf/D	-0.055 psi	% Liquid
Gas	Mscf/D	2.00 min	100 %
IPR Method	Veget	Gas/Liquid Interface Pressure	Mscf/D
PBIHP/SBHP	0.0	2.6 psi (g)	
Production Efficiency		Liquid Level Depth	
		1500.78 ft	
Oil	40 deg API	Pump Intake Depth	
Water	1.05 Sp.Gr.120	5350.00 ft	
Gas	0.86 Sp.Gr.AIR	Formation Depth	
		5300.00 ft	
Acoustic Velocity	1105.14 ft/s		



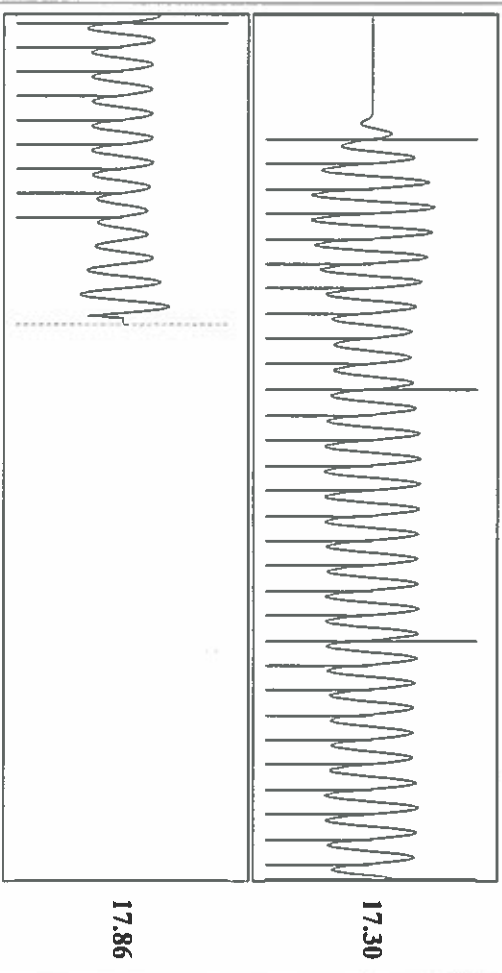
Pump Intake 1253.8 psi (g)
 Producing BHP 1238.8 psi (g)
 Static BHP 1043.7 psi (g)

Group: Garden City Rt 6 Well: Yunker #3-14 (acquired on: 03/07/19 11:34:58)



Change in Pressure -0.05 psi PT114679 Range 0 - 7 psi
 Change in Time 2.00 min

Group: Garden City Rt 6 Well: Yunker #3-14 (acquired on: 03/07/19 11:34:58)



Acoustic Velocity 1105.14 ft/s Joints counted 38
 Joints Per Second 17.4312 J/s/sec Joints to liquid level 47.3431
 Depth to liquid level 1500.78 ft Filter Width 14.9492
 Automatic Collar Count Yes Time to 1st Collar 0.288 2.468

17.86

17.30

March 19, 2019

Katherine McClurkan
Merit Energy Company, LLC
13727 Noel Road, Suite 1200
Dallas, TX 75240

Re: Temporary Abandonment
API 15-081-20207-00-01
Yuncker OWWO 3-14
NE/4 Sec.14-29S-34W
Haskell County, Kansas

Dear Katherine McClurkan:

Your application for Temporary Abandonment (TA) for the above-listed well is denied for the following reasons(s):

Shut-in Over 10 years

Pursuant to K.A.R. 82-3-111, the well must be plugged or returned to service by April 16, 2019.

If you wish to instead file an application for an exception to the 10-year limitation of K.A.R. 82-3-111, demonstrating why it is necessary to TA the well for more than 10 years, then you must file the application for an exception by April 16, 2019.

This deadline does NOT override any compliance deadline given to you in any Commission Order.

You may contact me if you have any questions.

Sincerely,
Michael Maier
KCC DISTRICT 1