

KANSAS CORPORATION COMMISSION
OIL & GAS CONSERVATION DIVISION

TEMPORARY ABANDONMENT WELL APPLICATION

OPERATOR: License#
Name:
Address 1:
Address 2:
City: State: Zip:
Contact Person:
Phone:
Contact Person Email:
Field Contact Person:
Field Contact Person Phone:

API No. 15-
Spot Description:
Sec. Twp. S. R.
GPS Location: Lat: Long:
Datum: NAD27 NAD83 WGS84
County: Elevation:
Lease Name: Well #:
Well Type: Oil Gas OG WSW Other:
SWD Permit #: ENHR Permit #:
Gas Storage Permit #:
Spud Date: Date Shut-In:

Table with 7 columns: Conductor, Surface, Production, Intermediate, Liner, Tubing. Rows include Size, Setting Depth, Amount of Cement, Top of Cement, Bottom of Cement.

Casing Fluid Level from Surface: How Determined? Date:
Casing Squeeze(s): to w / sacks of cement, to w / sacks of cement. Date:
Do you have a valid Oil & Gas Lease? Yes No
Depth and Type: Junk in Hole at Tools in Hole at Casing Leaks: Yes No Depth of casing leak(s):
Type Completion: ALT. I ALT. II Depth of: DV Tool: w / sacks of cement Port Collar: w / sack of cement
Packer Type: Size: Inch Set at: Feet
Total Depth: Plug Back Depth: Plug Back Method:

Geological Date:

Table with 4 columns: Formation Name, Formation Top, Formation Base, Completion Information. Rows 1 and 2.

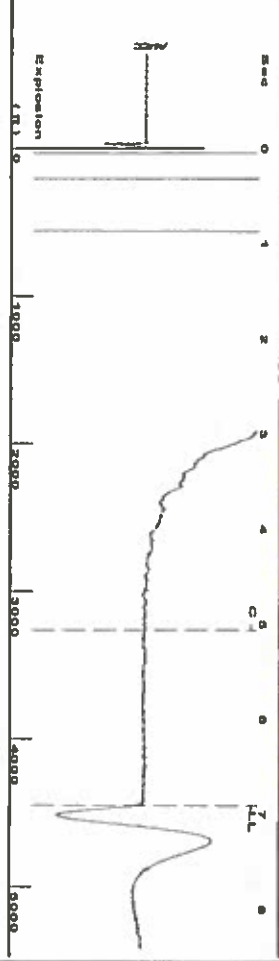
UNDER PENALTY OF PERJURY I HEREBY ATTEST THAT THE INFORMATION CONTAINED HEREIN IS TRUE AND CORRECT TO THE BEST OF MY KNOWLEDGE

Submitted Electronically

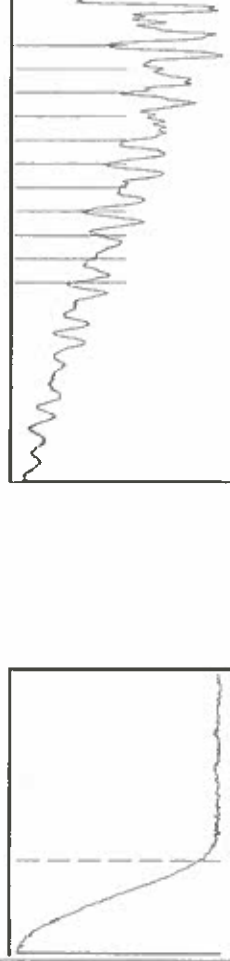
Do NOT Write in This Space - KCC USE ONLY
Date Tested: Results: Date Plugged: Date Repaired: Date Put Back in Service:
Review Completed by: Comments:
TA Approved: Yes Denied Date:

Mail to the Appropriate KCC Conservation Office:

Table with 3 columns: District Office #, Address, Phone. Rows 1-4.



Filter Type High Pass Automatic Collar Count Yes
 Manual Acoustic Velocity 1299.18 ft/s Manual JTS/sec 20.4918
 Time 6.904 sec
 Joints 140.377 Jis
 Depth 4449.95 ft



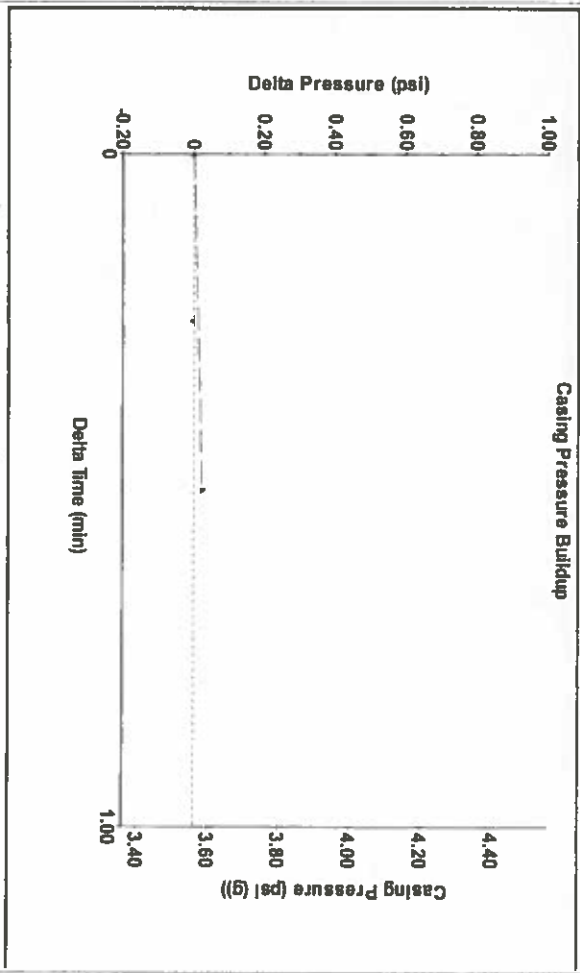
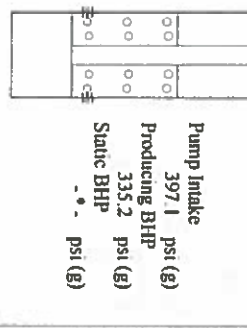
Analysis Method: Automatic

Production	Potential	Casing Pressure	Producing
Oil -*- BBL/D	Oil -*- BBL/D	3.6 psi (g)	Annular
Water -*- BBL/D	Water -*- BBL/D	Casing Pressure Buildup	Gas Flow
Gas -*- MascTD	Gas -*- MascTD	0.024 psi	% Liquid
		0.50 min	91 %
IPR Method	Vogel	Gas/Liquid Interface Pressure	2 MascTD
PBHP/SBHP	-*-	5.6 psi (g)	
Production Efficiency	0.0		
Oil 40 deg API		Liquid Level Depth	
Water 1.05 Sp.Gr.H2O		4449.95 ft	
Gas 0.71 Sp.Gr.AIR		Pump Intake Depth	
		5710.00 ft	
Acoustic Velocity		Formation Depth	
		5522.00 ft	

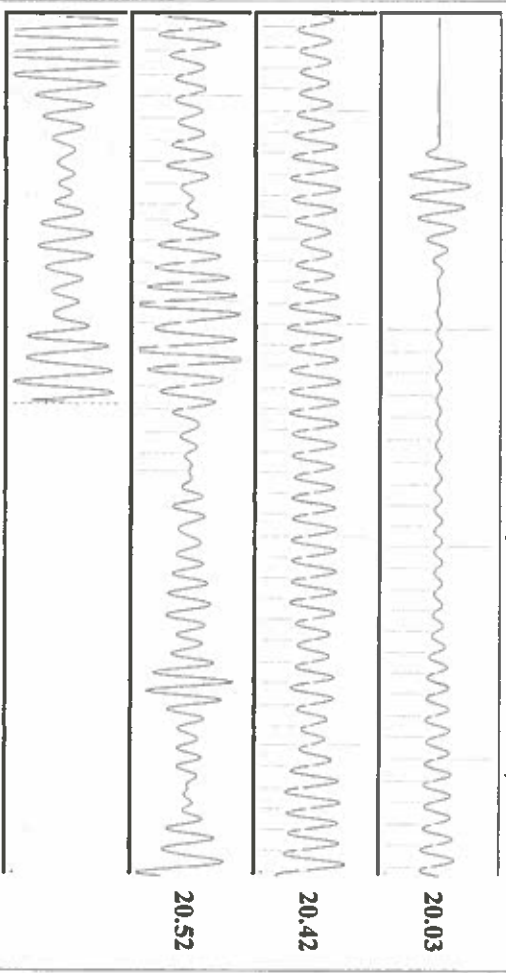
Formation Submergence 1260 ft
 Total Gaseous Liquid Column HT (TVVD) 1168 ft
 Equivalent Gas Free Liquid HT (TVVD)

Acoustic Test

Tim Frydenhall-Fluid Level Technician



Change in Pressure 0.02 psi
 Change in Time 0.50 min
 PT9522 Range
 0 - 7 psi



Acoustic Velocity	1289.09 ft/s	Joints counted	88
Joints Per Second	20.3327 Jis/Sec	Joints to liquid level	140.377
Depth to liquid level	4449.95 ft	Filler Width	18.4918
Automatic Collar Count	Yes	Time to 1st Collar	0.732

Conservation Division
District Office No. 1
210 E. Frontview, Suite A
Dodge City, KS 67801



Phone: 620-682-7933
<http://kcc.ks.gov/>

Dwight D. Keen, Chair
Shari Feist Albrecht, Commissioner
Jay Scott Emler, Commissioner

Laura Kelly, Governor

April 30, 2019

Katherine McClurkan
Merit Energy Company, LLC
13727 Noel Road, Suite 1200
Dallas, TX 75240

Re: Temporary Abandonment
API 15-187-21102-00-00
KU 9-P20-29-39
SE/4 Sec.20-29S-39W
Stanton County, Kansas

Dear Katherine McClurkan:

"Your temporary abandonment (TA) application for the well listed above has been approved. In accordance with K.A.R. 82-3-111 the TA status of this well will expire 04/30/2020.

- * If you return this well to service or plug it, please notify the District Office.
- * If you sell this well you are required to file a Transfer of Operator form, T-1.
- * If the well will remain temporarily abandoned, you must submit a new TA application, CP-111, before 04/30/2020.

You may contact me at the number above if you have questions.

Very truly yours,

Michael Maier"