

KANSAS CORPORATION COMMISSION
OIL & GAS CONSERVATION DIVISION

Form must be Typed
Form must be signed

TEMPORARY ABANDONMENT WELL APPLICATION

All blanks must be complete

OPERATOR: License#
Name:
Address 1:
Address 2:
City: State: Zip:
Contact Person:
Phone:
Contact Person Email:
Field Contact Person:
Field Contact Person Phone:

API No. 15-
Spot Description:
Sec. Twp. S. R.
GPS Location: Lat: Long:
Datum: NAD27 NAD83 WGS84
County: Elevation:
Lease Name: Well #:
Well Type: Oil Gas OG WSW Other:
SWD Permit #: ENHR Permit #:
Gas Storage Permit #:
Spud Date: Date Shut-In:

Table with 7 columns: Conductor, Surface, Production, Intermediate, Liner, Tubing. Rows include Size, Setting Depth, Amount of Cement, Top of Cement, Bottom of Cement.

Casing Fluid Level from Surface: How Determined? Date:
Casing Squeeze(s): to w / sacks of cement, to w / sacks of cement. Date:
Do you have a valid Oil & Gas Lease? Yes No
Depth and Type: Junk in Hole at Tools in Hole at Casing Leaks: Yes No Depth of casing leak(s):
Type Completion: ALT. I ALT. II Depth of: DV Tool: w / sacks of cement Port Collar: w / sack of cement
Packer Type: Size: Inch Set at: Feet
Total Depth: Plug Back Depth: Plug Back Method:

Geological Data:

Table with 4 columns: Formation Name, Formation Top, Formation Base, Completion Information. Rows 1 and 2.

UNDER PENALTY OF PERJURY I HEREBY ATTEST THAT THE INFORMATION CONTAINED HEREIN IS TRUE AND CORRECT TO THE BEST OF MY KNOWLEDGE

Submitted Electronically

Do NOT Write in This Space - KCC USE ONLY
Date Tested: Results: Date Plugged: Date Repaired: Date Put Back in Service:
Review Completed by: Comments:
TA Approved: Yes Denied Date:

Mail to the Appropriate KCC Conservation Office:

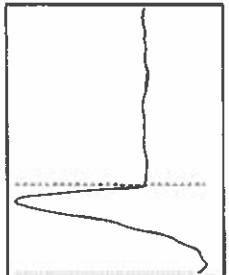
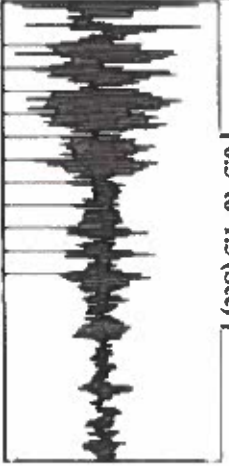
Table with 3 columns: Office Name, Address, Phone. Rows for District Offices #1, #2, #3, and #4.

Group: MyWells Well: crawley a-2 (acquired on: 03/11/19 12:50:19)



Filter Type: High Pass
 Manual Acoustic Velocity: 270.54 ft/s
 Automatic Collar Count: Yes
 Manual JTS/sec: 20.0401
 Time: 3.374 sec
 Joints: 68.7833 ft
 Depth: 2180.43 ft

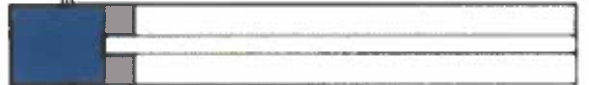
0.5 to 1.5 (Sec)



Analysis Method: Automatic

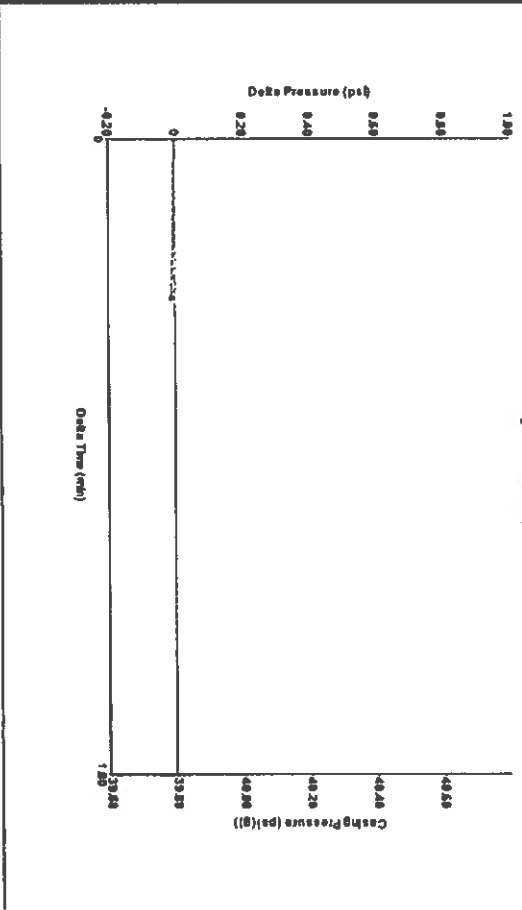
Group: MyWells Well: crawley a-2 (acquired on: 03/11/19 12:50:19)

Production	Potential	Casing	Producing
Current	Oil	Pressure	Annular
Oil	40	39.8	Gas Flow
Water	deg API	psi (g)	0
Gas	Sp.Gr: H2O	Casing Pressure Buildup	% Misc/FD
	0.71	-0.010	100
	Sp.Gr: AIR	psi	%
		0.25	
IPR Method	Vogel	min	
PBH/ SBHP	Production Efficiency	Gas/Liquid Interface Pressure	
	0.0	42.7	
		psi (g)	
		Liquid Level Depth	
		2180.43	
		ft	
		Pump Intake Depth	
		2351.00	
		ft	
		Formation Depth	
		2550.00	
		ft	
		Acoustic Velocity	
		1292.49	
		ft/s	



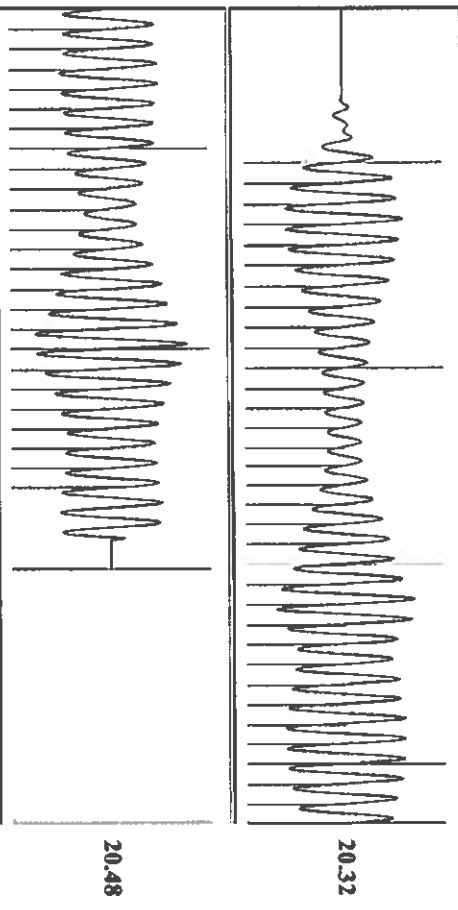
Formation Submergence
 Total Gaseous Liquid Column HT (TVD)
 Equivalent Gas Frac Liquid HT (TVD)
 Acoustic Test

Group: MyWells Well: crawley a-2 (acquired on: 03/11/19 12:50:19)



Change in Pressure: -0.01 psi
 Change in Time: 0.25 min
 P79424
 Range: 0 - 2 psi

Group: MyWells Well: crawley a-2 (acquired on: 03/11/19 12:50:19)



Acoustic Velocity: 1292.49 ft/s
 Joints Per Second: 20.3863
 Depth to liquid level: 2180.43 ft
 Automatic Collar Count: Yes
 Joints counted: 57
 Joints to liquid level: 68.7833
 Filter Width: 18.0401
 Time to 1st Collar: 0.376
 22.0401
 3.172

Conservation Division
District Office No. 1
210 E. Frontview, Suite A
Dodge City, KS 67801



Phone: 620-682-7933
<http://kcc.ks.gov/>

Dwight D. Keen, Chair
Shari Feist Albrecht, Commissioner
Jay Scott Emler, Commissioner

Laura Kelly, Governor

April 02, 2019

Katherine McClurkan
Merit Energy Company, LLC
13727 Noel Road, Suite 1200
Dallas, TX 75240

Re: Temporary Abandonment
API 15-129-01004-00-03
Crawley A 2
SW/4 Sec.04-35S-41W
Morton County, Kansas

Dear Katherine McClurkan:

"Your temporary abandonment (TA) application for the well listed above has been approved. In accordance with K.A.R. 82-3-111 the TA status of this well will expire 04/02/2020.

- * If you return this well to service or plug it, please notify the District Office.
- * If you sell this well you are required to file a Transfer of Operator form, T-1.
- * If the well will remain temporarily abandoned, you must submit a new TA application, CP-111, before 04/02/2020.

You may contact me at the number above if you have questions.

Very truly yours,

Michael Maier"