

KANSAS CORPORATION COMMISSION
OIL & GAS CONSERVATION DIVISION

TEMPORARY ABANDONMENT WELL APPLICATION

OPERATOR: License#
Name:
Address 1:
Address 2:
City: State: Zip:
Contact Person:
Phone:
Contact Person Email:
Field Contact Person:
Field Contact Person Phone:

API No. 15-
Spot Description:
Sec. Twp. S. R.
GPS Location: Lat: Long:
Datum: NAD27 NAD83 WGS84
County: Elevation:
Lease Name: Well #:
Well Type: Oil Gas OG WSW Other:
SWD Permit #: ENHR Permit #:
Gas Storage Permit #:
Spud Date: Date Shut-In:

Table with 7 columns: Conductor, Surface, Production, Intermediate, Liner, Tubing. Rows include Size, Setting Depth, Amount of Cement, Top of Cement, Bottom of Cement.

Casing Fluid Level from Surface: How Determined? Date:
Casing Squeeze(s): to w / sacks of cement, to w / sacks of cement. Date:
Do you have a valid Oil & Gas Lease? Yes No
Depth and Type: Junk in Hole at Tools in Hole at Casing Leaks: Yes No Depth of casing leak(s):
Type Completion: ALT. I ALT. II Depth of: DV Tool: w / sacks of cement Port Collar: w / sack of cement
Packer Type: Size: Inch Set at: Feet
Total Depth: Plug Back Depth: Plug Back Method:

Geological Data:

Table with 4 columns: Formation Name, Formation Top, Formation Base, Completion Information. Rows 1 and 2.

UNDER PENALTY OF PERJURY I HEREBY ATTEST THAT THE INFORMATION CONTAINED HEREIN IS TRUE AND CORRECT TO THE BEST OF MY KNOWLEDGE

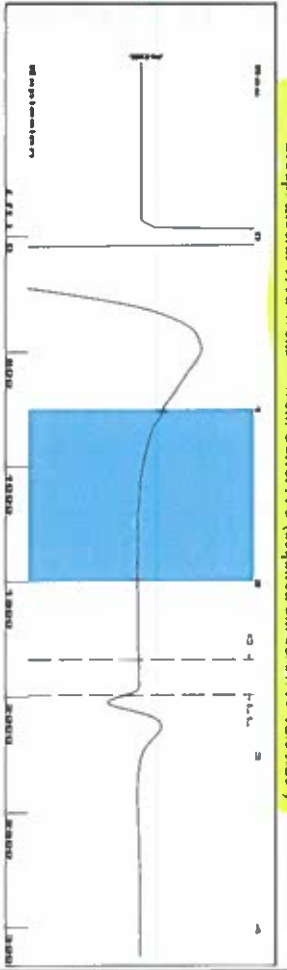
Submitted Electronically

Do NOT Write in This Space - KCC USE ONLY
Date Tested: Results: Date Plugged: Date Repaired: Date Put Back in Service:
Review Completed by: Comments:
TA Approved: Yes Denied Date:

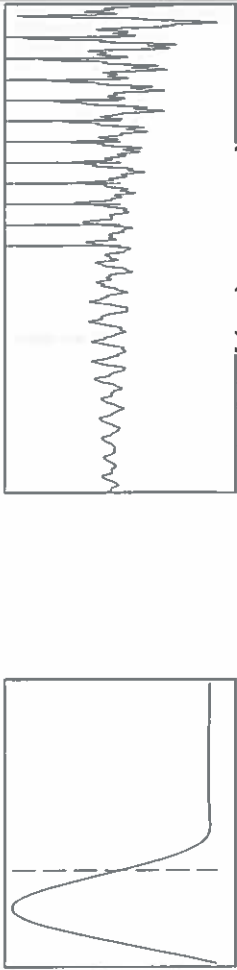
Mail to the Appropriate KCC Conservation Office:

Map of Kansas with 4 numbered districts and corresponding office addresses and phone numbers.

Group: Liberal TAVD Wells Well: Correl A-3 (acquired on: 03/07/19 12:51:23)



Filter Type High Pass Automatic Collar Count Yes
 Manual Acoustic Velo 1481.31 N/s Manual JTS/sec 23.3645
 Time 2.647 sec
 Joints 62.8478 Jts
 Depth 1992.27 ft



Analysis Method: Automatic

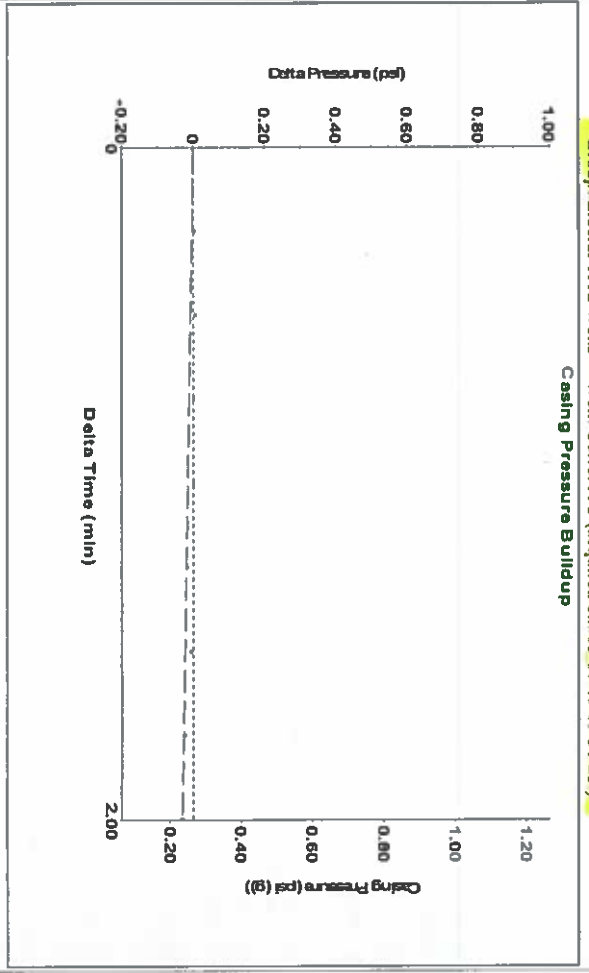
Group: Liberal TAVD Wells Well: Correl A-3 (acquired on: 03/07/19 12:51:23)

| | | | |
|-----------------------|--------------|-------------------------------|---------------------|
| Production Current | Potential | Casing Pressure | Static |
| Oil -*- | -*- BBL/D | 0.3 psi (g) | Oil Column Height |
| Water -*- | -*- BBL/D | -0.031 psi | MD 0 ft |
| Gas -*- | -*- Mscf/D | 2.00 min | Water Column Height |
| IPR Method | Vogel | Gas/Liquid Interface Pressure | MD 4158 ft |
| PBHP/SBHP | -*- | 0.8 psi (g) | Static BHHP |
| Production Efficiency | 0.0 | Liquid Level Depth | 1891.2 psi (g) |
| Oil 40 deg API | | 1992.27 ft | |
| Water 1.05 Sp.Gr:H2O | | Pump Intake Depth | |
| Gas 0.55 Sp.Gr:AIR | | 6005.00 ft | |
| Acoustic Velocity | 1505.31 ft/s | Formation Depth | |
| | | 6150.00 ft | |



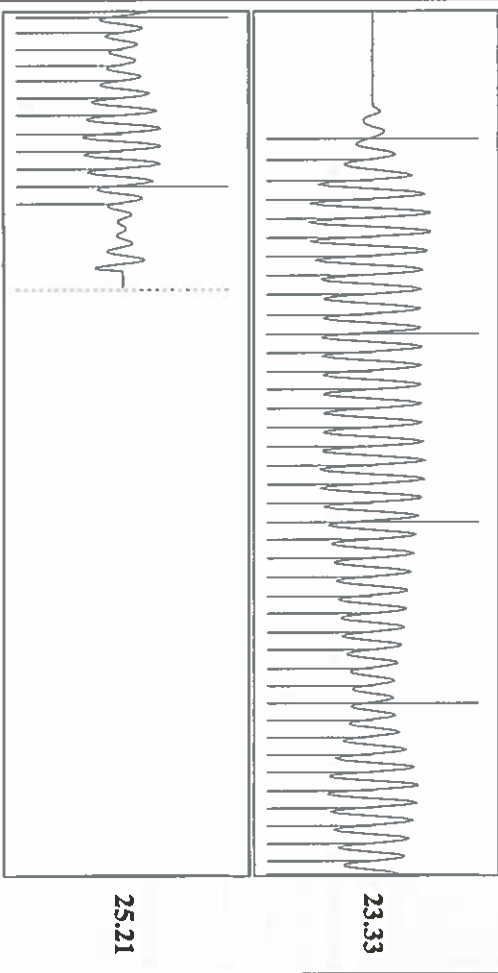
Group: Liberal TAVD Wells Well: Correl A-3 (acquired on: 03/07/19 12:51:23)

Shot @ 2200H AP.



Change in Pressure -0.03 psi PTT1249
 Change in Time 2.00 min Range 0 - 7 psi

Group: Liberal TAVD Wells Well: Correl A-3 (acquired on: 03/07/19 12:51:23)



| | | | |
|------------------------|----------------|------------------------|---------|
| Acoustic Velocity | 1505.31 ft/s | Joints counted | 51 |
| Joints Per Second | 23.743 Jts/sec | Joints to liquid level | 62.8478 |
| Depth to liquid level | 1992.27 ft | Filter Width | 21.3645 |
| Automatic Collar Count | Yes | Time to 1st Collar | 0.296 |

Conservation Division
District Office No. 1
210 E. Frontview, Suite A
Dodge City, KS 67801



Phone: 620-682-7933
<http://kcc.ks.gov/>

Dwight D. Keen, Chair
Shari Feist Albrecht, Commissioner
Jay Scott Emler, Commissioner

Laura Kelly, Governor

March 12, 2019

Katherine McClurkan
Merit Energy Company, LLC
13727 NOEL ROAD, SUITE 1200
DALLAS, TX 75240

Re: Temporary Abandonment
API 15-175-21653-00-02
Correll A 3
SE/4 Sec.24-34S-33W
Seward County, Kansas

Dear Katherine McClurkan:

"Your temporary abandonment (TA) application for the well listed above has been approved. In accordance with K.A.R. 82-3-111 the TA status of this well will expire 03/12/2020.

- * If you return this well to service or plug it, please notify the District Office.
- * If you sell this well you are required to file a Transfer of Operator form, T-1.
- * If the well will remain temporarily abandoned, you must submit a new TA application, CP-111, before 03/12/2020.

You may contact me at the number above if you have questions.

Very truly yours,

Michael Maier"