

KANSAS CORPORATION COMMISSION
OIL & GAS CONSERVATION DIVISION

TEMPORARY ABANDONMENT WELL APPLICATION

OPERATOR: License#
Name:
Address 1:
Address 2:
City: State: Zip:
Contact Person:
Phone:
Contact Person Email:
Field Contact Person:
Field Contact Person Phone:

API No. 15-
Spot Description:
Sec. Twp. S. R.
GPS Location: Lat: Long:
Datum: NAD27 NAD83 WGS84
County: Elevation:
Lease Name: Well #:
Well Type: Oil Gas OG WSW Other:
SWD Permit #: ENHR Permit #:
Gas Storage Permit #:
Spud Date: Date Shut-In:

Table with 7 columns: Conductor, Surface, Production, Intermediate, Liner, Tubing. Rows include Size, Setting Depth, Amount of Cement, Top of Cement, Bottom of Cement.

Casing Fluid Level from Surface: How Determined? Date:
Casing Squeeze(s): to w / sacks of cement, to w / sacks of cement. Date:
Do you have a valid Oil & Gas Lease? Yes No
Depth and Type: Junk in Hole at Tools in Hole at Casing Leaks: Yes No Depth of casing leak(s):
Type Completion: ALT. I ALT. II Depth of: DV Tool: w / sacks of cement Port Collar: w / sack of cement
Packer Type: Size: Inch Set at: Feet
Total Depth: Plug Back Depth: Plug Back Method:

Geological Data:

Table with 4 columns: Formation Name, Formation Top, Formation Base, Completion Information. Rows 1 and 2.

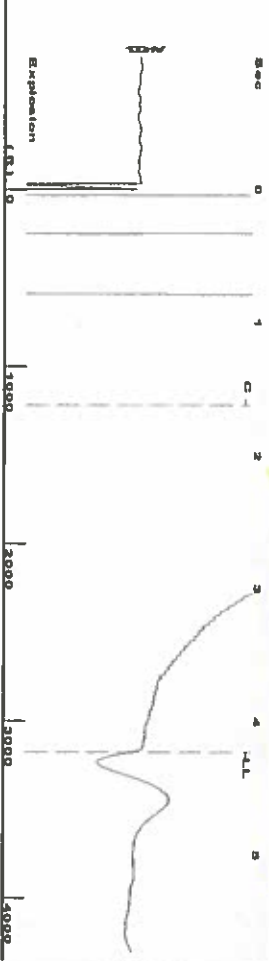
UNDER PENALTY OF PERJURY I HEREBY ATTEST THAT THE INFORMATION CONTAINED HEREIN IS TRUE AND CORRECT TO THE BEST OF MY KNOWLEDGE

Submitted Electronically

Do NOT Write in This Space - KCC USE ONLY
Date Tested: Results: Date Plugged: Date Repaired: Date Put Back in Service:
Review Completed by: Comments:
TA Approved: Yes Denied Date:

Mail to the Appropriate KCC Conservation Office:

Map of Kansas with 4 numbered districts. Table with 2 columns: Office Name/Address, Phone Number.



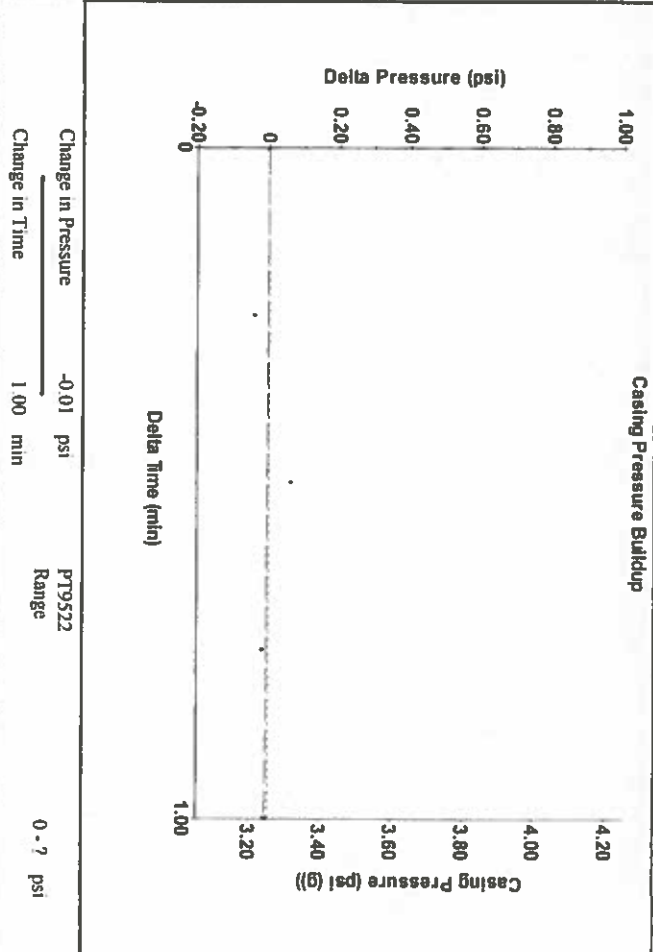
Filter Type High Pass Automatic Collar Count Yes  
 Manual Acoustic Vel 1509.52 ft/s Manual JTS/sec 23.8095  
 Time 4.227 sec  
 Joints 100.166 Jts  
 Depth 3175.26 ft

0.5 to 1.5 (Sec)

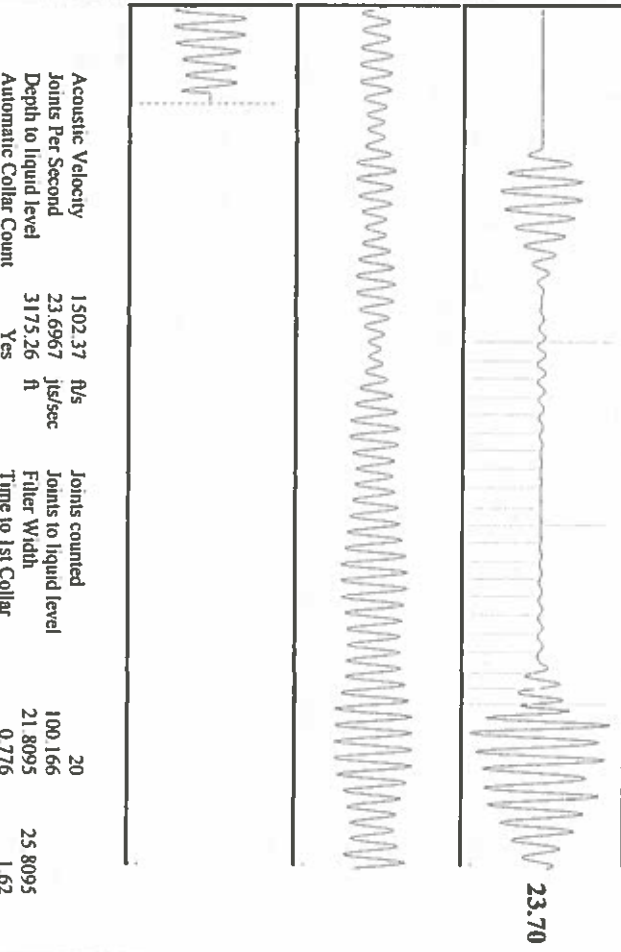


Analysis Method: Automatic

Production	Potential	Casing Pressure	Producing
Current	Oil - * - *	3.3 psi (g)	Annular
Oil - * - *	Water - * - *	Casing Pressure Buildup	Gas Flow
Water - * - *	Gas - * - *	-0.007 psi	0 Mscf/D
Gas - * - *		1.00 min	% Liquid
		Gas/Liquid Interface Pressure	100 %
IPR Method	Vogel	4.4 psi (g)	
PBHP/SBHP	- * - *	Liquid Level Depth	
Production Efficiency	0.0	3175.26 ft	
		Pump Intake Depth	
		5304.00 ft	
		Formation Depth	
		5275.00 ft	
Acoustic Velocity	1502.37 ft/s		



Change in Pressure -0.01 psi PT9522  
 Change in Time 1.00 min Range 0.2 psi



Acoustic Velocity 1502.37 ft/s Joints counted 20  
 Joints Per Second 23.6967 Jts/sec Joints to liquid level 100.166  
 Depth to liquid level 3175.26 ft Filter Width 21.8095  
 Automatic Collar Count Yes Time to 1st Collar 0.776

Conservation Division  
District Office No. 1  
210 E. Frontview, Suite A  
Dodge City, KS 67801



Phone: 620-682-7933  
<http://kcc.ks.gov/>

Dwight D. Keen, Chair  
Shari Feist Albrecht, Commissioner  
Jay Scott Emler, Commissioner

Laura Kelly, Governor

March 19, 2019

Katherine McClurkan  
Merit Energy Company, LLC  
13727 Noel Road, Suite 1200  
Dallas, TX 75240

Re: Temporary Abandonment  
API 15-081-21291-00-01  
Gregg F 12  
NW/4 Sec.04-29S-34W  
Haskell County, Kansas

Dear Katherine McClurkan:

"Your temporary abandonment (TA) application for the well listed above has been approved. In accordance with K.A.R. 82-3-111 the TA status of this well will expire 03/19/2020.

- \* If you return this well to service or plug it, please notify the District Office.
- \* If you sell this well you are required to file a Transfer of Operator form, T-1.
- \* If the well will remain temporarily abandoned, you must submit a new TA application, CP-111, before 03/19/2020.

You may contact me at the number above if you have questions.

Very truly yours,

Michael Maier"