

KANSAS CORPORATION COMMISSION
OIL & GAS CONSERVATION DIVISION

TEMPORARY ABANDONMENT WELL APPLICATION

OPERATOR: License#
Name:
Address 1:
Address 2:
City: State: Zip:
Contact Person:
Phone:
Contact Person Email:
Field Contact Person:
Field Contact Person Phone:

API No. 15-
Spot Description:
Sec. Twp. S. R.
GPS Location: Lat: Long:
Datum: NAD27 NAD83 WGS84
County: Elevation:
Lease Name: Well #:
Well Type: Oil Gas OG WSW Other:
SWD Permit #: ENHR Permit #:
Gas Storage Permit #:
Spud Date: Date Shut-In:

Table with 7 columns: Conductor, Surface, Production, Intermediate, Liner, Tubing. Rows include Size, Setting Depth, Amount of Cement, Top of Cement, Bottom of Cement.

Casing Fluid Level from Surface: How Determined? Date:
Casing Squeeze(s): to w / sacks of cement, to w / sacks of cement. Date:
Do you have a valid Oil & Gas Lease? Yes No
Depth and Type: Junk in Hole at Tools in Hole at Casing Leaks: Yes No Depth of casing leak(s):
Type Completion: ALT. I ALT. II Depth of: DV Tool: w / sacks of cement Port Collar: w / sack of cement
Packer Type: Size: Inch Set at: Feet
Total Depth: Plug Back Depth: Plug Back Method:

Geological Data:

Table with 4 columns: Formation Name, Formation Top, Formation Base, Completion Information. Rows 1 and 2.

UNDER PENALTY OF PERJURY I HEREBY ATTEST THAT THE INFORMATION CONTAINED HEREIN IS TRUE AND CORRECT TO THE BEST OF MY KNOWLEDGE

Submitted Electronically

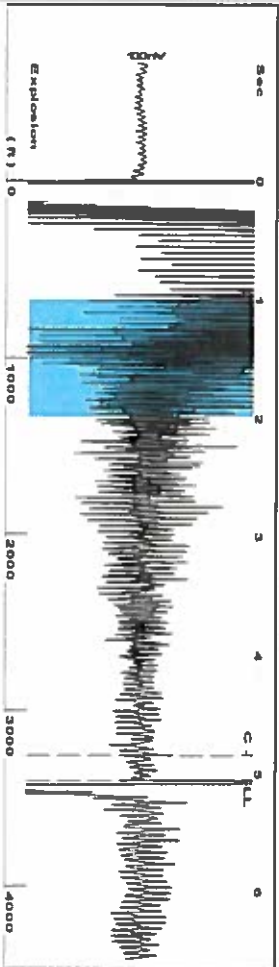
Do NOT Write in This Space - KCC USE ONLY
Date Tested: Results: Date Plugged: Date Repaired: Date Put Back in Service:
Review Completed by: Comments:
TA Approved: Yes Denied Date:

Mail to the Appropriate KCC Conservation Office:

Table with 2 columns: Office Address, Phone. Rows for District Office #1, #2, #3, #4.

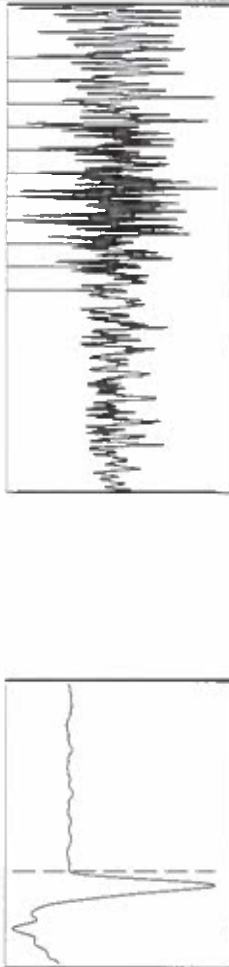


Group: TAVD Well: Gregg EM 6 (acquired on: 03/07/19 11:22:11)



Filter Type High Pass Automatic Collar Count Yes
 Manual Acoustic Velok1326.36 ft/s Manual JTS/sec 20.9205
 Time 5.057 sec
 Joints 107.29 Jts
 Depth 3401.09 ft

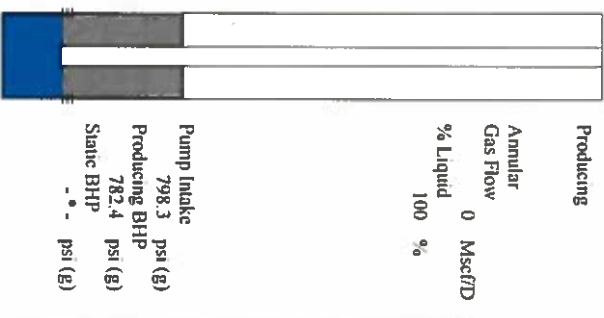
1.0 to 2.0 (Sec) |



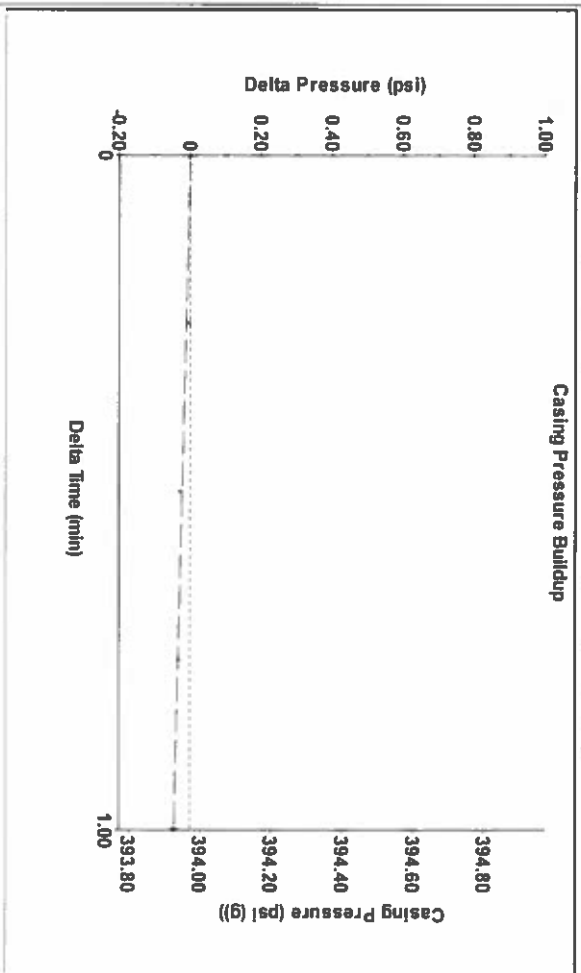
Analysis Method: Automatic

Group: TAVD Well: Gregg EM 6 (acquired on: 03/07/19 11:22:11)

Production	Potential	Casing Pressure	Producing
Current	Oil - * -	394.0 psi (g)	Annular
Water - * -	Water - * -	Casing Pressure Buildup	Gas Flow
Gas - * -	Gas - * -	-0.045 psi	0 Mscf/D
IPR Method	Vogel	Gas/Liquid Interface Pressure	% Liquid
PBHP/SBHP	0.0	426.4 psi (g)	100 %
Production Efficiency		Liquid Level Depth	
		3401.09 ft	
Oil 40 deg API		Pump Intake Depth	
Water 1.05 Sp.Gr.H2O		4550.00 ft	
Gas 0.63 Sp.Gr.AIR		Formation Depth	
Acoustic Velocity	1345.1 ft/s	4500.00 ft	
Formation Submergence			
Total Gaseous Liquid Column HT (TVD)			
Equivalent Gas Free Liquid HT (TVD)			
Acoustic Test			

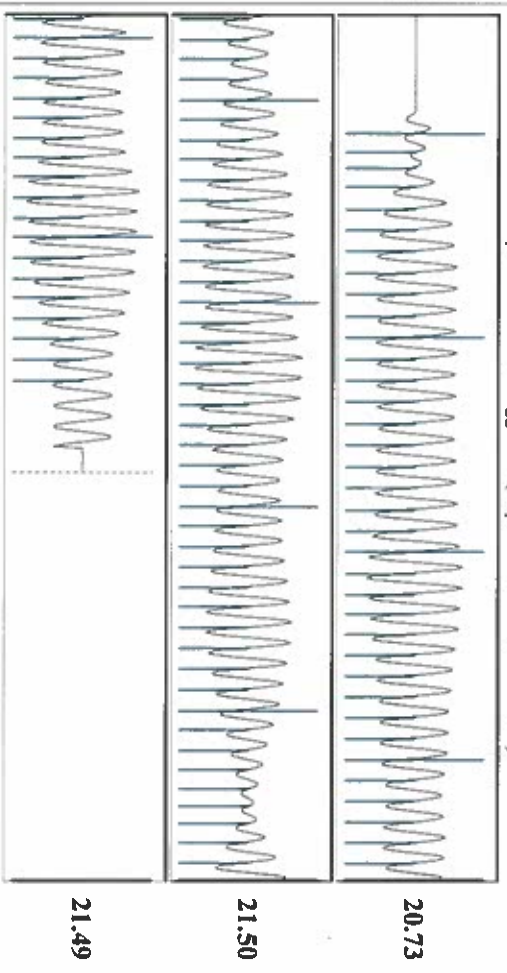


Group: TAVD Well: Gregg EM 6 (acquired on: 03/07/19 11:22:11)



Change in Pressure -0.05 psi
 Change in Time 1.00 min
 PT8197 Range
 0 - 2 psi

Group: TAVD Well: Gregg EM 6 (acquired on: 03/07/19 11:22:11)



Acoustic Velocity	1345.1 ft/s	Joints counted	97
Joints Per Second	21.2161 ft/sec	Joints to liquid level	107.29
Depth to liquid level	3401.09 ft	Filler Width	18.9205
Automatic Collar Count	Yes	Time to 1st Collar	0.272
			4.844

Conservation Division
District Office No. 1
210 E. Frontview, Suite A
Dodge City, KS 67801



Phone: 620-682-7933
<http://kcc.ks.gov/>

Dwight D. Keen, Chair
Shari Feist Albrecht, Commissioner
Jay Scott Emler, Commissioner

Laura Kelly, Governor

March 12, 2019

Katherine McClurkan
Merit Energy Company, LLC
13727 Noel Road, Suite 1200
Dallas, TX 75240

Re: Temporary Abandonment
API 15-081-10203-00-02
E M Gregg 6
NE/4 Sec.04-29S-34W
Haskell County, Kansas

Dear Katherine McClurkan:

"Your temporary abandonment (TA) application for the well listed above has been approved. In accordance with K.A.R. 82-3-111 the TA status of this well will expire 03/12/2020.

- * If you return this well to service or plug it, please notify the District Office.
- * If you sell this well you are required to file a Transfer of Operator form, T-1.
- * If the well will remain temporarily abandoned, you must submit a new TA application, CP-111, before 03/12/2020.

You may contact me at the number above if you have questions.

Very truly yours,

Michael Maier"