

KANSAS CORPORATION COMMISSION
OIL & GAS CONSERVATION DIVISION

TEMPORARY ABANDONMENT WELL APPLICATION

OPERATOR: License#
Name:
Address 1:
Address 2:
City: State: Zip:
Contact Person:
Phone:
Contact Person Email:
Field Contact Person:
Field Contact Person Phone:

API No. 15-
Spot Description:
Sec. Twp. S. R.
GPS Location: Lat: Long:
Datum: NAD27 NAD83 WGS84
County: Elevation:
Lease Name: Well #:
Well Type: Oil Gas OG WSW Other:
SWD Permit #: ENHR Permit #:
Gas Storage Permit #:
Spud Date: Date Shut-In:

Table with 7 columns: Conductor, Surface, Production, Intermediate, Liner, Tubing. Rows include Size, Setting Depth, Amount of Cement, Top of Cement, Bottom of Cement.

Casing Fluid Level from Surface: How Determined? Date:
Casing Squeeze(s): to w / sacks of cement, to w / sacks of cement. Date:
Do you have a valid Oil & Gas Lease? Yes No
Depth and Type: Junk in Hole at Tools in Hole at Casing Leaks: Yes No Depth of casing leak(s):
Type Completion: ALT. I ALT. II Depth of: DV Tool: w / sacks of cement Port Collar: w / sack of cement
Packer Type: Size: Inch Set at: Feet
Total Depth: Plug Back Depth: Plug Back Method:

Geological Data:

Table with 4 columns: Formation Name, Formation Top, Formation Base, Completion Information. Rows 1 and 2.

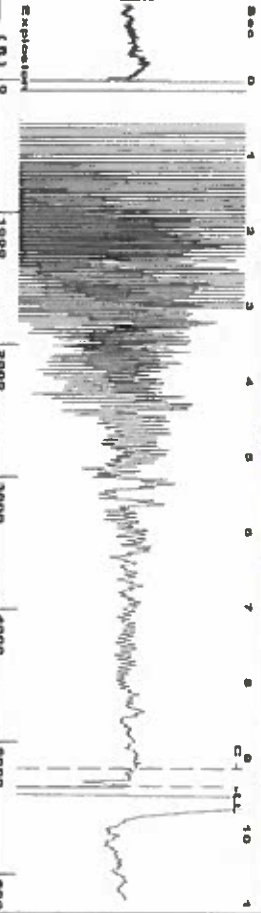
UNDER PENALTY OF PERJURY I HEREBY ATTEST THAT THE INFORMATION CONTAINED HEREIN IS TRUE AND CORRECT TO THE BEST OF MY KNOWLEDGE

Submitted Electronically

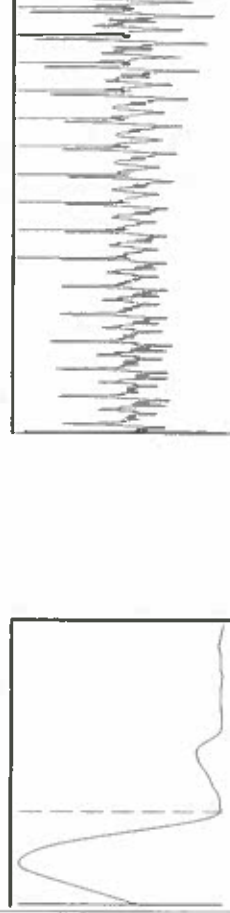
Do NOT Write in This Space - KCC USE ONLY
Date Tested: Results: Date Plugged: Date Repaired: Date Put Back in Service:
Review Completed by: Comments:
TA Approved: Yes Denied Date:

Mail to the Appropriate KCC Conservation Office:

Table with 2 columns: Office Address, Phone. Rows for District Office #1, #2, #3, #4.

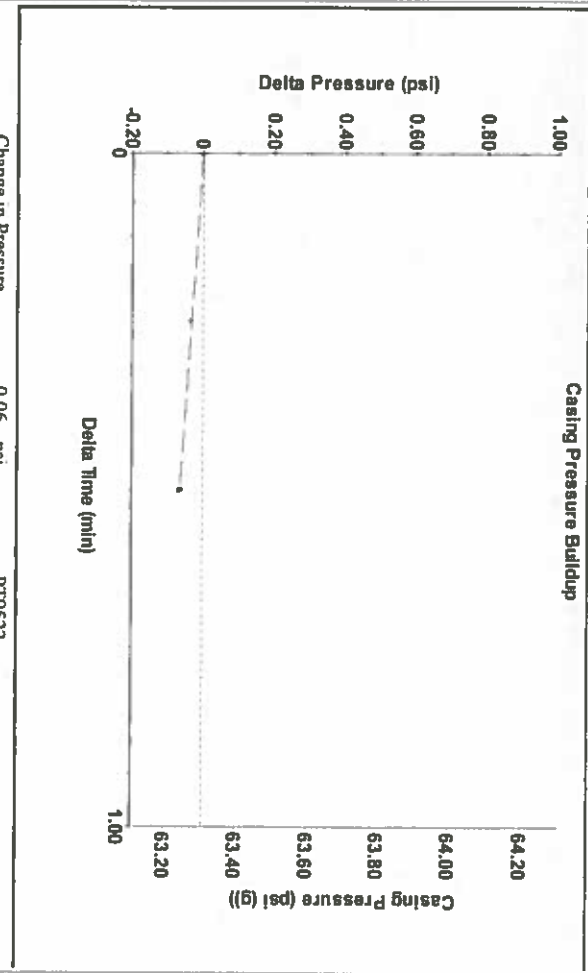
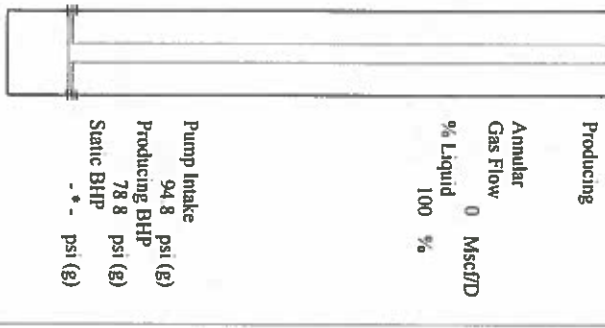


Filter Type: High Pass  
 Manual Acoustic Velocity: 106.46 ft/s  
 Automatic Collar Count: Yes  
 Manual JTS/sec: 17.452  
 Time: 9.387 sec  
 Joints: 168.305 Jts  
 Depth: 5335.28 ft

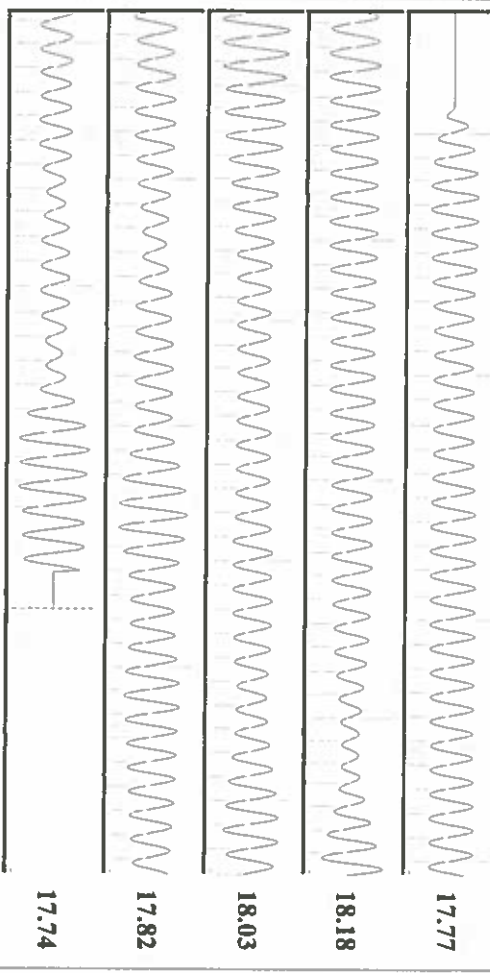


Analysis Method: Automatic

Production	Potential	Casing Pressure	Producing
Current	Oil: -*- BBL/D	63.3 psi (g)	Annular
Water: -*- BBL/D	Water: -*- BBL/D	-0.063 psi	Gas Flow
Gas: -*- Mscf/D	Gas: -*- Mscf/D	0.50 mmb	% Liquid
IPR Method	Veget	Gas/Liquid Interface Pressure	0 Mscf/D
PBHP/SBHP	-*-	76.2 psi (g)	% Liquid
Production Efficiency	0.0	Liquid Level Depth	100 %
		5335.28 ft	
Oil: 40 deg API		Pump Intake Depth	
Water: 1.05 Sp.Gr.H2O		5390.00 ft	
Gas: 0.85 Sp.Gr.AIR		Formation Depth	
		5343.00 ft	
Acoustic Velocity	1136.74 ft/s		



Change in Pressure: -0.06 psi  
 Change in Time: 0.50 min  
 Range: PT9522  
 Delta Time (min): 1.00  
 Casing Pressure (psi (g)): 63.20, 63.40, 63.60, 63.80, 64.00, 64.20



Acoustic Velocity	1136.74 ft/s	Joints counted	159
Joints Per Second	17.9296 Jts/sec	Joints to liquid level	168.305
Depth to liquid level	5335.28 ft	Filter Width	15.452
Automatic Collar Count	Yes	Time to 1st Collar	0.28

Conservation Division  
District Office No. 1  
210 E. Frontview, Suite A  
Dodge City, KS 67801



Phone: 620-682-7933  
<http://kcc.ks.gov/>

Dwight D. Keen, Chair  
Shari Feist Albrecht, Commissioner  
Jay Scott Emler, Commissioner

Laura Kelly, Governor

March 12, 2019

Katherine McClurkan  
Merit Energy Company, LLC  
13727 Noel Road, Suite 1200  
Dallas, TX 75240

Re: Temporary Abandonment  
API 15-067-21498-00-00  
HJV Harper A 2  
NW/4 Sec.12-30S-35W  
Grant County, Kansas

Dear Katherine McClurkan:

"Your temporary abandonment (TA) application for the well listed above has been approved. In accordance with K.A.R. 82-3-111 the TA status of this well will expire 03/12/2020.

- \* If you return this well to service or plug it, please notify the District Office.
- \* If you sell this well you are required to file a Transfer of Operator form, T-1.
- \* If the well will remain temporarily abandoned, you must submit a new TA application, CP-111, before 03/12/2020.

You may contact me at the number above if you have questions.

Very truly yours,

Michael Maier"