

KANSAS CORPORATION COMMISSION
OIL & GAS CONSERVATION DIVISION

Form must be Typed
Form must be signed

TEMPORARY ABANDONMENT WELL APPLICATION

All blanks must be complete

OPERATOR: License#
Name:
Address 1:
Address 2:
City: State: Zip:
Contact Person:
Phone:
Contact Person Email:
Field Contact Person:
Field Contact Person Phone:

API No. 15-
Spot Description:
Sec. Twp. S. R.
feet from N / S Line of Section
feet from E / W Line of Section
GPS Location: Lat: , Long:
Datum: NAD27 NAD83 WGS84
County: Elevation: GL KB
Lease Name: Well #:
Well Type: Oil Gas OG WSW Other:
SWD Permit #: ENHR Permit #:
Gas Storage Permit #:
Spud Date: Date Shut-In:

Table with 7 columns: Conductor, Surface, Production, Intermediate, Liner, Tubing. Rows include Size, Setting Depth, Amount of Cement, Top of Cement, Bottom of Cement.

Casing Fluid Level from Surface: How Determined? Date:
Casing Squeeze(s): to w / sacks of cement, to w / sacks of cement. Date:
Do you have a valid Oil & Gas Lease? Yes No
Depth and Type: Junk in Hole at Tools in Hole at Casing Leaks: Yes No Depth of casing leak(s):
Type Completion: ALT. I ALT. II Depth of: DV Tool: w / sacks of cement Port Collar: w / sack of cement
Packer Type: Size: Inch Set at: Feet
Total Depth: Plug Back Depth: Plug Back Method:

Geological Data:

Table with 4 columns: Formation Name, Formation Top, Formation Base, Completion Information. Rows 1 and 2.

UNDER PENALTY OF PERJURY I HEREBY ATTEST THAT THE INFORMATION CONTAINED HEREIN IS TRUE AND CORRECT TO THE BEST OF MY KNOWLEDGE

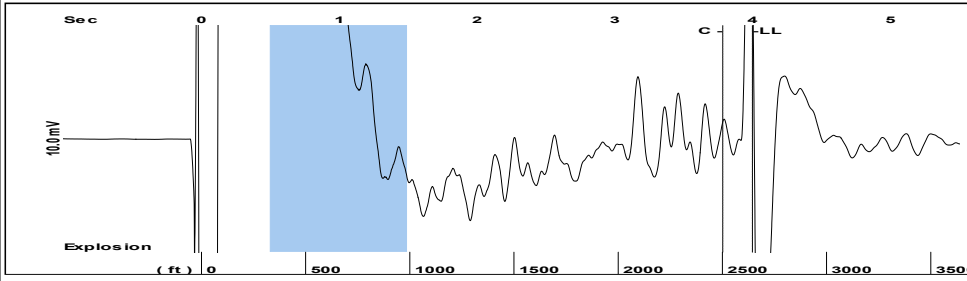
Submitted Electronically

Do NOT Write in This Space - KCC USE ONLY
Date Tested: Results: Date Plugged: Date Repaired: Date Put Back in Service:
Review Completed by: Comments:
TA Approved: Yes Denied Date:

Mail to the Appropriate KCC Conservation Office:

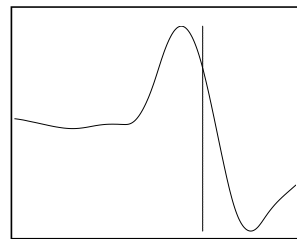
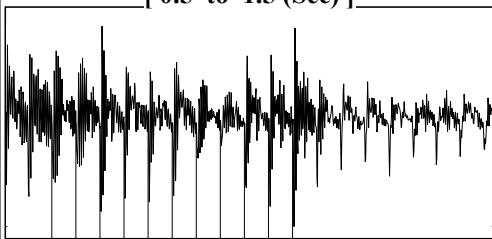
Table with 3 columns: District Office #, Address, Phone. Rows 1-4.

Group: MyWells Well: Dudrey # 1 (acquired on: 03/11/19 09:50:41)



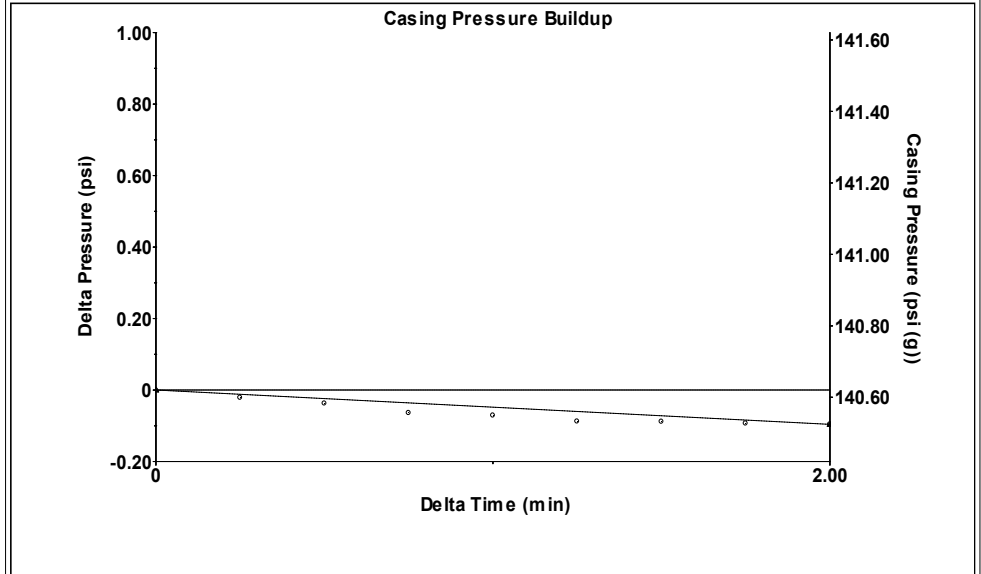
Filter Type High Pass Automatic Collar Count Yes Time 3.999 sec
 Manual Acoustic Velo 1319.43 ft/s Manual JTS/sec 20.2429 Joints 81.1226 Jts
 Depth 2643.78 ft

[0.5 to 1.5 (Sec)]



Analysis Method: Automatic

Group: MyWells Well: Dudrey # 1 (acquired on: 03/11/19 09:50:41)

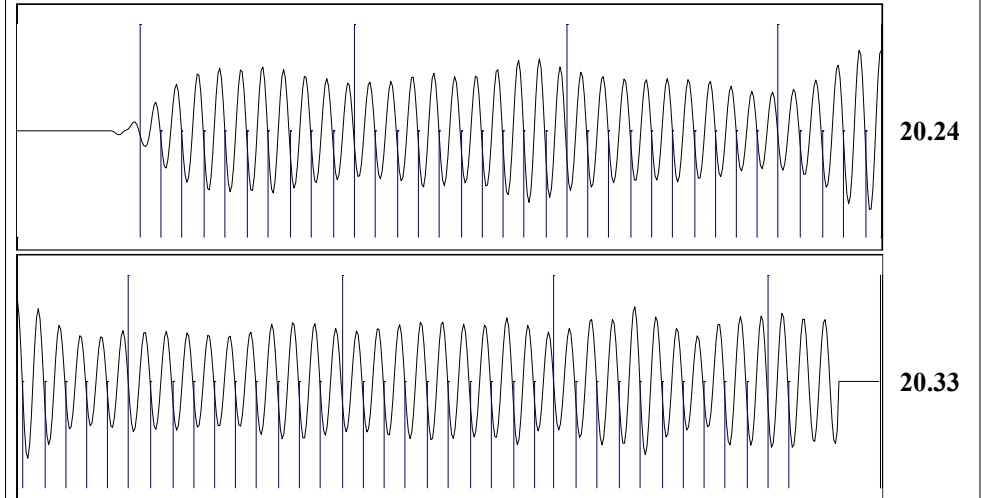


Change in Pressure -0.10 psi PT12865
 Change in Time 2.00 min Range 0 - ? psi

Group: MyWells Well: Dudrey # 1 (acquired on: 03/11/19 09:50:41)

Production	Potential	Casing Pressure		Producing	
Current	- * - BBL/D	140.6 psi (g)		Annular Gas Flow	0 Mscf/D
Oil - * -	- * - BBL/D	Casing Pressure Buildup		% Liquid	100 %
Water - * -	- * - Mscf/D	-0.096 psi			
Gas - * -		2.00 min			
IPR Method	Vogel	Gas/Liquid Interface Pressure			
PBHP/SBHP	- * -	150.3 psi (g)			
Production Efficiency	0.0				
		Liquid Level Depth			
		2643.78 ft			
Oil 40 deg.API		Pump Intake Depth			
Water 1.05 Sp.Gr.H2O		2643.00 ft			
Gas 0.68 Sp.Gr.AIR		Formation Depth			
		2643.00 ft			
Acoustic Velocity	1322.22 ft/s				
Formation Submergence					
Total Gaseous Liquid Column HT (TVD)	- * - ft				
Equivalent Gas Free Liquid HT (TVD)	- * - ft				
Acoustic Test					
		Pump Intake			
		150.3 psi (g)			
		Producing BHP			
		150.3 psi (g)			
		Static BHP			
		- * - psi (g)			

Group: MyWells Well: Dudrey # 1 (acquired on: 03/11/19 09:50:41)



Acoustic Velocity 1322.22 ft/s Joints counted 71
 Joints Per Second 20.2857 jts/sec Joints to liquid level 81.1226
 Depth to liquid level 2643.78 ft Filter Width 18.2429
 Automatic Collar Count Yes Time to 1st Collar 0.284 3.784

Conservation Division
District Office No. 1
210 E. Frontview, Suite A
Dodge City, KS 67801



Phone: 620-682-7933
<http://kcc.ks.gov/>

Dwight D. Keen, Chair
Shari Feist Albrecht, Commissioner
Jay Scott Emler, Commissioner

Laura Kelly, Governor

April 02, 2019

Melody C. Fletcher
Oil Producers Inc. of Kansas
1710 WATERFRONT PKWY
WICHITA, KS 67206-6603

Re: Temporary Abandonment
API 15-175-20181-00-01
DUDREY 1
SW/4 Sec.07-33S-31W
Seward County, Kansas

Dear Melody C. Fletcher:

"Your temporary abandonment (TA) application for the well listed above has been approved. In accordance with K.A.R. 82-3-111 the TA status of this well will expire 04/02/2020.

- * If you return this well to service or plug it, please notify the District Office.
- * If you sell this well you are required to file a Transfer of Operator form, T-1.
- * If the well will remain temporarily abandoned, you must submit a new TA application, CP-111, before 04/02/2020.

You may contact me at the number above if you have questions.

Very truly yours,

Michael Maier"