

KANSAS CORPORATION COMMISSION
OIL & GAS CONSERVATION DIVISION

Form must be Typed
Form must be signed

TEMPORARY ABANDONMENT WELL APPLICATION

All blanks must be complete

OPERATOR: License#
Name:
Address 1:
Address 2:
City: State: Zip:
Contact Person:
Phone:
Contact Person Email:
Field Contact Person:
Field Contact Person Phone:

API No. 15-
Spot Description:
Sec. Twp. S. R.
GPS Location: Lat: Long:
Datum: NAD27 NAD83 WGS84
County: Elevation:
Lease Name: Well #:
Well Type: Oil Gas OG WSW Other:
SWD Permit #: ENHR Permit #:
Gas Storage Permit #:
Spud Date: Date Shut-In:

Table with 7 columns: Conductor, Surface, Production, Intermediate, Liner, Tubing. Rows include Size, Setting Depth, Amount of Cement, Top of Cement, Bottom of Cement.

Casing Fluid Level from Surface: How Determined? Date:
Casing Squeeze(s): to w / sacks of cement, to w / sacks of cement. Date:
Do you have a valid Oil & Gas Lease? Yes No
Depth and Type: Junk in Hole at Tools in Hole at Casing Leaks: Yes No Depth of casing leak(s):
Type Completion: ALT. I ALT. II Depth of: DV Tool: w / sacks of cement Port Collar: w / sack of cement
Packer Type: Size: Inch Set at: Feet
Total Depth: Plug Back Depth: Plug Back Method:

Geological Data:

Table with 4 columns: Formation Name, Formation Top, Formation Base, Completion Information. Rows 1 and 2.

UNDER PENALTY OF PERJURY I HEREBY ATTEST THAT THE INFORMATION CONTAINED HEREIN IS TRUE AND CORRECT TO THE BEST OF MY KNOWLEDGE

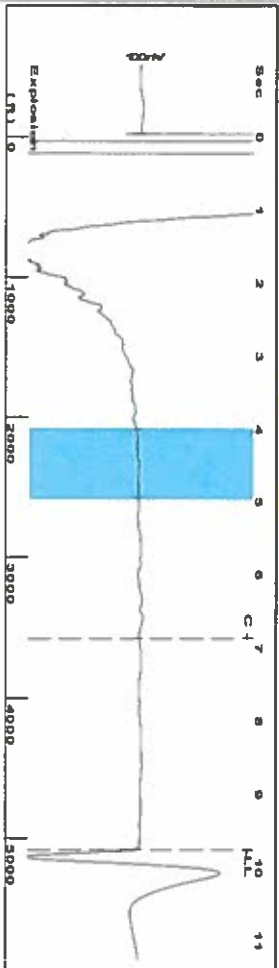
Submitted Electronically

Do NOT Write in This Space - KCC USE ONLY
Date Tested: Results: Date Plugged: Date Repaired: Date Put Back in Service:
Review Completed by: Comments:
TA Approved: Yes Denied Date:

Mail to the Appropriate KCC Conservation Office:

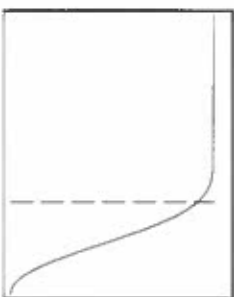
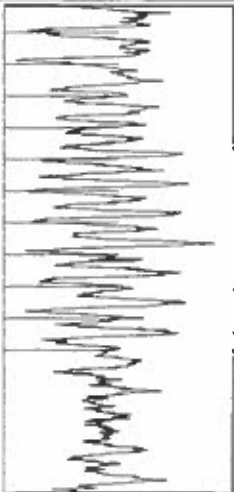
Table with 2 columns: Office Address, Phone. Rows for District Office #1, #2, #3, #4.

Group: Garden City Rt 6 Well: Weeks Farm A#1 (acquired on: 03/07/19 13:29:23)



Filter Type: High Pass
Manual Acoustic Vel: 972.393 ft/s
Automatic Collar Count: Yes
Manual JTS/sec: 15.3374
Time: 9.766 sec
Joints: 160.324 JIS
Depth: 5082.26 ft

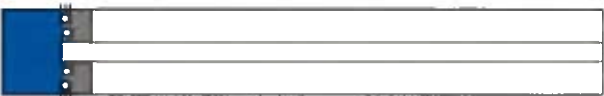
[4.0 to 5.0 (Sec)]



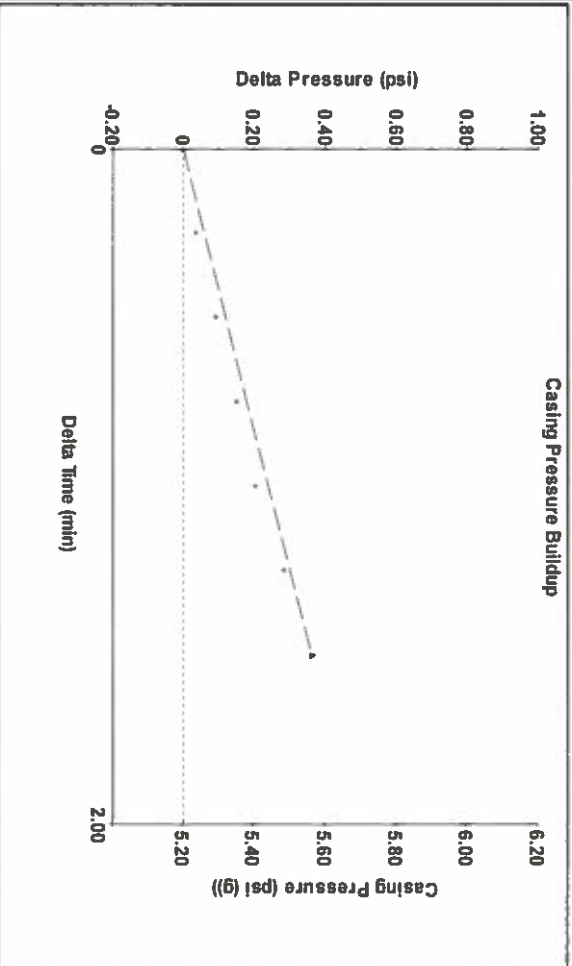
Analysis Method: Automatic

Group: Garden City Rt 6 Well: Weeks Farm A#1 (acquired on: 03/07/19 13:29:23)

Production Current	Potential	Casing Pressure	Producing
Oil: -*-	-*- BBL/D	5.2 psi (g)	Annular Gas Flow
Water: -*-	-*- BBL/D	Casing Pressure Buildup: 0.363 psi	% Liquid: 68 %
Gas: -*-	-*- Msc/D	1.50 min	
IPR Method: PBHP/SBHP	Veget: -*-	Gas/Liquid Interface Pressure: 8.7 psi (g)	
Production Efficiency: 0.0			
Oil: 40 deg API		Liquid Level Depth: 5082.26 ft	Pump Intake: 93.2 psi (g)
Water: 1.05 Sp.Gr./120		Pump Intake Depth: 5426.00 ft	Producing BHP: 79.8 psi (g)
Gas: 0.94 Sp.Gr./AIR		Formation Depth: 5387.00 ft	Static BHP: -* psi (g)
Acoustic Velocity: 1040.81 ft/s			

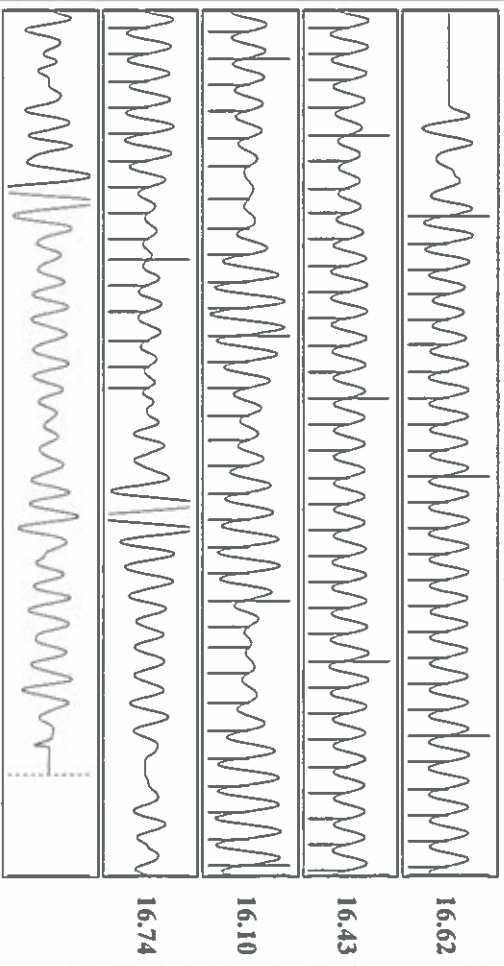


Group: Garden City Rt 6 Well: Weeks Farm A#1 (acquired on: 03/07/19 13:29:23)



Change in Pressure: 0.36 psi
Change in Time: 1.50 min
PT114679 Range
0 - 1 psi

Group: Garden City Rt 6 Well: Weeks Farm A#1 (acquired on: 03/07/19 13:29:23)



Acoustic Velocity: 1040.81 ft/s
Joints Per Second: 16.4165 JIS/sec
Depth to liquid level: 5082.26 ft
Automatic Collar Count: Yes

Joints counted: 105
Joints to liquid level: 13.3374
Filter Width: 17.3374
Time to 1st Collar: 6.872

Conservation Division
District Office No. 1
210 E. Frontview, Suite A
Dodge City, KS 67801



Phone: 620-682-7933
<http://kcc.ks.gov/>

Dwight D. Keen, Chair
Shari Feist Albrecht, Commissioner
Jay Scott Emler, Commissioner

Laura Kelly, Governor

March 19, 2019

Katherine McClurkan
Merit Energy Company, LLC
13727 NOEL ROAD, SUITE 1200
DALLAS, TX 75240

Re: Temporary Abandonment
API 15-081-21408-00-00
WEEKS FARMS A 1
SW/4 Sec.11-30S-34W
Haskell County, Kansas

Dear Katherine McClurkan:

"Your temporary abandonment (TA) application for the well listed above has been approved. In accordance with K.A.R. 82-3-111 the TA status of this well will expire 03/19/2020.

- * If you return this well to service or plug it, please notify the District Office.
- * If you sell this well you are required to file a Transfer of Operator form, T-1.
- * If the well will remain temporarily abandoned, you must submit a new TA application, CP-111, before 03/19/2020.

You may contact me at the number above if you have questions.

Very truly yours,

Michael Maier"