

KANSAS CORPORATION COMMISSION
OIL & GAS CONSERVATION DIVISION

TEMPORARY ABANDONMENT WELL APPLICATION

OPERATOR: License#
Name:
Address 1:
Address 2:
City: State: Zip:
Contact Person:
Phone:
Contact Person Email:
Field Contact Person:
Field Contact Person Phone:

API No. 15-
Spot Description:
Sec. Twp. S. R.
GPS Location: Lat: Long:
Datum: NAD27 NAD83 WGS84
County: Elevation:
Lease Name: Well #:
Well Type: Oil Gas OG WSW Other:
SWD Permit #: ENHR Permit #:
Gas Storage Permit #:
Spud Date: Date Shut-In:

Table with 7 columns: Conductor, Surface, Production, Intermediate, Liner, Tubing. Rows include Size, Setting Depth, Amount of Cement, Top of Cement, Bottom of Cement.

Casing Fluid Level from Surface: How Determined? Date:
Casing Squeeze(s): to w / sacks of cement, to w / sacks of cement. Date:
Do you have a valid Oil & Gas Lease? Yes No
Depth and Type: Junk in Hole at Tools in Hole at Casing Leaks: Yes No Depth of casing leak(s):
Type Completion: ALT. I ALT. II Depth of: DV Tool: w / sacks of cement Port Collar: w / sack of cement
Packer Type: Size: Inch Set at: Feet
Total Depth: Plug Back Depth: Plug Back Method:

Geological Data:

Table with 4 columns: Formation Name, Formation Top, Formation Base, Completion Information. Rows 1 and 2.

UNDER PENALTY OF PERJURY I HEREBY ATTEST THAT THE INFORMATION CONTAINED HEREIN IS TRUE AND CORRECT TO THE BEST OF MY KNOWLEDGE

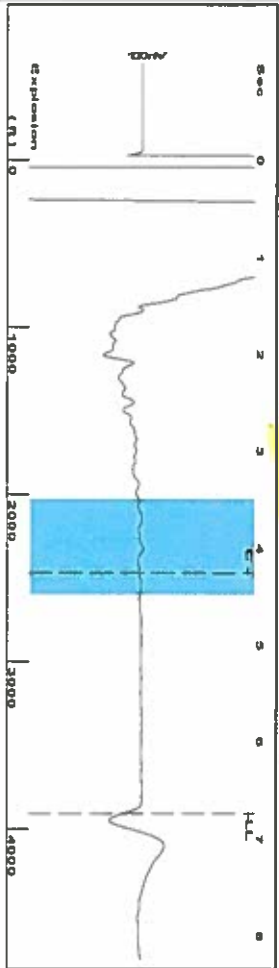
Submitted Electronically

Do NOT Write in This Space - KCC USE ONLY
Date Tested: Results: Date Plugged: Date Repaired: Date Put Back in Service:
Review Completed by: Comments:
TA Approved: Yes Denied Date:

Mail to the Appropriate KCC Conservation Office:

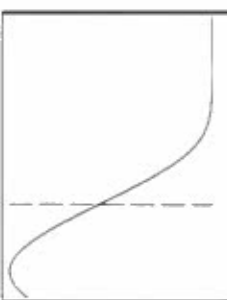
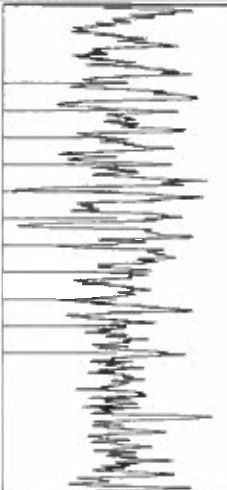
Table with 3 columns: District Office #, Address, Phone. Rows 1-4.

Group: Garden City Rt 6 Well: White #1-10 (acquired on: 03/07/19 14:35:00)



Filter Type: High Pass  
 Manual Acoustic Velocity: 148.55 ft/s  
 Automatic Collar Count: Yes  
 Manual JTS/sec: 18.1159  
 Time: 6.739 sec  
 Joints: 123.233 J/s  
 Depth: 3906.49 ft

[ 3.5 to 4.5 (Sec) ]



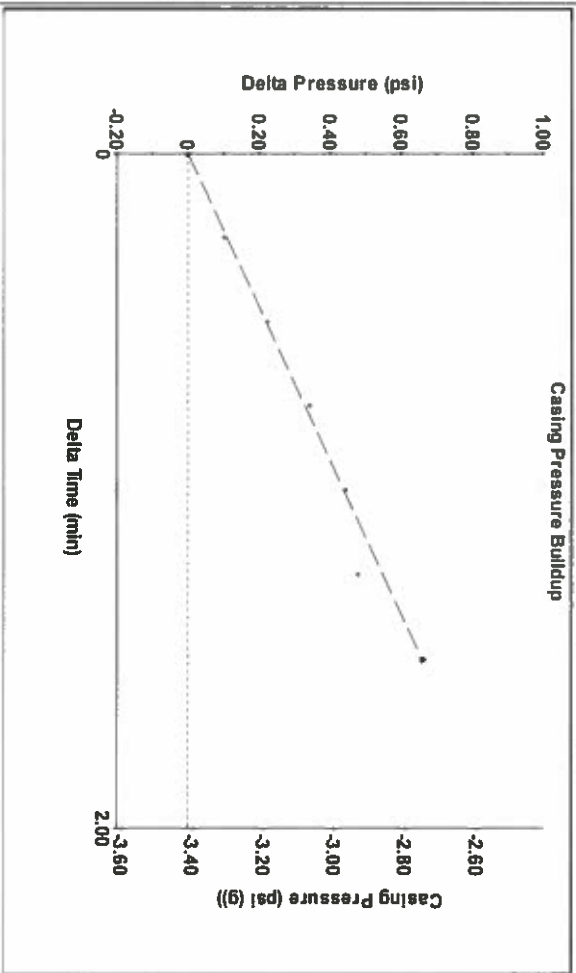
Analysis Method: Automatic

Group: Garden City Rt 6 Well: White #1-10 (acquired on: 03/07/19 14:35:00)

Production Current	Potential	Casing Pressure	Producing
Oil 15	BB/L/D	-3.4 psi (g)	Amular Gas Flow
Water 15	BB/L/D	0.661 psi	19 Mscf/D
Gas 80.0	Mscf/D	1.50 min	% Liquid 56 %
IPR Method: PBHP/SBHP	Vogel	Gas/Liquid Interface Pressure: -2.1 psi (g)	
Production Efficiency: 0.0			
Oil 40 deg API		Liquid Level Depth: 3906.49 ft	Pump Intake: 351.7 psi (g)
Water 1.05 Sp Gr: H2O		Pump Intake Depth: 5548.00 ft	Producing BHP: 262.3 psi (g)
Gas 0.82 Sp Gr: AIR		Formation Depth: 5281.00 ft	Static BHP: - * - psi (g)
Acoustic Velocity: 1159.37 ft/s			

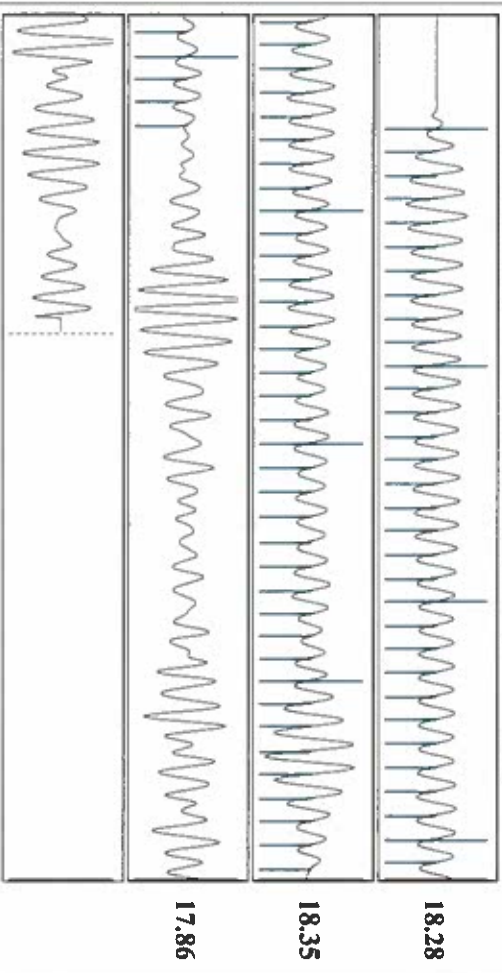


Group: Garden City Rt 6 Well: White #1-10 (acquired on: 03/07/19 14:35:00)



Change in Pressure: 0.66 psi  
 Change in Time: 1.50 min  
 PTT14679 Range  
 0 - ? psi

Group: Garden City Rt 6 Well: White #1-10 (acquired on: 03/07/19 14:35:00)



Acoustic Velocity: 1159.37 ft/s  
 Joints Per Second: 18.2866 jts/sec  
 Depth to liquid level: 3906.49 ft  
 Automatic Collar Count: Yes

Joints counted: 73  
 Joints to liquid level: 123.233  
 Filter Width: 16.1159  
 Time to 1st Collar: 0.264

Conservation Division  
District Office No. 1  
210 E. Frontview, Suite A  
Dodge City, KS 67801



Phone: 620-682-7933  
<http://kcc.ks.gov/>

Dwight D. Keen, Chair  
Shari Feist Albrecht, Commissioner  
Jay Scott Emler, Commissioner

Laura Kelly, Governor

March 19, 2019

Katherine McClurkan  
Merit Energy Company, LLC  
13727 NOEL ROAD, SUITE 1200  
DALLAS, TX 75240

Re: Temporary Abandonment  
API 15-081-20260-00-01  
WHITE 1-10  
SE/4 Sec.10-29S-34W  
Haskell County, Kansas

Dear Katherine McClurkan:

"Your temporary abandonment (TA) application for the well listed above has been approved. In accordance with K.A.R. 82-3-111 the TA status of this well will expire 03/19/2020.

- \* If you return this well to service or plug it, please notify the District Office.
- \* If you sell this well you are required to file a Transfer of Operator form, T-1.
- \* If the well will remain temporarily abandoned, you must submit a new TA application, CP-111, before 03/19/2020.

You may contact me at the number above if you have questions.

Very truly yours,

Michael Maier"