

KANSAS CORPORATION COMMISSION
OIL & GAS CONSERVATION DIVISION

Form must be Typed
Form must be signed

TEMPORARY ABANDONMENT WELL APPLICATION

All blanks must be complete

OPERATOR: License#
Name:
Address 1:
Address 2:
City: State: Zip:
Contact Person:
Phone:
Contact Person Email:
Field Contact Person:
Field Contact Person Phone:

API No. 15-
Spot Description:
Sec. Twp. S. R.
feet from N / S Line of Section
feet from E / W Line of Section
GPS Location: Lat: , Long:
Datum: NAD27 NAD83 WGS84
County: Elevation: GL KB
Lease Name: Well #:
Well Type: (check one) Oil Gas OG WSW Other:
SWD Permit #: ENHR Permit #:
Gas Storage Permit #:
Spud Date: Date Shut-In:

Table with 7 columns: Conductor, Surface, Production, Intermediate, Liner, Tubing. Rows include Size, Setting Depth, Amount of Cement, Top of Cement, Bottom of Cement.

Casing Fluid Level from Surface: How Determined? Date:
Casing Squeeze(s): to w / sacks of cement, to w / sacks of cement. Date:
Do you have a valid Oil & Gas Lease? Yes No
Depth and Type: Junk in Hole at Tools in Hole at Casing Leaks: Yes No Depth of casing leak(s):
Type Completion: ALT. I ALT. II Depth of: DV Tool: w / sacks of cement Port Collar: w / sack of cement
Packer Type: Size: Inch Set at: Feet
Total Depth: Plug Back Depth: Plug Back Method:

Geological Data:

Table with 4 columns: Formation Name, Formation Top, Formation Base, Completion Information. Rows 1 and 2.

UNDER PENALTY OF PERJURY I HEREBY ATTEST THAT THE INFORMATION CONTAINED HEREIN IS TRUE AND CORRECT TO THE BEST OF MY KNOWLEDGE

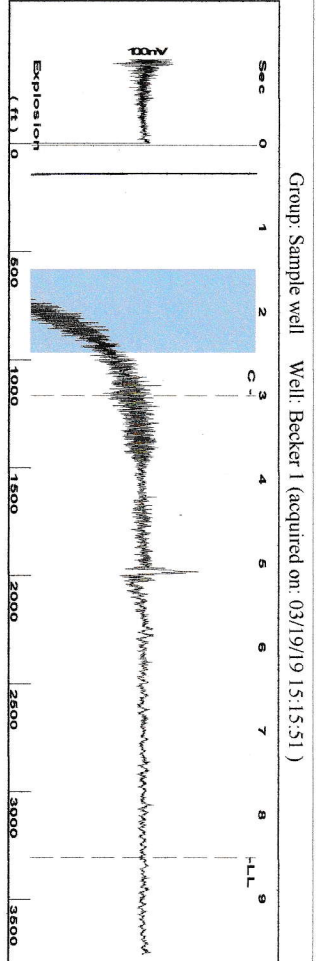
Submitted Electronically

Form with fields: Do NOT Write in This Space - KCC USE ONLY, Date Tested, Results, Date Plugged, Date Repaired, Date Put Back in Service, Review Completed by, Comments, TA Approved: Yes Denied, Date.

Mail to the Appropriate KCC Conservation Office:

Table with 2 columns: Office Address, Phone. Rows for KCC District Office #1, #2, #3, #4.

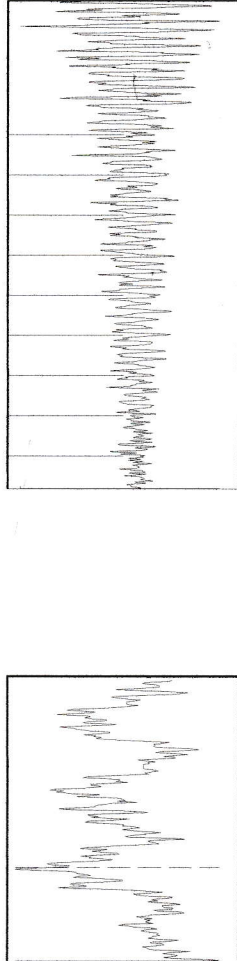
*Cambria Corporation
Becker Trust #1, API 15-145-21515-00-00, Sec. 32-23-15, Prairie County*



Filter Type High Pass Automatic Collar Count Yes
Manual Acoustic Velo 769.417 ft/s Manual JTS/sec 12.1359

Time 8.5 sec
Joints 104.198 Jts
Depth 3303.06 ft

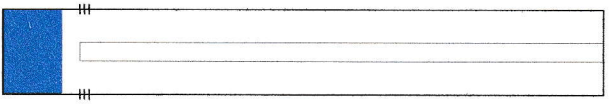
| 1.5 to 2.5 (Sec) |



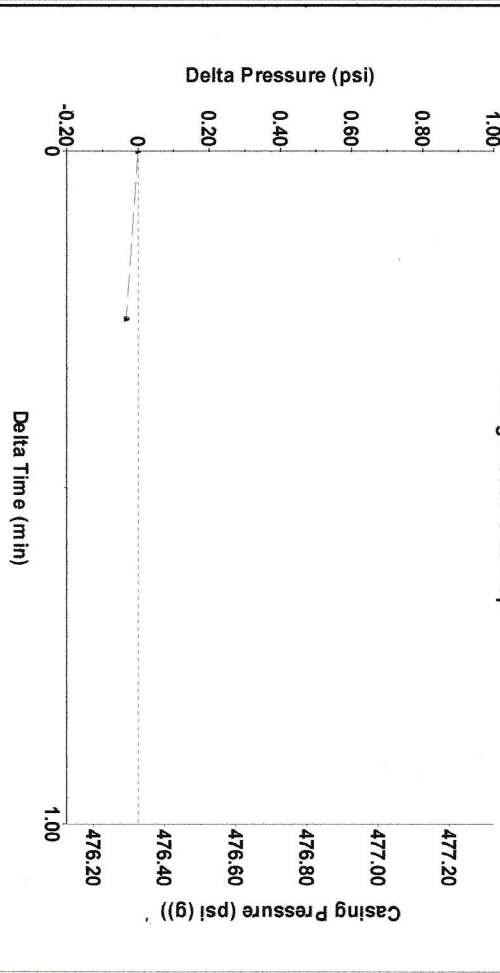
Analysis Method: Automatic

Group: Sample well Well: Becker 1 (acquired on: 03/19/19 15:15:51)

Production	Potential	Casing Pressure	Static
Current	-* - BBL/D	476.3 psi (g)	Static
Oil	-* - BBL/D		Oil Column Height
Water	-* - BBL/D	Casing Pressure Buildup	MD 0 ft
Gas	-* - Mscf/D	-0.034 psi	
		0.25 min	
IPR Method	Vogel	Gas/Liquid Interface Pressure	
PBHP/SBHP	-* -	577.1 psi (g)	
Production Efficiency	0.0		
Oil 40 deg API		Liquid Level Depth	Water Column Height
Water 1.05 Sp.Gr:H2O		3303.06 ft	MD -* - ft
Gas 1.08 Sp.Gr:AIR		Tubing Intake Depth	
		3187.00 ft	
Acoustic Velocity	777.192 ft/s	Formation Depth	
		3156.00 ft	
Acoustic Test		Static BHP	553.7 psi (g)

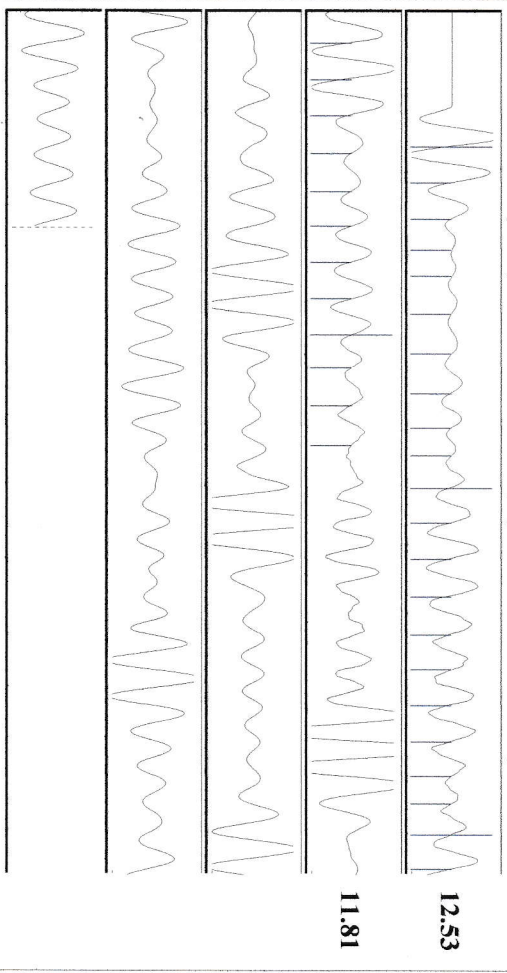


Group: Sample well Well: Becker 1 (acquired on: 03/19/19 15:15:51)



Change in Pressure -0.03 psi PT 10619
Change in Time 0.25 min Range 0 - ? psi

Group: Sample well Well: Becker 1 (acquired on: 03/19/19 15:15:51)



Acoustic Velocity	777.192 ft/s	Joints counted	33
Joints Per Second	12.2585 jts/sec	Joints to liquid level	104.198
Depth to liquid level	3303.06 ft	Filter Width	10.1359
Automatic Collar Count	Yes	Time to 1st Collar	0.312
			3.004

Conservation Division
District Office No. 1
210 E. Frontview, Suite A
Dodge City, KS 67801



Phone: 620-682-7933
<http://kcc.ks.gov/>

Dwight D. Keen, Chair
Shari Feist Albrecht, Commissioner
Jay Scott Emler, Commissioner

Laura Kelly, Governor

March 26, 2019

LINDA DOUGHERTY
Cambria Corporation
3716 10TH ST
PO BOX 1065
GREAT BEND, KS 67530-1065

Re: Temporary Abandonment
API 15-145-21515-00-00
BECKER TRUST 1
NW/4 Sec.32-23S-15W
Pawnee County, Kansas

Dear LINDA DOUGHERTY:

"Your temporary abandonment (TA) application for the well listed above has been approved. In accordance with K.A.R. 82-3-111 the TA status of this well will expire 03/26/2020.

- * If you return this well to service or plug it, please notify the District Office.
- * If you sell this well you are required to file a Transfer of Operator form, T-1.
- * If the well will remain temporarily abandoned, you must submit a new TA application, CP-111, before 03/26/2020.

You may contact me at the number above if you have questions.

Very truly yours,

Michael Maier"