

KANSAS CORPORATION COMMISSION
OIL & GAS CONSERVATION DIVISION

TEMPORARY ABANDONMENT WELL APPLICATION

OPERATOR: License#
Name:
Address 1:
Address 2:
City: State: Zip:
Contact Person:
Phone:
Contact Person Email:
Field Contact Person:
Field Contact Person Phone:

API No. 15-
Spot Description:
Sec. Twp. S. R.
GPS Location: Lat: Long:
Datum: NAD27 NAD83 WGS84
County: Elevation:
Lease Name: Well #:
Well Type: Oil Gas OG WSW Other:
SWD Permit #: ENHR Permit #:
Gas Storage Permit #:
Spud Date: Date Shut-In:

Table with 7 columns: Conductor, Surface, Production, Intermediate, Liner, Tubing. Rows include Size, Setting Depth, Amount of Cement, Top of Cement, Bottom of Cement.

Casing Fluid Level from Surface: How Determined? Date:
Casing Squeeze(s): to w / sacks of cement, to w / sacks of cement. Date:
Do you have a valid Oil & Gas Lease? Yes No
Depth and Type: Junk in Hole at Tools in Hole at Casing Leaks: Yes No Depth of casing leak(s):
Type Completion: ALT. I ALT. II Depth of: DV Tool: w / sacks of cement Port Collar: w / sack of cement
Packer Type: Size: Inch Set at: Feet
Total Depth: Plug Back Depth: Plug Back Method:

Geological Data:

Table with 4 columns: Formation Name, Formation Top, Formation Base, Completion Information. Rows 1 and 2.

UNDER PENALTY OF PERJURY I HEREBY ATTEST THAT THE INFORMATION CONTAINED HEREIN IS TRUE AND CORRECT TO THE BEST OF MY KNOWLEDGE

Submitted Electronically

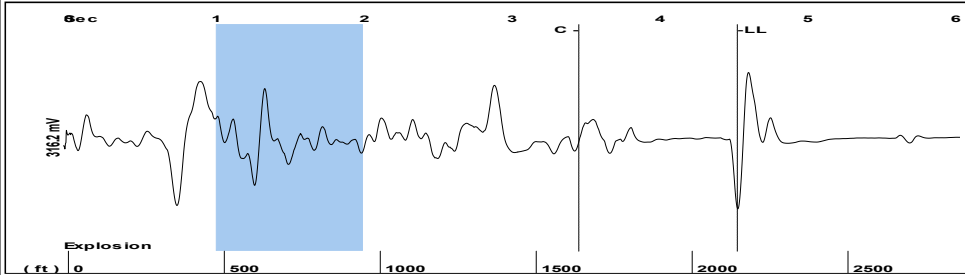
Form with fields: Do NOT Write in This Space - KCC USE ONLY, Date Tested, Results, Date Plugged, Date Repaired, Date Put Back in Service, Review Completed by, Comments, TA Approved: Yes Denied, Date.

Mail to the Appropriate KCC Conservation Office:

Table with 2 columns: Office Address, Phone. Rows for KCC District Office #1, #2, #3, #4.

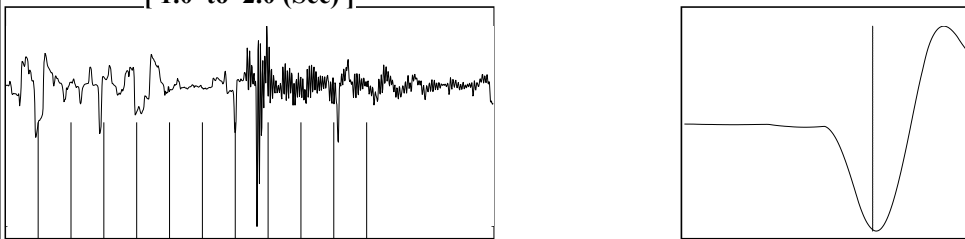


Group: MyWells Well: Walker-A # 1-35 (acquired on: 03/11/19 09:08:26)



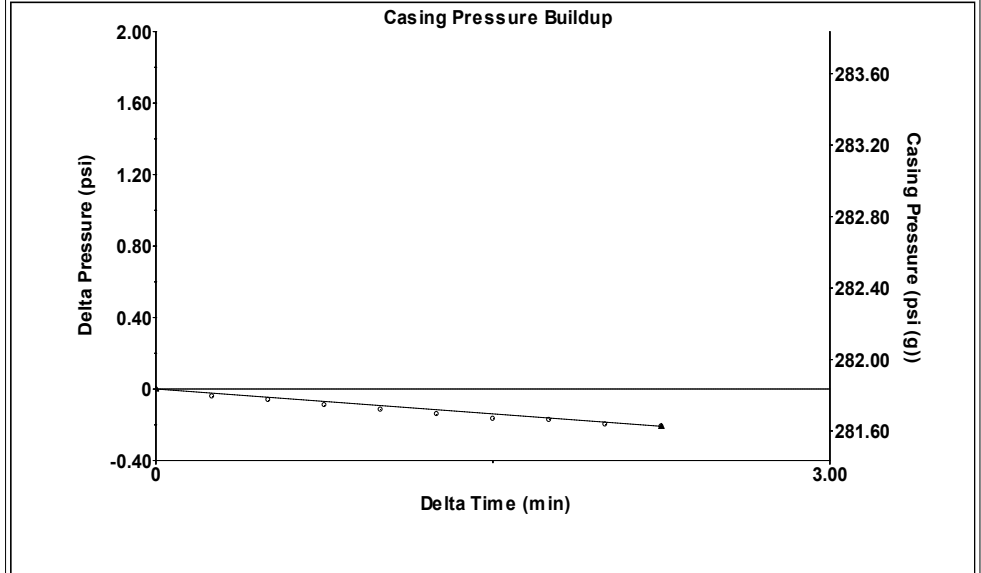
Filter Type High Pass Automatic Collar Count Yes Time 4.524 sec  
 Manual Acoustic Veloc 940.95 ft/s Manual JTS/sec 14.8368 Joints 67.6298 Jts  
 Depth 2144.54 ft

[ 1.0 to 2.0 (Sec) ]



**Analysis Method: Automatic**

Group: MyWells Well: Walker-A # 1-35 (acquired on: 03/11/19 09:08:26)

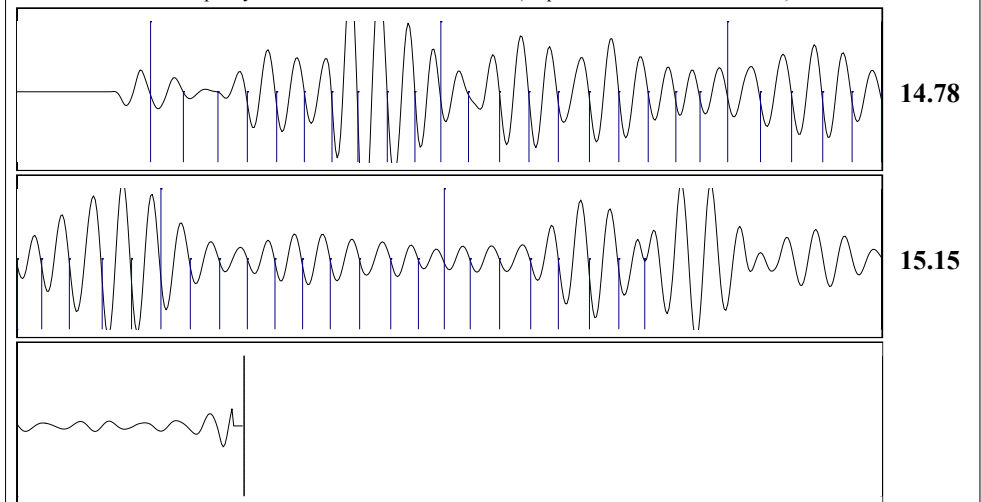


Change in Pressure -0.21 psi PT12865  
 Change in Time 2.25 min Range 0 - ? psi

Group: MyWells Well: Walker-A # 1-35 (acquired on: 03/11/19 09:08:26)

<b>Production</b>					
Current	Potential	Casing Pressure	281.8 psi (g)	Producing	
Oil - *	- * - BBL/D	Casing Pressure Buildup	-0.209 psi	Annular Gas Flow	0 Mscf/D
Water - *	- * - BBL/D		2.25 min	% Liquid	100 %
Gas - *	- * - Mscf/D	Gas/Liquid Interface Pressure	305.7 psi (g)		
IPR Method	Vogel	Liquid Level Depth	2144.54 ft	Pump Intake	483.2 psi (g)
PBHP/SBHP	- * -	Pump Intake Depth	2682.00 ft	Producing BHP	483.2 psi (g)
Production Efficiency	0.0	Formation Depth	2682.00 ft	Static BHP	- * - psi (g)
Oil 40 deg.API					
Water 1.05 Sp.Gr.H2O					
Gas 0.97 Sp.Gr.AIR					
Acoustic Velocity	948.073 ft/s				
Formation Submergence					
Total Gaseous Liquid Column HT (TVD)	537 ft				
Equivalent Gas Free Liquid HT (TVD)	537 ft				
Acoustic Test					

Group: MyWells Well: Walker-A # 1-35 (acquired on: 03/11/19 09:08:26)



Acoustic Velocity 948.073 ft/s Joints counted 47  
 Joints Per Second 14.9491 jts/sec Joints to liquid level 67.6298  
 Depth to liquid level 2144.54 ft Filter Width 12.8368 16.8368  
 Automatic Collar Count Yes Time to 1st Collar 0.308 3.452

Conservation Division  
District Office No. 1  
210 E. Frontview, Suite A  
Dodge City, KS 67801



Phone: 620-682-7933  
<http://kcc.ks.gov/>

Dwight D. Keen, Chair  
Shari Feist Albrecht, Commissioner  
Jay Scott Emler, Commissioner

Laura Kelly, Governor

April 02, 2019

Melody C. Fletcher  
Oil Producers, Inc. of Kansas  
1710 N Waterfront Pkwy  
WICHITA, KS 67206-6603

Re: Temporary Abandonment  
API 15-175-21846-00-00  
WALKER 1A-35  
NW/4 Sec.35-32S-32W  
Seward County, Kansas

Dear Melody C. Fletcher:

"Your temporary abandonment (TA) application for the well listed above has been approved. In accordance with K.A.R. 82-3-111 the TA status of this well will expire 04/02/2020.

- \* If you return this well to service or plug it, please notify the District Office.
- \* If you sell this well you are required to file a Transfer of Operator form, T-1.
- \* If the well will remain temporarily abandoned, you must submit a new TA application, CP-111, before 04/02/2020.

You may contact me at the number above if you have questions.

Very truly yours,

Michael Maier"