

KANSAS CORPORATION COMMISSION
OIL & GAS CONSERVATION DIVISION

TEMPORARY ABANDONMENT WELL APPLICATION

OPERATOR: License# _____
 Name: _____
 Address 1: _____
 Address 2: _____
 City: _____ State: _____ Zip: _____ + _____
 Contact Person: _____
 Phone: (_____) _____
 Contact Person Email: _____
 Field Contact Person: _____
 Field Contact Person Phone: (_____) _____

API No. 15- _____
 Spot Description: _____
 _____ - _____ - _____ - _____ Sec. _____ Twp. _____ S. R. _____ E W
 _____ feet from N / S Line of Section
 _____ feet from E / W Line of Section
 GPS Location: Lat: _____, Long: _____
(e.g. xx.xxxxx) (e.g. -xxx.xxxxx)
 Datum: NAD27 NAD83 WGS84
 County: _____ Elevation: _____ GL KB
 Lease Name: _____ Well #: _____
 Well Type: (check one) Oil Gas OG WSW Other: _____
 SWD Permit #: _____ ENHR Permit #: _____
 Gas Storage Permit #: _____
 Spud Date: _____ Date Shut-In: _____

	Conductor	Surface	Production	Intermediate	Liner	Tubing
Size						
Setting Depth						
Amount of Cement						
Top of Cement						
Bottom of Cement						

Casing Fluid Level from Surface: _____ How Determined? _____ Date: _____
 Casing Squeeze(s): _____ to _____ w / _____ sacks of cement, _____ to _____ w / _____ sacks of cement. Date: _____
(top) (bottom) (top) (bottom)
 Do you have a valid Oil & Gas Lease? Yes No
 Depth and Type: Junk in Hole at _____ Tools in Hole at _____ Casing Leaks: Yes No Depth of casing leak(s): _____
(depth) (depth)
 Type Completion: ALT. I ALT. II Depth of: DV Tool: _____ w / _____ sacks of cement Port Collar: _____ w / _____ sack of cement
(depth) (depth)
 Packer Type: _____ Size: _____ Inch Set at: _____ Feet
 Total Depth: _____ Plug Back Depth: _____ Plug Back Method: _____

Geological Data:

Formation Name	Formation Top	Formation Base	Completion Information
1. _____	At: _____	to _____ Feet	Perforation Interval _____ to _____ Feet or Open Hole Interval _____ to _____ Feet
2. _____	At: _____	to _____ Feet	Perforation Interval _____ to _____ Feet or Open Hole Interval _____ to _____ Feet

UNDER PENALTY OF PERJURY I HEREBY ATTEST THAT THE INFORMATION CONTAINED HEREIN IS TRUE AND CORRECT TO THE BEST OF MY KNOWLEDGE

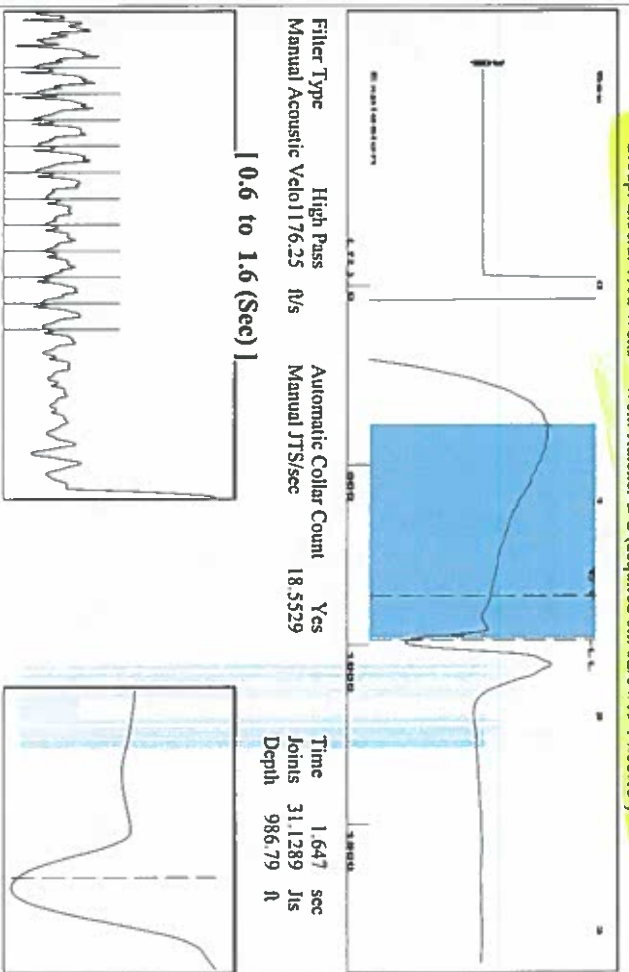
Submitted Electronically

Do NOT Write in This Space - KCC USE ONLY	Date Tested: _____	Results: _____	Date Plugged: _____	Date Repaired: _____	Date Put Back in Service: _____
	Review Completed by: _____ Comments: _____				
TA Approved: <input type="checkbox"/> Yes <input type="checkbox"/> Denied Date: _____					

Mail to the Appropriate KCC Conservation Office:

	KCC District Office #1 - 210 E. Frontview, Suite A, Dodge City, KS 67801	Phone 620.682.7933
	KCC District Office #2 - 3450 N. Rock Road, Building 600, Suite 601, Wichita, KS 67226	Phone 316.337.7400
	KCC District Office #3 - 137 E. 21st St., Chanute, KS 66720	Phone 620.902.6450
	KCC District Office #4 - 2301 E. 13th Street, Hays, KS 67601-2651	Phone 785.261.6250

Group: Liberal TAVd Wells Well: Hatcher B-2 (acquired on: 02/04/19 14:08:15)



Filter Type High Pass Automatic Collar Count Yes
 Manual Acoustic Velo 1176.25 ft/s Manual JTS/sec 18.5529
 Time 1.647 sec
 Joints 31.1289 Jis
 Depth 986.79 ft

0.6 to 1.6 (Sec) |

Analysis Method: Automatic

Group: Liberal TAVd Wells Well: Hatcher B-2 (acquired on: 02/04/19 14:08:15)

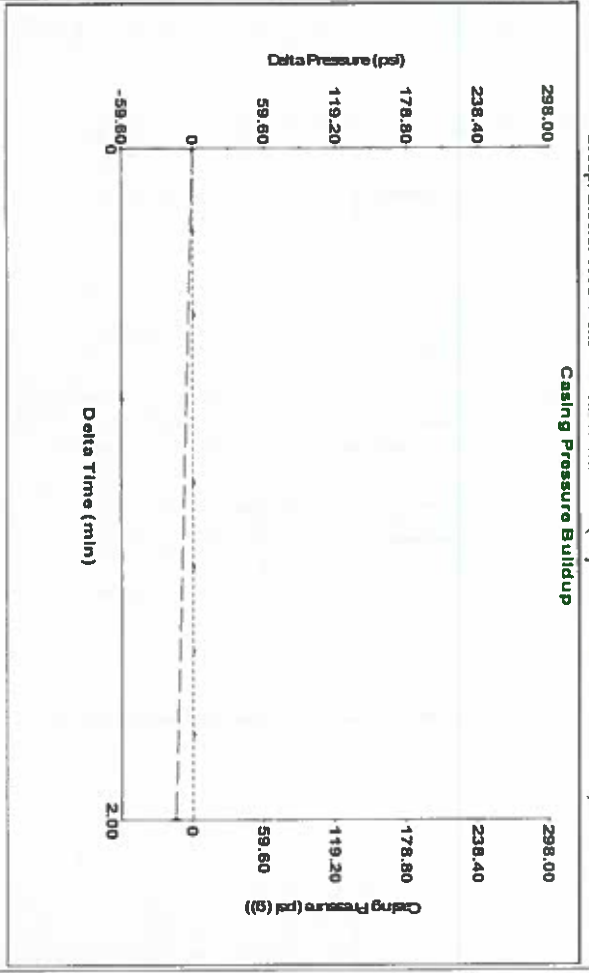
Production	Current	Potential	Casing Pressure	Static
Oil	-*-	-**	0.8 psi (g)	Oil Column Height MD 0 ft
Water	-*-	-**	Casing Pressure Buildup -14.312 psi	Water Column Height MD 5633 ft
Gas	-*-	-**	2.00 min	Static BHP 2562.3 psi (g)
IPR Method		Vogel	Gas/Liquid Interface Pressure 1.2 psi (g)	
PBHP/SBHP			Liquid Level Depth 986.79 ft	
Production Efficiency			Pump Intake Depth 6575.00 ft	
Oil 40 deg API			Formation Depth 6620.00 ft	
Water 1.05 Sp.Gr.H2O				
Gas 0.77 Sp.Gr.AIR				
Acoustic Velocity				



Acoustic Test

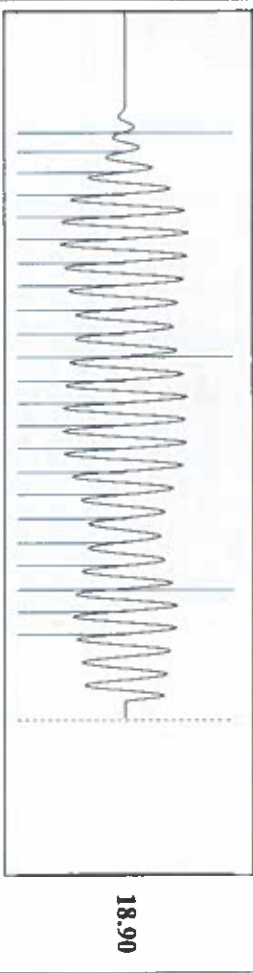
Shot @ 3:00 PM

Group: Liberal TAVd Wells Well: Hatcher B-2 (acquired on: 02/04/19 14:08:15)



Change in Pressure -14.31 psi PTT11249
 Change in Time 2.00 min Range 0 - 7 psi

Group: Liberal TAVd Wells Well: Hatcher B-2 (acquired on: 02/04/19 14:08:15)



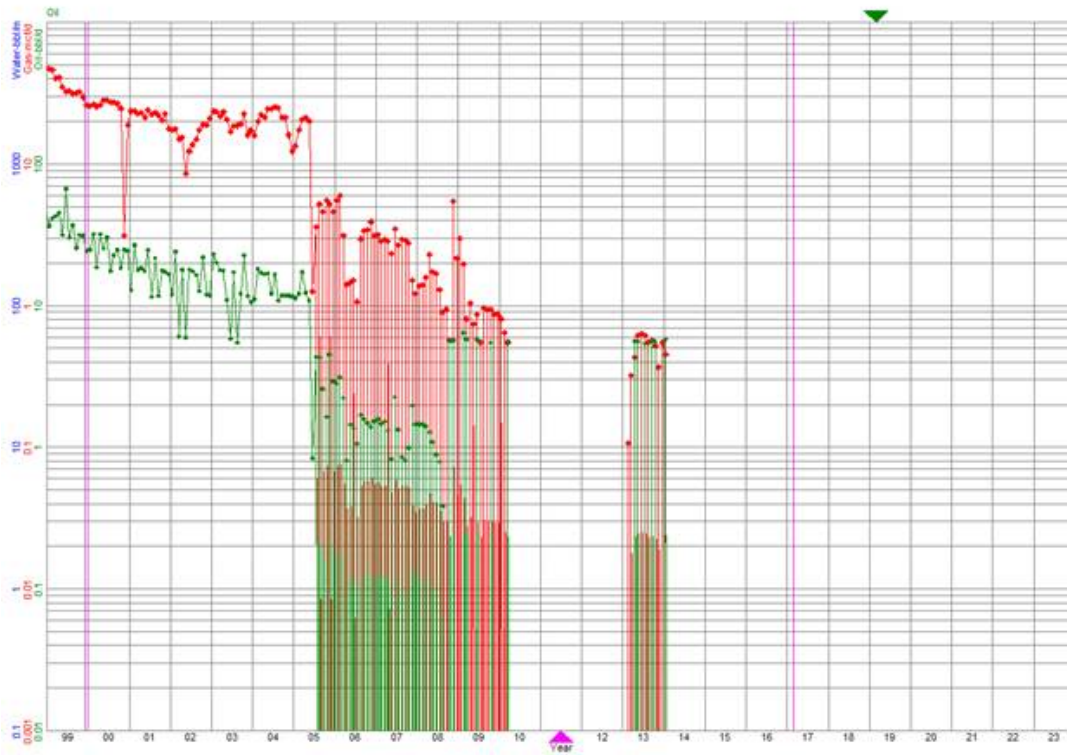
Acoustic Velocity 1198.28 ft/s Joints counted 22
 Joints Per Second 18.9003 Jis/sec Joints to liquid level 31.1289
 Depth to liquid level 986.785 ft Filter Width 16.5529
 Automatic Collar Count Yes Time to 1st Collar 0.28

Hatcher B-2 (15-175-21714)

Sec 23 T33S-R32W

Seward, Kansas

Production



HATCHER B-2 | HATCHER B 21B-21ST LOUIS | OPI1PSI | WIDEAWAKE | KS | Rate/Time

1. Division: MIDCON DIVISION 2. Regen: SOUTH HUGOTON REGION 3. Office: Show All Values 4. Accounting Code: Show All Values

5. Tax Group: Show All Values 6. Field Group: Show All Values 7. Property Case: Show All Values 8. Cost Center: 1000/1001032500 HATC...

9. GL Account: Show All Values Activity Month: JAN 2013 - JAN 2014... Fiscal year/period: Show All Values Project Number: Show All Values

Project Type: Show All Values WBS Element: Show All Values z LOS - Gross Summary: Show All Values

Close

Activity Month	DEC 2013	JAN 2014	FEB 2014	MAR 2014	APR 2014	MAY 2014	JUN 2014	JUL 2014	AUG 2014	SEP 2014	OCT 2014	NOV 2014	DEC 2014	Overall Result
▼ Sales	5	362	7	341	6	324	3	179	172	6	7	174	354	3,689
• Gross Oil Volume	BBL	357		334		320		175	168			168	349	3,575
• Gross Gas Volume	MCF	30	27	25	21	22	14	13	15	15	22	25	20	27
• Gross NGL Volume	BBL			3	3	3	2	1	2	2	3	3	3	25
• Gross Other Volume														
• Total Gross		5	362	7	341	6	324	3	179	172	6	7	174	3,689
• Total Gross (BOEPD)		0	12	0	11	0	11	0	6	6	0	0	6	121
• Oil Price	\$ / BBL	89.89			95.56		98.66		99.26	93.49			72.48	89.72
• Gas Price	\$ / MCF	4.68	5.96	-17.58	-22.79	-22.11	-30.46	-42.23	-33.87	-35.96	-23.28	-19.76	-25.24	-7.60
• NGL Price	\$ / BBL			53.95	47.26	48.40	46.35	40.74	47.20	44.57	46.27	40.99	37.05	26.00
• Nymex Oil Price	\$	97.89	94.86	100.68	100.51	102.03	101.79	105.15	102.39	96.06	93.03	84.34	75.81	59.29
• Nymex Gas Price	\$	3.82	4.41	5.56	4.86	4.58	4.80	4.62	4.40	3.81	3.96	3.96	3.73	4.28
• Oil Nymex Differential		-97.89	-5.17	-100.68	-3.95	-102.03	-3.13	-105.15	-3.13	-2.59	-93.03	-84.34	-3.35	-4.36
• Gas Nymex Differential		0.86	1.55	-23.14	-27.85	-26.69	-41.26	-46.85	-36.27	-39.77	-27.24	-23.74	-28.97	-21.72
► Revenue	\$	548	32,223	-275	31,934	-353	31,102	-468	16,931	15,241	-374	-363	11,771	18,717
▼ Gross LOE	\$	4,995	4,871	4,731	5,389	12,268	6,345	4,456	4,775	4,388	4,988	5,293	5,285	8,768
• Gross Labor	\$	432	440	419	1,512	1,548	1,661	1,289	1,096	604	755	859	2,162	21,489
• Gross Fuel	\$	2,067	1,973	1,775	1,871	1,789	1,427	955	1,500	1,487	1,604	1,539	1,376	41,524
• Gross Insurance	\$	100	102	117	176	30	30	30	25	36	36	36	32	1,901
• Gross Non - Operated														
• Gross Field Office	\$	210	159	146	140	150	176	172	162	169	200	169	212	3,814
► Gross Operations	\$	2,060	2,166	2,210	1,643	8,743	3,039	1,990	1,969	1,905	2,348	2,615	2,425	74,226
• Gross Plant/Marketing	\$			41										54
• Gross Other LOE	\$	121	22	23	39	2	4	12	40	27	37	41	301	209
► Expense Workover														
• Gross Plant Operating Expense														
• Gross Operating Overhead Expense														
► Capital Expenditure	\$													15,960
• Gross Plug and Abandon Costs														
• Gross Production Tax	\$	6	1,427	0	1,427	0	1,395	0	760	695	0	0	16	12,915
• Gross Aid Valorem Costs	\$	3,396	247											5,147
• LOE per BOE	\$	991.45	13.45	665.22	15.81	1,968.10	19.59	1,284.22	26.62	25.03	767.95	735.51	29.85	24.77
• EWD per BOE														

Conservation Division
District Office No. 1
210 E. Frontview, Suite A
Dodge City, KS 67801



Phone: 620-682-7933
<http://kcc.ks.gov/>

Dwight D. Keen, Chair
Shari Feist Albrecht, Commissioner
Jay Scott Emler, Commissioner

Laura Kelly, Governor

March 26, 2019

Katherine McClurkan
Merit Energy Company, LLC
13727 Noel Road Suite1200
Dallas, TX 75240

Re: Temporary Abandonment
API 15-175-21714-00-00
Hatcher B 2
NW/4 Sec.35-34S-34W
Seward County, Kansas

Dear Katherine McClurkan:

"Your temporary abandonment (TA) application for the well listed above has been approved. In accordance with K.A.R. 82-3-111 the TA status of this well will expire 03/26/2020.

- * If you return this well to service or plug it, please notify the District Office.
- * If you sell this well you are required to file a Transfer of Operator form, T-1.
- * If the well will remain temporarily abandoned, you must submit a new TA application, CP-111, before 03/26/2020.

You may contact me at the number above if you have questions.

Very truly yours,

Michael Maier"