

KANSAS CORPORATION COMMISSION
OIL & GAS CONSERVATION DIVISION

TEMPORARY ABANDONMENT WELL APPLICATION

OPERATOR: License#
Name:
Address 1:
Address 2:
City: State: Zip:
Contact Person:
Phone:
Contact Person Email:
Field Contact Person:
Field Contact Person Phone:

API No. 15-
Spot Description:
Sec. Twp. S. R.
GPS Location: Lat: Long:
Datum: NAD27 NAD83 WGS84
County: Elevation:
Lease Name: Well #:
Well Type: Oil Gas OG WSW Other:
SWD Permit #: ENHR Permit #:
Gas Storage Permit #:
Spud Date: Date Shut-In:

Table with 7 columns: Conductor, Surface, Production, Intermediate, Liner, Tubing. Rows include Size, Setting Depth, Amount of Cement, Top of Cement, Bottom of Cement.

Casing Fluid Level from Surface: How Determined? Date:
Casing Squeeze(s): to w / sacks of cement, to w / sacks of cement. Date:
Do you have a valid Oil & Gas Lease? Yes No
Depth and Type: Junk in Hole at Tools in Hole at Casing Leaks: Yes No Depth of casing leak(s):
Type Completion: ALT. I ALT. II Depth of: DV Tool: w / sacks of cement Port Collar: w / sack of cement
Packer Type: Size: Inch Set at: Feet
Total Depth: Plug Back Depth: Plug Back Method:

Geological Data:

Table with 4 columns: Formation Name, Formation Top, Formation Base, Completion Information. Rows 1 and 2.

UNDER PENALTY OF PERJURY I HEREBY ATTEST THAT THE INFORMATION CONTAINED HEREIN IS TRUE AND CORRECT TO THE BEST OF MY KNOWLEDGE

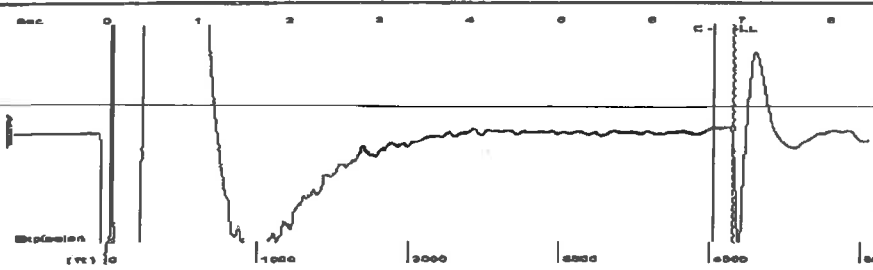
Submitted Electronically

Do NOT Write in This Space - KCC USE ONLY
Date Tested: Results: Date Plugged: Date Repaired: Date Put Back in Service:
Review Completed by: Comments:
TA Approved: Yes Denied Date:

Mail to the Appropriate KCC Conservation Office:

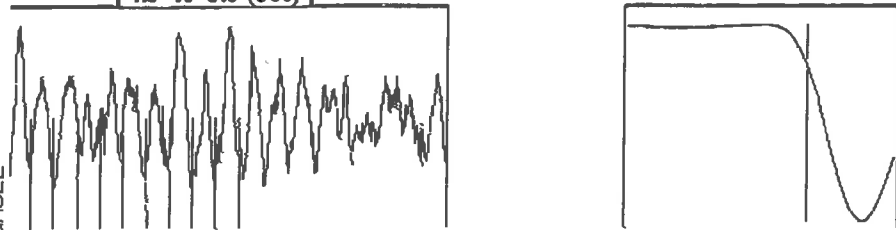
Table with 3 columns: District Office, Address, Phone. Rows for District Office #1, #2, #3, #4.

Group: Belpre Well: Breasing B 4-12 (acquired on: 04/09/19 13:59:33)



Filter Type High Pass Automatic Collar Count Yes Time 6.922 sec  
 Manual Acoustic Velocity 1272.84 ft/s Manual JTS/sec 20.1207 Joints 131.294 J/s  
 Depth 4152.83 ft

[ 4.5 to 5.5 (Sec) ]

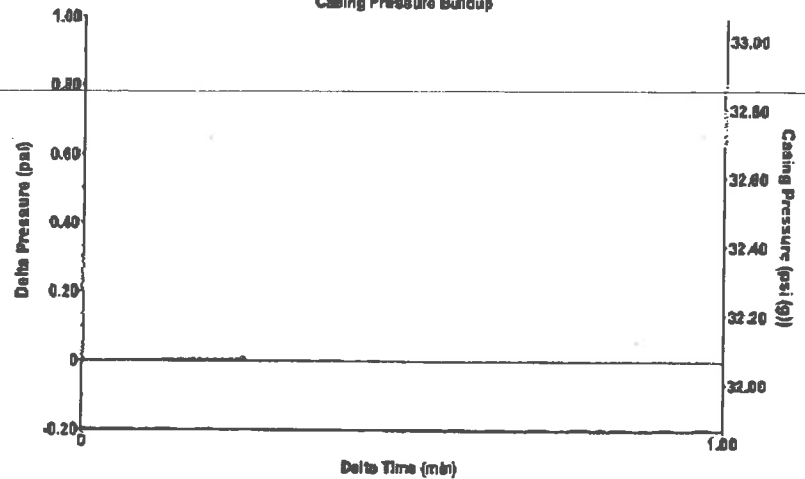


Analysis Method: Automatic

FGHOLL

Group: Belpre Well: Breasing B 4-12 (acquired on: 04/09/19 13:59:33)

Casing Pressure Buildup



Change in Pressure 0.01 psi PT13440  
 Change in Time 0.25 min Range 0 - 7 psi

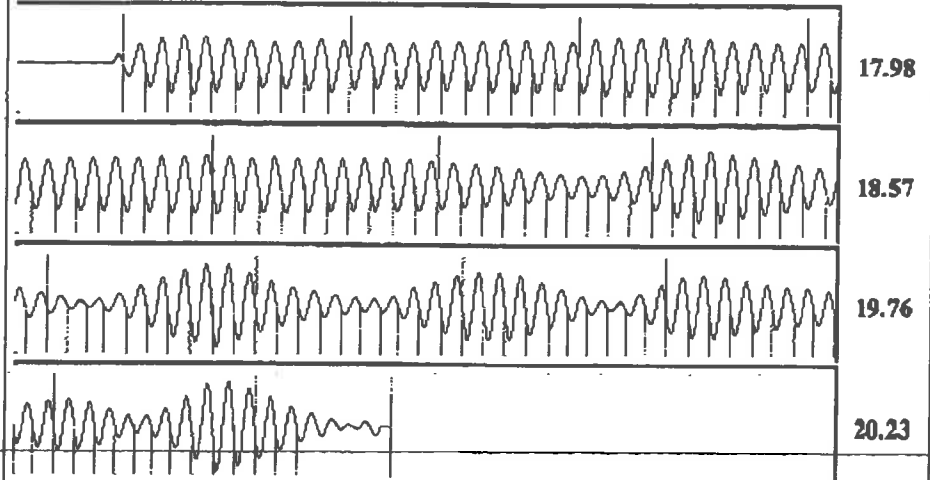
Group: Belpre Well: Breasing B 4-12 (acquired on: 04/09/19 13:59:33)

Production	Potential	Casing Pressure	Producing
Current	BBL/D	32.1 psi (g)	
Oil	BBL/D	Casing Pressure Buildup	Annular Gas Flow
Water	BBL/D	0.005 psi	0 Msc/D
Gas	Msc/D	0.25 min	% Liquid
		Gas/Liquid Interface Pressure	100 %
PR Method	Vogel	37.5 psi (g)	
BHP/SBHP			
Production Efficiency	0.0	Liquid Level Depth	
		4152.83 ft	
Oil 40 deg API		Pump Intake Depth	
Water 1.05 Sp. Gr. H2O		4303.00 ft	
Gas 0.80 Sp. Gr. AIR		Formation Depth	
Acoustic Velocity 1199.89 ft/s		4276.00 ft	



Pump Intake 88.5 psi (g)  
 Producing BHP 79.3 psi (g)  
 Static BHP - - - psi (g)

Group: Belpre Well: Breasing B 4-12 (acquired on: 04/09/19 13:59:33)



Acoustic Velocity 1199.89 ft/s Joints counted 122  
 Joints Per Second 18.9677 J/s Joints to liquid level 131.294  
 Depth to liquid level 4152.83 ft Filter Width 18.1207 22.1207  
 Automatic Collar Count Yes Time to 1st Collar 0.26 6.992

5209953323

16:27

04/09/2019

Conservation Division  
District Office No. 1  
210 E. Frontview, Suite A  
Dodge City, KS 67801



Phone: 620-682-7933  
<http://kcc.ks.gov/>

Dwight D. Keen, Chair  
Shari Feist Albrecht, Commissioner  
Jay Scott Emler, Commissioner

Laura Kelly, Governor

April 17, 2019

Loveness Mpanje  
F. G. Holl Company L.L.C.  
9431 E CENTRAL STE 100  
WICHITA, KS 67206-2563

Re: Temporary Abandonment  
API 15-047-20945-00-00  
BRENSING B 4-12  
NE/4 Sec.12-24S-17W  
Edwards County, Kansas

Dear Loveness Mpanje:

"Your temporary abandonment (TA) application for the well listed above has been approved. In accordance with K.A.R. 82-3-111 the TA status of this well will expire 04/17/2020.

- \* If you return this well to service or plug it, please notify the District Office.
- \* If you sell this well you are required to file a Transfer of Operator form, T-1.
- \* If the well will remain temporarily abandoned, you must submit a new TA application, CP-111, before 04/17/2020.

You may contact me at the number above if you have questions.

Very truly yours,

Michael Maier"