

# ADVANTAGE ELEVATIONS

OIL FIELD SURVEYORS

BOX 8604 - PRATT, KS 67124  
(620) 672-6491

31191

INVOICE NO.

LOTUS OPERATING CO LLC  
OPERATOR

3  
NO.

HASKARD B  
FARM

BARBER COUNTY 12 S 35 T 13 W

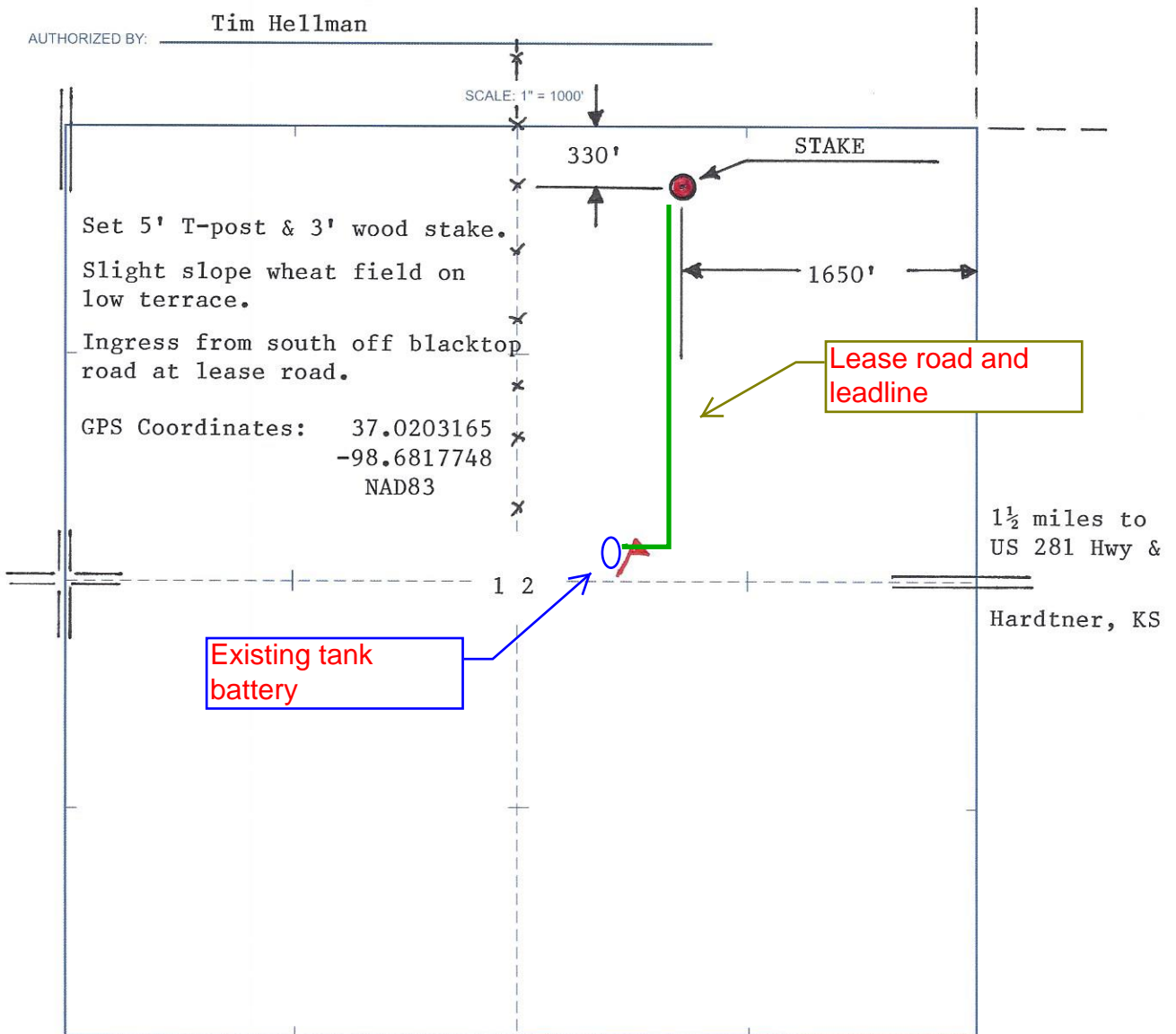
C NE NW NE  
LOCATION

ELEVATION: 1477' GR

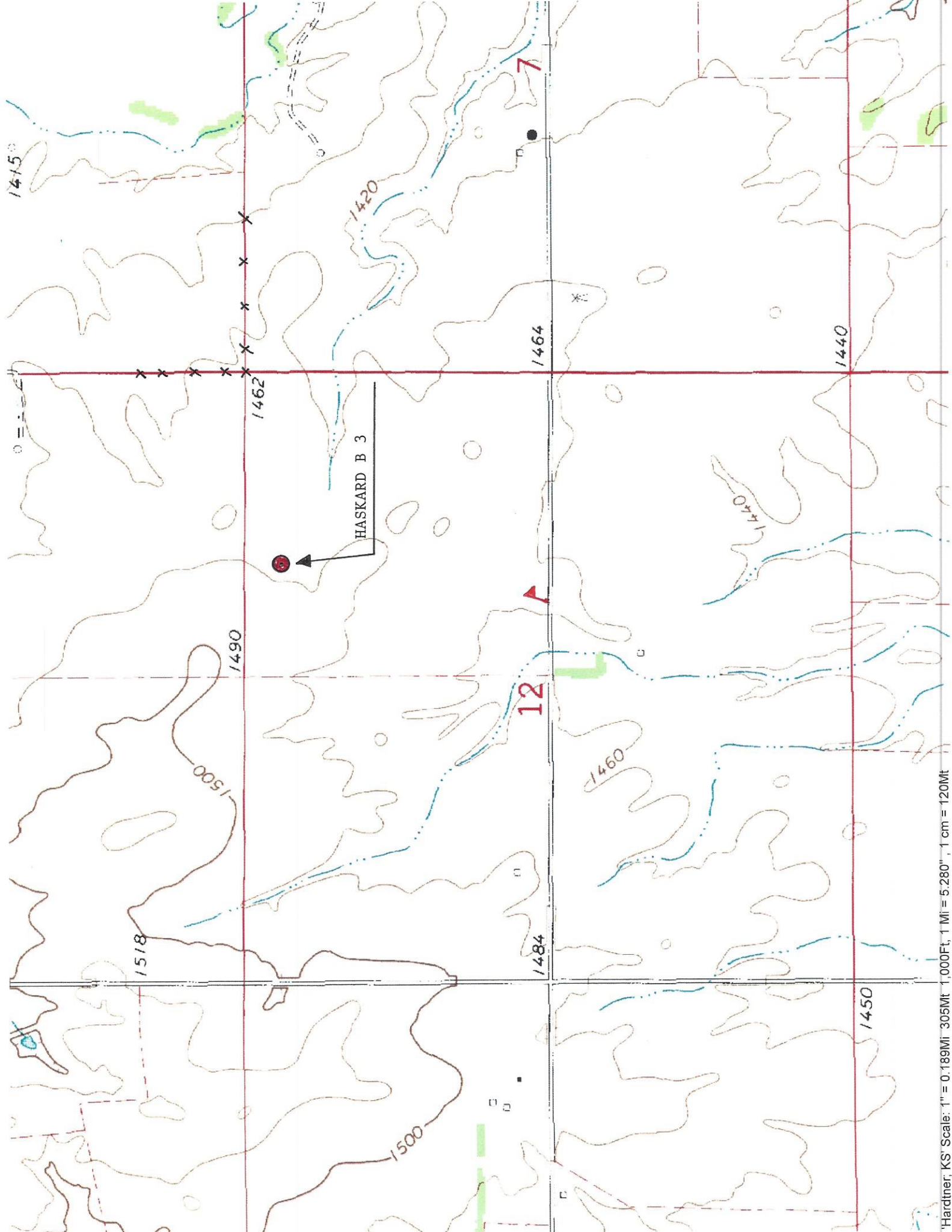


LOTUS OPERATING CO LLC  
100 S Main, Ste 420  
Wichita, KS 67202

AUTHORIZED BY: Tim Hellman



DATE STAKED: 3/1/19



HASKARD B 3

12

7

1415

1462

1464

1440

1490

1518

1500

1500

1484

1460

1440

1450


0 = 1/2



# LOTUS OPERATING INC

HASKARD B 3  
SEC 12-35S-13W  
BARBER CO. KS

## Legend

 37.0203165 -98.6817748

 37.0203165 -98.6817748

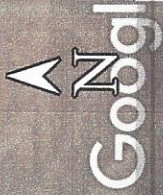
Hackberry Rd

Gyp Hill Rd

© 2018 Google

Google Earth

© 2018 Google



2000 ft