



TRILOBITE TESTING, INC.

DRILL STEM TEST REPORT

Slawson Exploration Co. Inc.

9 19s 28w Lane, Ks

204 Robinson Ave Ste 2300
Oklahoma City, Ok 73102

WU #1-9

Job Ticket: 64347

DST#: 2

ATTN: Keith Reavis

Test Start: 2018.10.30 @ 23:54:00

GENERAL INFORMATION:

Formation: **LKC J**
 Deviated: No Whipstock: ft (KB)
 Time Tool Opened: 03:54:45
 Time Test Ended: 10:12:15
 Interval: **4233.00 ft (KB) To 4259.00 ft (KB) (TVD)**
 Total Depth: 4259.00 ft (KB) (TVD)
 Hole Diameter: 7.88 inches Hole Condition: Good
 Test Type: Conventional Bottom Hole (Reset)
 Tester: Bradley Walter
 Unit No: 78
 Reference Elevations: 2760.00 ft (KB)
 2751.00 ft (CF)
 KB to GR/CF: 9.00 ft

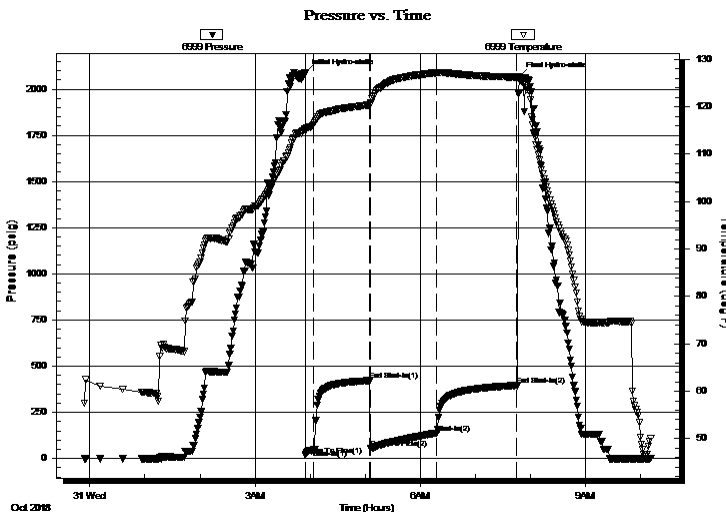
Serial #: 6999

Outside

Press@RunDepth: 138.02 psig @ 4234.00 ft (KB) Capacity: 8000.00 psig
 Start Date: 2018.10.30 End Date: 2018.10.31 Last Calib.: 2018.10.31
 Start Time: 23:54:15 End Time: 10:12:15 Time On Btm: 2018.10.31 @ 03:54:30
 Time Off Btm: 2018.10.31 @ 07:47:45

TEST COMMENT: 10- IF: 5 1/2" blow .
 60- IS: No return.
 60- FF: 28" blow .
 90- FSI: No return.

PRESSURE SUMMARY



Time (Min.)	Pressure (psig)	Temp (deg F)	Annotation
0	2087.17	115.42	Initial Hydro-static
1	18.92	114.82	Open To Flow (1)
10	48.07	116.26	Shut-In(1)
71	421.62	120.39	End Shut-In(1)
72	52.95	120.54	Open To Flow (2)
144	138.02	127.15	Shut-In(2)
231	395.37	126.22	End Shut-In(2)
234	2066.96	125.95	Final Hydro-static

Recovery

Length (ft)	Description	Volume (bbl)
200.00	mcw 10m 90w (oil spots)	1.82
80.00	oil 100o	0.87
0.00	140' Gassy odor in pipe	0.00

Gas Rates

Choke (inches)	Pressure (psig)	Gas Rate (Mcf/d)

* Recovery from multiple tests



**TRILOBITE
TESTING, INC.**

DRILL STEM TEST REPORT

FLUID SUMMARY

Slawson Exploration Co. Inc.

9 19s 28w Lane, Ks

204 Robinson Ave Ste 2300
Oklahoma City, Ok 73102

WU #1-9

Job Ticket: 64347

DST#: 2

ATTN: Keith Reavis

Test Start: 2018.10.30 @ 23:54:00

Mud and Cushion Information

Mud Type: Gel Chem

Cushion Type:

Oil API:

33 deg API

Mud Weight: 9.00 lb/gal

Cushion Length:

ft

Water Salinity:

81000 ppm

Viscosity: 63.00 sec/qt

Cushion Volume:

bbbl

Water Loss: 6.80 in³

Gas Cushion Type:

Resistivity: ohm.m

Gas Cushion Pressure:

psig

Salinity: 2300.00 ppm

Filter Cake: 1.00 inches

Recovery Information

Recovery Table

Length ft	Description	Volume bbbl
200.00	mcw 10m 90w (oil spots)	1.824
80.00	oil 100o	0.867
0.00	140' Gassy odor in pipe	0.000

Total Length: 280.00 ft Total Volume: 2.691 bbl

Num Fluid Samples: 0

Num Gas Bombs: 0

Serial #:

Laboratory Name:

Laboratory Location:

Recovery Comments: rw is .140 @53 = 81000ppm

Pressure vs. Time

