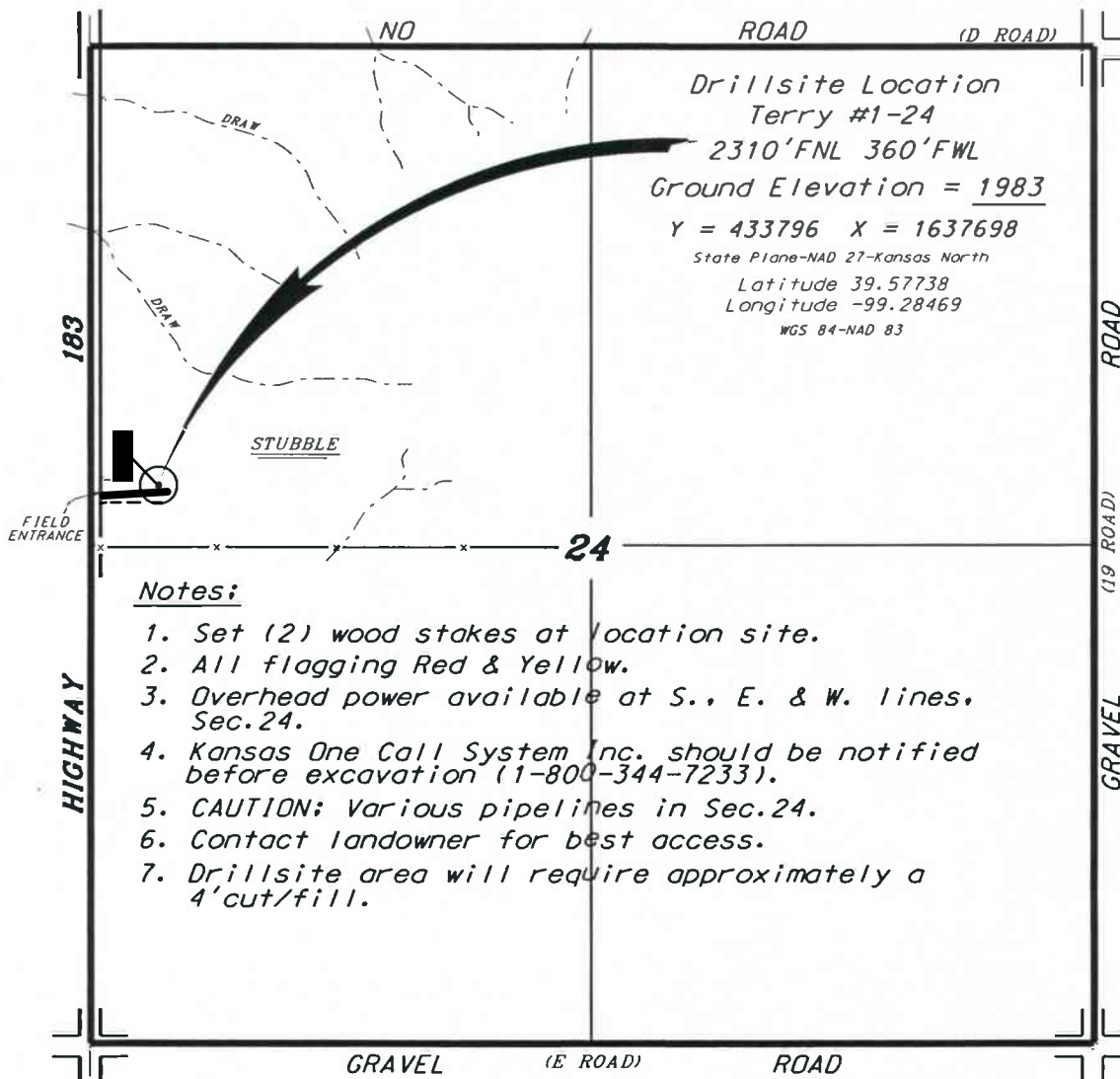


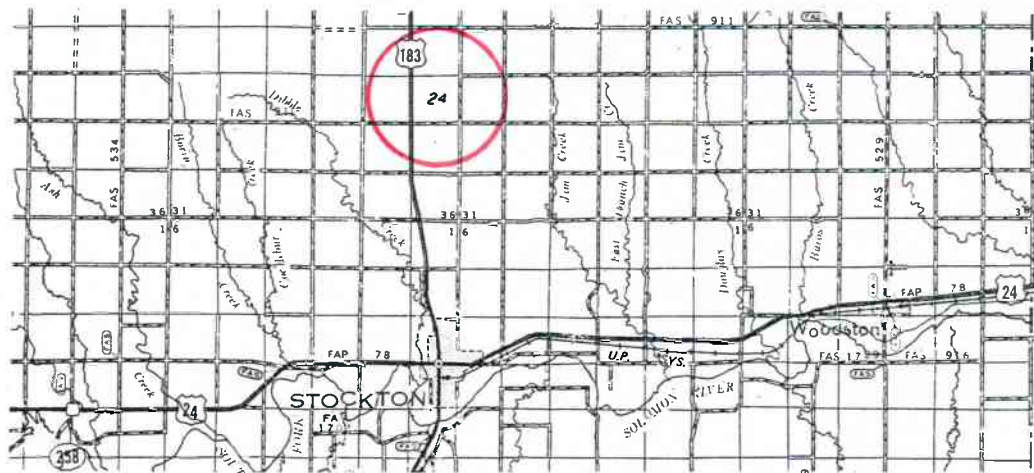
L.D. DRILLING, INC.  
 TERRY LEASE  
 NW.1/4, SECTION 24, T6S, R18W  
 ROOKS COUNTY, KANSAS

Directions:

From the intersection of Highway 24 and Highway 183 (in Stockton, Kansas) go 5.0 miles North on Highway 183 to the SW. corner of Section 24, then go 0.56 miles North to a field entrance on the east edge of road, then go 0.06 miles East to location.



\*Ingress and egress to location as shown on this plat is per usage only and may not be legally opened for public use. Contact landowner, tenant and county road department for access.



Controlling data is based upon the best maps and photographs available to us and upon a regular section of land containing 640 acres.  
 Approximate section lines were determined using the normal standard of care of oilfield surveyors practicing in the state of Kansas. The section corners, which establish the precise section lines, were not necessarily located, and the exact location of the drillsite location in the section is not guaranteed. Therefore, the operator securing this service and accepting this plat and all other parties relying thereon agree to hold Central Kansas Oilfield Services, Inc., its officers and employees harmless from all losses, costs and expenses and said entities released from any liability from incidental or consequential damages.  
 Elevations derived from National Geodetic Vertical Datum.

Date March 19, 2019