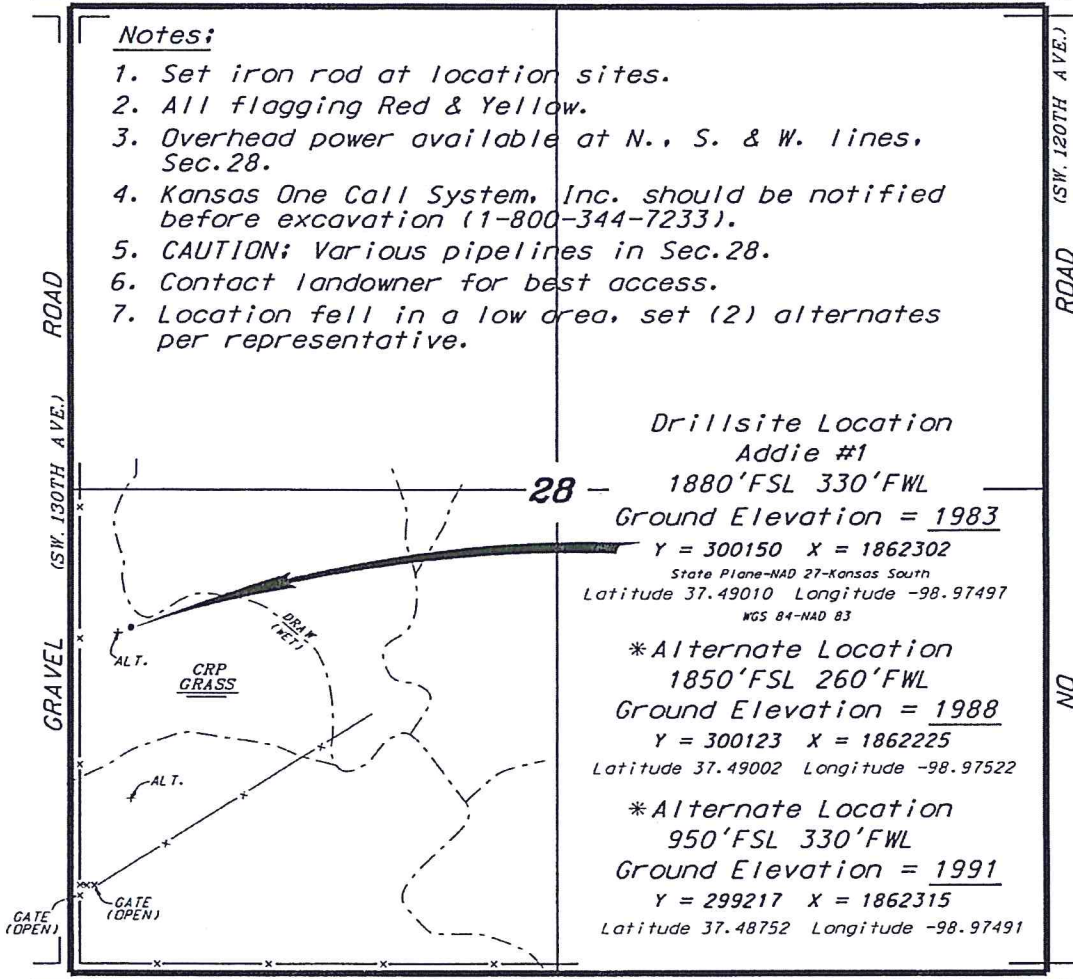


**GRIFFIN MANAGEMENT, LLC**  
**ADDIE LEASE**  
**SW. 1/4, SECTION 28, T29S, R15W**  
**PRATT COUNTY, KANSAS**

GRAVEL (SW. 100TH ST.) ROAD

**Notes:**

1. Set iron rod at location sites.
2. All flagging Red & Yellow.
3. Overhead power available at N., S. & W. lines, Sec. 28.
4. Kansas One Call System, Inc. should be notified before excavation (1-800-344-7233).
5. CAUTION; Various pipelines in Sec. 28.
6. Contact landowner for best access.
7. Location fell in a low area, set (2) alternates per representative.



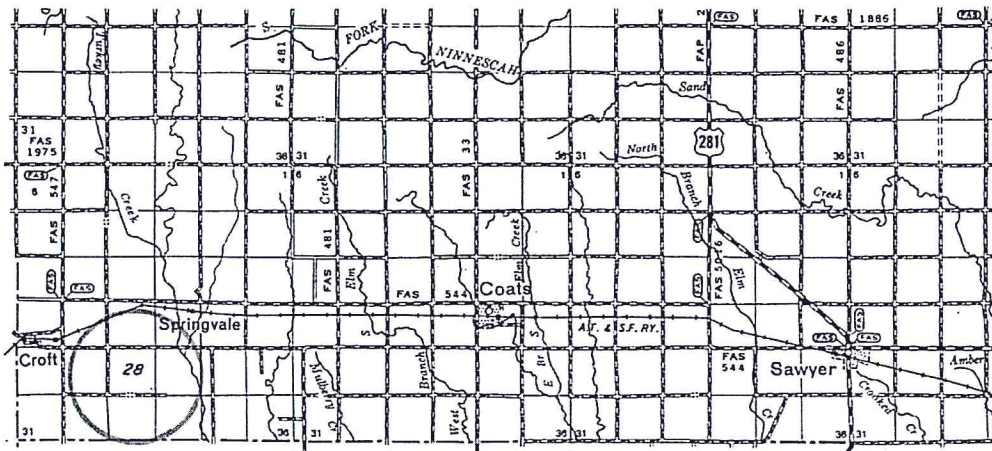
**Drillsite Location**  
**Addie #1**

**1880'FSL 330'FWL**  
**Ground Elevation = 1983**  
**Y = 300150 X = 1862302**  
 State Plane-NAD 27-Kansas South  
**Latitude 37.49010 Longitude -98.97497**  
 NGS 84-NAD 83

**\*Alternate Location**  
**1850'FSL 260'FWL**  
**Ground Elevation = 1988**  
**Y = 300123 X = 1862225**  
 Latitude 37.49002 Longitude -98.97522

**\*Alternate Location**  
**950'FSL 330'FWL**  
**Ground Elevation = 1991**  
**Y = 299217 X = 1862315**  
 Latitude 37.48752 Longitude -98.97491

GRAVEL (SW. 110TH ST.) ROAD



Controlling data is based upon the best maps and photographs available to us and upon a regular section of land containing 640 acres.  
 Approximate section lines were determined using the normal standard of care of oilfield surveyors practicing in the state of Kansas. The section corners, which establish the precise section lines, were not necessarily located, and the exact location of the drillsite location in the section is not guaranteed. Therefore, the operator securing this service and accepting this plat and all other parties relying thereon agree to hold Central Kansas Oilfield Services, Inc., its officers and employees harmless from all losses, costs and expenses and said entities released from any liability from incidental or consequential damages.  
 Elevations derived from National Geodetic Vertical Datum.

Date March 20, 2019

\* Ingress and egress to location as shown on this plat is per usage only and may not be legally opened for public use. Contact landowner, tenant and county road department for access.



UNITED STATES  
DEPARTMENT OF THE INTERIOR  
GEOLOGICAL SURVEY

STATE OF

