

Fall & Associates

Stake and Elevation Service

P.O. Box 222

Pretty Prairie, KS. 67570

785-243-7506

Date 3-25-19

Invoice Number 0322191

MURFIN DRILLING

1-7

Jean 'A'

Operator

Number

Farm Name

Cheyenne-KS

7

1s

37w

1320'FSL 330'FEL

County-State

S

T

R

Location

Murfin Drilling
250 N Wter
Suite 300
Wichita, KS. 67202

Elevation 3164 Gr.

Ordered By: Shauna

Scale 1"=1000'



Set 6' wood stake on slight to moderate slope wheat 60' E of draw bank.

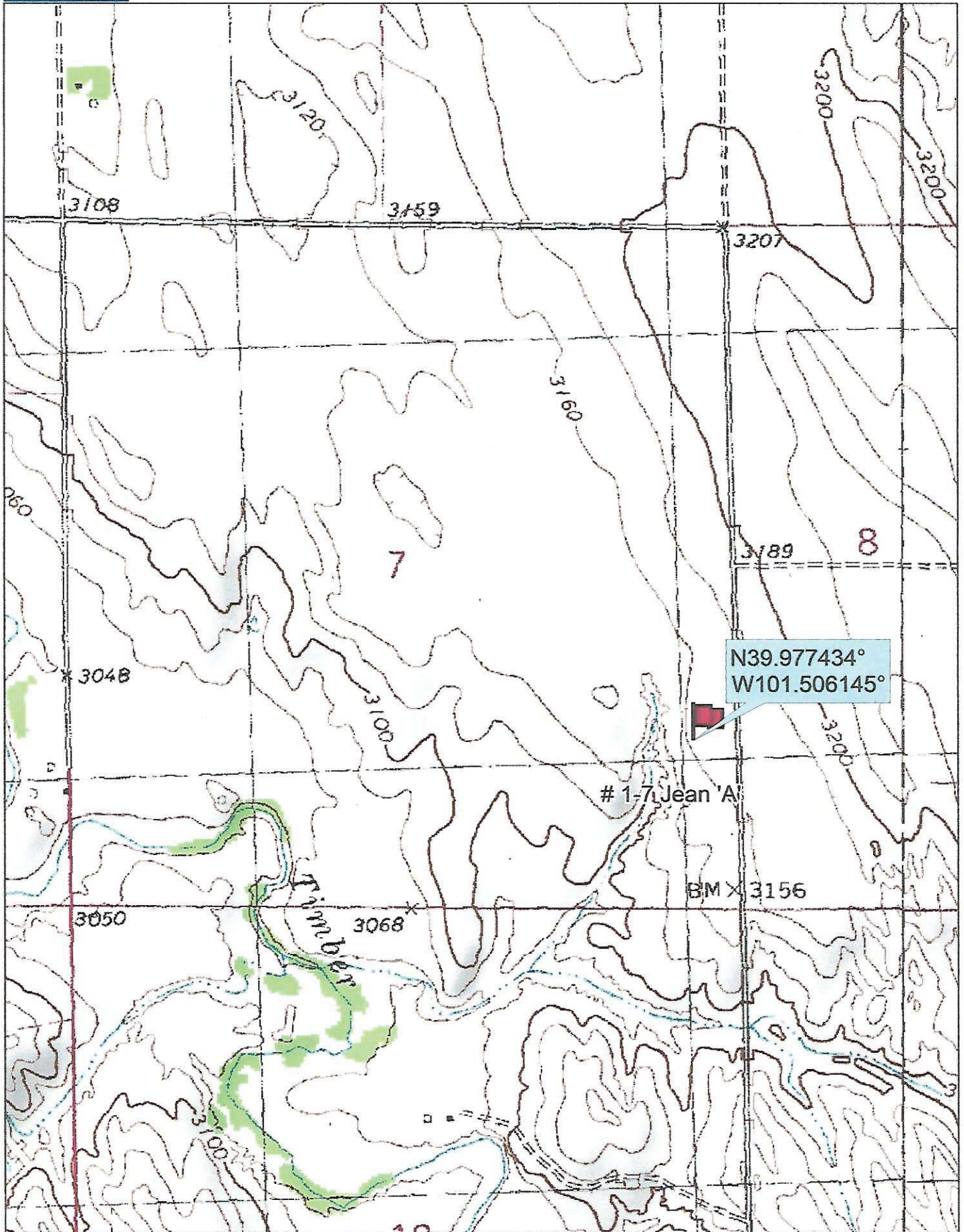
7

Stake

330'

1320'





N39.977434°
W101.506145°

1-7, Jean A

BM X 3156

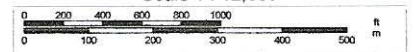
Data use subject to license.

© DeLorme. Topo North America™ 9.

www.delorme.com



Scale 1 : 12,000



1" = 1,000.0 ft Data Zoom 13-1