

JERRY GREEN

CONSULTING GEOLOGIST
 4350 Keystone Rd
 HAYS, KS 67601
 PHONE: 785-625-5155

GEOLOGIST'S REPORT

DRILLING TIME AND SAMPLE LOG

COMPANY CASTLE RESOURCES, INC.
 LEASE PATTERSON #1
 FIELD RESERVOIR WEST

LOCATION NE-NW-NW
 SEC 32 TWP 7S RGE 19W
 COUNTY ROOKS STATE KANSAS

CONTRACTOR WHITE KNIGHT DRILLING
 SPUD 3-15-19 COMP 3-21-19
 RTD 3470' LTD 3470'

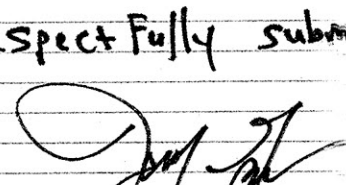
MUD UP 2800' TYPE MUD CHEM
 SAMPLES SAVED FROM 2800' TO TD.

DRILLING TIME KEPT FROM 2800' TO TD.
 SAMPLES EXAMINED FROM 2800' TO TD.

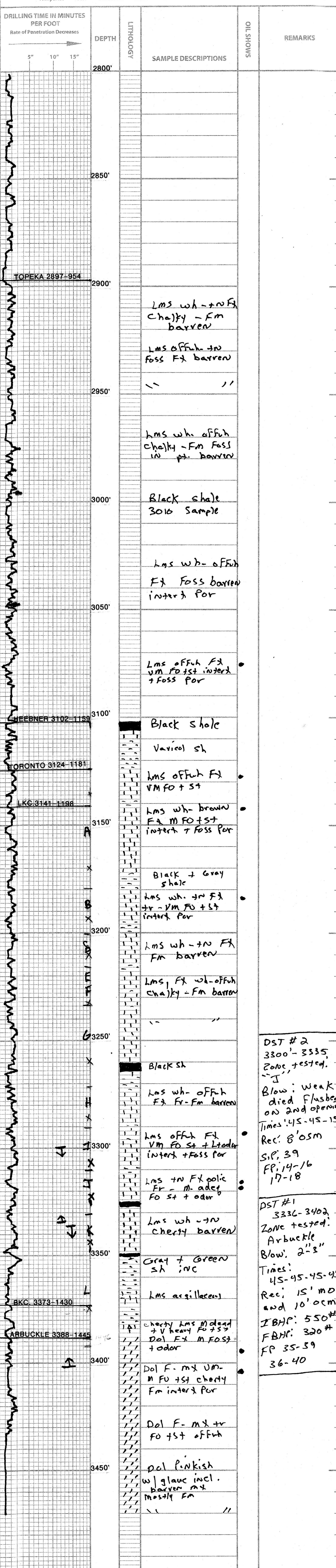
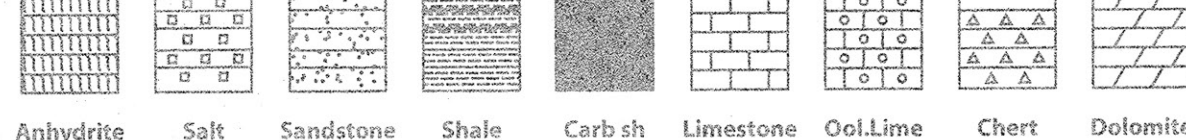
GEOLOGICAL SUPERVISION FROM 2800' TO TD.

FORMATION TOPS LOG SAMPLES

| FORMATION TOPS | LOG | SAMPLES |
|----------------|---------------|-----------|
| ANHY | 1414-1454 529 | |
| TOPEKA | 2895-952 | 2897-954 |
| HEEBNER | 3100-1157 | 3102-1159 |
| TORONTO | 3122-1179 | 3124-1181 |
| LKC | 3138-1195 | 3141-1198 |
| BKC | 3374-1431 | 3373-1430 |
| ARBUCKLE | 3392-1449 | 3388-1445 |
| RTD | 3470-1527 | 3470-1527 |

REMARKS: All parties involved recommended that this well be plugged.
 Respectfully submitted


LEGEND



DST #2
 3300' - 3335'
 Zone tested.
 Blow: Weak
 died Flushed
 on 2nd opening
 Times: 45-45-15
 Rec: 8' 0" sm
 SP: 39
 FP: 14-16
 17-18

DST #1
 3336-3402
 Zone tested.
 Arbuckle
 Blow: 2"-3"
 Times:
 45-45-45-45
 Rec: 15' mo
 and 10' ocm
 IBHP: 550#
 FBHP: 320#
 FP 35-39
 36-40