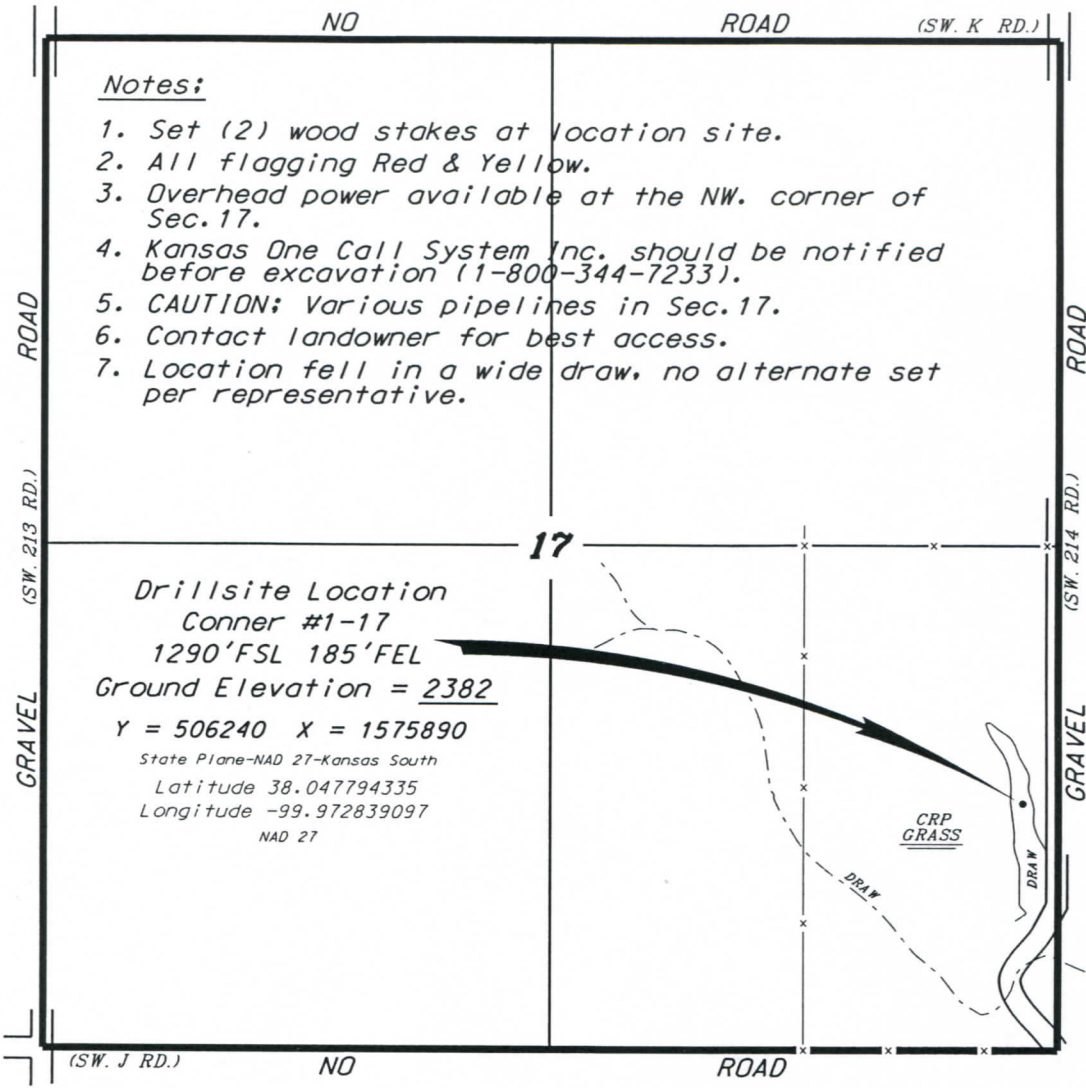


VINCENT OIL CORPORATION
 CONNER LEASE
 SE. 1/4, SECTION 17, T23S, R24W
 HODGEMAN COUNTY, KANSAS

*Ingress and egress to location as shown on this plot is per usage only and may not be legally opened for public use. Contact landowner, tenant and county road department for access.



Notes:

1. Set (2) wood stakes at location site.
2. All flagging Red & Yellow.
3. Overhead power available at the NW. corner of Sec. 17.
4. Kansas One Call System Inc. should be notified before excavation (1-800-344-7233).
5. CAUTION: Various pipelines in Sec. 17.
6. Contact landowner for best access.
7. Location fell in a wide draw, no alternate set per representative.

Drillsite Location
 Conner #1-17
 1290'FSL 185'FEL
 Ground Elevation = 2382

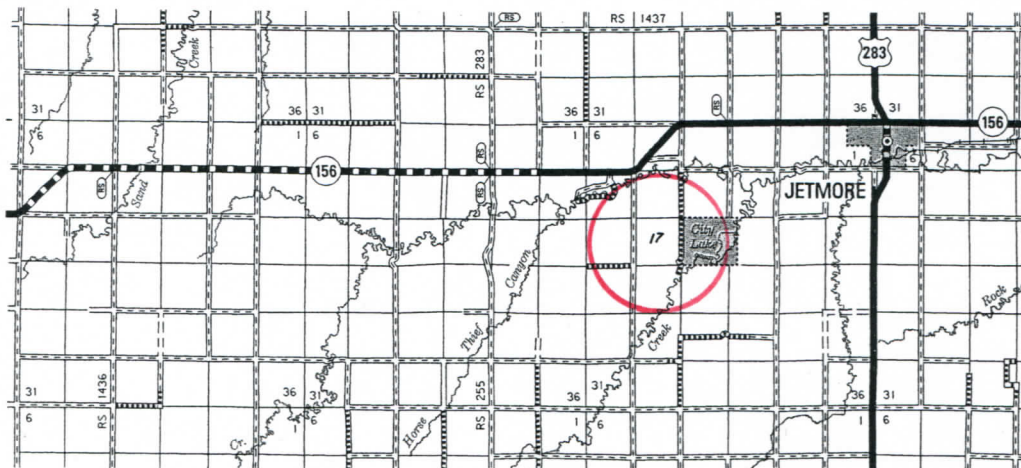
Y = 506240 X = 1575890

State Plane-NAD 27-Kansas South

Latitude 38.047794335

Longitude -99.972839097

NAD 27



* Controlling data is based upon the best maps and photographs available to us and upon a regular section of land containing 640 acres.

* Approximate section lines were determined using the normal standard of care of oilfield surveyors practicing in the state of Kansas. The section corners, which establish the precise section lines, were not necessarily located, and the exact location of the drillsite location in the section is not guaranteed. Therefore, the operator securing this service and accepting this plot and all other parties relying thereon agree to hold Central Kansas Oilfield Services, Inc., its officers and employees harmless from all losses, costs and expenses and said entities released from any liability from incidental or consequential damages.

* Elevations derived from National Geodetic Vertical Datum.

Date February 28, 2019