

KANSAS CORPORATION COMMISSION
OIL & GAS CONSERVATION DIVISION

Form must be Typed
Form must be signed

TEMPORARY ABANDONMENT WELL APPLICATION

All blanks must be complete

OPERATOR: License#
Name:
Address 1:
Address 2:
City: State: Zip:
Contact Person:
Phone:
Contact Person Email:
Field Contact Person:
Field Contact Person Phone:

API No. 15-
Spot Description:
Sec. Twp. S. R.
GPS Location: Lat: Long:
Datum: NAD27 NAD83 WGS84
County: Elevation:
Lease Name: Well #:
Well Type: Oil Gas OG WSW Other:
SWD Permit #: ENHR Permit #:
Gas Storage Permit #:
Spud Date: Date Shut-In:

Table with 7 columns: Conductor, Surface, Production, Intermediate, Liner, Tubing. Rows include Size, Setting Depth, Amount of Cement, Top of Cement, Bottom of Cement.

Casing Fluid Level from Surface: How Determined? Date:
Casing Squeeze(s): to w / sacks of cement, to w / sacks of cement. Date:
Do you have a valid Oil & Gas Lease? Yes No
Depth and Type: Junk in Hole at Tools in Hole at Casing Leaks: Yes No Depth of casing leak(s):
Type Completion: ALT. I ALT. II Depth of: DV Tool: w / sacks of cement Port Collar: w / sack of cement
Packer Type: Size: Inch Set at: Feet
Total Depth: Plug Back Depth: Plug Back Method:

Geological Data:

Table with 4 columns: Formation Name, Formation Top, Formation Base, Completion Information. Rows 1 and 2.

UNDER PENALTY OF PERJURY I HEREBY ATTEST THAT THE INFORMATION CONTAINED HEREIN IS TRUE AND CORRECT TO THE BEST OF MY KNOWLEDGE

Submitted Electronically

Do NOT Write in This Space - KCC USE ONLY
Date Tested: Results: Date Plugged: Date Repaired: Date Put Back in Service:
Review Completed by: Comments:
TA Approved: Yes Denied Date:

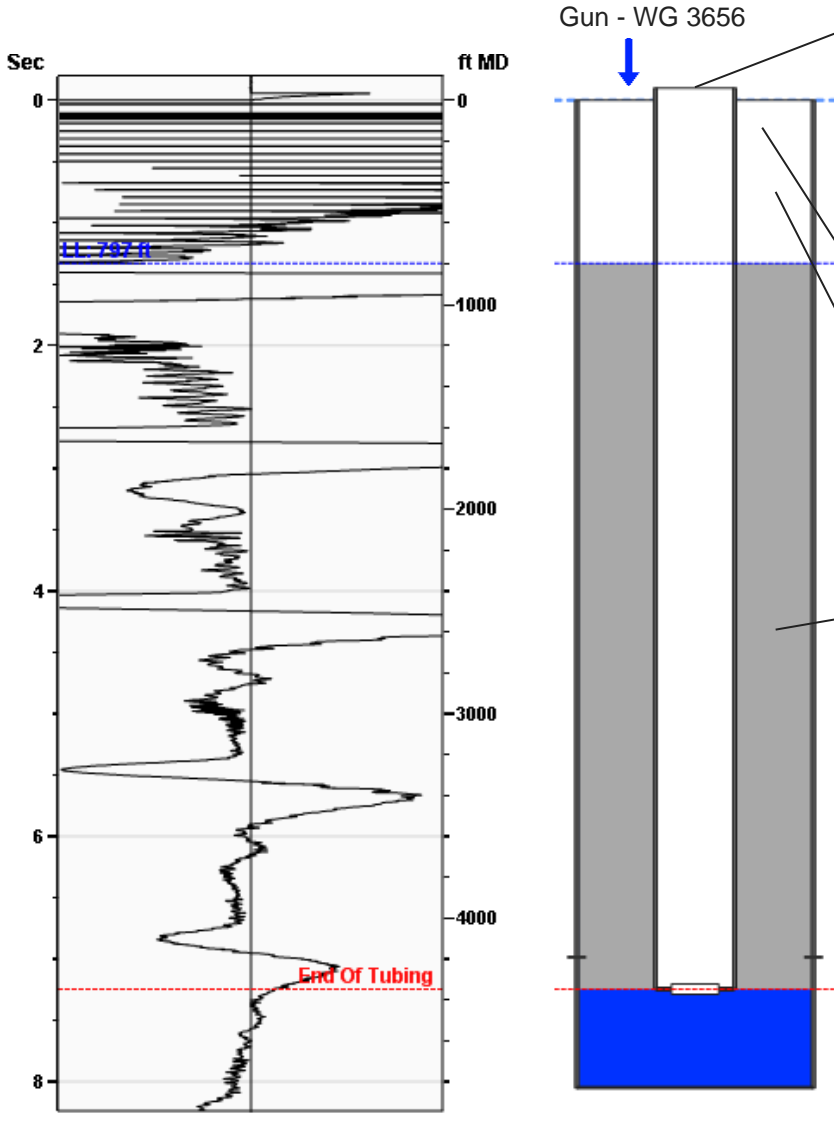
Mail to the Appropriate KCC Conservation Office:

Table with 3 columns: District Office, Address, Phone. Rows for District Office #1, #2, #3, #4.



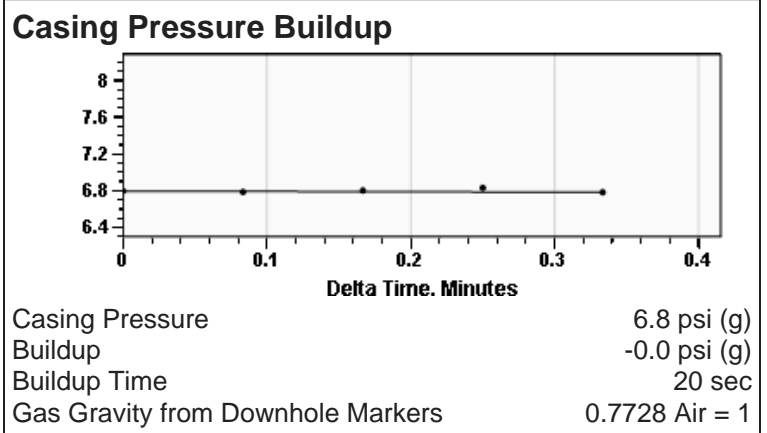
Liquid Level **797 ft MD**

Fluid Above Pump **3550 ft TVD**
Equivalent Gas Free Above Pump **3550 ft TVD**



Production			
Date Entered	04/01/19		
Oil	Current **	Potential **	BBL/D
Water	**	**	BBL/D
Gas	**	**	Mscf/D
IPR Method	Vogel		
PBHP/SBHP	-0.00		
Producing Efficiency	0.00%		
Casing Pressure			
Pressure	6.8 psi (g)		
Annular Gas Flow			
Gas Flow	0.0 Mscf/D		
Fluid Properties			
% Liquid Above Pump	100.00%		
% Liquid Below Pump	**		
Depths			
Pump Intake Depth	4347 ft		
Formation Depth	4204 ft		
Wellbore Pressures			
PIP	1166.9 psi (g)		
PBHP	1123.4 psi (g)		
SBHP	**		
Gas/Liq Interface	7.3 psi (g)		

Marker Analysis	
Marker Used	End Of Tubing
Depth	4347 ft
Acoustic Velocity	1200 ft/s
Joints Per Sec.	18.93 Jts/sec
Joints To Liquid	25.15 Jts



Comments and Recommendations

Fluid Level for TA

Echometer Company
5001 Ditto Lane
Wichita Falls, TX 76302
(940) 767-4334
info@echometer.com

Conservation Division
District Office No. 1
210 E. Frontview, Suite A
Dodge City, KS 67801



Phone: 620-682-7933
<http://kcc.ks.gov/>

Dwight D. Keen, Chair
Shari Feist Albrecht, Commissioner
Jay Scott Emler, Commissioner

Laura Kelly, Governor

April 02, 2019

Brady Pfeiffer
Norstar Petroleum, Inc.
88 INVERNESS CIR E. UNIT F104
ENGLEWOOD, CO 80112-5514

Re: Temporary Abandonment
API 15-033-20504-00-00
ROBERT WIMMER 2
SE/4 Sec.35-33S-20W
Comanche County, Kansas

Dear Brady Pfeiffer:

"Your temporary abandonment (TA) application for the well listed above has been approved. In accordance with K.A.R. 82-3-111 the TA status of this well will expire 04/02/2020.

- * If you return this well to service or plug it, please notify the District Office.
- * If you sell this well you are required to file a Transfer of Operator form, T-1.
- * If the well will remain temporarily abandoned, you must submit a new TA application, CP-111, before 04/02/2020.

You may contact me at the number above if you have questions.

Very truly yours,

Michael Maier"