

KANSAS CORPORATION COMMISSION
OIL & GAS CONSERVATION DIVISION

Form must be Typed
Form must be signed

TEMPORARY ABANDONMENT WELL APPLICATION

All blanks must be complete

OPERATOR: License#
Name:
Address 1:
Address 2:
City: State: Zip:
Contact Person:
Phone:
Contact Person Email:
Field Contact Person:
Field Contact Person Phone:

API No. 15-
Spot Description:
Sec. Twp. S. R.
feet from N / S Line of Section
feet from E / W Line of Section
GPS Location: Lat: , Long:
Datum: NAD27 NAD83 WGS84
County: Elevation: GL KB
Lease Name: Well #:
Well Type: Oil Gas OG WSW Other:
SWD Permit #: ENHR Permit #:
Gas Storage Permit #:
Spud Date: Date Shut-In:

Table with 7 columns: Conductor, Surface, Production, Intermediate, Liner, Tubing. Rows include Size, Setting Depth, Amount of Cement, Top of Cement, Bottom of Cement.

Casing Fluid Level from Surface: How Determined? Date:
Casing Squeeze(s): to w / sacks of cement, to w / sacks of cement. Date:
Do you have a valid Oil & Gas Lease? Yes No
Depth and Type: Junk in Hole at Tools in Hole at Casing Leaks: Yes No Depth of casing leak(s):
Type Completion: ALT. I ALT. II Depth of: DV Tool: w / sacks of cement Port Collar: w / sack of cement
Packer Type: Size: Inch Set at: Feet
Total Depth: Plug Back Depth: Plug Back Method:

Geological Data:

Table with 4 columns: Formation Name, Formation Top, Formation Base, Completion Information. Rows 1 and 2.

UNDER PENALTY OF PERJURY I HEREBY ATTEST THAT THE INFORMATION CONTAINED HEREIN IS TRUE AND CORRECT TO THE BEST OF MY KNOWLEDGE

Submitted Electronically

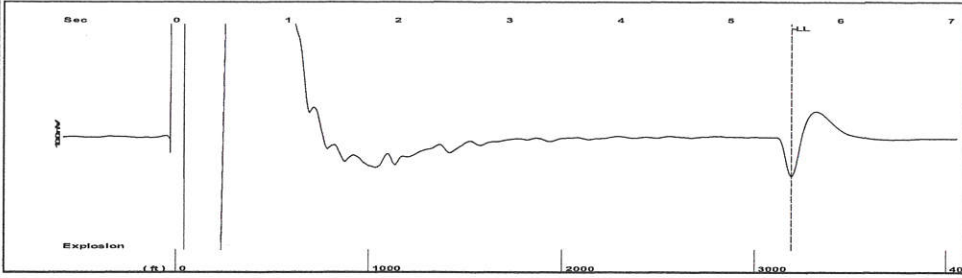
Do NOT Write in This Space - KCC USE ONLY
Date Tested: Results: Date Plugged: Date Repaired: Date Put Back in Service:
Review Completed by: Comments:
TA Approved: Yes Denied Date:

Mail to the Appropriate KCC Conservation Office:

Table with 3 columns: District Office, Address, Phone. Rows for District Office #1, #2, #3, #4.

Joslin B-2

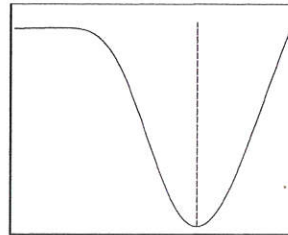
Group: TA'D WELLS Well: JOSLIN B-2 (acquired on: 03/21/19 13:44:29)



Time 5.554 sec
 Joints 100.743 Jts
 Depth 3193.55 ft

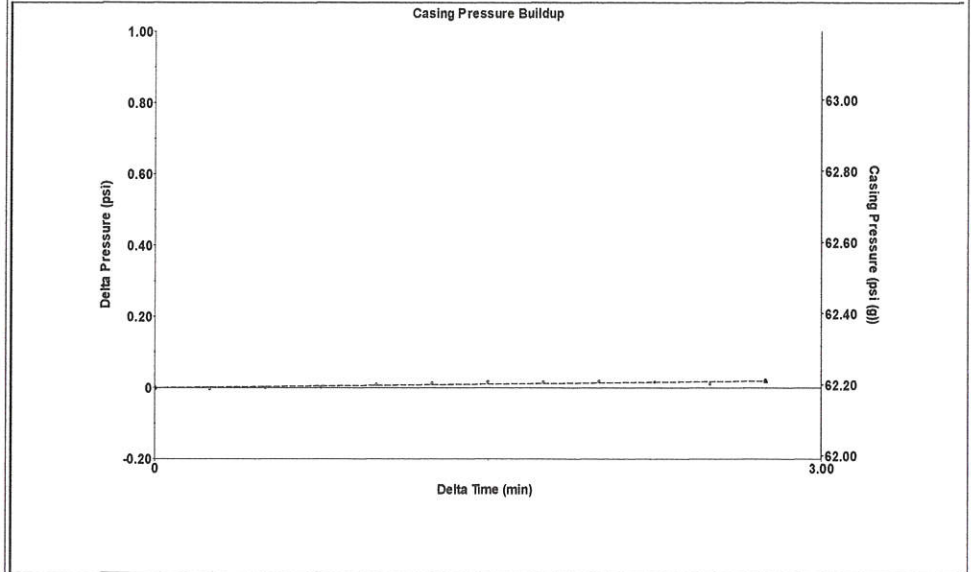
Liquid level calculated with user supplied Acoustic Velocity

Acoustic Velocity 1150 ft/s



Analysis Method: Acoustic Velocity

Group: TA'D WELLS Well: JOSLIN B-2 (acquired on: 03/21/19 13:44:29)



Change in Pressure 0.02 psi PT10857
 Change in Time 2.75 min Range 0 - ? psi

Group: TA'D WELLS Well: JOSLIN B-2 (acquired on: 03/21/19 13:44:29)

Production	Potential	Casing Pressure	Producing
Oil - * -	- * - BBL/D	62.2 psi (g)	
Water - * -	- * - BBL/D	Casing Pressure Buildup	Annular
Gas - * -	- * - Mscf/D	0.019 psi	Gas Flow
		2.75 min	0 Mscf/D
IPR Method	Vogel	Gas/Liquid Interface Pressure	% Liquid
PBHP/SBHP	- * -	69.7 psi (g)	100 %
Production Efficiency	0.0		
Oil 40 deg.API		Liquid Level Depth	
Water 1.05 Sp.Gr.H2O		3193.55 ft	
Gas 0.84 Sp.Gr.AIR		Pump Intake Depth	
		- * - ft	
Acoustic Velocity	1150 ft/s	Formation Depth	
		5700.00 ft	
Formation Submergence			Pump Intake
Total Gaseous Liquid Column HT (TVD)	2506 ft		- * - psi (g)
Equivalent Gas Free Liquid HT (TVD)	2506 ft		Producing BHP
			1209.2 psi (g)
Acoustic Test			Static BHP
			- * - psi (g)



Group: TA'D WELLS Well: JOSLIN B-2 (acquired on: 03/21/19 13:44:29)

Entered Acoustic Velocity for Liquid Level depth determination

Conservation Division
District Office No. 1
210 E. Frontview, Suite A
Dodge City, KS 67801



Phone: 620-682-7933
<http://kcc.ks.gov/>

Dwight D. Keen, Chair
Shari Feist Albrecht, Commissioner
Jay Scott Emler, Commissioner

Laura Kelly, Governor

April 09, 2019

Katherine McClurkan
Merit Energy Company, LLC
13727 Noel Road, Suite 1200
Dallas, TX 75240

Re: Temporary Abandonment
API 15-189-10034-00-00
Joslin B 2
NE/4 Sec.01-31S-39W
Stevens County, Kansas

Dear Katherine McClurkan:

"Your temporary abandonment (TA) application for the well listed above has been approved. In accordance with K.A.R. 82-3-111 the TA status of this well will expire 04/09/2020.

- * If you return this well to service or plug it, please notify the District Office.
- * If you sell this well you are required to file a Transfer of Operator form, T-1.
- * If the well will remain temporarily abandoned, you must submit a new TA application, CP-111, before 04/09/2020.

You may contact me at the number above if you have questions.

Very truly yours,

Michael Maier"