

KANSAS CORPORATION COMMISSION
OIL & GAS CONSERVATION DIVISION

TEMPORARY ABANDONMENT WELL APPLICATION

OPERATOR: License#
Name:
Address 1:
Address 2:
City: State: Zip:
Contact Person:
Phone:
Contact Person Email:
Field Contact Person:
Field Contact Person Phone:

API No. 15-
Spot Description:
Sec. Twp. S. R.
GPS Location: Lat: Long:
Datum: NAD27 NAD83 WGS84
County: Elevation:
Lease Name: Well #:
Well Type: Oil Gas OG WSW Other:
SWD Permit #: ENHR Permit #:
Gas Storage Permit #:
Spud Date: Date Shut-In:

Table with 7 columns: Conductor, Surface, Production, Intermediate, Liner, Tubing. Rows include Size, Setting Depth, Amount of Cement, Top of Cement, Bottom of Cement.

Casing Fluid Level from Surface: How Determined? Date:
Casing Squeeze(s): to w / sacks of cement, to w / sacks of cement. Date:
Do you have a valid Oil & Gas Lease? Yes No
Depth and Type: Junk in Hole at Tools in Hole at Casing Leaks: Yes No Depth of casing leak(s):
Type Completion: ALT. I ALT. II Depth of: DV Tool: w / sacks of cement Port Collar: w / sack of cement
Packer Type: Size: Inch Set at: Feet
Total Depth: Plug Back Depth: Plug Back Method:

Geological Data:

Table with 4 columns: Formation Name, Formation Top, Formation Base, Completion Information. Rows 1 and 2.

UNDER PENALTY OF PERJURY I HEREBY ATTEST THAT THE INFORMATION CONTAINED HEREIN IS TRUE AND CORRECT TO THE BEST OF MY KNOWLEDGE

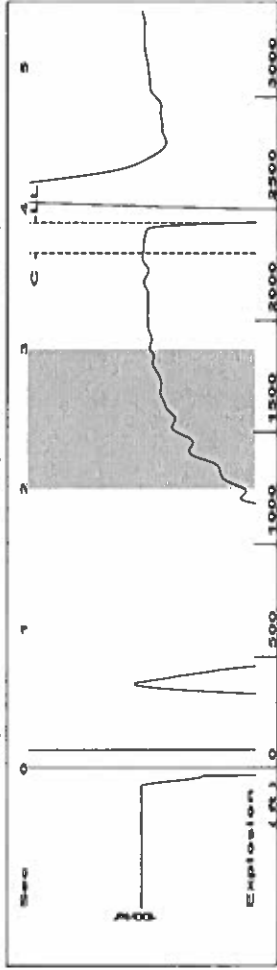
Submitted Electronically

Do NOT Write in This Space - KCC USE ONLY
Date Tested: Results: Date Plugged: Date Repaired: Date Put Back in Service:
Review Completed by: Comments:
TA Approved: Yes Denied Date:

Mail to the Appropriate KCC Conservation Office:

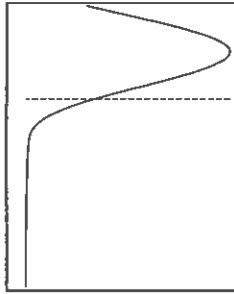
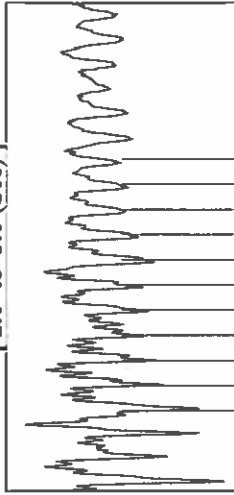
Table with 2 columns: Office Address, Phone. Rows for District Office #1, #2, #3, #4.

Group: TAD Well: Garden C-10 (acquired on: 04/12/19 08:55:48)



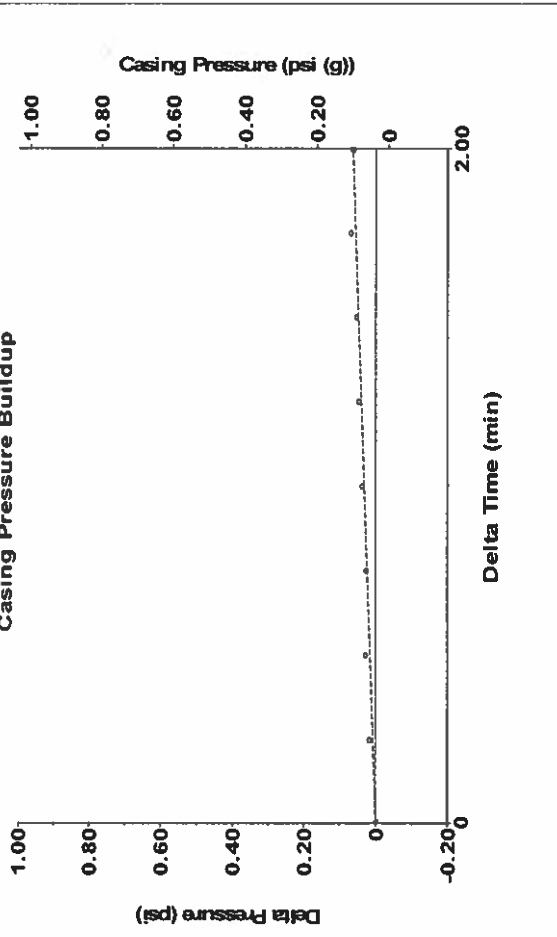
Filter Type High Pass Automatic Collar Count Yes
 Manual Acoustic Veloc 226.31 ft/s Manual JTS/sec 19.3424
 Time 3.897 sec
 Joints 76.9749 Jts
 Depth 2440.11 ft

[2.0 to 3.0 (Sec)]



Group: TAD Well: Garden C-10 (acquired on: 04/12/19 08:55:48)

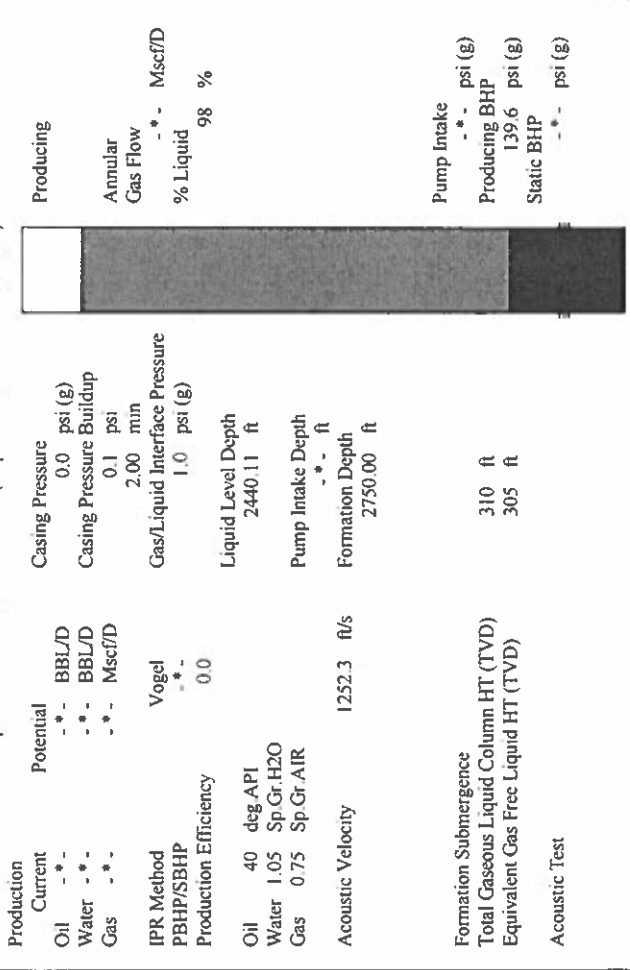
Casing Pressure Buildup



Change in Pressure 0.06 psi PT 6902 Range
 Change in Time 2.00 min

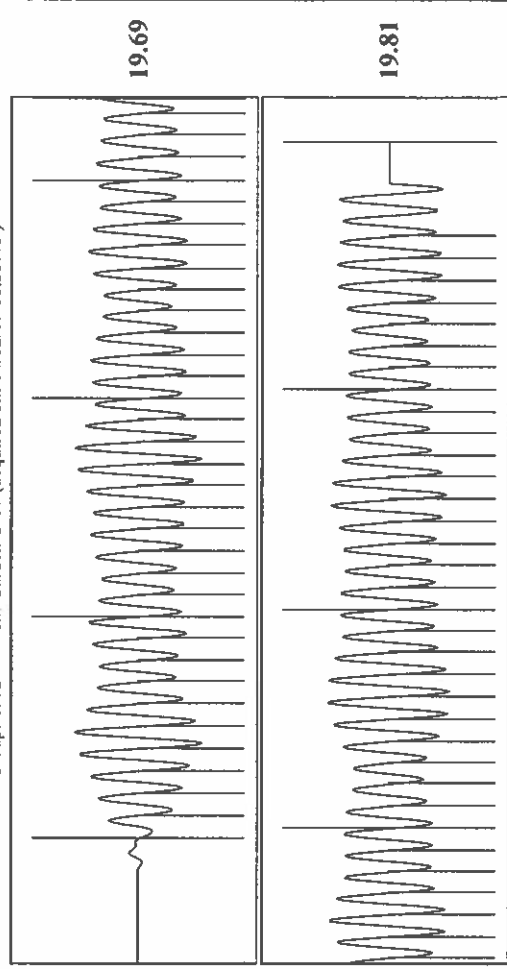
Analysis Method: Automatic

Group: TAD Well: Garden C-10 (acquired on: 04/12/19 08:55:48)



Production	Potential	Casing Pressure	Producing
Current	0.0 psi (g)	0.0 psi (g)	Annular Gas Flow
Oil	BBL/D	Casing Pressure Buildup	0.1 psi
Water	BBL/D	2.00 min	% Liquid 98 %
Gas	Mscf/D	Gas/Liquid Interface Pressure	
IPR Method	Vogel	1.0 psi (g)	
PBHP/SBHP	0.0	Liquid Level Depth	
Production Efficiency		2440.11 ft	
Oil	40 deg API	Pump Intake Depth	
Water	1.05 Sp.Gr.H2O	2750.00 ft	
Gas	0.75 Sp.Gr.AIR		
Acoustic Velocity	1252.3 ft/s		
Formation Submergence			
Total Gaseous Liquid Column HT (TVD)	310 ft		
Equivalent Gas Free Liquid HT (TVD)	305 ft		
Acoustic Test			

Group: TAD Well: Garden C-10 (acquired on: 04/12/19 08:55:48)



Acoustic Velocity	1252.3 ft/s	Joints counted	67
Joints Per Second	19.7524 Jts/sec	Joints to liquid level	76.9749
Depth to liquid level	2440.11 ft	Filter Width	17.3424
Automatic Collar Count	Yes	Time to 1st Collar	0.288
			21.3424
			3.68

Conservation Division
District Office No. 1
210 E. Frontview, Suite A
Dodge City, KS 67801



Phone: 620-682-7933
<http://kcc.ks.gov/>

Dwight D. Keen, Chair
Shari Feist Albrecht, Commissioner
Jay Scott Emler, Commissioner

Laura Kelly, Governor

April 30, 2019

Katherine McClurkan
Merit Energy Company, LLC
13727 Noel Road, Suite 1200
Dallas, TX 75240

Re: Temporary Abandonment
API 15-055-20356-00-00
Garden C 10
NE/4 Sec.16-23S-34W
Finney County, Kansas

Dear Katherine McClurkan:

"Your temporary abandonment (TA) application for the well listed above has been approved. In accordance with K.A.R. 82-3-111 the TA status of this well will expire 04/30/2020.

- * If you return this well to service or plug it, please notify the District Office.
- * If you sell this well you are required to file a Transfer of Operator form, T-1.
- * If the well will remain temporarily abandoned, you must submit a new TA application, CP-111, before 04/30/2020.

You may contact me at the number above if you have questions.

Very truly yours,

Michael Maier"