

KANSAS CORPORATION COMMISSION
OIL & GAS CONSERVATION DIVISION

TEMPORARY ABANDONMENT WELL APPLICATION

All blanks must be complete

OPERATOR: License# _____
 Name: _____
 Address 1: _____
 Address 2: _____
 City: _____ State: _____ Zip: _____ + _____
 Contact Person: _____
 Phone: (_____) _____
 Contact Person Email: _____
 Field Contact Person: _____
 Field Contact Person Phone: (_____) _____

API No. 15- _____
 Spot Description: _____
 _____ - _____ - _____ - _____ Sec. _____ Twp. _____ S. R. _____ E W
 _____ feet from N / S Line of Section
 _____ feet from E / W Line of Section
 GPS Location: Lat: _____, Long: _____
(e.g. xx.xxxxx) (e.g. -xxx.xxxxx)
 Datum: NAD27 NAD83 WGS84
 County: _____ Elevation: _____ GL KB
 Lease Name: _____ Well #: _____
 Well Type: (check one) Oil Gas OG WSW Other: _____
 SWD Permit #: _____ ENHR Permit #: _____
 Gas Storage Permit #: _____
 Spud Date: _____ Date Shut-In: _____

	Conductor	Surface	Production	Intermediate	Liner	Tubing
Size						
Setting Depth						
Amount of Cement						
Top of Cement						
Bottom of Cement						

Casing Fluid Level from Surface: _____ How Determined? _____ Date: _____
 Casing Squeeze(s): _____ to _____ w / _____ sacks of cement, _____ to _____ w / _____ sacks of cement. Date: _____
(top) (bottom) (top) (bottom)
 Do you have a valid Oil & Gas Lease? Yes No
 Depth and Type: Junk in Hole at _____ Tools in Hole at _____ Casing Leaks: Yes No Depth of casing leak(s): _____
(depth) (depth)
 Type Completion: ALT. I ALT. II Depth of: DV Tool: _____ w / _____ sacks of cement Port Collar: _____ w / _____ sack of cement
(depth) (depth)
 Packer Type: _____ Size: _____ Inch Set at: _____ Feet
 Total Depth: _____ Plug Back Depth: _____ Plug Back Method: _____

Geological Data:

Formation Name	Formation Top	Formation Base	Completion Information
1. _____	At: _____	to _____ Feet	Perforation Interval _____ to _____ Feet or Open Hole Interval _____ to _____ Feet
2. _____	At: _____	to _____ Feet	Perforation Interval _____ to _____ Feet or Open Hole Interval _____ to _____ Feet

UNDER PENALTY OF PERJURY I HEREBY ATTEST THAT THE INFORMATION CONTAINED HEREIN IS TRUE AND CORRECT TO THE BEST OF MY KNOWLEDGE

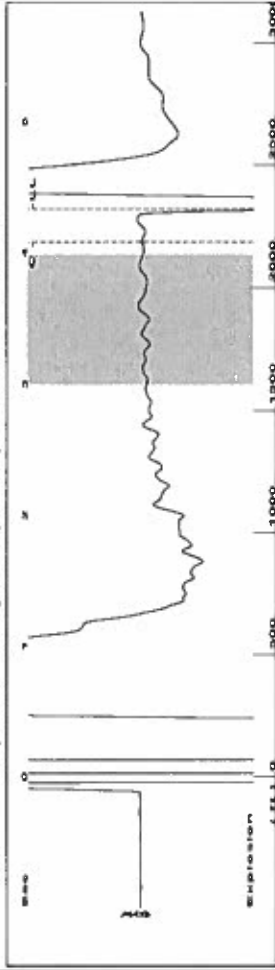
Submitted Electronically

Do NOT Write in This Space - KCC USE ONLY	Date Tested: _____	Results: _____	Date Plugged: _____	Date Repaired: _____	Date Put Back in Service: _____
	Review Completed by: _____ Comments: _____				
TA Approved: <input type="checkbox"/> Yes <input type="checkbox"/> Denied Date: _____					

Mail to the Appropriate KCC Conservation Office:

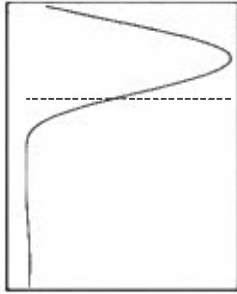
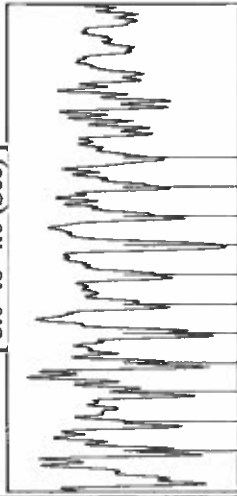
	KCC District Office #1 - 210 E. Frontview, Suite A, Dodge City, KS 67801	Phone 620.682.7933
	KCC District Office #2 - 3450 N. Rock Road, Building 600, Suite 601, Wichita, KS 67226	Phone 316.337.7400
	KCC District Office #3 - 137 E. 21st St., Chanute, KS 66720	Phone 620.902.6450
	KCC District Office #4 - 2301 E. 13th Street, Hays, KS 67601-2651	Phone 785.261.6250

Group: TAD Well: garden city L-5 (acquired on: 04/13/19 11:58:13)



Filter Type High Pass Automatic Collar Count Yes Time 4.333 sec
 Manual Acoustic Veloc 1051.41 ft/s Manual JTS/sec 16.5837 Joints 73.208 Jts
 Depth 2320.69 ft

[3.0 to 4.0 (Sec)]

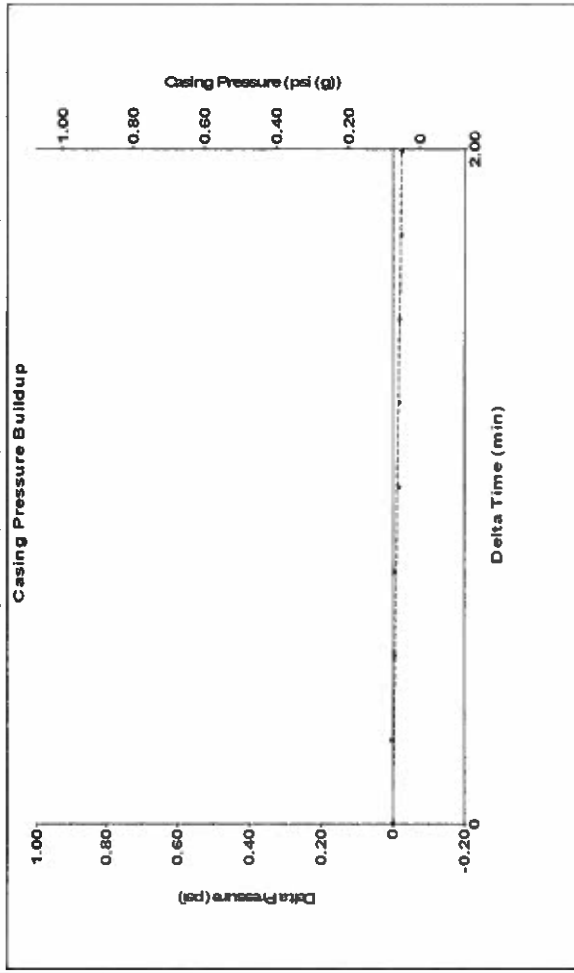


Analysis Method: Automatic

Group: TAD Well: garden city L-5 (acquired on: 04/13/19 11:58:13)

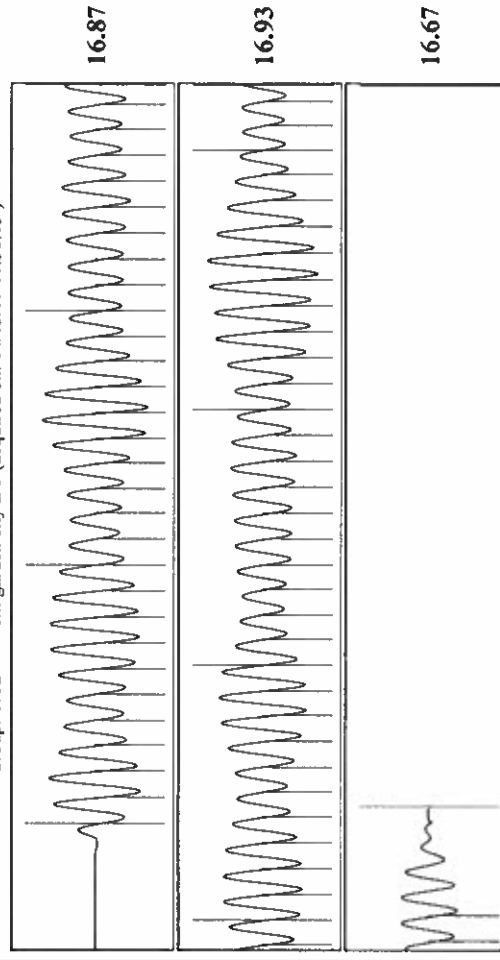
Production Current	Potential	Casing Pressure	Producing
Oil - * -	BBL/D - * -	0.1 psi (g)	Annular Gas Flow 0 Mscf/D
Water - * -	BBL/D - * -	Casing Pressure Buildup -0.024 psi	% Liquid 100 %
Gas - * -	Mscf/D - * -	2.00 min	
IPR Method Vogel	Gas/Liquid Interface Pressure	1.2 psi (g)	Pump Intake 786.6 psi (g)
PBHP/SBHP - * -			Producing BHP 881.6 psi (g)
Production Efficiency 0.0			Static BHP - * - psi (g)
Oil 40 deg API	Liquid Level Depth		
Water 1.05 Sp Gr H2O	2320.69 ft		
Gas 0.91 Sp Gr AIR	Pump Intake Depth		
Acoustic Velocity 1071.17 ft/s	4686.00 ft		
	Formation Depth		
	4895.00 ft		
Formation Submergence			
Total Gaseous Liquid Column HT (TVD) 2365 ft			
Equivalent Gas Free Liquid HT (TVD) 2365 ft			
Acoustic Test			

Group: TAD Well: garden city L-5 (acquired on: 04/13/19 11:58:13)



Change in Pressure -0.02 psi PT 6902 Range
 Change in Time 2.00 min

Group: TAD Well: garden city L-5 (acquired on: 04/13/19 11:58:13)



Acoustic Velocity 1071.17 ft/s Joints counted 64
 Joints Per Second 16.8955 Jts/sec Joints to liquid level 73.208
 Depth to liquid level 2320.69 ft Filter Width 14.5837
 Automatic Collar Count Yes Time to 1st Collar 0.292 4.08

Conservation Division
District Office No. 1
210 E. Frontview, Suite A
Dodge City, KS 67801



Phone: 620-682-7933
<http://kcc.ks.gov/>

Dwight D. Keen, Chair
Shari Feist Albrecht, Commissioner
Jay Scott Emler, Commissioner

Laura Kelly, Governor

May 07, 2019

Katherine McClurkan
Merit Energy Company, LLC
13727 Noel Road, Suite 1200
Dallas, TX 75240

Re: Temporary Abandonment
API 15-055-21314-00-01
Garden City L 5
NE/4 Sec.34-23S-34W
Finney County, Kansas

Dear Katherine McClurkan:

"Your temporary abandonment (TA) application for the well listed above has been approved. In accordance with K.A.R. 82-3-111 the TA status of this well will expire 05/07/2020.

- * If you return this well to service or plug it, please notify the District Office.
- * If you sell this well you are required to file a Transfer of Operator form, T-1.
- * If the well will remain temporarily abandoned, you must submit a new TA application, CP-111, before 05/07/2020.

You may contact me at the number above if you have questions.

Very truly yours,

Michael Maier"