

KANSAS CORPORATION COMMISSION
OIL & GAS CONSERVATION DIVISION

TEMPORARY ABANDONMENT WELL APPLICATION

OPERATOR: License#
Name:
Address 1:
Address 2:
City: State: Zip:
Contact Person:
Phone:
Contact Person Email:
Field Contact Person:
Field Contact Person Phone:

API No. 15-
Spot Description:
Sec. Twp. S. R.
GPS Location: Lat: Long:
Datum: NAD27 NAD83 WGS84
County: Elevation:
Lease Name: Well #:
Well Type: Oil Gas OG WSW Other:
SWD Permit #: ENHR Permit #:
Gas Storage Permit #:
Spud Date: Date Shut-In:

Table with 7 columns: Conductor, Surface, Production, Intermediate, Liner, Tubing. Rows include Size, Setting Depth, Amount of Cement, Top of Cement, Bottom of Cement.

Casing Fluid Level from Surface: How Determined? Date:
Casing Squeeze(s): to w / sacks of cement, to w / sacks of cement. Date:
Do you have a valid Oil & Gas Lease? Yes No
Depth and Type: Junk in Hole at Tools in Hole at Casing Leaks: Yes No Depth of casing leak(s):
Type Completion: ALT. I ALT. II Depth of: DV Tool: w / sacks of cement Port Collar: w / sack of cement
Packer Type: Size: Inch Set at: Feet
Total Depth: Plug Back Depth: Plug Back Method:

Geological Data:

Table with 4 columns: Formation Name, Formation Top, Formation Base, Completion Information. Rows 1 and 2.

UNDER PENALTY OF PERJURY I HEREBY ATTEST THAT THE INFORMATION CONTAINED HEREIN IS TRUE AND CORRECT TO THE BEST OF MY KNOWLEDGE

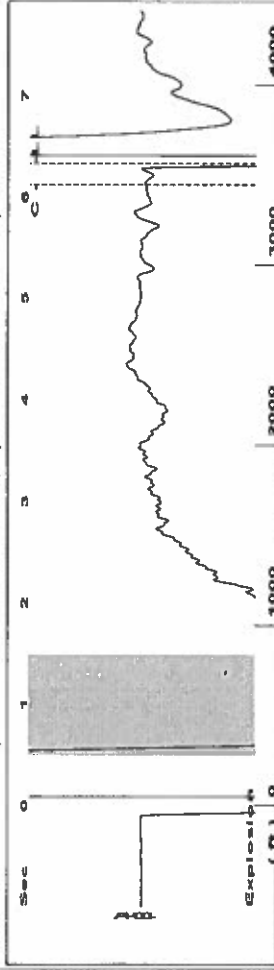
Submitted Electronically

Do NOT Write in This Space - KCC USE ONLY
Date Tested: Results: Date Plugged: Date Repaired: Date Put Back in Service:
Review Completed by: Comments:
TA Approved: Yes Denied Date:

Mail to the Appropriate KCC Conservation Office:

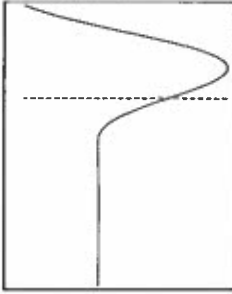
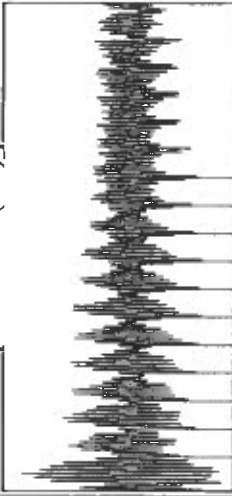
Table with 3 columns: District Office #, Address, Phone. Rows 1-4.

Group: route 6 Well: Maude Hands (acquired on: 04/11/19 08:23:38)

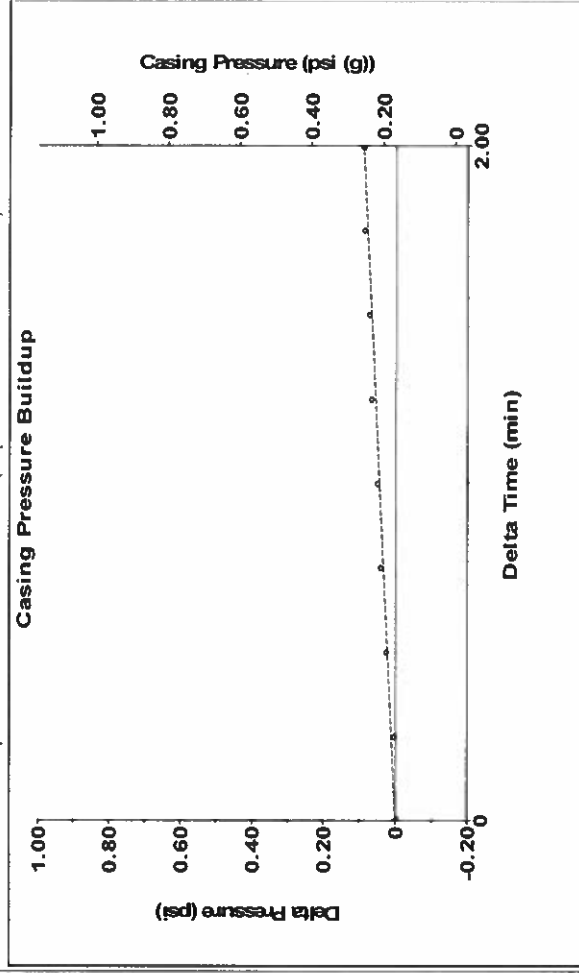


Filter Type High Pass Automatic Collar Count Yes Time 6.328 sec
 Manual Acoustic Veloc 1104.53 ft/s Manual JTS/sec 17.4216 Joints 112.459 Jts
 Depth 3564.96 ft

0.5 to 1.5 (Sec)



Group: route 6 Well: Maude Hands (acquired on: 04/11/19 08:23:38)



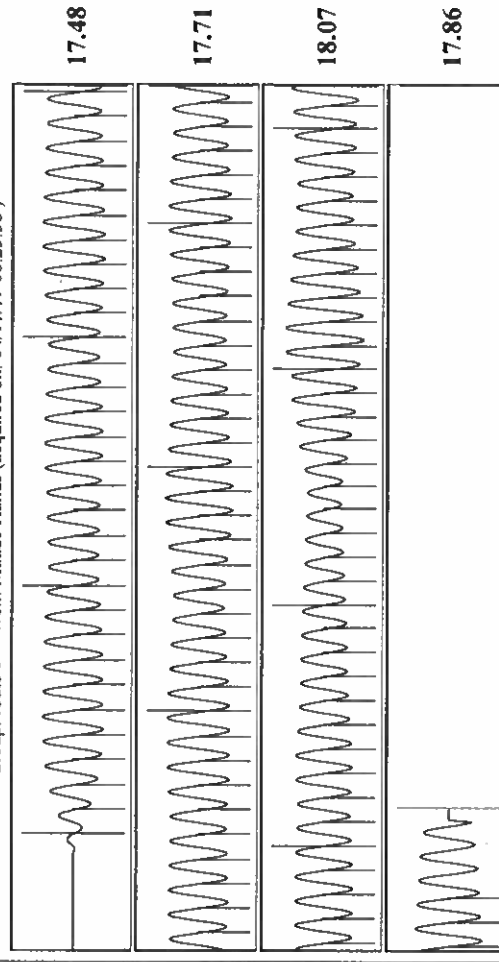
Change in Pressure 0.09 psi PT 6902 Range
 Change in Time 2.00 min

Analysis Method: Automatic

Group: route 6 Well: Maude Hands (acquired on: 04/11/19 08:23:38)

Production	Potential	Casing Pressure	Producing
Oil -*- BBL/D	0.2 psi (g)	0.2 psi (g)	Annular
Water -*- BBL/D	Casing Pressure Buildup	Casing Pressure Buildup	Gas Flow 2 Mscf/D
Gas -*- Mscf/D	0.1 psi	0.1 psi	% Liquid 94 %
IPR Method Vogel	2.00 min	Gas/Liquid Interface Pressure	Pump Intake 634.0 psi (g)
PBHP/SBHP -*-	1.8 psi (g)	Liquid Level Depth	Producing BHP 614.0 psi (g)
Production Efficiency 0.0		3564.96 ft	Static BHP -*- psi (g)
Oil 40 deg API		Pump Intake Depth	
Water 1.05 Sp.Gr.H2O		5045.00 ft	
Gas 0.86 Sp.Gr.AIR		Formation Depth	
Acoustic Velocity 1126.73 ft/s		5001.00 ft	
Formation Submergence			
Total Gaseous Liquid Column HT (TVD)	1480 ft		
Equivalent Gas Free Liquid HT (TVD)	1389 ft		
Acoustic Test			

Group: route 6 Well: Maude Hands (acquired on: 04/11/19 08:23:38)



Acoustic Velocity 1126.73 ft/s Joints counted 104
 Joints Per Second 17.7717 jts/sec Joints to liquid level 112.459
 Depth to liquid level 3564.96 ft Filter Width 15.4216
 Automatic Collar Count Yes Time to 1st Collar 0.268 6.12

Conservation Division
District Office No. 1
210 E. Frontview, Suite A
Dodge City, KS 67801



Phone: 620-682-7933
<http://kcc.ks.gov/>

Dwight D. Keen, Chair
Shari Feist Albrecht, Commissioner
Jay Scott Emler, Commissioner

Laura Kelly, Governor

May 07, 2019

Janna Burton
Merit Energy Company, LLC
13727 Noel Road, Suite 1200
Dallas, TX 75240

Re: Temporary Abandonment
API 15-055-22336-00-00
Maude Hands 2-4
SE/4 Sec.04-26S-33W
Finney County, Kansas

Dear Janna Burton:

"Your temporary abandonment (TA) application for the well listed above has been approved. In accordance with K.A.R. 82-3-111 the TA status of this well will expire 05/07/2020.

- * If you return this well to service or plug it, please notify the District Office.
- * If you sell this well you are required to file a Transfer of Operator form, T-1.
- * If the well will remain temporarily abandoned, you must submit a new TA application, CP-111, before 05/07/2020.

You may contact me at the number above if you have questions.

Very truly yours,

Michael Maier"