

KANSAS CORPORATION COMMISSION
OIL & GAS CONSERVATION DIVISION

TEMPORARY ABANDONMENT WELL APPLICATION

OPERATOR: License#
Name:
Address 1:
Address 2:
City: State: Zip:
Contact Person:
Phone:
Contact Person Email:
Field Contact Person:
Field Contact Person Phone:

API No. 15-
Spot Description:
Sec. Twp. S. R.
GPS Location: Lat: Long:
Datum: NAD27 NAD83 WGS84
County: Elevation:
Lease Name: Well #:
Well Type: Oil Gas OG WSW Other:
SWD Permit #: ENHR Permit #:
Gas Storage Permit #:
Spud Date: Date Shut-In:

Table with 7 columns: Conductor, Surface, Production, Intermediate, Liner, Tubing. Rows include Size, Setting Depth, Amount of Cement, Top of Cement, Bottom of Cement.

Casing Fluid Level from Surface: How Determined? Date:
Casing Squeeze(s): to w / sacks of cement, to w / sacks of cement. Date:
Do you have a valid Oil & Gas Lease? Yes No
Depth and Type: Junk in Hole at Tools in Hole at Casing Leaks: Yes No Depth of casing leak(s):
Type Completion: ALT. I ALT. II Depth of: DV Tool: w / sacks of cement Port Collar: w / sack of cement
Packer Type: Size: Inch Set at: Feet
Total Depth: Plug Back Depth: Plug Back Method:

Geological Data:

Table with 4 columns: Formation Name, Formation Top, Formation Base, Completion Information. Rows 1 and 2.

UNDER PENALTY OF PERJURY I HEREBY ATTEST THAT THE INFORMATION CONTAINED HEREIN IS TRUE AND CORRECT TO THE BEST OF MY KNOWLEDGE

Submitted Electronically

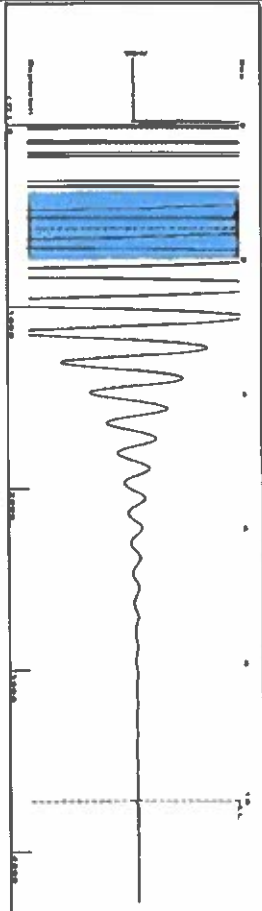
Do NOT Write in This Space - KCC USE ONLY
Date Tested: Results: Date Plugged: Date Repaired: Date Put Back in Service:
Review Completed by: Comments:
TA Approved: Yes Denied Date:

Mail to the Appropriate KCC Conservation Office:

Table with 2 columns: Office Address, Phone. Rows for District Office #1, #2, #3, #4.

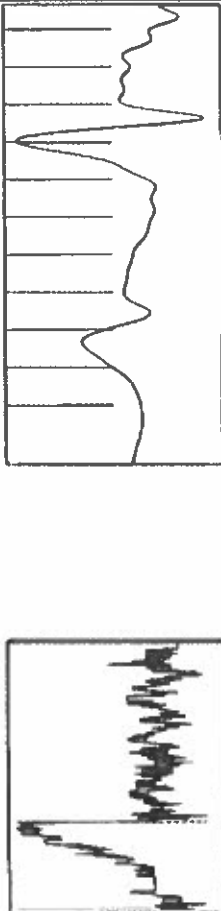


Group: MyWells Well: Ellis 1-31 (acquired on: 04/26/19 10:10:04)



Filter Type: High Pass
 Manual Acoustic Velocity: 74.115 N/s
 Automatic Collar Count: Yes
 Manual JTS/sec: 12.21
 Time: 10.05 sec
 Joints: 117.25 J/s
 Depth: 3716.83 ft

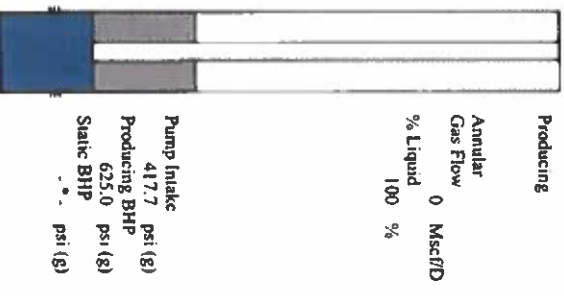
1.0 to 2.0 (Sec)



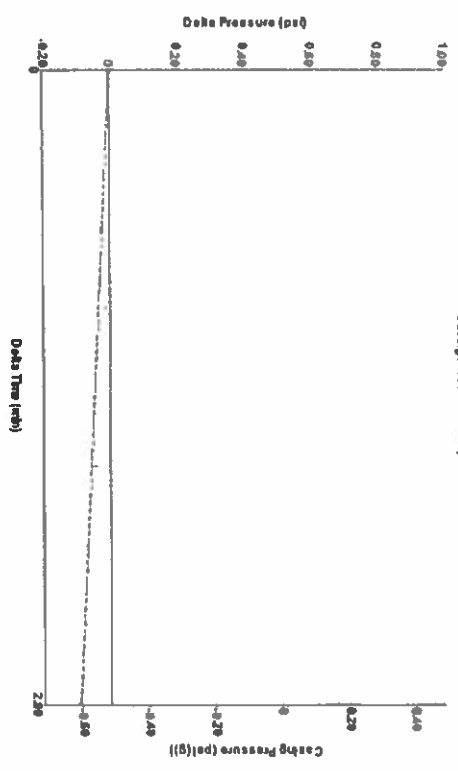
Analysis Method: Automatic

Group: MyWells Well: Ellis 1-31 (acquired on: 04/26/19 10:10:04)

Production	Potential	Casing Pressure	Producing
Current	BB/LD	-0.5 psi (g)	Annular
Oil	BB/LD	Casing Pressure Buildup	Gas Flow
Water	BB/LD	-0.093 psi	0 Mscf/D
Gas	Misc/D	2.00 min	% Liquid
IPR Method	Vogel	Gas/Liquid Interface Pressure	100 %
PBH/PSBHP	0.0	1.9 psi (g)	
Production Efficiency		Liquid Level Depth	
		3716.83 ft	
Oil	40 deg API	Pump Intake Depth	
Water	1.05 Sp.Gr./H ₂ O	4944.00 ft	
Gas	1.22 Sp.Gr./AIR	Pump Intake	
Acoustic Velocity	739.667 ft/s	Formation Depth	
		5400.00 ft	

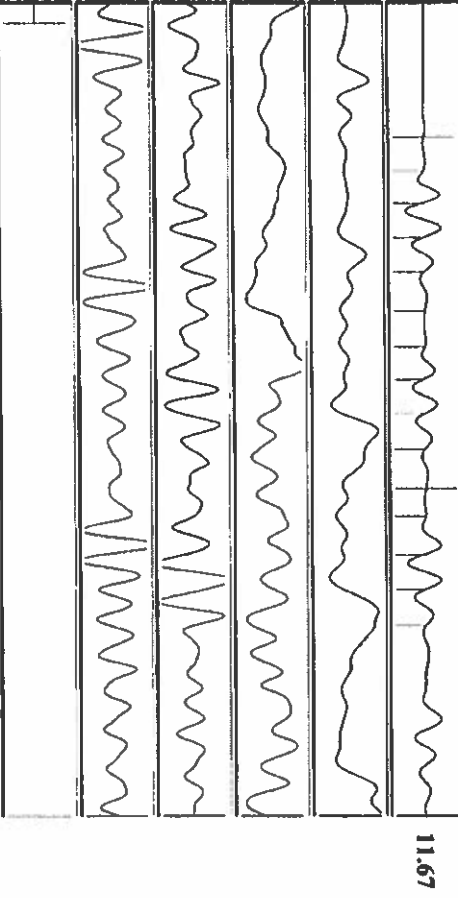


Group: MyWells Well: Ellis 1-31 (acquired on: 04/26/19 10:10:04)



Change in Pressure: -0.09 psi
 Change in Time: 2.00 min
 PT9424
 Range: 0 - ? psi

Group: MyWells Well: Ellis 1-31 (acquired on: 04/26/19 10:10:04)



11.67

Acoustic Velocity	739.667 ft/s	Joints counted	14
Joints Per Second	11.6667 JTS/sec	Joints to liquid level	117.25
Depth to liquid level	3716.83 ft	Filter Width	10.21
Automatic Collar Count	Yes	Time to 1st Collar	0.328

Conservation Division
District Office No. 1
210 E. Frontview, Suite A
Dodge City, KS 67801



Phone: 620-682-7933
<http://kcc.ks.gov/>

Dwight D. Keen, Chair
Shari Feist Albrecht, Commissioner
Jay Scott Emler, Commissioner

Laura Kelly, Governor

May 07, 2019

Katherine McClurkan
Merit Energy Company, LLC
13727 Noel Road, Suite 1200
Dallas, TX 75240

Re: Temporary Abandonment
API 15-129-20877-00-00
Ellis 1-31
NE/4 Sec.31-31S-40W
Morton County, Kansas

Dear Katherine McClurkan:

"Your temporary abandonment (TA) application for the well listed above has been approved. In accordance with K.A.R. 82-3-111 the TA status of this well will expire 05/07/2020.

- * If you return this well to service or plug it, please notify the District Office.
- * If you sell this well you are required to file a Transfer of Operator form, T-1.
- * If the well will remain temporarily abandoned, you must submit a new TA application, CP-111, before 05/07/2020.

You may contact me at the number above if you have questions.

Very truly yours,

Michael Maier"