

KANSAS CORPORATION COMMISSION  
OIL & GAS CONSERVATION DIVISION

TEMPORARY ABANDONMENT WELL APPLICATION

All blanks must be complete

OPERATOR: License# \_\_\_\_\_  
 Name: \_\_\_\_\_  
 Address 1: \_\_\_\_\_  
 Address 2: \_\_\_\_\_  
 City: \_\_\_\_\_ State: \_\_\_\_\_ Zip: \_\_\_\_\_ + \_\_\_\_\_  
 Contact Person: \_\_\_\_\_  
 Phone:( \_\_\_\_\_ ) \_\_\_\_\_  
 Contact Person Email: \_\_\_\_\_  
 Field Contact Person: \_\_\_\_\_  
 Field Contact Person Phone: ( \_\_\_\_\_ ) \_\_\_\_\_

API No. 15- \_\_\_\_\_  
 Spot Description: \_\_\_\_\_  
 \_\_\_\_\_ - \_\_\_\_\_ - \_\_\_\_\_ - \_\_\_\_\_ Sec. \_\_\_\_\_ Twp. \_\_\_\_\_ S. R. \_\_\_\_\_  E  W  
 \_\_\_\_\_ feet from  N /  S Line of Section  
 \_\_\_\_\_ feet from  E /  W Line of Section  
 GPS Location: Lat: \_\_\_\_\_, Long: \_\_\_\_\_  
(e.g. xx.xxxxx) (e.g. -xxx.xxxxx)  
 Datum:  NAD27  NAD83  WGS84  
 County: \_\_\_\_\_ Elevation: \_\_\_\_\_  GL  KB  
 Lease Name: \_\_\_\_\_ Well #: \_\_\_\_\_  
 Well Type: (check one)  Oil  Gas  OG  WSW  Other: \_\_\_\_\_  
 SWD Permit #: \_\_\_\_\_  ENHR Permit #: \_\_\_\_\_  
 Gas Storage Permit #: \_\_\_\_\_  
 Spud Date: \_\_\_\_\_ Date Shut-In: \_\_\_\_\_

	Conductor	Surface	Production	Intermediate	Liner	Tubing
Size						
Setting Depth						
Amount of Cement						
Top of Cement						
Bottom of Cement						

Casing Fluid Level from Surface: \_\_\_\_\_ How Determined? \_\_\_\_\_ Date: \_\_\_\_\_  
 Casing Squeeze(s): \_\_\_\_\_ to \_\_\_\_\_ w / \_\_\_\_\_ sacks of cement, \_\_\_\_\_ to \_\_\_\_\_ w / \_\_\_\_\_ sacks of cement. Date: \_\_\_\_\_  
(top) (bottom) (top) (bottom)  
 Do you have a valid Oil & Gas Lease?  Yes  No  
 Depth and Type:  Junk in Hole at \_\_\_\_\_  Tools in Hole at \_\_\_\_\_ Casing Leaks:  Yes  No Depth of casing leak(s): \_\_\_\_\_  
(depth) (depth)  
 Type Completion:  ALT. I  ALT. II Depth of:  DV Tool: \_\_\_\_\_ w / \_\_\_\_\_ sacks of cement  Port Collar: \_\_\_\_\_ w / \_\_\_\_\_ sack of cement  
(depth) (depth)  
 Packer Type: \_\_\_\_\_ Size: \_\_\_\_\_ Inch Set at: \_\_\_\_\_ Feet  
 Total Depth: \_\_\_\_\_ Plug Back Depth: \_\_\_\_\_ Plug Back Method: \_\_\_\_\_

**Geological Data:**

Formation Name	Formation Top	Formation Base	Completion Information
1. _____	At: _____	to _____ Feet	Perforation Interval _____ to _____ Feet or Open Hole Interval _____ to _____ Feet
2. _____	At: _____	to _____ Feet	Perforation Interval _____ to _____ Feet or Open Hole Interval _____ to _____ Feet

UNDER PENALTY OF PERJURY I HEREBY ATTEST THAT THE INFORMATION CONTAINED HEREIN IS TRUE AND CORRECT TO THE BEST OF MY KNOWLEDGE

Submitted Electronically

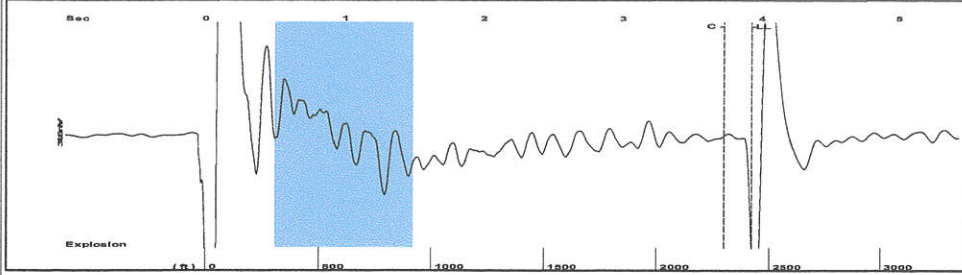
<b>Do NOT Write in This Space - KCC USE ONLY</b>	Date Tested: _____	Results: _____	Date Plugged: _____	Date Repaired: _____	Date Put Back in Service: _____
	Review Completed by: _____ Comments: _____				
TA Approved: <input type="checkbox"/> Yes <input type="checkbox"/> Denied Date: _____					

Mail to the Appropriate KCC Conservation Office:

	KCC District Office #1 - 210 E. Frontview, Suite A, Dodge City, KS 67801	Phone 620.682.7933
	KCC District Office #2 - 3450 N. Rock Road, Building 600, Suite 601, Wichita, KS 67226	Phone 316.337.7400
	KCC District Office #3 - 137 E. 21st St., Chanute, KS 66720	Phone 620.902.6450
	KCC District Office #4 - 2301 E. 13th Street, Hays, KS 67601-2651	Phone 785.261.6250

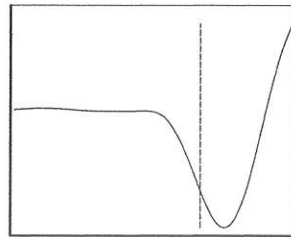
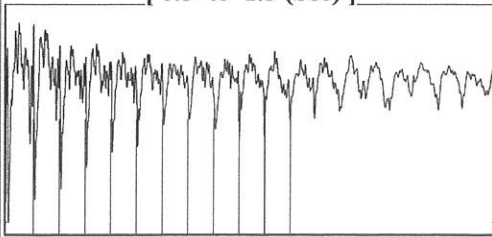
Shot qt 500 PSI

Group: TA'D WELLS Well: CRAYTON A-5 (acquired on: 04/25/19 13:05:39)



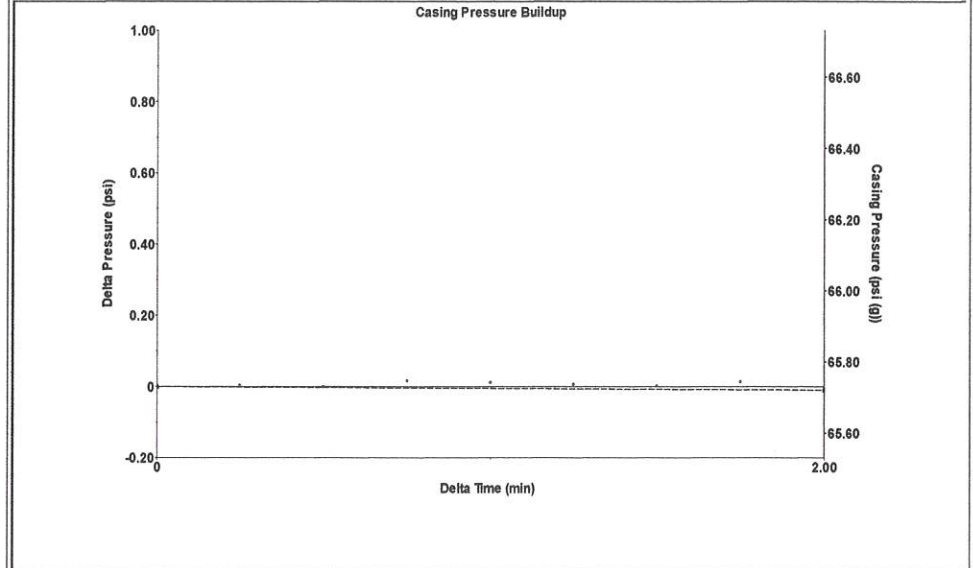
Filter Type High Pass Automatic Collar Count Yes Time 3.928 sec  
 Manual Acoustic Velo 1205.32 ft/s Manual JTS/sec 19.0114 Joints 76.4158 Jts  
 Depth 2422.38 ft

[ 0.5 to 1.5 (Sec) ]



Analysis Method: Automatic

Group: TA'D WELLS Well: CRAYTON A-5 (acquired on: 04/25/19 13:05:39)



Change in Pressure -0.01 psi PT10857  
 Range 0 - ? psi  
 Change in Time 2.00 min

Group: TA'D WELLS Well: CRAYTON A-5 (acquired on: 04/25/19 13:05:39)

Production  
 Current Potential  
 Oil - \* - BBL/D  
 Water - \* - BBL/D  
 Gas - \* - Mscf/D

IPR Method Vogel  
 PBHP/SBHP - \* -  
 Production Efficiency 0.0

Oil 40 deg.API  
 Water 1.05 Sp.Gr.H2O  
 Gas 0.76 Sp.Gr.AIR

Acoustic Velocity 1233.39 ft/s

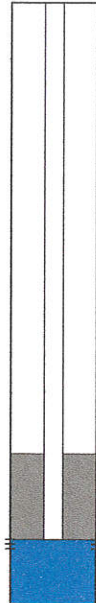
Casing Pressure 65.7 psi (g)  
 Casing Pressure Buildup -0.010 psi  
 2.00 min  
 Gas/Liquid Interface Pressure 70.9 psi (g)  
 Liquid Level Depth 2422.38 ft  
 Pump Intake Depth 2954.00 ft  
 Formation Depth 2979.00 ft

Producing  
 Annular Gas Flow 0 Mscf/D  
 % Liquid 100 %

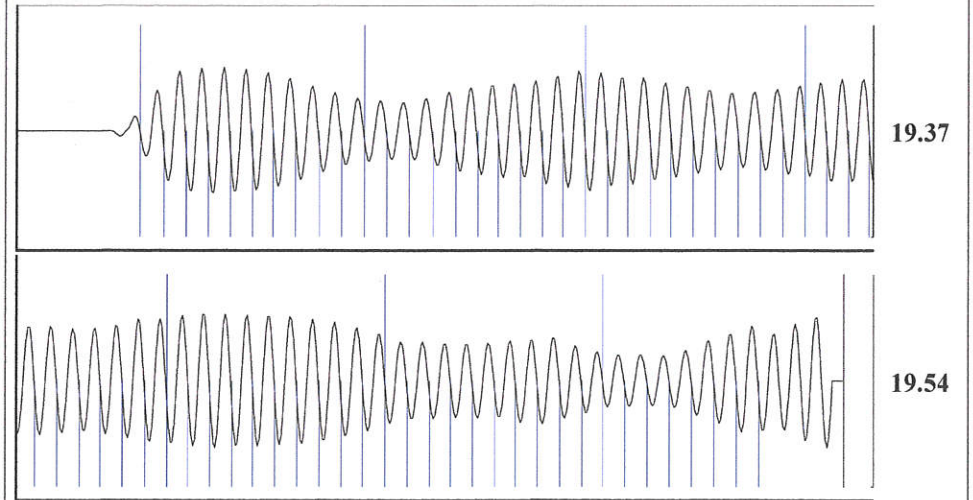
Pump Intake 250.1 psi (g)  
 Producing BHP 261.5 psi (g)  
 Static BHP - \* - psi (g)

Formation Submergence  
 Total Gaseous Liquid Column HT (TVD) 532 ft  
 Equivalent Gas Free Liquid HT (TVD) 532 ft

Acoustic Test



Group: TA'D WELLS Well: CRAYTON A-5 (acquired on: 04/25/19 13:05:39)



Acoustic Velocity 1233.39 ft/s Joints counted 67  
 Joints Per Second 19.4541 jts/sec Joints to liquid level 76.4158  
 Depth to liquid level 2422.38 ft Filter Width 17.0114 21.0114  
 Automatic Collar Count Yes Time to 1st Collar 0.284 3.728

Conservation Division  
District Office No. 1  
210 E. Frontview, Suite A  
Dodge City, KS 67801



Phone: 620-682-7933  
<http://kcc.ks.gov/>

Dwight D. Keen, Chair  
Shari Feist Albrecht, Commissioner  
Jay Scott Emler, Commissioner

Laura Kelly, Governor

May 07, 2019

Katherine McClurkan  
Merit Energy Company, LLC  
13727 Noel Road, Suite 1200  
Dallas, TX 75240

Re: Temporary Abandonment  
API 15-129-21747-00-01  
Crayton A 5  
SW/4 Sec.18-32S-39W  
Morton County, Kansas

Dear Katherine McClurkan:

"Your temporary abandonment (TA) application for the well listed above has been approved. In accordance with K.A.R. 82-3-111 the TA status of this well will expire 05/07/2020.

- \* If you return this well to service or plug it, please notify the District Office.
- \* If you sell this well you are required to file a Transfer of Operator form, T-1.
- \* If the well will remain temporarily abandoned, you must submit a new TA application, CP-111, before 05/07/2020.

You may contact me at the number above if you have questions.

Very truly yours,

Michael Maier"