

KANSAS CORPORATION COMMISSION
OIL & GAS CONSERVATION DIVISION

TEMPORARY ABANDONMENT WELL APPLICATION

OPERATOR: License#
Name:
Address 1:
Address 2:
City: State: Zip:
Contact Person:
Phone:
Contact Person Email:
Field Contact Person:
Field Contact Person Phone:

API No. 15-
Spot Description:
Sec. Twp. S. R.
GPS Location: Lat, Long
Datum: NAD27, NAD83, WGS84
County: Elevation:
Lease Name: Well #:
Well Type: Oil, Gas, OG, WSW, Other
SWD Permit #: ENHR Permit #:
Gas Storage Permit #:
Spud Date: Date Shut-In:

Table with 7 columns: Conductor, Surface, Production, Intermediate, Liner, Tubing. Rows include Size, Setting Depth, Amount of Cement, Top of Cement, Bottom of Cement.

Casing Fluid Level from Surface: How Determined? Date:
Casing Squeeze(s): to w / sacks of cement, to w / sacks of cement. Date:
Do you have a valid Oil & Gas Lease? Yes No
Depth and Type: Junk in Hole at Tools in Hole at Casing Leaks: Yes No Depth of casing leak(s):
Type Completion: ALT. I ALT. II Depth of: DV Tool: w / sacks of cement Port Collar: w / sack of cement
Packer Type: Size: Inch Set at: Feet
Total Depth: Plug Back Depth: Plug Back Method:

Geological Data:

Table with 4 columns: Formation Name, Formation Top, Formation Base, Completion Information. Rows 1 and 2.

UNDER PENALTY OF PERJURY I HEREBY ATTEST THAT THE INFORMATION CONTAINED HEREIN IS TRUE AND CORRECT TO THE BEST OF MY KNOWLEDGE

Submitted Electronically

Do NOT Write in This Space - KCC USE ONLY
Date Tested: Results: Date Plugged: Date Repaired: Date Put Back in Service:
Review Completed by: Comments:
TA Approved: Yes Denied Date:

Mail to the Appropriate KCC Conservation Office:

Table with 3 columns: District Office, Address, Phone. Rows for District Office #1, #2, #3, #4.

General

Well ID 125011
 Well Birchenough 1
 Company Sandridge
 Operator - * -
 Lease Name Birchenough 1
 Elevation 1292.00 ft
 Production Method Other
 Dataset Description

Comment

Surface Unit

Manufacturer - * -
 Unit Class Conventional
 Unit API Number - * -
 Measured Stroke Length 100.000 in
 Rotation CW
 Counter Balance Effect (Weights Level) - * - Klb
 Weight Of Counter Weights 2000 lb

Prime Mover

Motor Type Electric
 Rated HP - * - HP
 Run Time 24 hr/day
 MFG/Comment - * -

Electric Motor Parameters

Rated Full Load AMPS - * -
 Rated Full Load RPM - * -
 Synchronous RPM 1200
 Voltage - * -
 Hertz 60
 Phase 3
 Power Consumption 5
 Power Demand 8 \$/KW

Tubulars

Tubing OD 2.375 in
 Casing OD 5.500 in
 Average Joint Length 31.700 ft
 Anchor Depth - * - ft
 Kelly Bushing 5.00 ft

Pump

Plunger Diameter - * - in
 Pump Intake Depth - * - ft
 **Total Rod Length > Pump Depth

Polished Rod

Polished Rod Diameter - * - in

Rod String

	Top Taper	Taper 2	Taper 3	Taper 4	Taper 5	Taper 6
Rod Type	- * -	- * -	- * -	- * -	- * -	- * -
Rod Length	- * -	- * -	- * -	- * -	- * -	- * - ft
Rod Diameter	- * -	- * -	- * -	- * -	- * -	- * - in
Rod Weight	0.0	0.0	0.0	0.0	0.0	0.0 lb

Total Rod Length 0
 Total Rod Weight 0.00

Damp Up 0.05
 Damp Down 0.05

Conditions

Pressure

Static BHP 367.8 psi (g)
 Static BHP Method Acoustic
 Static BHP Date 04/09/2019

Producing BHP 471.2 psi (g)
 Producing BHP Method Acoustic
 Producing BHP Date 04/11/2017
 Formation Depth 4422.00 ft

Surface Producing Pressures

Tubing Pressure - * - psi (g)
 Casing Pressure 0.6 psi (g)

Casing Pressure Buildup

Change in Pressure 0.5 psi
 Over Change in Time 0.75 min

Production

Oil Production 0 BBL/D
 Water Production 1 BBL/D
 Gas Production - * - Mscf/D
 Production Date 04/11/2017

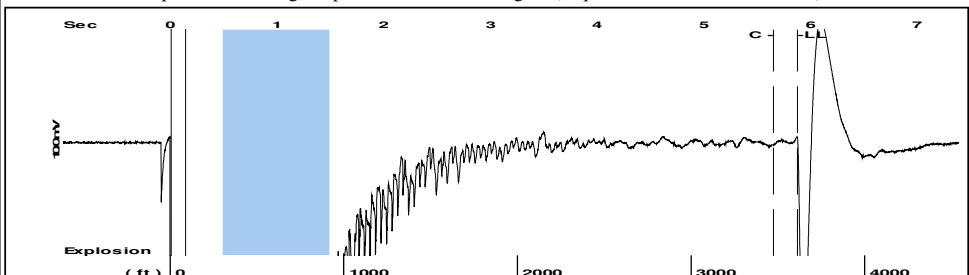
Temperatures

Surface Temperature 70 deg F
 Bottomhole Temperature 150 deg F

Fluid Properties

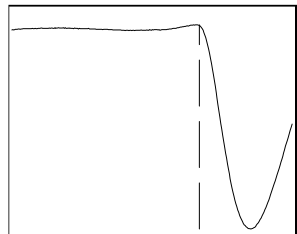
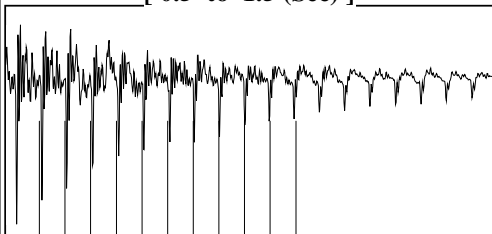
Oil API 40 deg.API
 Water Specific Gravity 1.05 Sp.Gr.H2O

Group: 2019 Sandridge Grp 3 Well: Birchenough 1 (acquired on: 04/09/19 08:29:09)



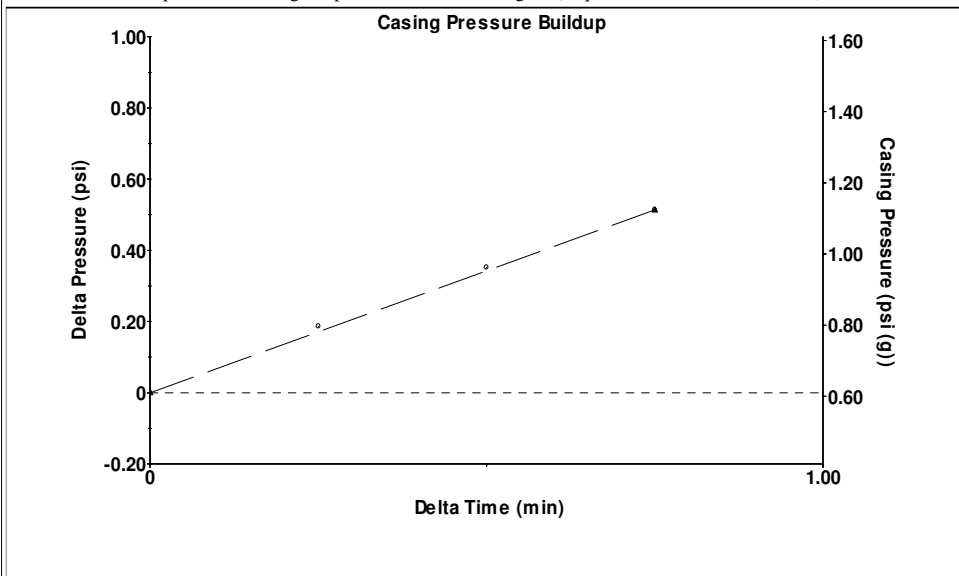
Filter Type High Pass Automatic Collar Count Yes Time 5.878 sec
Manual Acoustic Veloc 1203.04 ft/s Manual JTS/sec 18.9753 Joints 113.966 Jts
Depth 3612.71 ft

[0.5 to 1.5 (Sec)]



Analysis Method: Automatic

Group: 2019 Sandridge Grp 3 Well: Birchenough 1 (acquired on: 04/09/19 08:29:09)



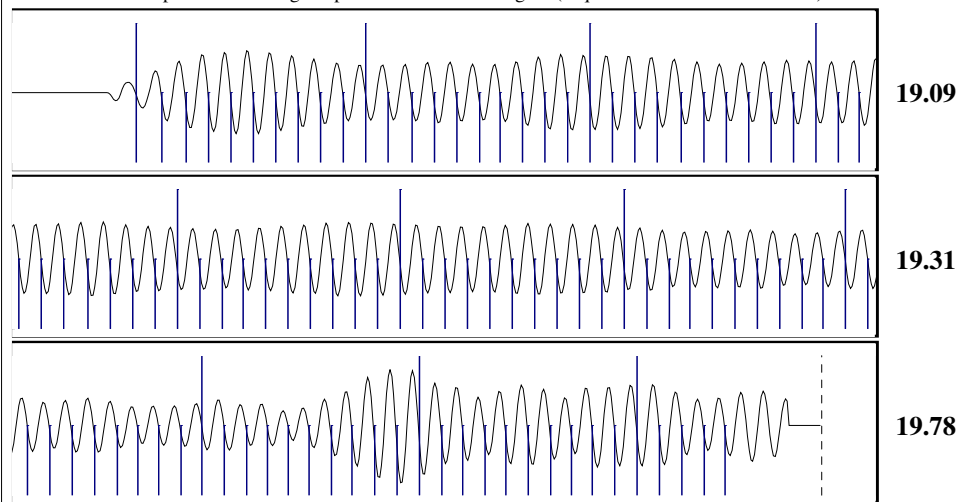
Change in Pressure 0.51 psi PT16722
Change in Time 0.75 min Range 0 - ? psi

Group: 2019 Sandridge Grp 3 Well: Birchenough 1 (acquired on: 04/09/19 08:29:09)

Production Current	Potential	Casing Pressure	Static
Oil 0	- * - BBL/D	0.6 psi (g)	
Water 1	- * - BBL/D	Casing Pressure Buildup	Oil Column Height
Gas - * -	- * - Mscf/D	0.5 psi	MD 0 ft
		0.75 min	
IPR Method	Vogel	Gas/Liquid Interface Pressure	Water Column Height
PBHP/SBHP	- * -	2.1 psi (g)	MD 804 ft
Production Efficiency	0.0		
Oil 40 deg.API		Liquid Level Depth	
Water 1.05 Sp.Gr.H2O		3612.71 ft	
Gas 0.77 Sp.Gr.AIR		Tubing Intake Depth	
		- * - ft	
Acoustic Velocity	1229.23 ft/s	Formation Depth	
		4422.00 ft	
		Static BHP	
		367.8 psi (g)	

Birchenough 1

Group: 2019 Sandridge Grp 3 Well: Birchenough 1 (acquired on: 04/09/19 08:29:09)



Acoustic Velocity	1229.23 ft/s	Joints counted	104
Joints Per Second	19.3885 jts/sec	Joints to liquid level	113.966
Depth to liquid level	3612.71 ft	Filter Width	16.9753 20.9753
Automatic Collar Count	Yes	Time to 1st Collar	0.288 5.652

May 14, 2019

Laci Bevans
SandRidge Exploration and Production LLC
123 ROBERT S. KERR AVE
OKLAHOMA CITY, OK 73102-6406

Re: Temporary Abandonment
API 15-077-20167-00-00
BIRCHENOUGH 1
SE/4 Sec.27-33S-06W
Harper County, Kansas

Dear Laci Bevans:

"Your temporary abandonment (TA) application for the well listed above has been approved. In accordance with K.A.R. 82-3-111 the TA status of this well will expire 05/14/2020.

- * If you return this well to service or plug it, please notify the District Office.
- * If you sell this well you are required to file a Transfer of Operator form, T-1.
- * If the well will remain temporarily abandoned, you must submit a new TA application, CP-111, before 05/14/2020.

You may contact me at the number above if you have questions.

Very truly yours,

Steve VanGieson"