

KANSAS CORPORATION COMMISSION
OIL & GAS CONSERVATION DIVISION

TEMPORARY ABANDONMENT WELL APPLICATION

OPERATOR: License#
Name:
Address 1:
Address 2:
City: State: Zip:
Contact Person:
Phone:
Contact Person Email:
Field Contact Person:
Field Contact Person Phone:

API No. 15-
Spot Description:
Sec. Twp. S. R.
GPS Location: Lat: Long:
Datum: NAD27 NAD83 WGS84
County: Elevation:
Lease Name: Well #:
Well Type: Oil Gas OG WSW Other:
SWD Permit #: ENHR Permit #:
Gas Storage Permit #:
Spud Date: Date Shut-In:

Table with 7 columns: Conductor, Surface, Production, Intermediate, Liner, Tubing. Rows include Size, Setting Depth, Amount of Cement, Top of Cement, Bottom of Cement.

Casing Fluid Level from Surface: How Determined? Date:
Casing Squeeze(s): to w / sacks of cement, to w / sacks of cement. Date:
Do you have a valid Oil & Gas Lease? Yes No
Depth and Type: Junk in Hole at Tools in Hole at Casing Leaks: Yes No Depth of casing leak(s):
Type Completion: ALT. I ALT. II Depth of: DV Tool: w / sacks of cement Port Collar: w / sack of cement
Packer Type: Size: Inch Set at: Feet
Total Depth: Plug Back Depth: Plug Back Method:

Geological Data:

Table with 4 columns: Formation Name, Formation Top, Formation Base, Completion Information. Rows 1 and 2.

UNDER PENALTY OF PERJURY I HEREBY ATTEST THAT THE INFORMATION CONTAINED HEREIN IS TRUE AND CORRECT TO THE BEST OF MY KNOWLEDGE

Submitted Electronically

Do NOT Write in This Space - KCC USE ONLY
Date Tested: Results: Date Plugged: Date Repaired: Date Put Back in Service:
Review Completed by: Comments:
TA Approved: Yes Denied Date:

Mail to the Appropriate KCC Conservation Office:

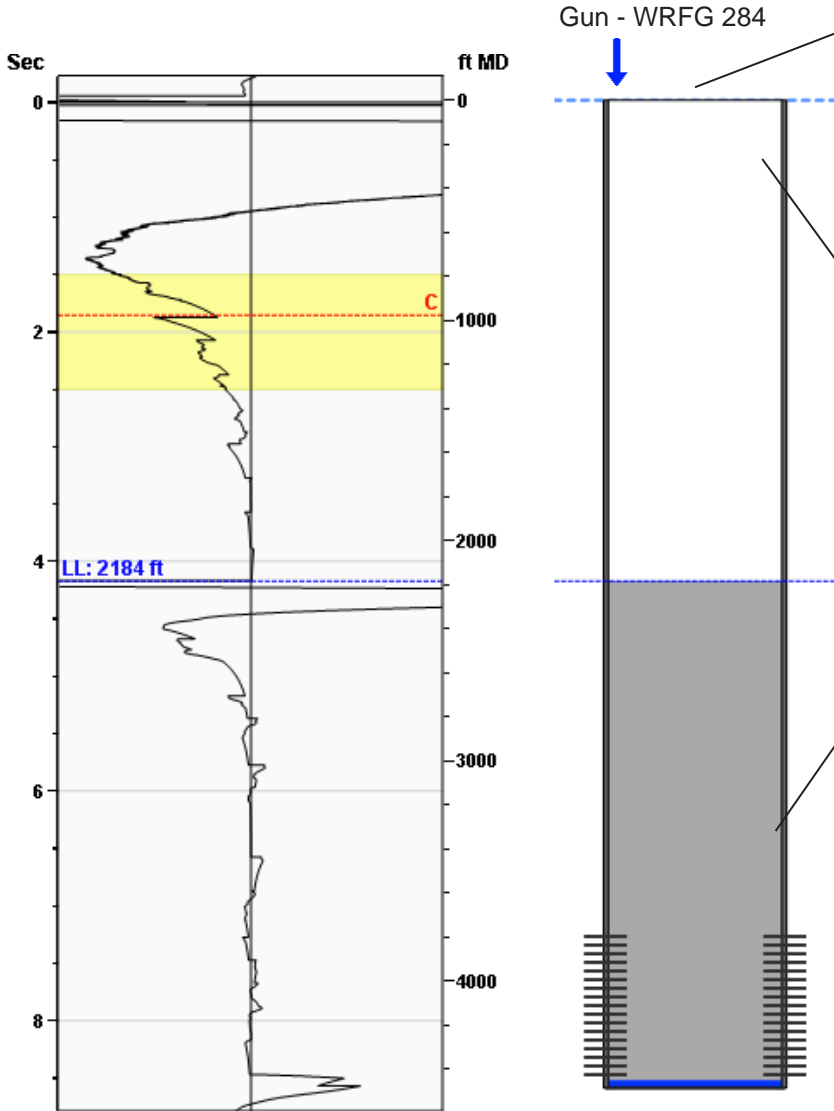
Map of Kansas with 4 numbered districts. Table with 3 columns: District, Address, Phone. Rows 1-4.

Liquid Level

2184 ft MD

Fluid Above Tubing
Gas Free Above Tubing

2266 ft TVD
2266 ft TVD



Production

Date Entered 04/22/19

	Current	Potential	
Oil	**	**	BBL/D
Water	**	**	BBL/D
Gas	**	**	Mscf/D

IPR Method Vogel
PBHP/SBHP -0.00
Producing Efficiency 0.00%

Casing Pressure

Pressure 1.5 psi (g)

Annular Gas Flow

Gas Flow *. * Mscf/D

Fluid Properties

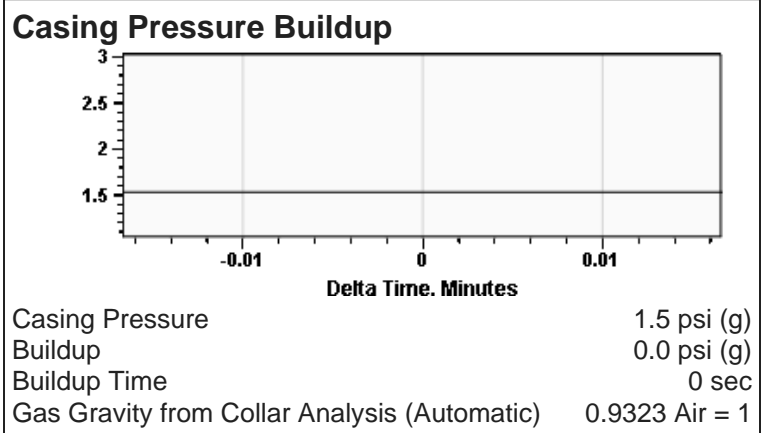
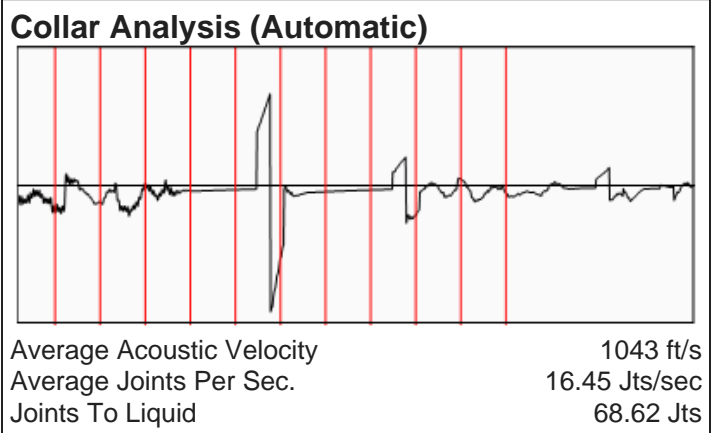
% Liquid Above Tubing 100.00%
% Liquid Below Tubing **

Depths

Tubing Depth 0 ft
Formation Depth 4450 ft

Wellbore Pressures

TIP **
PBHP 755.5 psi (g)
SBHP **
Gas/Liq Interface 2.7 psi (g)



Comments and Recommendations

Echometer Company
5001 Ditto Lane
Wichita Falls, TX 76302
(940) 767-4334
info@echometer.com

Conservation Division
District Office No. 4
2301 E. 13th Street
Hays, KS 67601-2651



Phone: 785-261-6250
Fax: 785-625-0564
<http://kcc.ks.gov/>

Dwight D. Keen, Chair
Shari Feist Albrecht, Commissioner
Jay Scott Emler, Commissioner

Laura Kelly, Governor

April 22, 2019

DRUE HERL
Infinity Oil, Inc.
1014 E. 29TH ST
HAYS, KS 67601-1902

Re: Temporary Abandonment
API 15-109-21318-00-00
ELLIS 5
SW/4 Sec.23-14S-32W
Logan County, Kansas

Dear DRUE HERL:

"Your temporary abandonment (TA) application for the well listed above has been approved. In accordance with K.A.R. 82-3-111 the TA status of this well will expire 04/22/2020.

- * If you return this well to service or plug it, please notify the District Office.
- * If you sell this well you are required to file a Transfer of Operator form, T-1.
- * If the well will remain temporarily abandoned, you must submit a new TA application, CP-111, before 04/22/2020.

You may contact me at the number above if you have questions.

Very truly yours,

RICHARD WILLIAMS "