

KANSAS CORPORATION COMMISSION
OIL & GAS CONSERVATION DIVISION

TEMPORARY ABANDONMENT WELL APPLICATION

OPERATOR: License#
Name:
Address 1:
Address 2:
City: State: Zip:
Contact Person:
Phone:
Contact Person Email:
Field Contact Person:
Field Contact Person Phone:

API No. 15-
Spot Description:
Sec. Twp. S. R.
feet from N / S Line of Section
feet from E / W Line of Section
GPS Location: Lat: , Long:
Datum: NAD27 NAD83 WGS84
County: Elevation: GL KB
Lease Name: Well #:
Well Type: (check one) Oil Gas OG WSW Other:
SWD Permit #: ENHR Permit #:
Gas Storage Permit #:
Spud Date: Date Shut-In:

Table with 7 columns: Conductor, Surface, Production, Intermediate, Liner, Tubing. Rows include Size, Setting Depth, Amount of Cement, Top of Cement, Bottom of Cement.

Casing Fluid Level from Surface: How Determined? Date:
Casing Squeeze(s): to w / sacks of cement, to w / sacks of cement. Date:
Do you have a valid Oil & Gas Lease? Yes No
Depth and Type: Junk in Hole at Tools in Hole at Casing Leaks: Yes No Depth of casing leak(s):
Type Completion: ALT. I ALT. II Depth of: DV Tool: w / sacks of cement Port Collar: w / sack of cement
Packer Type: Size: Inch Set at: Feet
Total Depth: Plug Back Depth: Plug Back Method:

Geological Date:

Table with 4 columns: Formation Name, Formation Top, Formation Base, Completion Information. Rows 1 and 2.

UNDER PENALTY OF PERJURY I HEREBY ATTEST THAT THE INFORMATION CONTAINED HEREIN IS TRUE AND CORRECT TO THE BEST OF MY KNOWLEDGE

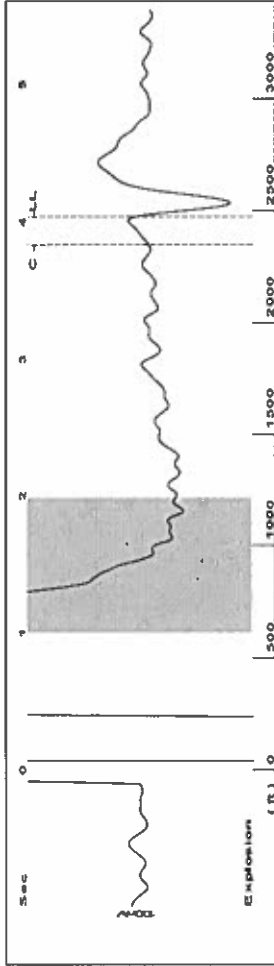
Submitted Electronically

Do NOT Write in This Space - KCC USE ONLY
Date Tested: Results: Date Plugged: Date Repaired: Date Put Back in Service:
Review Completed by: Comments:
TA Approved: Yes Denied Date:

Mail to the Appropriate KCC Conservation Office:

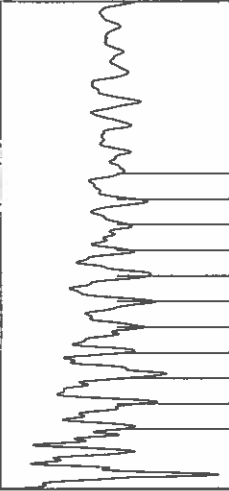
Table with 3 columns: District Office, Address, Phone. Rows for District Office #1, #2, #3, #4.

Group: TAD Well: garden city j-2 (acquired on: 04/24/19 13:22:20)



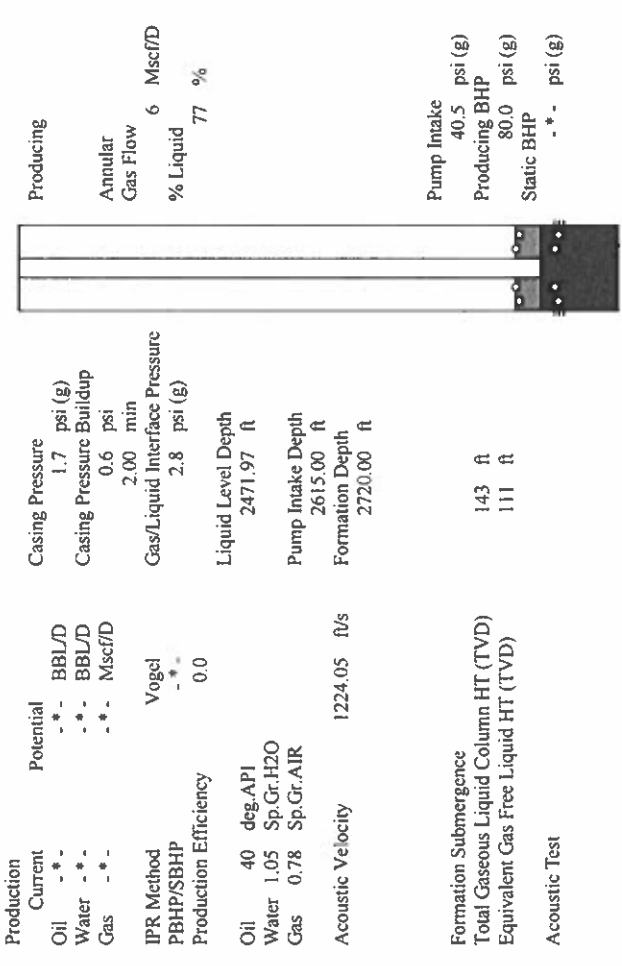
Filter Type High Pass Automatic Collar Count Yes
 Manual Acoustic Veloc(200.23 ft/s) Manual JTS/sec 19,0476

Time 4,039 sec
 Joints 78,4603 Jts
 Depth 2471.97 ft



Analysis Method: Automatic

Group: TAD Well: garden city j-2 (acquired on: 04/24/19 13:22:20)



Producing
 Annular Gas Flow 6 Mscf/D
 % Liquid 77 %

Pump Intake 40.5 psi (g)
 Producing BHP 80.0 psi (g)
 Static BHP - * - psi (g)

Potential - * - BBL/D
 Water - * - BBL/D
 Gas - * - Mscf/D

IPR Method Vogel
 PBHP/SBHP - * -
 Production Efficiency 0.0

Oil 40 deg.API
 Water 1.05 Sp.Gr.H2O
 Gas 0.78 Sp.Gr.AIR

Acoustic Velocity 1224.05 ft/s

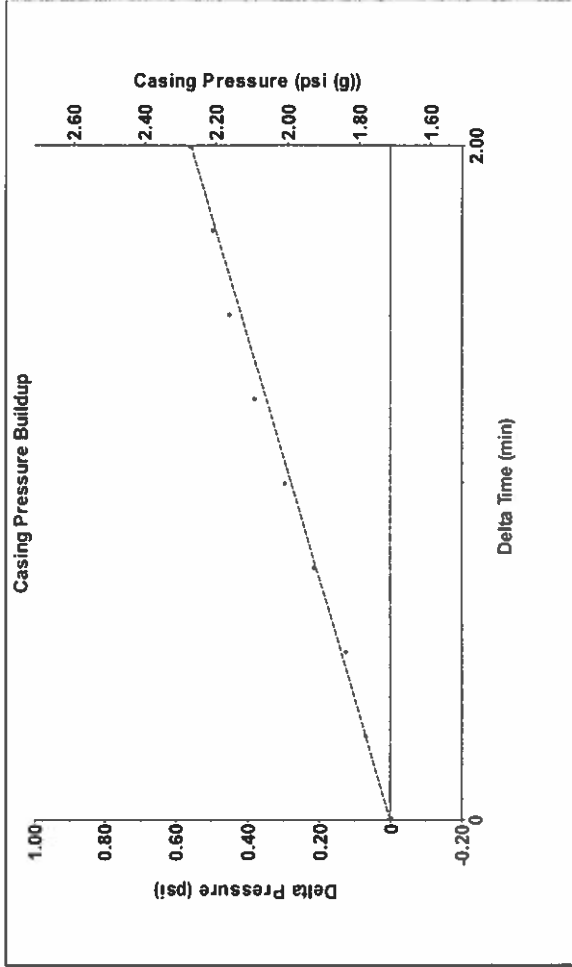
Casing Pressure 1.7 psi (g)
 Casing Pressure Buildup 0.6 psi
 Gas/Liquid Interface Pressure 2.8 psi (g)

Liquid Level Depth 2471.97 ft
 Pump Intake Depth 2615.00 ft
 Formation Depth 2720.00 ft

Formation Submergence 143 ft
 Total Gaseous Liquid Column HT (TVD) 111 ft
 Equivalent Gas Free Liquid HT (TVD)

Acoustic Test

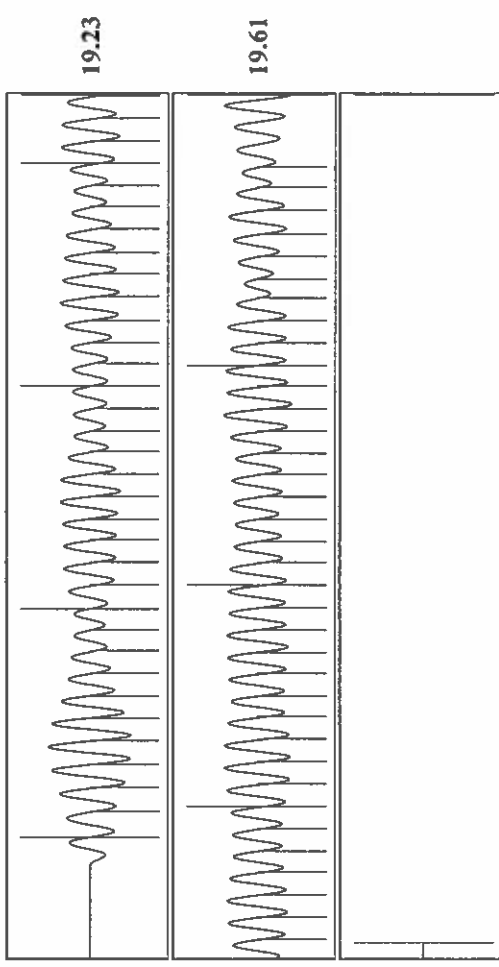
Group: TAD Well: garden city j-2 (acquired on: 04/24/19 13:22:20)



Change in Pressure 0.56 psi
 Change in Time 2.00 min

PT 6902
 Range 0 - ? psi

Group: TAD Well: garden city j-2 (acquired on: 04/24/19 13:22:20)



Acoustic Velocity 1224.05 ft/s
 Joints Per Second 19,4257 Jts/sec
 Depth to liquid level 2471.97 ft
 Automatic Collar Count Yes

Joints counted 69
 Joints to liquid level 78,4603
 Filter Width 17,0476
 Time to 1st Collar 0.28

21,0476
 3,832

Conservation Division
District Office No. 1
210 E. Frontview, Suite A
Dodge City, KS 67801



Phone: 620-682-7933
<http://kcc.ks.gov/>

Dwight D. Keen, Chair
Shari Feist Albrecht, Commissioner
Jay Scott Emler, Commissioner

Laura Kelly, Governor

April 30, 2019

Katherine McClurkan
Merit Energy Company, LLC
13727 Noel Road, Suite 1200
Dallas, TX 75240

Re: Temporary Abandonment
API 15-055-21490-00-01
Garden City J 2
NW/4 Sec.25-23S-34W
Finney County, Kansas

Dear Katherine McClurkan:

"Your temporary abandonment (TA) application for the well listed above has been approved. In accordance with K.A.R. 82-3-111 the TA status of this well will expire 04/30/2020.

- * If you return this well to service or plug it, please notify the District Office.
- * If you sell this well you are required to file a Transfer of Operator form, T-1.
- * If the well will remain temporarily abandoned, you must submit a new TA application, CP-111, before 04/30/2020.

You may contact me at the number above if you have questions.

Very truly yours,

Michael Maier"