

KANSAS CORPORATION COMMISSION
OIL & GAS CONSERVATION DIVISION

TEMPORARY ABANDONMENT WELL APPLICATION

OPERATOR: License#
Name:
Address 1:
Address 2:
City: State: Zip:
Contact Person:
Phone:
Contact Person Email:
Field Contact Person:
Field Contact Person Phone:

API No. 15-
Spot Description:
Sec. Twp. S. R.
GPS Location: Lat: Long:
Datum: NAD27 NAD83 WGS84
County: Elevation:
Lease Name: Well #:
Well Type: Oil Gas OG WSW Other:
SWD Permit #: ENHR Permit #:
Gas Storage Permit #:
Spud Date: Date Shut-In:

Table with 7 columns: Conductor, Surface, Production, Intermediate, Liner, Tubing. Rows include Size, Setting Depth, Amount of Cement, Top of Cement, Bottom of Cement.

Casing Fluid Level from Surface: How Determined? Date:
Casing Squeeze(s): to w / sacks of cement, to w / sacks of cement. Date:
Do you have a valid Oil & Gas Lease? Yes No
Depth and Type: Junk in Hole at Tools in Hole at Casing Leaks: Yes No Depth of casing leak(s):
Type Completion: ALT. I ALT. II Depth of: DV Tool: w / sacks of cement Port Collar: w / sack of cement
Packer Type: Size: Inch Set at: Feet
Total Depth: Plug Back Depth: Plug Back Method:

Geological Data:

Table with 4 columns: Formation Name, Formation Top, Formation Base, Completion Information. Rows 1 and 2.

UNDER PENALTY OF PERJURY I HEREBY ATTEST THAT THE INFORMATION CONTAINED HEREIN IS TRUE AND CORRECT TO THE BEST OF MY KNOWLEDGE

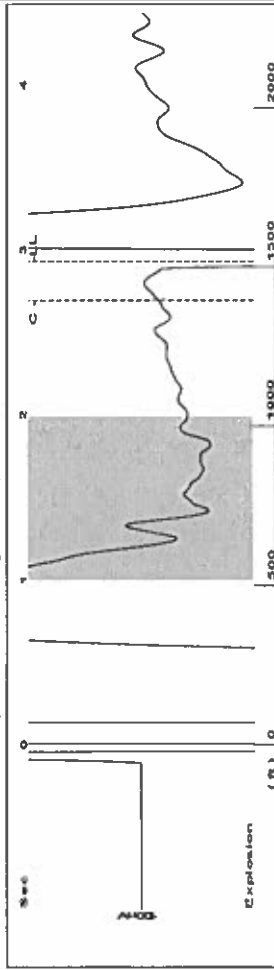
Submitted Electronically

Do NOT Write in This Space - KCC USE ONLY
Date Tested: Results: Date Plugged: Date Repaired: Date Put Back in Service:
Review Completed by: Comments:
TA Approved: Yes Denied Date:

Mail to the Appropriate KCC Conservation Office:

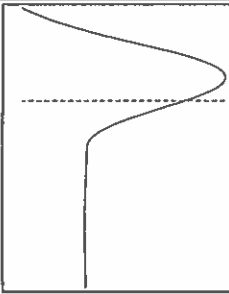
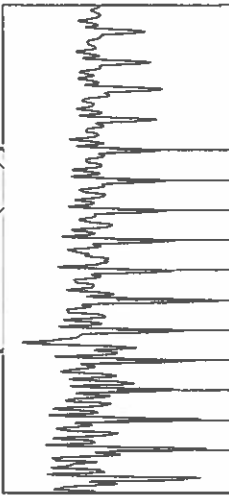
Table with 2 columns: Office Address, Phone. Rows for District Office #1, #2, #3, #4.

Group: Route 3 Well: gc t-1 (acquired on: 04/24/19 13:01:54)



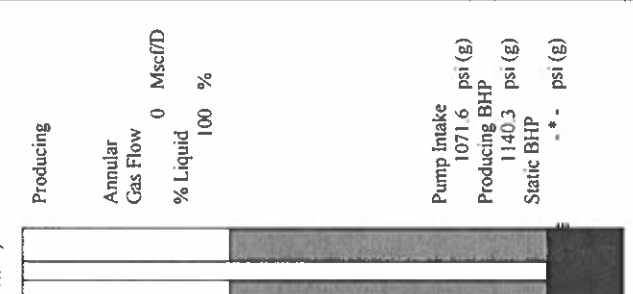
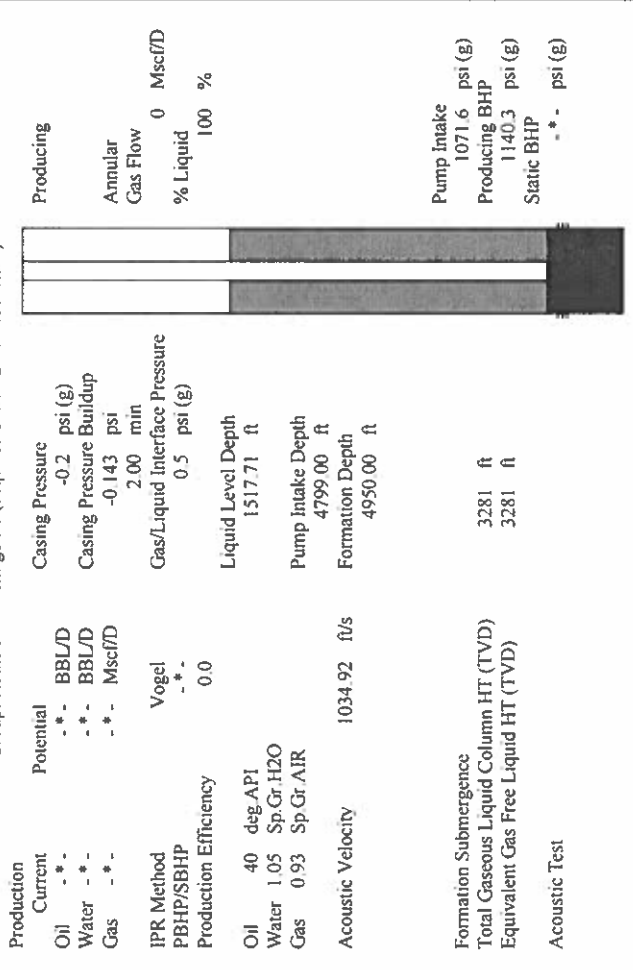
Filter Type High Pass Automatic Collar Count Yes Time 2.933 sec
 Manual Acoustic Veloc 1023.18 ft/s Manual JTS/sec 16.2075 Joints 48.082 Jts
 Depth 1517.71 ft

1.0 to 2.0 (Sec)



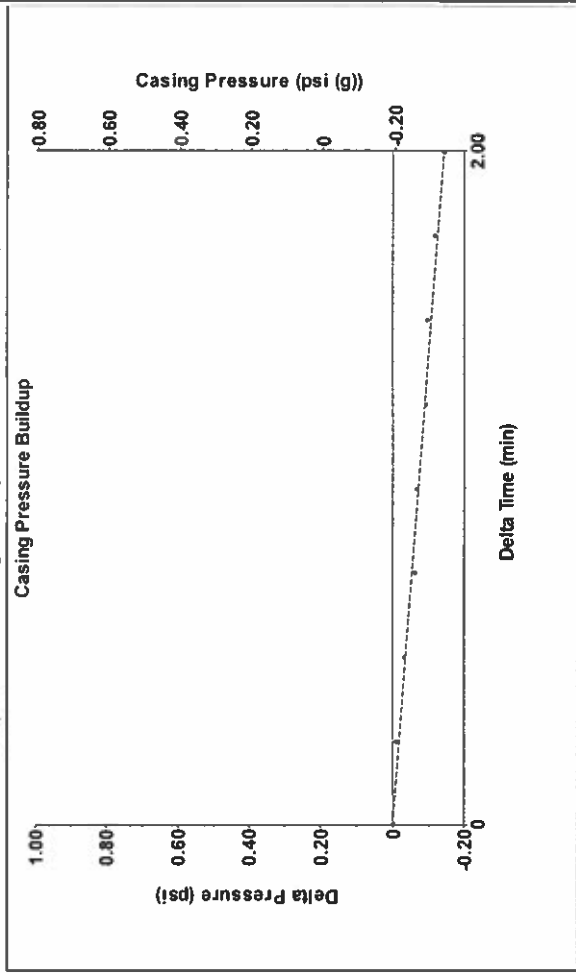
Analysis Method: Automatic

Group: Route 3 Well: gc t-1 (acquired on: 04/24/19 13:01:54)



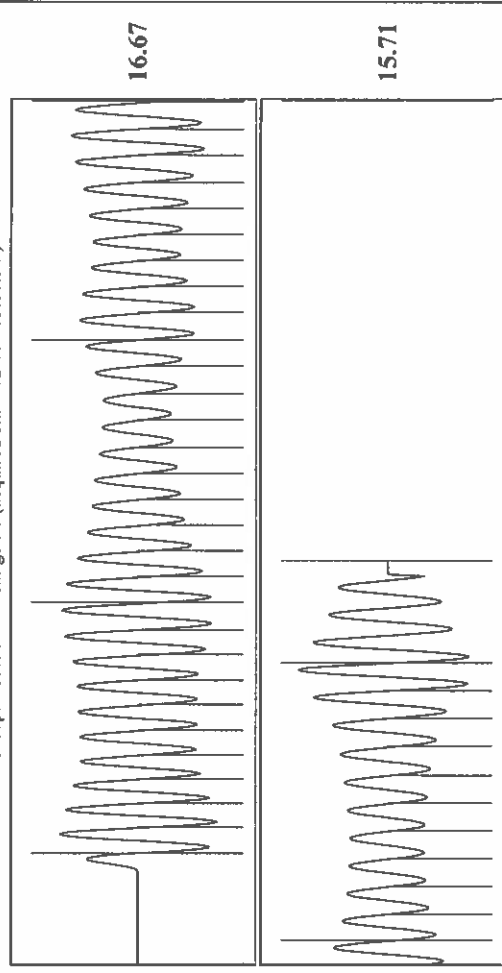
Production Current Potential - * - BBL/D - * - BBL/D - * - BBL/D - * - BBL/D
 Water - * - BBL/D - * - BBL/D - * - BBL/D - * - BBL/D
 Gas - * - BBL/D - * - BBL/D - * - BBL/D - * - BBL/D
 IPR Method Vogel - * - - * -
 PBHP/SBHP - * - - * -
 Production Efficiency 0.0
 Oil 40 deg API
 Water 1.05 Sp.Gr.H2O
 Gas 0.93 Sp.Gr.AIR
 Acoustic Velocity 1034.92 ft/s
 Formation Submergence
 Total Gaseous Liquid Column HT (TVD) 3281 ft
 Equivalent Gas Free Liquid HT (TVD) 3281 ft
 Acoustic Test
 Producing Annular Gas Flow 0 Mscf/D
 % Liquid 100 %
 Pump Intake 1071.6 psi (g)
 Producing BHP 1140.3 psi (g)
 Static BHP - * - psi (g)

Group: Route 3 Well: gc t-1 (acquired on: 04/24/19 13:01:54)



Change in Pressure -0.14 psi PT 6902 Range
 Change in Time 2.00 min

Group: Route 3 Well: gc t-1 (acquired on: 04/24/19 13:01:54)



Acoustic Velocity 1034.92 ft/s Joints counted 40
 Joints Per Second 16.3934 jts/sec Joints to liquid level 48.082
 Depth to liquid level 1517.71 ft Filter Width 14.2075
 Automatic Collar Count Yes Time to 1st Collar 0.256 18.2075 2.696

Conservation Division
District Office No. 1
210 E. Frontview, Suite A
Dodge City, KS 67801



Phone: 620-682-7933
<http://kcc.ks.gov/>

Dwight D. Keen, Chair
Shari Feist Albrecht, Commissioner
Jay Scott Emler, Commissioner

Laura Kelly, Governor

April 30, 2019

Katherine McClurkan
Merit Energy Company, LLC
13727 Noel Road, Suite 1200
Dallas, TX 75240

Re: Temporary Abandonment
API 15-055-21686-00-00
Garden City T (C) 1 (4)
NW/4 Sec.29-23S-34W
Finney County, Kansas

Dear Katherine McClurkan:

"Your temporary abandonment (TA) application for the well listed above has been approved. In accordance with K.A.R. 82-3-111 the TA status of this well will expire 04/30/2020.

- * If you return this well to service or plug it, please notify the District Office.
- * If you sell this well you are required to file a Transfer of Operator form, T-1.
- * If the well will remain temporarily abandoned, you must submit a new TA application, CP-111, before 04/30/2020.

You may contact me at the number above if you have questions.

Very truly yours,

Michael Maier"