

KANSAS CORPORATION COMMISSION
OIL & GAS CONSERVATION DIVISION

TEMPORARY ABANDONMENT WELL APPLICATION

OPERATOR: License#
Name:
Address 1:
Address 2:
City: State: Zip:
Contact Person:
Phone:
Contact Person Email:
Field Contact Person:
Field Contact Person Phone:

API No. 15-
Spot Description:
Sec. Twp. S. R.
GPS Location: Lat: Long:
Datum: NAD27 NAD83 WGS84
County: Elevation:
Lease Name: Well #:
Well Type: Oil Gas OG WSW Other:
SWD Permit #: ENHR Permit #:
Gas Storage Permit #:
Spud Date: Date Shut-In:

Table with 7 columns: Conductor, Surface, Production, Intermediate, Liner, Tubing. Rows include Size, Setting Depth, Amount of Cement, Top of Cement, Bottom of Cement.

Casing Fluid Level from Surface: How Determined? Date:
Casing Squeeze(s): to w / sacks of cement, to w / sacks of cement. Date:
Do you have a valid Oil & Gas Lease? Yes No
Depth and Type: Junk in Hole at Tools in Hole at Casing Leaks: Yes No Depth of casing leak(s):
Type Completion: ALT. I ALT. II Depth of: DV Tool: w / sacks of cement Port Collar: w / sack of cement
Packer Type: Size: Inch Set at: Feet
Total Depth: Plug Back Depth: Plug Back Method:

Geological Data:

Table with 4 columns: Formation Name, Formation Top, Formation Base, Completion Information. Rows 1 and 2.

UNDER PENALTY OF PERJURY I HEREBY ATTEST THAT THE INFORMATION CONTAINED HEREIN IS TRUE AND CORRECT TO THE BEST OF MY KNOWLEDGE

Submitted Electronically

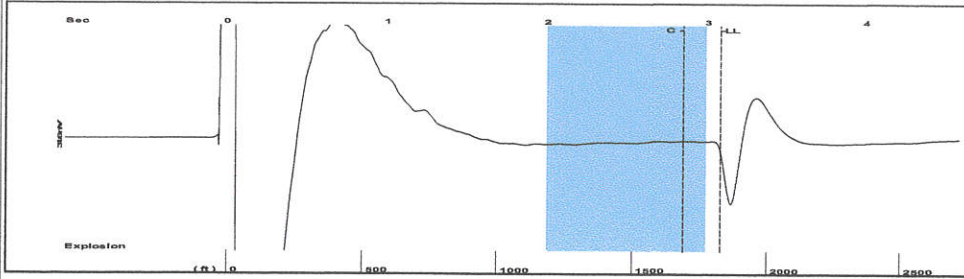
Do NOT Write in This Space - KCC USE ONLY
Date Tested: Results: Date Plugged: Date Repaired: Date Put Back in Service:
Review Completed by: Comments:
TA Approved: Yes Denied Date:

Mail to the Appropriate KCC Conservation Office:

Map of Kansas with 4 numbered districts and corresponding office addresses and phone numbers.

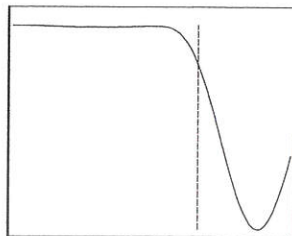
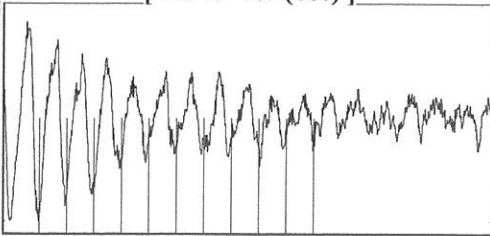
Shot at 350 PSI

Group: TA'D WELLS Well: E C MINGENBACK 4 (acquired on: 04/26/19 12:07:11)



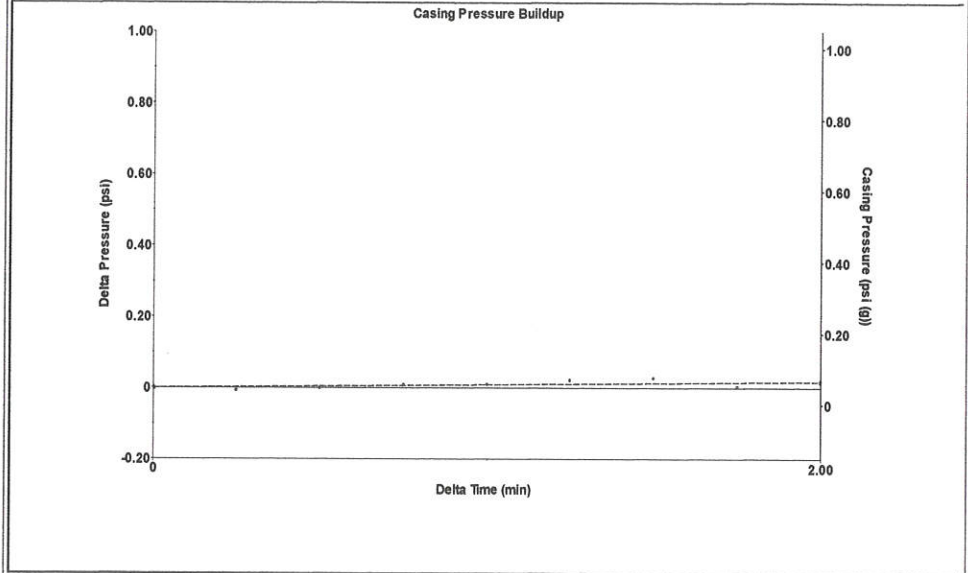
Filter Type High Pass Automatic Collar Count Yes Time 3.081 sec
 Manual Acoustic Velo 1134.17 ft/s Manual JTS/sec 17.8891 Joints 57.6786 Jts
 Depth 1828.41 ft

[2.0 to 3.0 (Sec)]



Analysis Method: Automatic

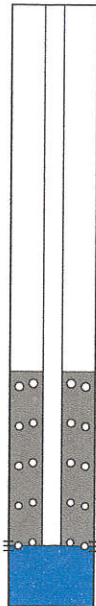
Group: TA'D WELLS Well: E C MINGENBACK 4 (acquired on: 04/26/19 12:07:11)



Change in Pressure 0.02 psi PT10857
 Change in Time 2.00 min Range 0 - ? psi

Group: TA'D WELLS Well: E C MINGENBACK 4 (acquired on: 04/26/19 12:07:11)

Production	Potential	Casing Pressure
Oil -*- -*- BBL/D		0.0 psi (g)
Water -*- -*- BBL/D		Casing Pressure Buildup
Gas -*- -*- Mscf/D		0.018 psi
		2.00 min
IPR Method Vogel		Gas/Liquid Interface Pressure
PBHP/SBHP -*- -		0.8 psi (g)
Production Efficiency 0.0		
Oil 40 deg.API	Liquid Level Depth	
Water 1.05 Sp.Gr.H2O	1828.41 ft	
Gas 0.80 Sp.Gr.AIR	Pump Intake Depth	
	2866.00 ft	
Acoustic Velocity 1186.9 ft/s	Formation Depth	
	2866.00 ft	



Producing

Annular Gas Flow 0 Mscf/D

% Liquid 100 %

Pump Intake 351.9 psi (g)

Producing BHP 351.9 psi (g)

Static BHP -*- psi (g)

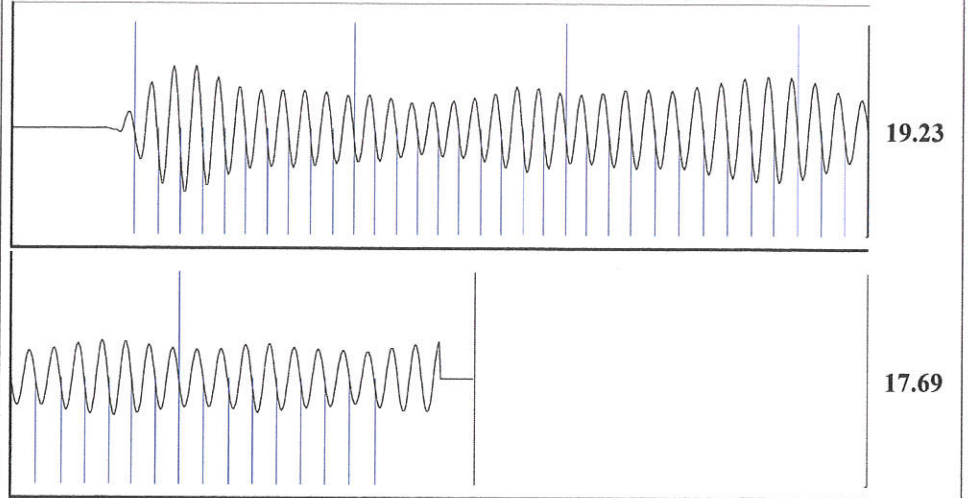
Formation Submergence

Total Gaseous Liquid Column HT (TVD) 1038 ft

Equivalent Gas Free Liquid HT (TVD) 1038 ft

Acoustic Test

Group: TA'D WELLS Well: E C MINGENBACK 4 (acquired on: 04/26/19 12:07:11)



Acoustic Velocity	1186.9 ft/s	Joints counted	48
Joints Per Second	18.7207 jts/sec	Joints to liquid level	57.6786
Depth to liquid level	1828.41 ft	Filter Width	15.8891 19.8891
Automatic Collar Count	Yes	Time to 1st Collar	0.284 2.848

Conservation Division
District Office No. 1
210 E. Frontview, Suite A
Dodge City, KS 67801



Phone: 620-682-7933
<http://kcc.ks.gov/>

Dwight D. Keen, Chair
Shari Feist Albrecht, Commissioner
Jay Scott Emler, Commissioner

Laura Kelly, Governor

April 30, 2019

Katherine McClurkan
Merit Energy Company, LLC
13727 Noel Road, Suite 1200
Dallas, TX 75240

Re: Temporary Abandonment
API 15-129-21369-00-00
Mingenback E C 4
SE/4 Sec.31-34S-39W
Morton County, Kansas

Dear Katherine McClurkan:

"Your temporary abandonment (TA) application for the well listed above has been approved. In accordance with K.A.R. 82-3-111 the TA status of this well will expire 04/30/2020.

- * If you return this well to service or plug it, please notify the District Office.
- * If you sell this well you are required to file a Transfer of Operator form, T-1.
- * If the well will remain temporarily abandoned, you must submit a new TA application, CP-111, before 04/30/2020.

You may contact me at the number above if you have questions.

Very truly yours,

Michael Maier"