

KANSAS CORPORATION COMMISSION
OIL & GAS CONSERVATION DIVISION

TEMPORARY ABANDONMENT WELL APPLICATION

OPERATOR: License#
Name:
Address 1:
Address 2:
City: State: Zip:
Contact Person:
Phone:
Contact Person Email:
Field Contact Person:
Field Contact Person Phone:

API No. 15-
Spot Description:
Sec. Twp. S. R.
GPS Location: Lat: Long:
Datum: NAD27 NAD83 WGS84
County: Elevation:
Lease Name: Well #:
Well Type: Oil Gas OG WSW Other:
SWD Permit #: ENHR Permit #:
Gas Storage Permit #:
Spud Date: Date Shut-In:

Table with 7 columns: Conductor, Surface, Production, Intermediate, Liner, Tubing. Rows include Size, Setting Depth, Amount of Cement, Top of Cement, Bottom of Cement.

Casing Fluid Level from Surface: How Determined? Date:
Casing Squeeze(s): to w / sacks of cement, to w / sacks of cement. Date:
Do you have a valid Oil & Gas Lease? Yes No
Depth and Type: Junk in Hole at Tools in Hole at Casing Leaks: Yes No Depth of casing leak(s):
Type Completion: ALT. I ALT. II Depth of: DV Tool: w / sacks of cement Port Collar: w / sack of cement
Packer Type: Size: Inch Set at: Feet
Total Depth: Plug Back Depth: Plug Back Method:

Geological Date:

Table with 4 columns: Formation Name, Formation Top, Formation Base, Completion Information. Rows 1 and 2.

UNDER PENALTY OF PERJURY I HEREBY ATTEST THAT THE INFORMATION CONTAINED HEREIN IS TRUE AND CORRECT TO THE BEST OF MY KNOWLEDGE

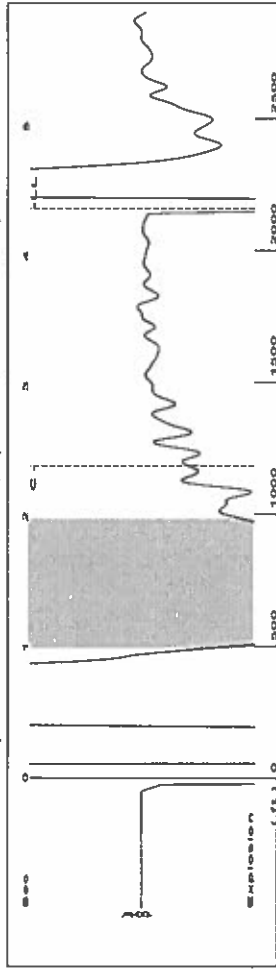
Submitted Electronically

Form with fields: Do NOT Write in This Space - KCC USE ONLY, Date Tested, Results, Date Plugged, Date Repaired, Date Put Back in Service, Review Completed by, Comments, TA Approved: Yes Denied, Date.

Mail to the Appropriate KCC Conservation Office:

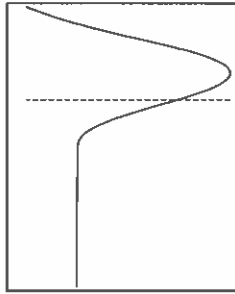
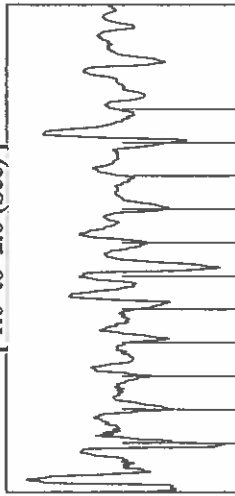
Table with 2 columns: Office Address, Phone. Rows for District Office #1, #2, #3, #4.

Group: Route 2 Well: river bend 8 (acquired on: 04/23/19 14:38:12)



Filter Type High Pass Automatic Collar Count Yes Time 4.371 sec
 Manual Acoustic Velo924.198 ft/s Manual JTS/sec 14.5773 Joints 68.0841 Jts
 Depth 2158.27 ft

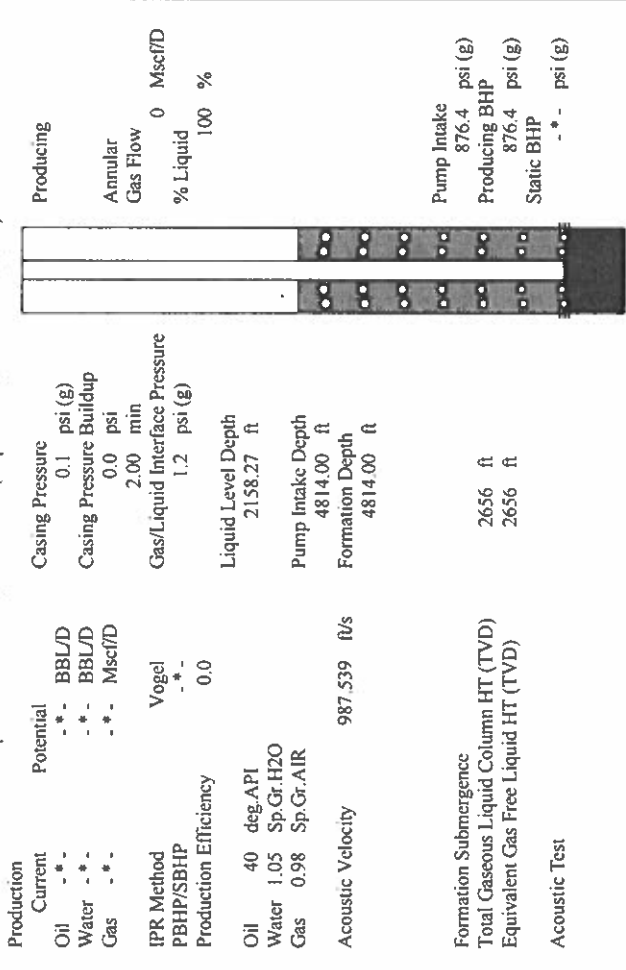
[1.0 to 2.0 (Sec)]



Change in Pressure 0.04 psi PT 6902
 Change in Time 2.00 min Range

Analysis Method: Automatic

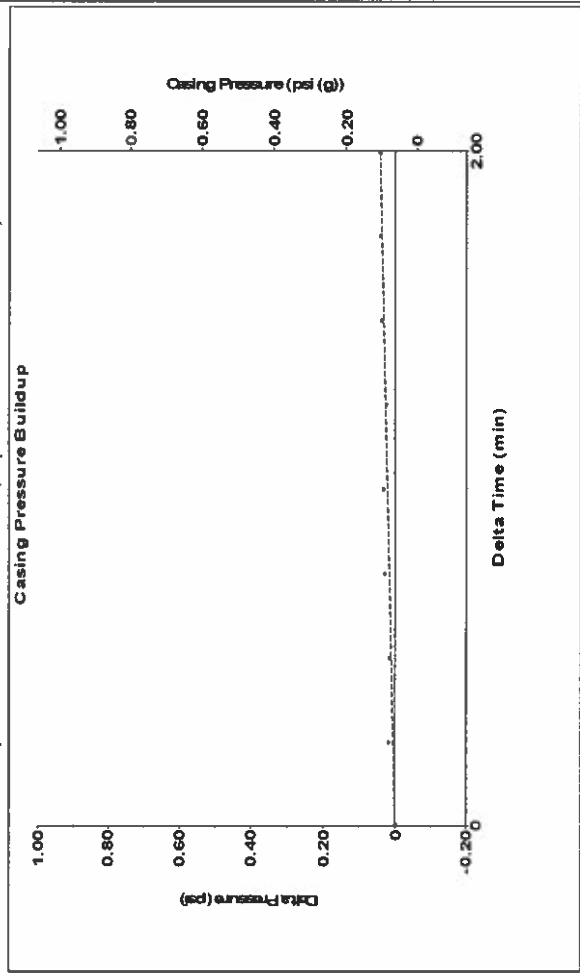
Group: Route 2 Well: river bend 8 (acquired on: 04/23/19 14:38:12)



Production Current Potential - * - * - BBL/D 0.1 psi (g)
 Water - * - * - BBL/D Casing Pressure Buildup 0.04 psi
 Gas - * - * - Mscf/D 2.00 min
 IPR Method Vogel Gas/Liquid Interface Pressure 1.2 psi (g)
 PBHP/SBHP - * - * - 0.0
 Production Efficiency - * - * -
 Oil 40 deg API Liquid Level Depth 2158.27 ft
 Water 1.05 Sp.Gr.H2O Pump Intake Depth 4814.00 ft
 Gas 0.98 Sp.Gr.AIR Formation Depth 4814.00 ft
 Acoustic Velocity 987.539 ft/s

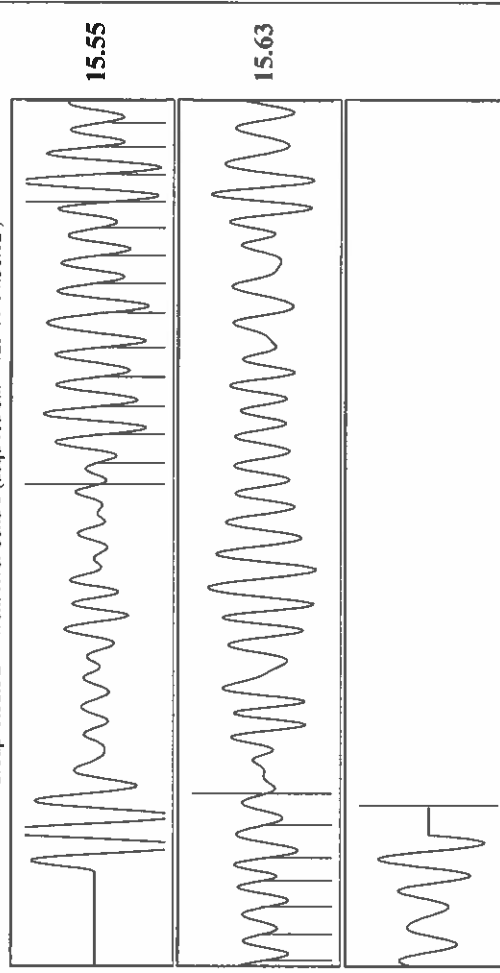
Formation Submergence
 Total Gaseous Liquid Column HT (TVD) 2656 ft
 Equivalent Gas Free Liquid HT (TVD) 2656 ft
 Acoustic Test
 Pump Intake 876.4 psi (g)
 Producing BHP 876.4 psi (g)
 Static BHP - * - * - psi (g)

Group: Route 2 Well: river bend 8 (acquired on: 04/23/19 14:38:12)



Change in Pressure 0.04 psi PT 6902
 Change in Time 2.00 min Range

Group: Route 2 Well: river bend 8 (acquired on: 04/23/19 14:38:12)



Acoustic Velocity 987.539 ft/s Joints counted 20
 Joints Per Second 15.5763 Jts/sec 68.0841
 Depth to liquid level 2158.27 ft 12.5773
 Automatic Collar Count Yes Time to 1st Collar 1.112
 Filter Width 16.5773
 Time to 1st Collar 2.396

Conservation Division
District Office No. 1
210 E. Frontview, Suite A
Dodge City, KS 67801



Phone: 620-682-7933
<http://kcc.ks.gov/>

Dwight D. Keen, Chair
Shari Feist Albrecht, Commissioner
Jay Scott Emler, Commissioner

Laura Kelly, Governor

May 07, 2019

Katherine McClurkan
Merit Energy Company, LLC
13727 Noel Road, Suite 1200
Dallas, TX 75240

Re: Temporary Abandonment
API 15-055-22514-01-00
River Bend 8
SE/4 Sec.34-24S-32W
Finney County, Kansas

Dear Katherine McClurkan:

"Your temporary abandonment (TA) application for the well listed above has been approved. In accordance with K.A.R. 82-3-111 the TA status of this well will expire 05/07/2020.

- * If you return this well to service or plug it, please notify the District Office.
- * If you sell this well you are required to file a Transfer of Operator form, T-1.
- * If the well will remain temporarily abandoned, you must submit a new TA application, CP-111, before 05/07/2020.

You may contact me at the number above if you have questions.

Very truly yours,

Michael Maier"