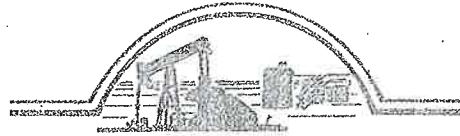


Randall Kilian Corporation  
Geologist



Certified Petroleum  
Geologist #3351  
License #224

3951 Eveningglow Way  
Castle Rock, CO 80104  
Phone: 720-733-0420  
Cell: 785-635-1349  
E-mail: rkgeo53@hotmail.com

## GEOLOGIST'S WELL REPORT

COMPANY DAMAR RESOURCES, INC. (9067)  
WELL Bongartz-Augustine #3  
FIELD Locker North  
LOCATION (legal) NW SE SW SW  
(footages) 555' ESL & 895' FWL  
Section 29 TWP 13S RGE 21W  
(Map) 5 1/2 mi S & 1 1/2 mi W of Riga I-70 Exit  
COUNTY Trego STATE Kansas  
ELEVATION: 2301' K.B., 2293' G.L.  
Depths measured from Kelly Bushing  
A. P. I. NUMBER 15-195-23077  
GEOLOGY BY Randall Kilian

## PERTINENT WELL DATA

CONTRACTOR Discovery Drilling (31548)  
RIG #4 HYDRAULICS D-375 6x14x60  
DRILL PIPE 4 1/2" X-H COLLARS 6 1/2 x 2 1/2 15 (496')  
CASING: SURFACE 8 5/8" @ 263' w/ 160 sx 80/20 Poz  
(Galen Gaschler TP)  
PRODUCTION 5 1/2" @ 4161' w/ 105 sx EA2  
Port collar @ 1707'  
DRILLING FLUID. COMPANY Andy's Mud & Chemical, Co.  
(Aaron Blew)  
TYPE: Chemical & Drispac  
REMARKS: Full service (rainy, wet)  
DRILL STEM TESTS: COMPANY Trilobite Testing, Inc.  
(Brannon Lonsdale)  
NUMBER OF TESTS Three (3)  
ELECTIC LOGS: COMPANY Precision Energy Services  
DETAIL (5") 3550' - RTD  
TYPE DI, Comp N-D, Micro  
DRILLING TIME FROM 3550' TO RTD  
SAMPLE TIME FROM 3550' TO RTD  
SUPERVISION FROM 3400' TO RTD  
VERTICAL DEVIATION 1/2" @ 263', 1 3/4" @ 4092'  
PLUGGING REPORT 30 sx Rat, 15 sx Mouse  
RESERVE PIT 650 bbls, Chl. 42,000 Ca. 460

DATE:	7 a.m.	Depth	RIG ACTIVITY
11-24-18			MIRU
11-26-18			Spud
11-27-18		380'	Drilling under surface
11-28-18		1660'	Drilling sand & shale
11-29-18		2550'	Drilling shale & lime
11-30-18		3155'	Drilling lime & shale
12-01-18		3660'	Drilling LKc lime
12-02-18		4030'	Drilling Marmaton lime
12-03-18		4092'	DST #2 Cherokee Sand
12-04-18		4097'	DST #3 Cherokee Sand
12-05-18		4165'	TD, Logged, Set casing

2	2nd sand 4027- 4092'	39# 59# 5"	1149# 60"	67# 202# 60"	1109# 90"	1975# 1952#	130' GIP 60' C,G,Oil 35° 380' H,O,C,Mud 40% Oil
3	2nd sand 4027- 4097'	28# 72# 5"	1146# 60"	87# 258# 60"	1089# 90"	1987# 1971#	65' GIP 30' C,Oil 350' H,O,C,Mud 40% Oil 190' W,M,C,Oil 10% Wtr
4							
5							
6							
7							
8							

MUD RECORD							Displaced				
CHK	DEPTH	WT	VIS	FIL	CHL	YP	LCM 2#	LCM 2#	LCM 2#	LCM 1½#	
1	3405'										
2	3650'	8.7	56								
3	3688'	8.7	52	7.6	2K	14					
4	3850'	8.7	55								
5	3950'	8.8	56								
6	4077'	9.0	53	7.6	2.5K	12					
7	4092'	9.0	51	7.6	3K	12					
8	4097'	9.2	49	7.6	5K	10					
9											
10											
11											

BIT RECORD							
NO	SIZE	MAKE	TYPE	DEPTHOUT	FEET	HOURS	
1	121"	Russia	R599	263'	263'	6 1/4	
2	7 7/8"	Hughes	GX20C	4165'	3902'	103	
3							
4							
5							
6							
7							
8							

T  
13  
S



STRATIGR  
MARKI

Anhydri  
Base  
Heeb Sh  
Lansing  
BKc.  
Chero S  
Chero S  
Cong Sd  
Arbuckl  
RTD  
LTD

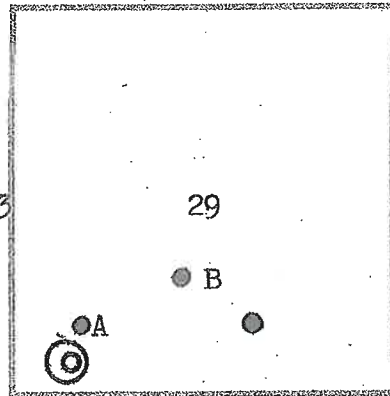
Pipe

\*Structu

REFERRED TO:

- A: SWENCO WESTERN, Inc.  
#1 Bongartz-Augustine NE SW SW 29
- B: DAMAR RESOURCES, Inc.  
#2 Bongartz-Augustine S<sup>1</sup>/<sub>2</sub> SE NE SW 29
- C: \_\_\_\_\_
- D: \_\_\_\_\_
- E: \_\_\_\_\_

T  
13  
S



STRATIGRAPHIC MARKERS	SUBJECT WELL			STRUCTURAL POSITION				
	SAMPLES	E. LOGS	DATUM	A	B	C	D	E

Anhydrite	1698'	1697'	+ 604	+609	+605			
Base	1746'	1744'	+ 557	+564	+560			
Heeb Sh	3619'	3616'	-1315	-1315	-1317			
Lansing	3655'	3651'	-1350	-1352	-1354			
BKc.	3901'	3895'	-1594	-1599	-1597			
Chero Sh	4040'	4033'	-1732	-1738	-1735			
Chero Sd	4051'	4045'	-1744	-1753	-1762			
Cong Sd	4085'	4084'	-1783	-1788	-1776			
Arbuckle				-1867	-			
RTD	4165'	4163'	-1862	-1916	-1862			
LTD				-1915	-1861			

Pipe strap 2.12' short.

The Bongartz-Augustine #3 well was drilled with Discovery Drilling tools rig #4 beginning 11-24-18 and drilling was completed 12-5-2018.

The drill site was located via a 3-D seismic survey. It is a south development location to the #1 well. Structurally, the well ran as expected from seismic and nearby wells.

Positive data from DST #2 & #3 along with different looking sands on the log, were the reasons for setting casing to further test the well.

Recommended perms; 4085-86'

Respectfully,

*Randy*  
Randy Kilian

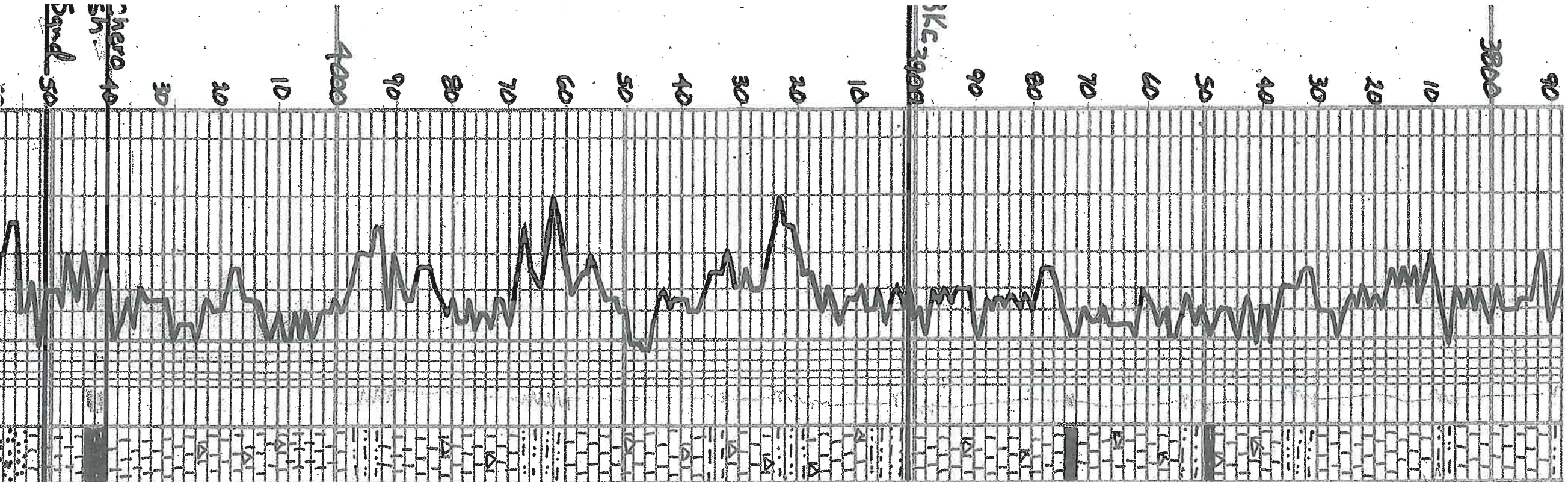
REMARKS

LITHOLOGY (LASSER)

# & SHOWS  
POOF  
FAIR  
GOOD  
DST

DRILLING TIME (min/ft)  
1/2 1 2 3 4 5678910





LS - off wh. tan. - fm. xln. sl. fossil.  
shaly

LS - sl. st. - gm. - fm. - brn.

LS - off wh. - tan. - fm. xln. - fossil.  
w/ poor water part. &  
dead oil st. in p. shaly

sh. - gm. - brn. - gm.

LS - off wh. - tan. - fm. xln. sl. fossil  
shaly

sk. - blk  
sk. - gry. - brn. - gm.

LS - tan. - brn. - fm. xln. fossil.  
chaly.

sh. - blk, fissile

LS - off wh. - tan. - fm. xln. fossil  
shaly

sk. - sl. st. - gm. - brn. - gm.

LS - tan. - brn. - fm. xln. Δ

sk. - gry. - brn. - gm. - maroon.

LS - brn. - fm. xln. fossil. Δ

sk. - gry

LS - tan. - brn. - gry. - fm. xln. fossil. Δ

sk. - sl. st., gry. - brn. - gm., maroon

LS - off wh. - tan. - fm. xln. Δ

sk. - sl. st. - gry. - brn. - gm.

LS - off wh. - tan. - gry. - fm. xln.  
fossil. Δ

sk. - blk.

sk. - blk, carb, fissile

LS - tan. - fm. xln.

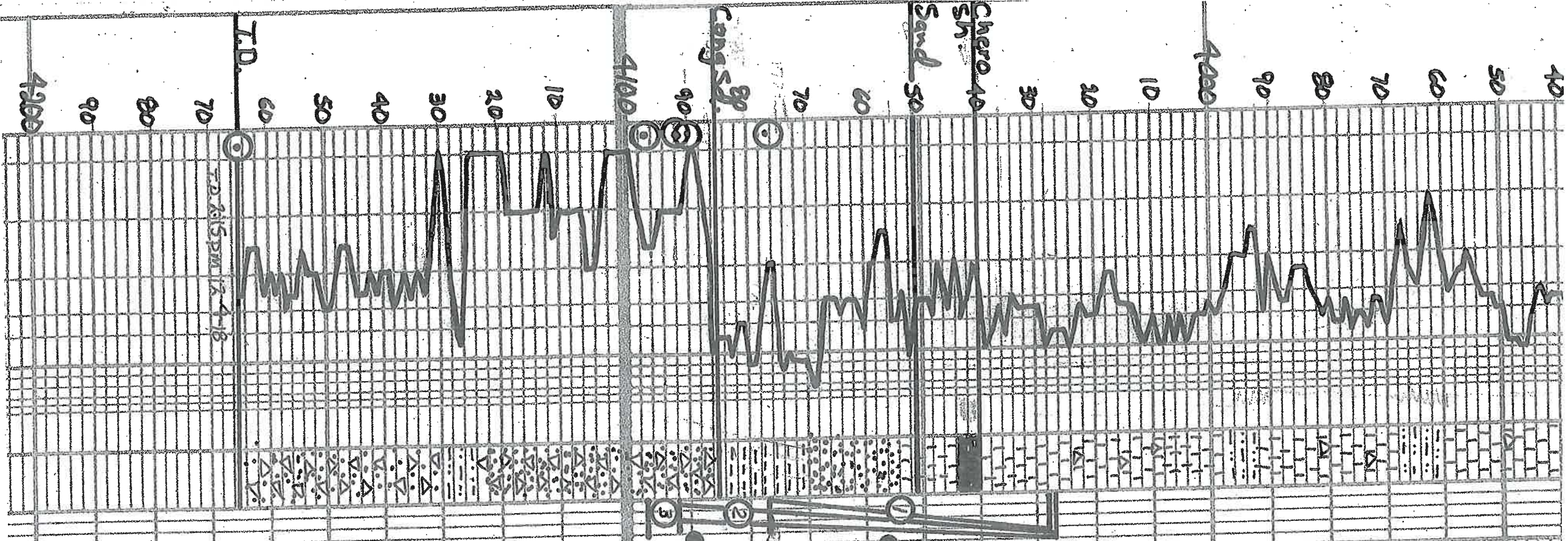
SS - gr. - fm. - gm. - well sorted  
sl. sh. - oil. - sl. - sh.

Mud  
vis. - 53  
wt. - 87.5

Mud  
vis. - 56  
wt. - 88

Mud  
vis. - 53  
wt. - 90  
wt. - 76

Mud  
vis. - 53  
wt. - 90  
wt. - 76



LS - tan-brn-gry-fan. sh. - fossiliferous  
 Mud  
 Vis. - 56  
 wt - 88

LS - off-wh. tan-fn. sh.  $\Delta$   
 Slsstst - gry-brn-grn

LS - off-wh. tan-gry-fn. sh.  $\Delta$   
 fossiliferous

LS - ala.  
 Mud @ 40'  
 Vis. - 53 Y  
 wt - 92 C  
 wt - 76 L

Sh. blk. carb. fissile  
 Mud @ 88  
 Vis. - 90

SS - grtz. fn. grn. well sorted  
 Dst #1 C  
 4028-77'  
 51.60" G.I.  
 2105' G.I.  
 50' M.U.  
 F.R. 18.23  
 S.H. 4.2

SS - gry-grn.  
 Stop @ 2.12  
 decv 2 X

$\Delta$  V - clear wh. orange w/SS, grtz  
 well sorted, air sat. STD.  
 Dst #2  
 4027-91'  
 51.25" G.I.  
 1306' G.I.  
 60' C.G.I.  
 380' H.O.  
 F.R. 39.59

$\Delta$  V - clear wh. orange, oil  
 w/ SS - grtz. med-coarse grn.  
 or sh. sat. S/SFD.  
 Dst #3  
 4027-91'  
 51.60" G.I.  
 65' G.I.  
 30' C.O.I.  
 350' H.O.  
 190' W.M.  
 F.R. 28.72  
 S.I.R. 114

Slsstst - gry-brn-grn.  
 Dev 1/4  
 Mud @ 88  
 Vis. - 88  
 wt - 92 C  
 wt - 76 L

$\Delta$  V - med-coarse grn. (massive)  
 barren  
 Dev 1/4  
 Mud @ 88  
 Vis. - 88  
 wt - 92 C  
 wt - 76 L

TD. 2015 PM 12-4-18

